

LOCATION

Building D
16165 SW 72nd Avenue
Portland OR 97224

TOTAL SQ.FT. OFFICE SQ.FT.

11,056 sq.ft.
5,347 sq.ft.

DOCK DOORS DRIVE-IN DOORS CLEAR HEIGHT

1
1
18'

FEATURES

End cap
Walking Distance to Bridgeport Village

RATE

\$0.65/sq.ft. Shell
\$0.95/sq.ft. Office
NNN

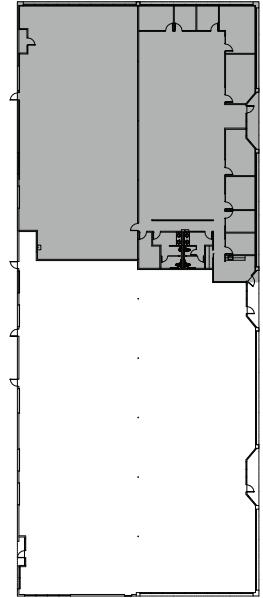
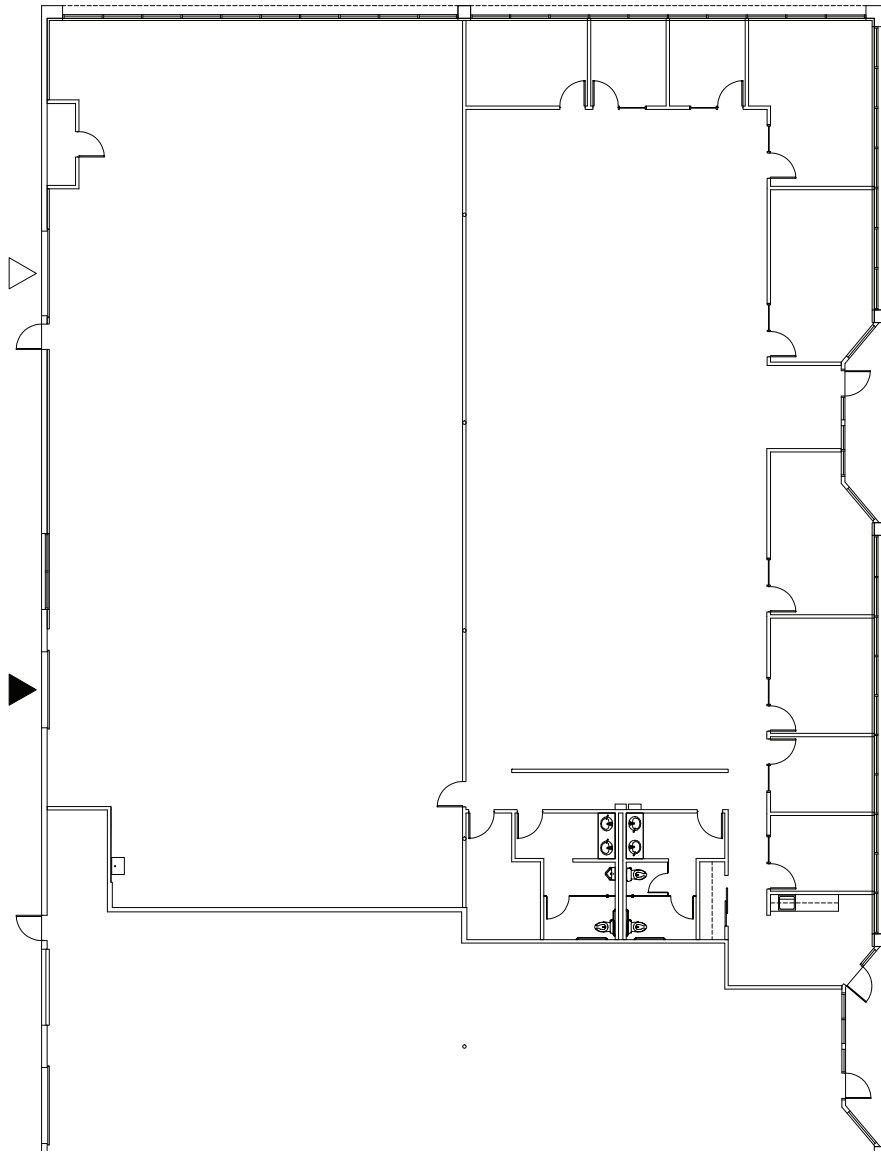
LEASING CONTACT

Sam Briggs
samb@pactrust.com
503-624-6300

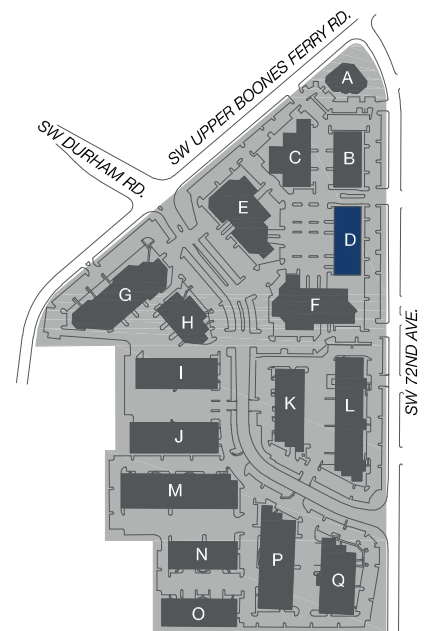
Dave Hicks
daveh@pactrust.com
503-624-6300



TOTAL 11,056 SQ FT
OFFICE 5,347 SQ FT
CLEAR HEIGHT 18 FT



BUILDING PLAN



PACTRUST BUSINESS PARK
Portland, OR 97224

▽ GRADE ACCESS

▼ DOCK ACCESS

15350 SW Sequoia Pkwy Suite 300 Portland OR 97224 • 503.624.6300 • pactrust.com

The square footage and rates quoted herein are subject to change. PacTrust can only guarantee square footage and rates with a signed lease agreement.

