

# Approved Development for Sale

Broker  
Alert



637 Sheridan Way Ventura • California



Contact | Call for a Tour  
Jeff Becker 805.653-6794 ext 201 | [jjbecker@beckergroup.com](mailto:jjbecker@beckergroup.com)

Real Estate Investments | Property Management

web [www.beckergroup.com](http://www.beckergroup.com) tele 805.653.6794 fax 805.653.6795 license 01213236  
street 40 South Ash Street Ventura, CA 93001 mail PO Box 23277, Ventura, CA 93002

The information above has been obtained from sources believed reliable. While we do not doubt it's accuracy, we have not verified it and make no guarantee, warranty or representation about it. It is your responsibility to independently confirm it's accuracy and completeness. Any projections, opinions, assumption or estimates used are for example only and do not represent the current or future performance of the property. The value of this transaction to you depends on tax and other factors which should be evaluated by your tax, financial and legal advisors. You and your advisors should conduct a careful independent investigation of the property to determine to your satisfaction the stability of the property for your needs.



# Approved Housing Development For SALE

Contact: Jeff Becker 805.653-6794 ext 201 | jbecker@beckergroup.com

637 Sheridan Way  
Ventura • California

**\$1,000,000**

- Unique Ventura WestSide Acquisition Opportunity
- Existing 3 Bedroom/1 Bath House on 12,500 sf lot with Approved 5,580 sf 10 Unit/Rooftop Deck Development



*Located in Heart of the WestSide Community, close to Westside + Downtown Shops, Entertainment, Restaurants, Markets, Parks, Schools and WestSides Artists Community and More. Close to 101 Frwy and Hwy 33 + ideally located between Santa Barbara and Los Angeles Counties*

**Becker  
Group**

**Real Estate Investments | Property Management**

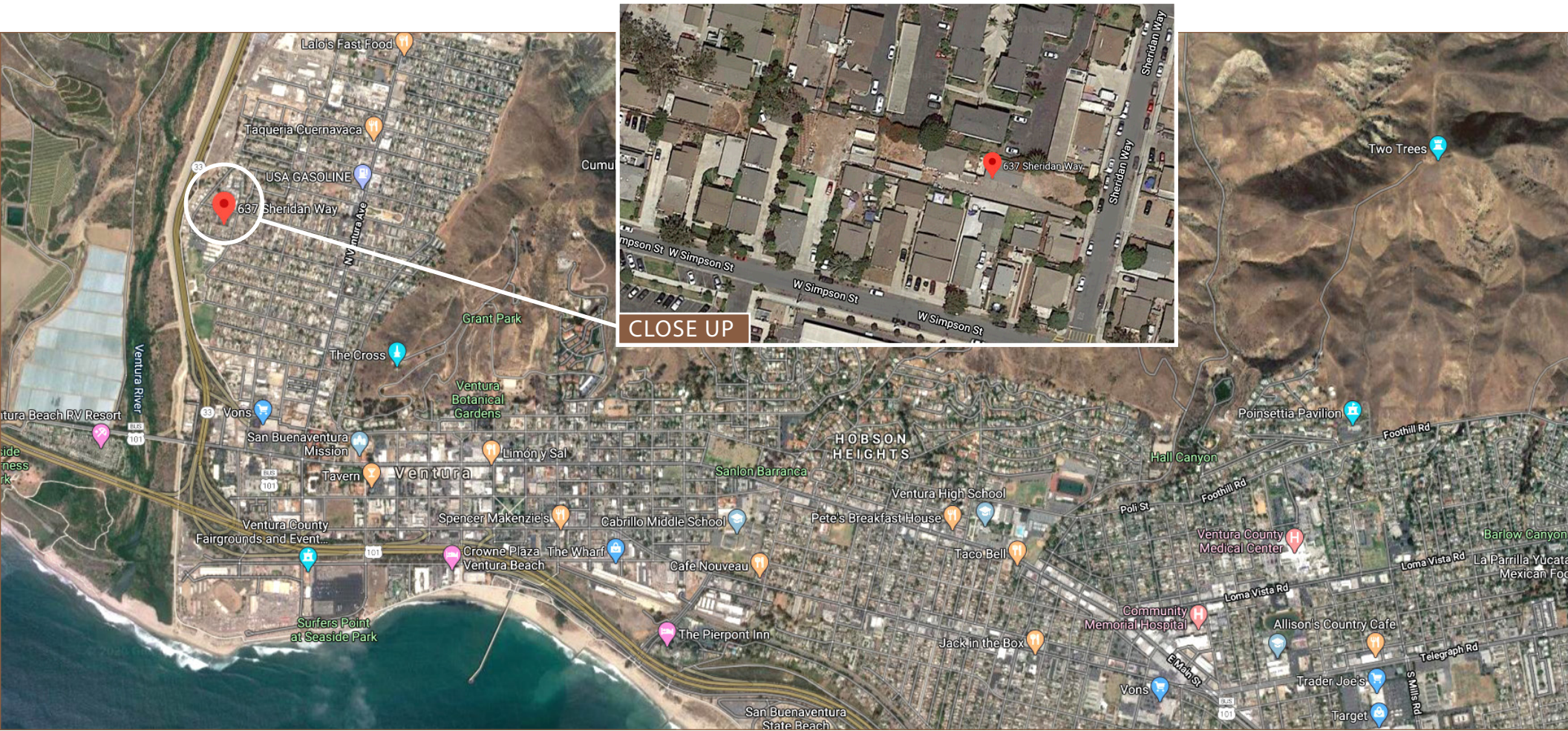
web [www.beckergroup.com](http://www.beckergroup.com) tele 805.653.6794 fax 805.653.6795 license 01213236  
street 40 South Ash Street Ventura, CA 93001 mail PO Box 23277, Ventura, CA 93002

The information above has been obtained from sources believed reliable. While we do not doubt it's accuracy, we have not verified it and make no guarantee, warranty or representation about it. It is your responsibility to independently confirm it's accuracy and completeness. Any projections, opinions, assumption or estimates used are for example only and do not represent the current or future performance of the property. The value of this transaction to you depends on tax and other factors which should be evaluated by your tax, financial and legal advisors. You and your advisors should conduct a careful independent investigation of the property to determine to your satisfaction the stability of the property for your needs.



# 637 Sheridan Way

aerial maps



Real Estate Investments | Property Management

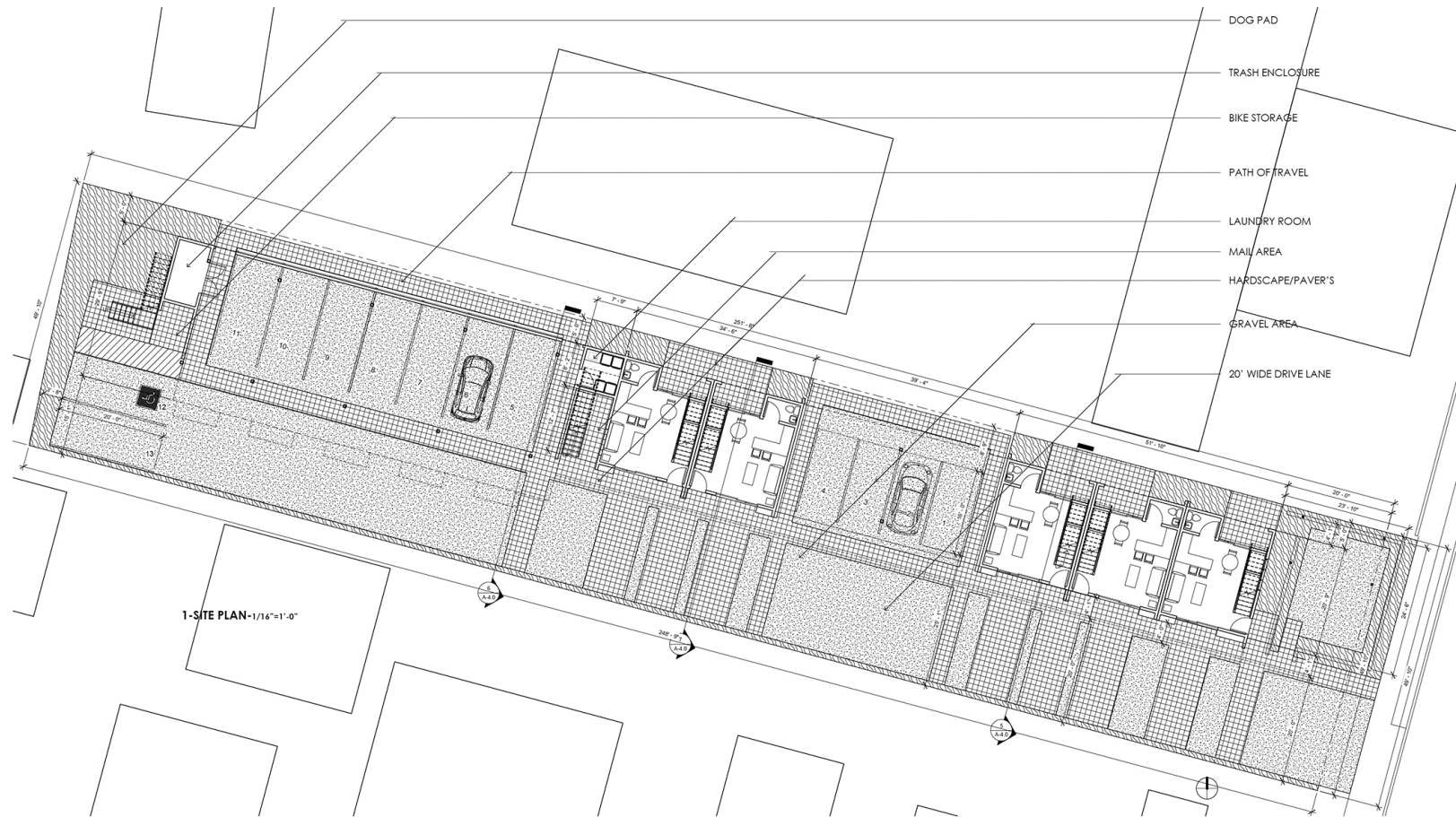
web [www.beckergrp.com](http://www.beckergrp.com) tele 805.653.6794 fax 805.653.6795 license 01213236  
street 40 South Ash Street Ventura, CA 93001 mail PO Box 23277, Ventura, CA 93002

The information above has been obtained from sources believed reliable. While we do not doubt it's accuracy, we have not verified it and make no guarantee, warranty or representation about it. It is your responsibility to independently confirm it's accuracy and completeness. Any projections, opinions, assumption or estimates used are for example only and do not represent the current or future performance of the property. The value of this transaction to you depends on tax and other factors which should be evaluated by your tax, financial and legal advisors. You and your advisors should conduct a careful independent investigation of the property to determine to your satisfaction the stability of the property for your needs.



# 637 Sheridan Way

site plan



cline **collaborative**  
 5218 Harvard Street, Ventura, California 93003  
 P:805-766-3611 E:lyson@clinecoll.com

House-Sheridan

637 Sheridan Way Ventura, CA 93001

Another Project by Jason Rothman

5/21/2019 2:22:11 PM Revision Date

Site Plan  
 A-1.0



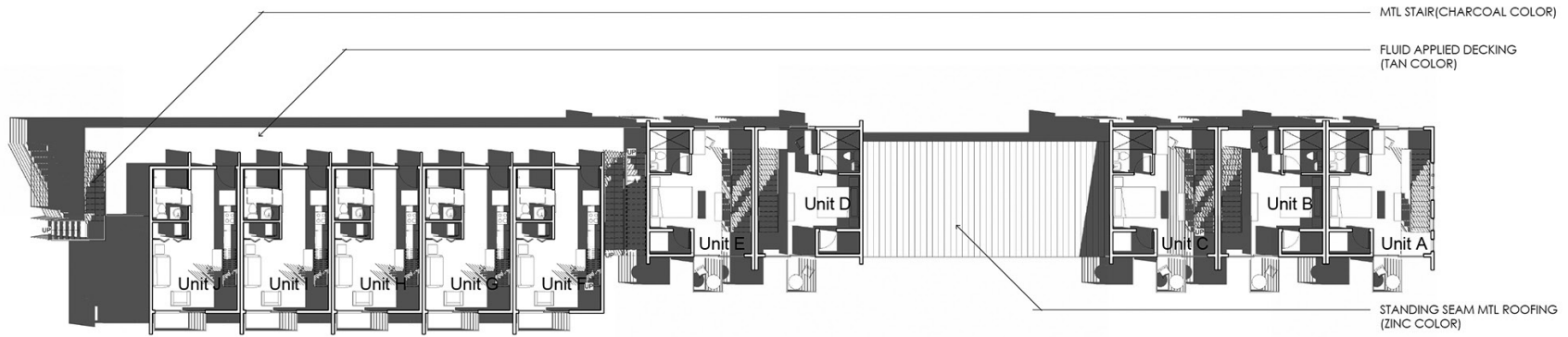
Real Estate Investments | Property Management

web [www.beckergrp.com](http://www.beckergrp.com) tele 805.653.6794 fax 805.653.6795 license 01213236  
 street 40 South Ash Street Ventura, CA 93001 mail PO Box 23277, Ventura, CA 93002

The information above has been obtained from sources believed reliable. While we do not doubt it's accuracy, we have not verified it and make no guarantee, warranty or representation about it. It is your responsibility to independently confirm it's accuracy and completeness. Any projections, opinions, assumption or estimates used are for example only and do not represent the current or future performance of the property. The value of this transaction to you depends on tax and other factors which should be evaluated by your tax, financial and legal advisors. You and your advisors should conduct a careful independent investigation of the property to determine to your satisfaction the stability of the property for your needs.

# 637 Sheridan Way

1st level plan



2 SECOND LEVEL PLAN-1/16"=1'-0"



1-FIRST LEVEL PLAN-1/16"=1'-0"

cline **collaborative**  
 5218 harvard street ventura california 93003  
 P805-766-3611 Elyson@clinecollab.com

House-Sheridan

637 Sheridan Way Ventura, CA 93001

Another Project by Jason Rothman

5/21/2019 2:22:21 PM Revision Date

Building Plans  
**A-1.1**



Real Estate Investments | Property Management

web [www.beckergrp.com](http://www.beckergrp.com) tele 805.653.6794 fax 805.653.6795 license 01213236  
 street 40 South Ash Street Ventura, CA 93001 mail PO Box 23277, Ventura, CA 93002

The information above has been obtained from sources believed reliable. While we do not doubt it's accuracy, we have not verified it and make no guarantee, warranty or representation about it. It is your responsibility to independently confirm it's accuracy and completeness. Any projections, opinions, assumption or estimates used are for example only and do not represent the current or future performance of the property. The value of this transaction to you depends on tax and other factors which should be evaluated by your tax, financial and legal advisors. You and your advisors should conduct a careful independent investigation of the property to determine to your satisfaction the stability of the property for your needs.

# 637 Sheridan Way

mezzanine/roof deck level plan



cline **collaborative**  
5218 harvard street ventura, california 93003  
P:805-766-3611 E:tyson@clineclab.com

House-Sheridan

637 Sheridan Way Ventura, CA 93001

Another Project by Jason Rothman

Building Plans  
A-1.2

5/21/2019 2:22:57 PM Revision Date



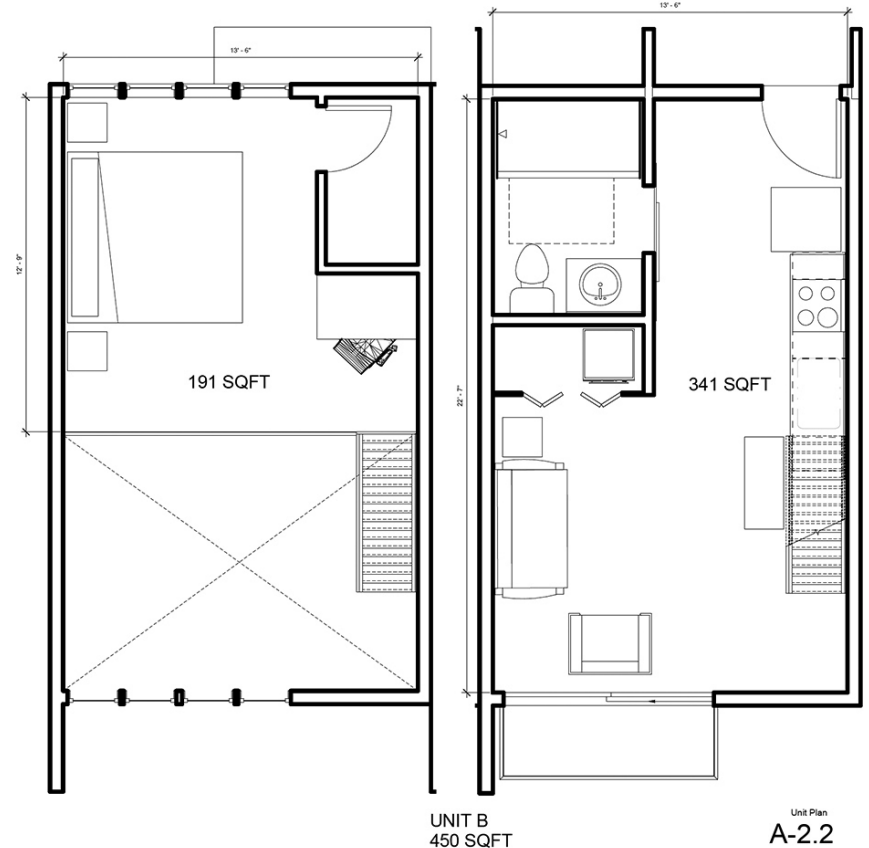
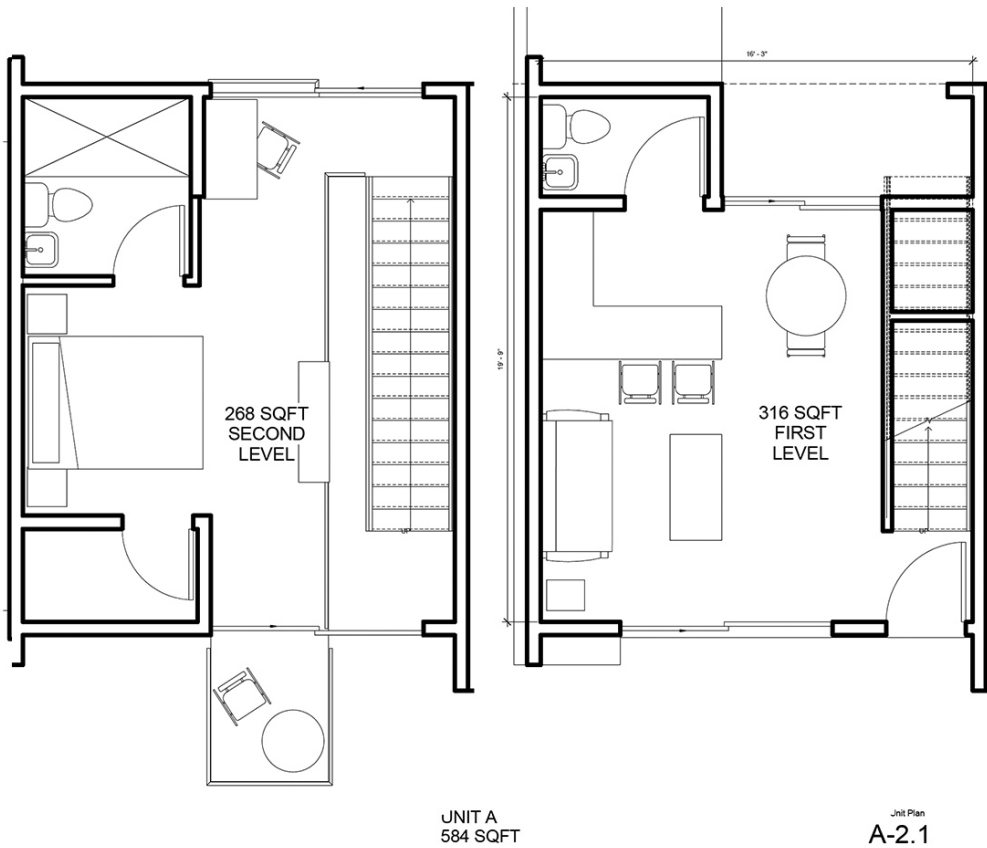
Real Estate Investments | Property Management

web [www.beckergrp.com](http://www.beckergrp.com) tele 805.653.6794 fax 805.653.6795 license 01213236  
street 40 South Ash Street Ventura, CA 93001 mail PO Box 23277, Ventura, CA 93002

The information above has been obtained from sources believed reliable. While we do not doubt it's accuracy, we have not verified it and make no guarantee, warranty or representation about it. It is your responsibility to independently confirm it's accuracy and completeness. Any projections, opinions, assumption or estimates used are for example only and do not represent the current or future performance of the property. The value of this transaction to you depends on tax and other factors which should be evaluated by your tax, financial and legal advisors. You and your advisors should conduct a careful independent investigation of the property to determine to your satisfaction the stability of the property for your needs.

# 637 Sheridan Way

floor plans – unit a + unit b



cline **collaborative**  
5218 harvard street ventura california 93003  
P805-766-3611 Etyson@clinecollab.com

House-Sheridan

637 Sheridan Way Ventura, CA 93001

Another Project by Jason Rothman

5/21/2019 2:23:02 PM Revision Date



Real Estate Investments | Property Management

web [www.beckergrp.com](http://www.beckergrp.com) tele 805.653.6794 fax 805.653.6795 license 01213236  
street 40 South Ash Street Ventura, CA 93001 mail PO Box 23277, Ventura, CA 93002

The information above has been obtained from sources believed reliable. While we do not doubt it's accuracy, we have not verified it and make no guarantee, warranty or representation about it. It is your responsibility to independently confirm it's accuracy and completeness. Any projections, opinions, assumption or estimates used are for example only and do not represent the current or future performance of the property. The value of this transaction to you depends on tax and other factors which should be evaluated by your tax, financial and legal advisors. You and your advisors should conduct a careful independent investigation of the property to determine to your satisfaction the stability of the property for your needs.



# 637 Sheridan Way

south east



illustration credit: cline collaborative



Real Estate Investments | Property Management

web [www.beckergrp.com](http://www.beckergrp.com) tele 805.653.6794 fax 805.653.6795 license 01213236  
street 40 South Ash Street Ventura, CA 93001 mail PO Box 23277, Ventura, CA 93002

The information above has been obtained from sources believed reliable. While we do not doubt it's accuracy, we have not verified it and make no guarantee, warranty or representation about it. It is your responsibility to independently confirm it's accuracy and completeness. Any projections, opinions, assumption or estimates used are for example only and do not represent the current or future performance of the property. The value of this transaction to you depends on tax and other factors which should be evaluated by your tax, financial and legal advisors. You and your advisors should conduct a careful independent investigation of the property to determine to your satisfaction the stability of the property for your needs.



# 637 Sheridan Way

south west



illustration credit: cline collaborative



Real Estate Investments | Property Management

web [www.beckergrp.com](http://www.beckergrp.com) tele 805.653.6794 fax 805.653.6795 license 01213236  
street 40 South Ash Street Ventura, CA 93001 mail PO Box 23277, Ventura, CA 93002

The information above has been obtained from sources believed reliable. While we do not doubt it's accuracy, we have not verified it and make no guarantee, warranty or representation about it. It is your responsibility to independently confirm it's accuracy and completeness. Any projections, opinions, assumption or estimates used are for example only and do not represent the current or future performance of the property. The value of this transaction to you depends on tax and other factors which should be evaluated by your tax, financial and legal advisors. You and your advisors should conduct a careful independent investigation of the property to determine to your satisfaction the stability of the property for your needs.



# 637 Sheridan Way

south west roof plaza/south west front patio



illustration credits: cline collaborative



Real Estate Investments | Property Management

web [www.beckergrp.com](http://www.beckergrp.com) tele 805.653.6794 fax 805.653.6795 license 01213236  
street 40 South Ash Street Ventura, CA 93001 mail PO Box 23277, Ventura, CA 93002

The information above has been obtained from sources believed reliable. While we do not doubt it's accuracy, we have not verified it and make no guarantee, warranty or representation about it. It is your responsibility to independently confirm it's accuracy and completeness. Any projections, opinions, assumption or estimates used are for example only and do not represent the current or future performance of the property. The value of this transaction to you depends on tax and other factors which should be evaluated by your tax, financial and legal advisors. You and your advisors should conduct a careful independent investigation of the property to determine to your satisfaction the stability of the property for your needs.



# 637 Sheridan Way

south west upper deck entry/south west upper decks



illustration credits: cline collaborative



Real Estate Investments | Property Management

web [www.beckergrp.com](http://www.beckergrp.com) tele 805.653.6794 fax 805.653.6795 license 01213236  
street 40 South Ash Street Ventura, CA 93001 mail PO Box 23277, Ventura, CA 93002

The information above has been obtained from sources believed reliable. While we do not doubt it's accuracy, we have not verified it and make no guarantee, warranty or representation about it. It is your responsibility to independently confirm it's accuracy and completeness. Any projections, opinions, assumption or estimates used are for example only and do not represent the current or future performance of the property. The value of this transaction to you depends on tax and other factors which should be evaluated by your tax, financial and legal advisors. You and your advisors should conduct a careful independent investigation of the property to determine to your satisfaction the stability of the property for your needs.



# 637 Sheridan Way

south west plaza



illustration credit: cline collaborative



Real Estate Investments | Property Management

web [www.beckergrp.com](http://www.beckergrp.com) tele 805.653.6794 fax 805.653.6795 license 01213236  
street 40 South Ash Street Ventura, CA 93001 mail PO Box 23277, Ventura, CA 93002

The information above has been obtained from sources believed reliable. While we do not doubt it's accuracy, we have not verified it and make no guarantee, warranty or representation about it. It is your responsibility to independently confirm it's accuracy and completeness. Any projections, opinions, assumption or estimates used are for example only and do not represent the current or future performance of the property. The value of this transaction to you depends on tax and other factors which should be evaluated by your tax, financial and legal advisors. You and your advisors should conduct a careful independent investigation of the property to determine to your satisfaction the stability of the property for your needs.



# 637 Sheridan Way

south west stair entry



illustration credit: cline collaborative



Real Estate Investments | Property Management

web [www.beckergrp.com](http://www.beckergrp.com) tele 805.653.6794 fax 805.653.6795 license 01213236  
street 40 South Ash Street Ventura, CA 93001 mail PO Box 23277, Ventura, CA 93002

The information above has been obtained from sources believed reliable. While we do not doubt it's accuracy, we have not verified it and make no guarantee, warranty or representation about it. It is your responsibility to independently confirm it's accuracy and completeness. Any projections, opinions, assumption or estimates used are for example only and do not represent the current or future performance of the property. The value of this transaction to you depends on tax and other factors which should be evaluated by your tax, financial and legal advisors. You and your advisors should conduct a careful independent investigation of the property to determine to your satisfaction the stability of the property for your needs.