

For Lease

Mason Creek Retail

2847 N. Eagle Road, Ste 100, Meridian, ID



AVAILABLE PROPERTY

Location	Eagle Road South of Ustick Road
Building Size	5,904 SF
Suite Size	1,351 SF
Lease Rate	\$24.50 SF/yr (NNN)
Lot Size	±48,000 ADT
NNN Est	\$5.70
Available	Immediately - Contact Agent for details and showing instructions

SITE INFORMATION

- Prime location with excellent Eagle Road frontage
- Ample on-site parking
- Ingress/Egress from N. Eagle and E. Ustick Roads
- Shadow anchored by Lowe's, Hobby Lobby, Dick's Sporting Goods, Kohls, Trader Joe's
- Co-tenancy include Jimmy John's, Envy Nails, Geico Insurance, Millie Grace Boutique & JoS. A. Bank Clothiers



DEMOGRAPHICS	1 Mile	3 Miles	5 Miles
Total Households	3,023	24,771	62,328
Total Population	8,623	68,448	169,175
Average HH Income	\$87,558	\$77,751	\$75,302



5531 N. Glenwood St.,
Boise, ID 83714
208-229-2020

Mike Erkmann, CCIM

mike@naiselect.com
C: 208-629-6003
D: 208-229-6015

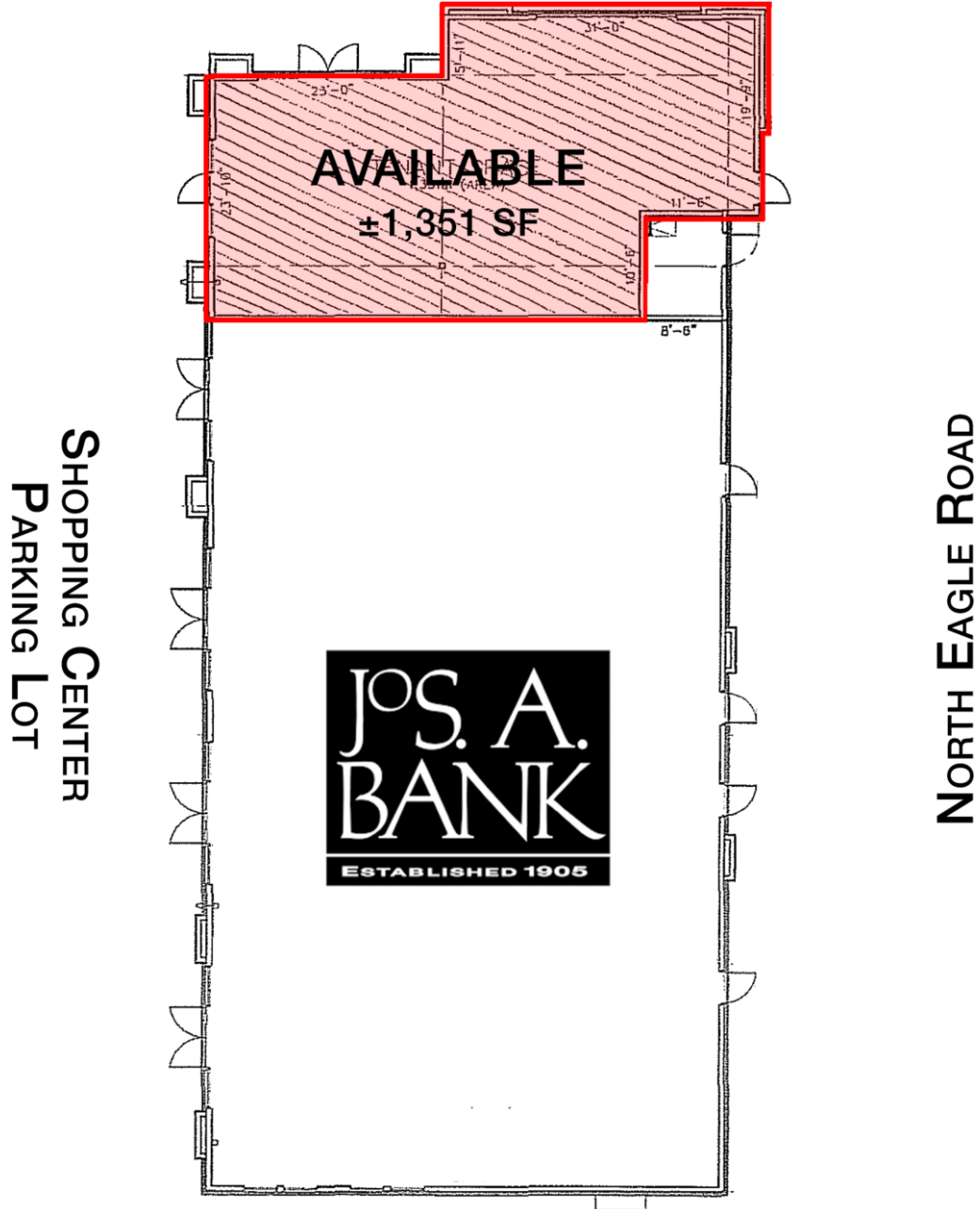
Ben Kneadler CCIM

ben@naiselect.com
C: 208-353-2242
D: 208-229-6002

For Lease

Mason Creek Retail

1,351 SF | \$24.50 SF/yr



NAISelect

5531 N. Glenwood St.,
Boise, ID 83714
208-229-2020

Mike Erkmann, CCIM

mike@naiselect.com
C: 208-629-6003
D: 208-229-6015

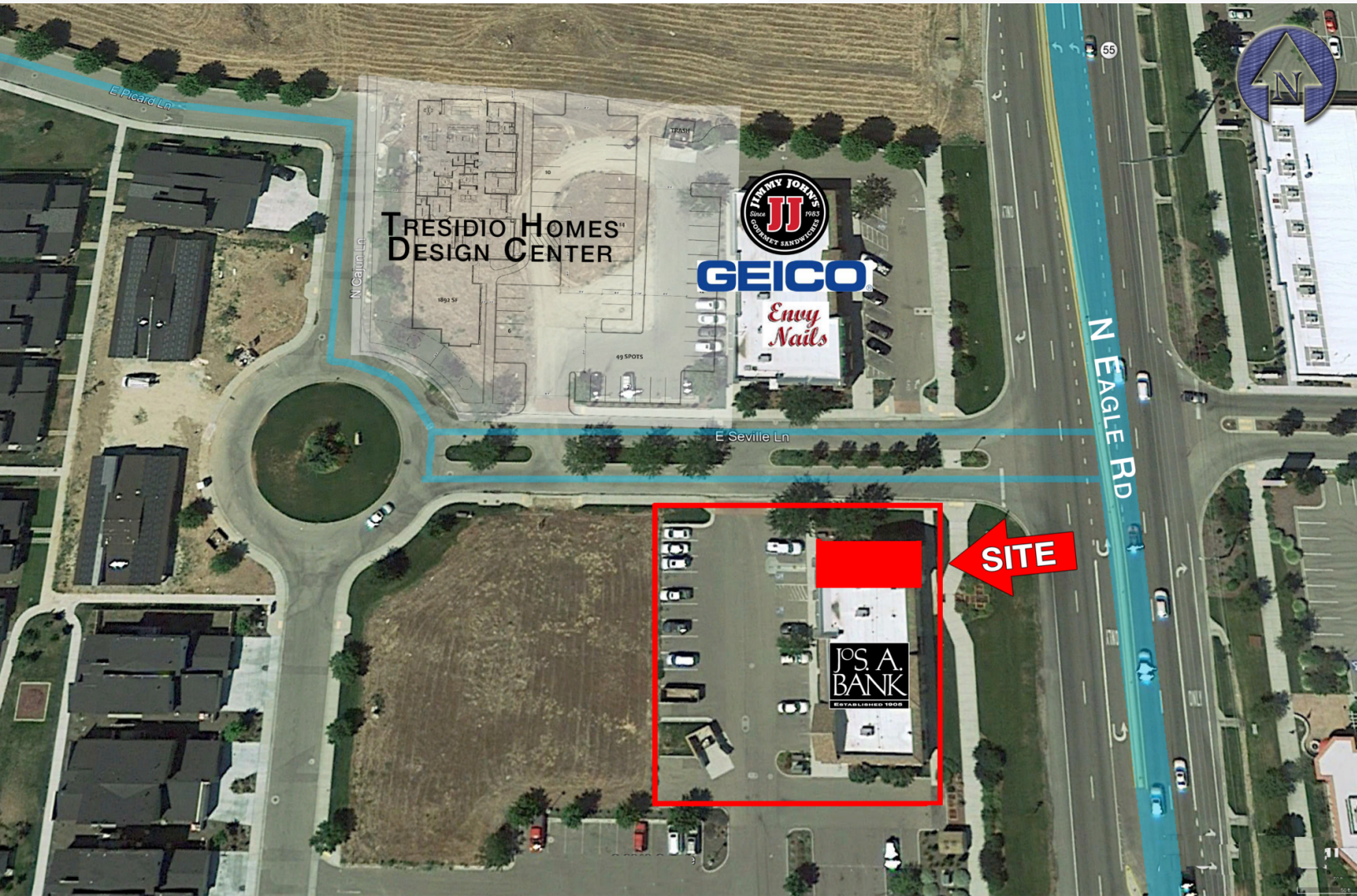
Ben Kneadler CCIM

ben@naiselect.com
C: 208-353-2242
D: 208-229-6002

For Lease

Mason Creek Retail

1,351 SF | \$24.50 SF/yr



NAISelect

5531 N. Glenwood St.,
Boise, ID 83714
208-229-2020

Mike Erkmann, CCIM

mike@naiselect.com
C: 208-629-6003
D: 208-229-6015

Ben Kneadler CCIM

ben@naiselect.com
C: 208-353-2242
D: 208-229-6002

For Lease

Mason Creek Retail

1,351 SF | \$24.50 SF/yr



CENTREPOINT MARKETPLACE

- KOHL'S
- HOBBY LOBBY
- Walgreens
- SHOE CARNIVAL
- DICK'S SPORTING GOODS
- GRADE POWER
- Panera BREAD
- SALLY BEAUTY
- DOWNEAST Home & Clothing
- usbank
- TOYTOWN
- WINGERS
- Qdoba MEXICAN GRILL
- bella blue BOUTIQUE
- SAS
- verizon

SELWAY APARTMENTS

- WALL OF MOUNTAIN
- Chevron
- SALES

USTICK MARKETPLACE

- LOWE'S
- TACO BELL
- Costa Vida
- Sizzler
- HOME FEDERAL BANK
- PRISTINE
- WING-STOP
- KNEADERS BAKERY & CAFE
- O'Reilly AUTO PARTS
- EINSTEIN'S BILLY
- Dunkley
- KeyBank

MASON CREEK

- TRINITY JOINTS
- DISCOUNT TIRE
- GEICO
- JOS. A. BANK
- complete nutrition

VillaSport ATHLETIC CLUB AND SPA

SITE

GATEWAY MARKETPLACE

- TRADER JOE'S
- FIVE GUYS BURGERS and FRIES
- McDonald's
- TRINITY JOINTS
- GOLETS CRY
- FIREHOUSE SUBS
- MATHNASIUM
- Orangetheory FITNESS
- LePeep
- Idaho Central CREDIT UNION

NAISelect

5531 N. Glenwood St.,
Boise, ID 83714
208-229-2020

Mike Erkmann, CCIM

mike@naiselect.com
C: 208-629-6003
D: 208-229-6015

Ben Kneadler CCIM

ben@naiselect.com
C: 208-353-2242
D: 208-229-6002