

NEW PERSHING

FOR LEASE

DOWNTOWN LOS ANGELES

108 E 5TH ST, LOS ANGELES, CA 9001



FOR MORE INFORMATION PLEASE CONTACT:

MATTHEW FAINCHTEIN

(310) 595-2234

matthew.fainchtein@cushwake.com

Lic. #001503546

CARTER MAGNIN

(310) 595-2203

carter.magnin@cushwake.com

Lic. #01909728



CUSHMAN & WAKEFIELD OF CALIFORNIA, INC.
10250 CONSTELLATION BLVD., SUITE 2200
LOS ANGELES, CA 90067 | USA

NEW PERSHING

DOWNTOWN LOS ANGELES

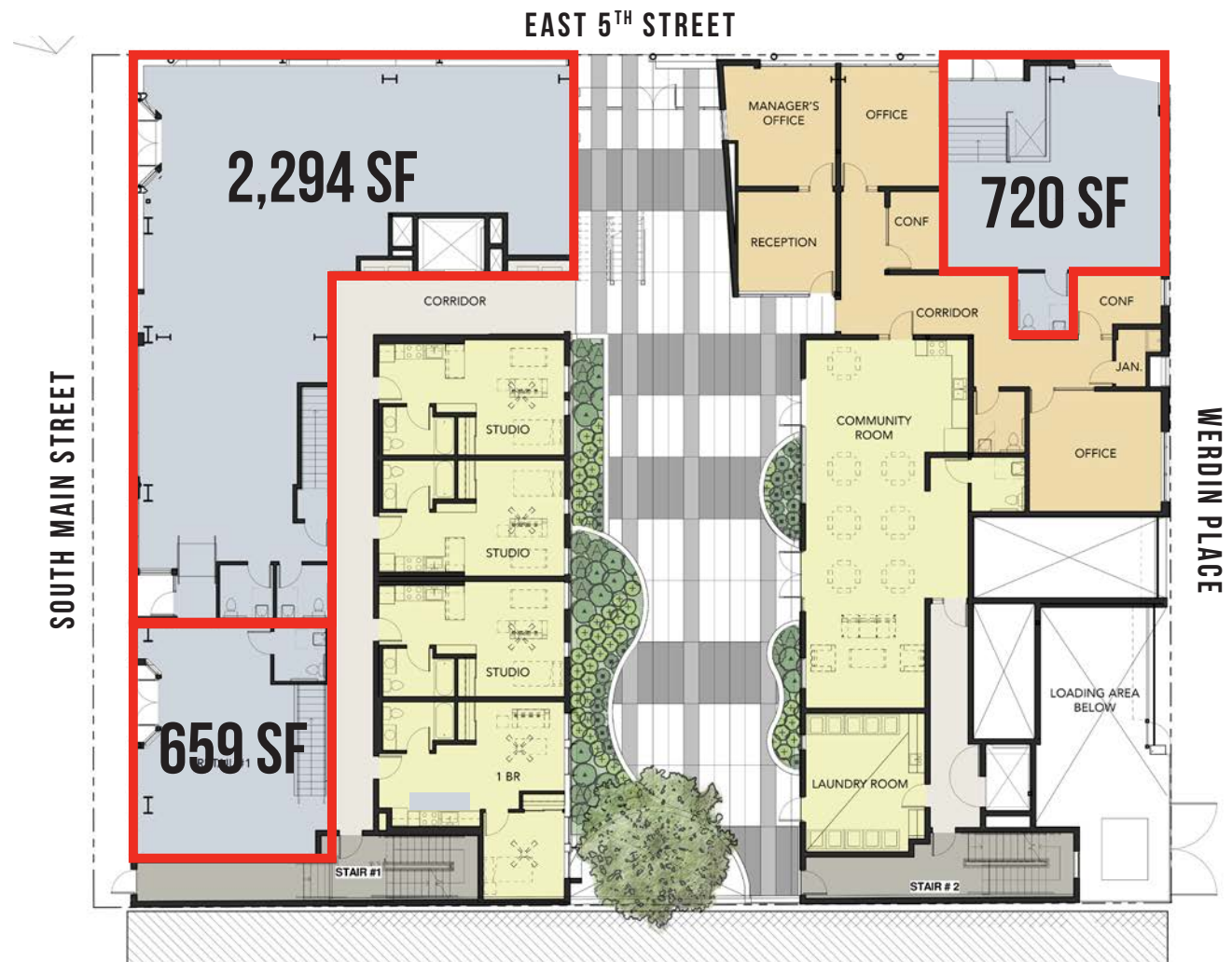
FOR LEASE

Historic building & façade with fully updated building systems

Mixed use development with 69 residential units above ground floor retail

Situated on Downtown's Restaurant Row

Ideal uses include Retail, Incidental Food, Coffee & Fitness



NEW PERSHING

DOWNTOWN LOS ANGELES

FOR LEASE



FOR MORE INFORMATION PLEASE CONTACT:

MATTHEW FAINCHTEIN

(310) 595-2234

matthew.fainchtein@cushwake.com

Lic. #001503546

CARTER MAGNIN

(310) 595-2203

carter.magnin@cushwake.com

Lic. #01909728



CUSHMAN & WAKEFIELD OF CALIFORNIA, INC.
10250 CONSTELLATION BLVD., SUITE 2200
LOS ANGELES, CA 90067 | USA