



FOR LEASE

2,285 SF IN WILLIAMSBURG

203 BEDFORD AVENUE | BROOKLYN, NY

Between N. 5th & 6th Streets



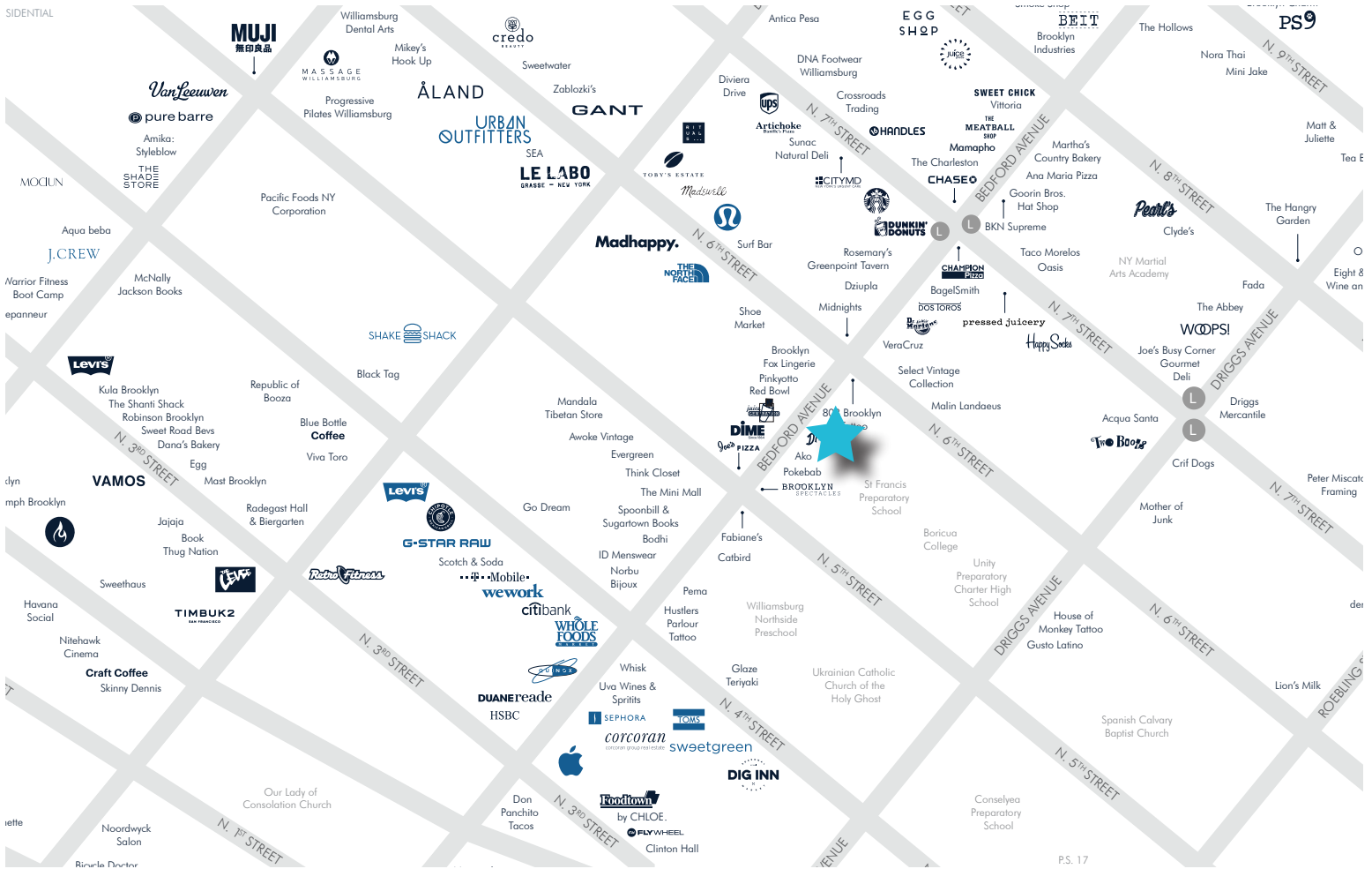
SCOTT SHER

Managing Director

scottsher@dkatz.com

(212) 257-5060

KATZ & ASSOCIATES



THE SPACE

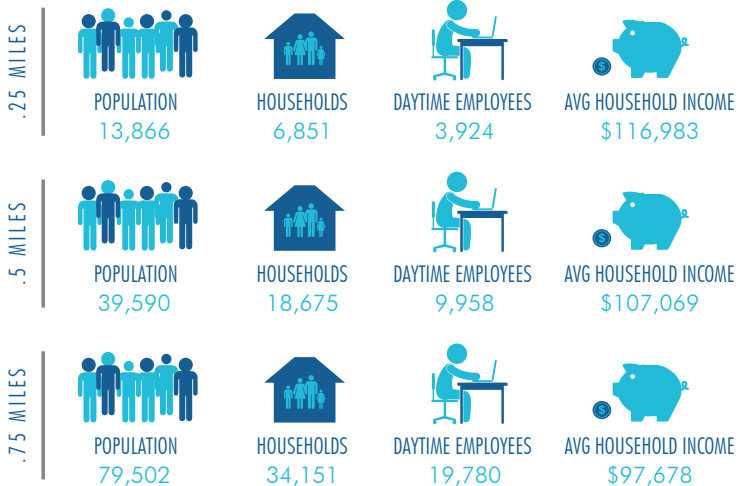
Prime retail space in the heart of Williamsburg, one of the hottest neighborhoods and retail districts in New York

1,741 SF available on the ground level (17' ceiling height) with an additional 544 SF available on the lower level (9' ceiling height)

15 feet of frontage on Bedford Avenue between North 5th and 6th Streets

Nearby tenants include: Whole Foods, Apple, WeWork, Equinox, Sweetgreen, G-Star Raw, Levis, Sabon, T-Mobile, Tom's, Vans, Urban Outfitters, Madewell, J. Crew, lululemon, Shake Shack, Scotch & Soda, Space NK

DEMOGRAPHICS



L L TRAIN CONTINUES TO OPERATE

SITE | HIGHLIGHTS

203 BEDFORD AVENUE
BROOKLYN, NY

