

**AVISON  
YOUNG**



1907-1911

**W. Cumberland Street**  
Dunn, NC 28334

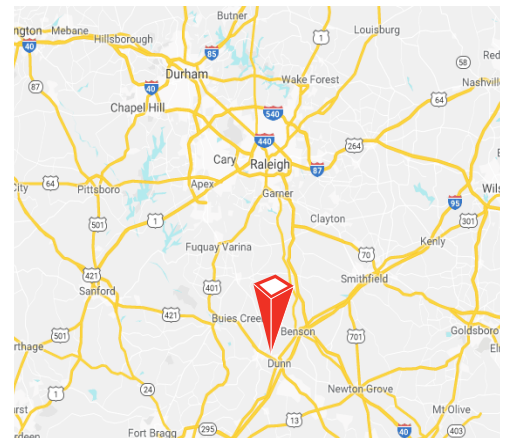
Partnership. Performance.

## Opportunity

Two suites available for lease for a combined total of 5,250 sf in Harnett County's Dunn Plaza. 1907 W. Cumberland is a 1,500 sf space positioned for retail or office use featuring two hard wall offices, two restrooms, one shower and a storage area. 1911 W. Cumberland features 3,750 sf for retail or office use. Tenant is responsible for utilities, janitorial, trash and recycling. Dunn Plaza boasts a variety of tenants including Roses, Yamato Japanese House of Steak and Lee Furniture of Dunn.

**Jon Bradley**  
Senior Associate  
919.420.1567  
jon.bradley@avisonyoung.com

**Justin Booth**  
Senior Vice President  
919.866.4262  
Justin.booth@avisonyoung.com



Platinum member

# 1907

## W. Cumberland Street

Dunn, NC 28334

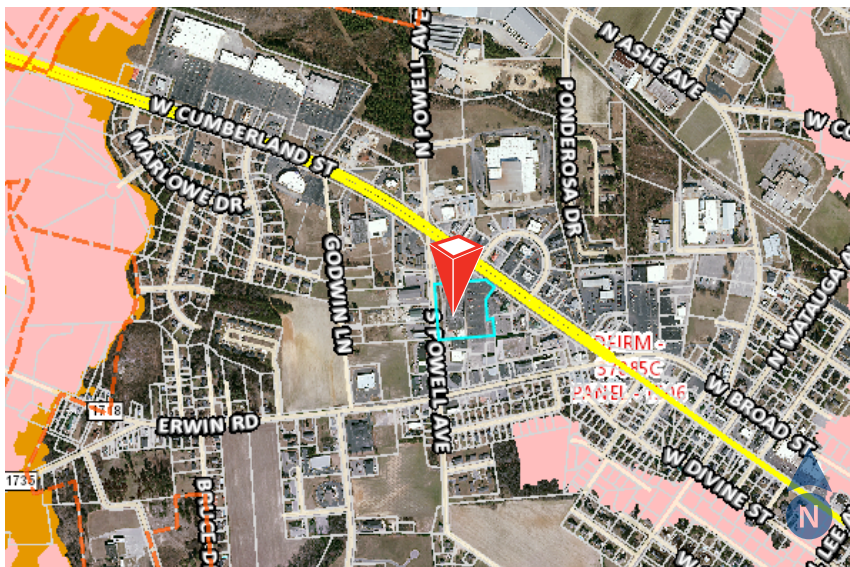
### Location Map



### Available for Lease

Available	1907 W. Cumberland (1,500 sf) 1911 W. Cumberland (3,750 sf) <i>*can be combined for 5,250 sf</i>
Year Built	1969; remodeled 1986
Construction	Concrete block
Restrooms	Two
Parking	4/1,000 sf
Pricing	1907 - \$1500/month 1911 - \$2500/month

### Flood Map



**Jon Bradley**  
Senior Associate  
919.420.1567  
jon.bradley@avisonyoung.com

**Justin Booth**  
Senior Vice President  
919.866.4262  
Justin.booth@avisonyoung.com



# 1907

W. Cumberland Street  
Dunn, NC 28334

## Amenities



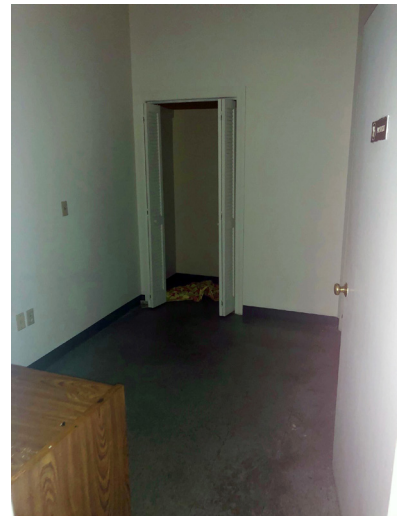
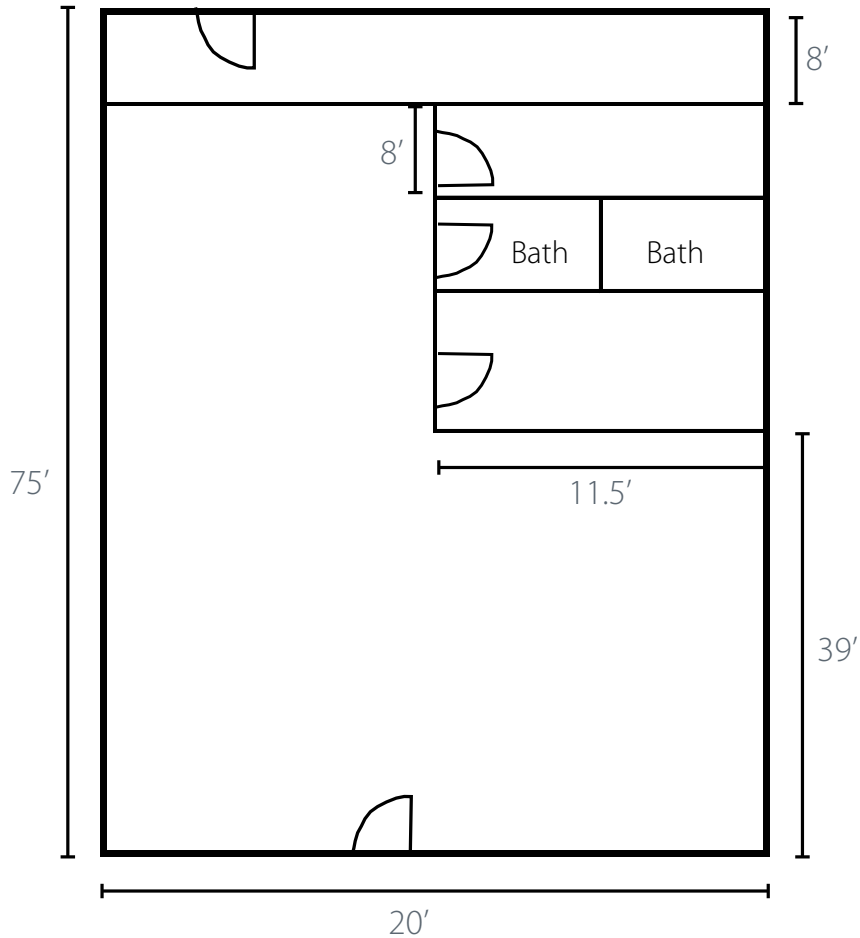
**Jon Bradley**  
Senior Associate  
919.420.1567  
[jon.bradley@avisonyoung.com](mailto:jon.bradley@avisonyoung.com)

**Justin Booth**  
Senior Vice President  
919.866.4262  
[Justin.booth@avisonyoung.com](mailto:Justin.booth@avisonyoung.com)

# 1907

**W. Cumberland Street**  
Dunn, NC 28334

## Floor Plan - 1907 W. Cumberland



**Jon Bradley**  
Senior Associate  
919.420.1567  
jon.bradley@avisonyoung.com

**Justin Booth**  
Senior Vice President  
919.866.4262  
Justin.booth@avisonyoung.com