

LYNNWOOD EAST BUSINESS PARK

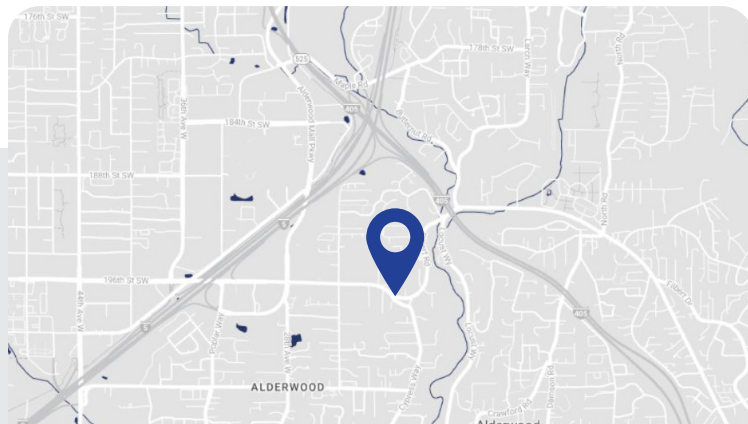
2031 196TH ST SW | STE B-105
LYNNWOOD, WA

FOR SUBLEASE



PROPERTY HIGHLIGHTS

- 2,653 SF TOTAL
- 702 SF OFFICE/BREAKROOM/RESTROOM
- SUBLEASE TERM THROUGH 5/31/25
- 24' CEILING HEIGHT
- CALL BROKER FOR RATES

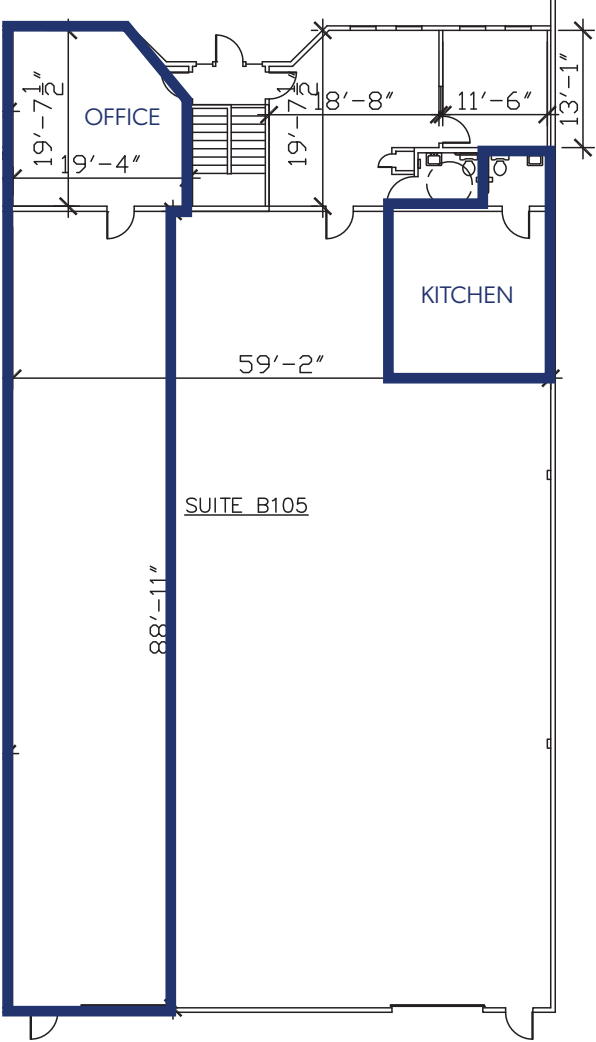


RICHARD RAIFORD
(206) 357-5486
rraiford@andoverco.com

SHANE CROOK
(206) 336-5330
scrook@andoverco.com

 **THE ANDOVER
COMPANY, INC.**
CORFAC INTERNATIONAL

FLOOR PLANS



2,653 SF



The information contained herein has been obtained from reliable sources, but is not guaranteed. A prospective buyer/tenant should verify each item relating to this property and all information contained herein.

RICHARD RAIFORD
(206) 357-5486
rraiford@andoverco.com

SHANE CROOK
(206) 336-5330
scrook@andoverco.com

 **THE ANDOVER
COMPANY, INC.**
CORFAC INTERNATIONAL