

SAN JOSE WEST VALLEY OFFICE FOR LEASE BASCOM COMMERCE CENTER

1190 S. BASCOM AVENUE



Excellent West San Jose location convenient to Highway 280 and Downtown San Jose as well as Hamilton Ave., and the Campbell Area

- Excellent Parking at 4/1000
- Elevator Served
- Remodeled Rest Rooms
- Comcast Available
- Lock Box on stair railing combination D-E-H

Available Spaces

Suite 242 – 1,228 RSF for \$2.60 F.S.

Suite 121 & 129 – 1,155 RSF for \$2.60 F.S.

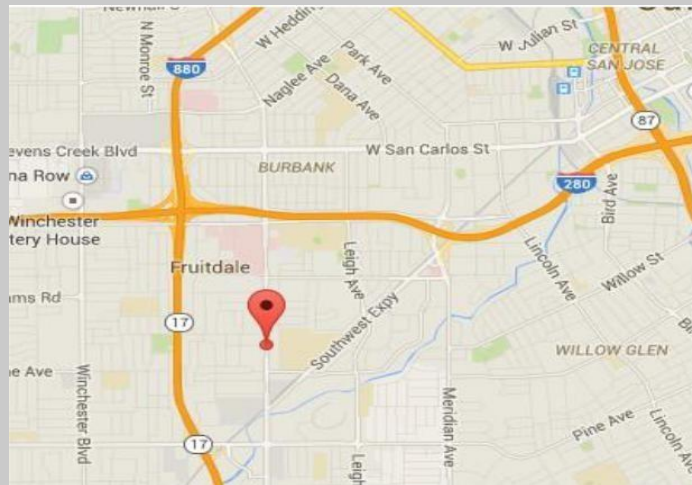
FOR INFORMATION CONTACT PREMIUM PROPERTIES

Don Huntley

BRELicense #00481687

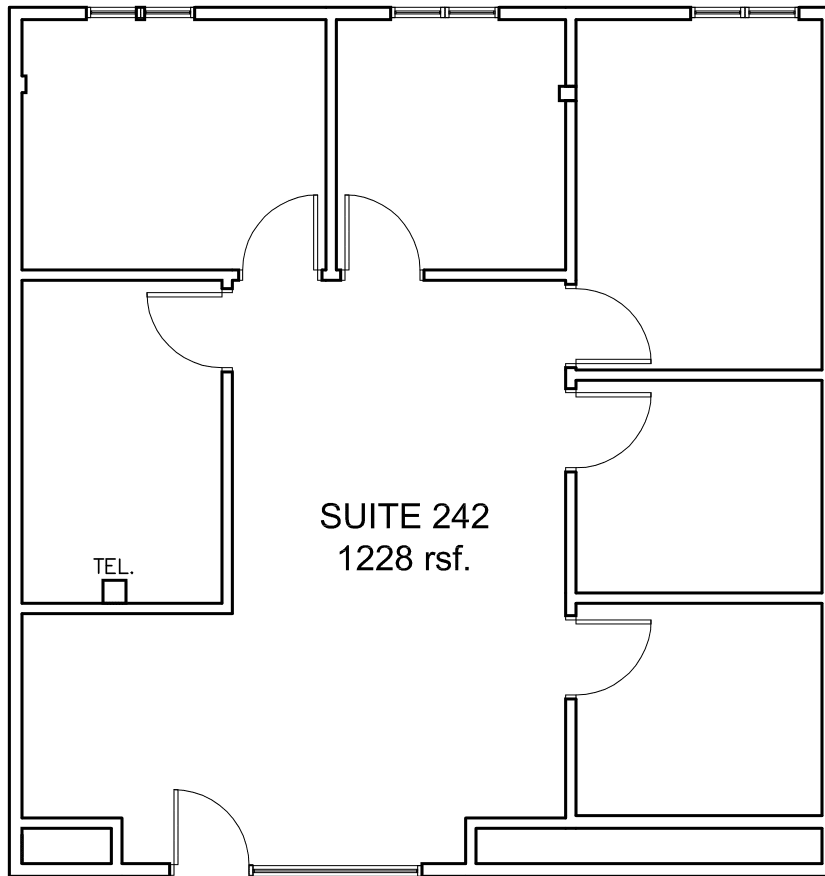
Phone (408) 379-9480 C: (408) 234-7374

premiumproperties@msn.com



The information contained herein has been obtained from sources we deem reliable. We cannot, however, assume responsibility for its accuracy.

**SAN JOSE WEST VALLEY OFFICE FOR LEASE BASCOM COMMERCE
CENTER
1190 S. BASCOM AVENUE**



LEASE AREA PLAN

1190 South Bascom, Suite 242
San Jose, California

SCALE: $\frac{1}{8}'' = 1'-0''$
DRAWN BY: RJH
JOB #: 9018-70-649
DATE: 05 December 2018

**FOR INFORMATION CONTACT PREMIUM
PROPERTIES**

Don Huntley

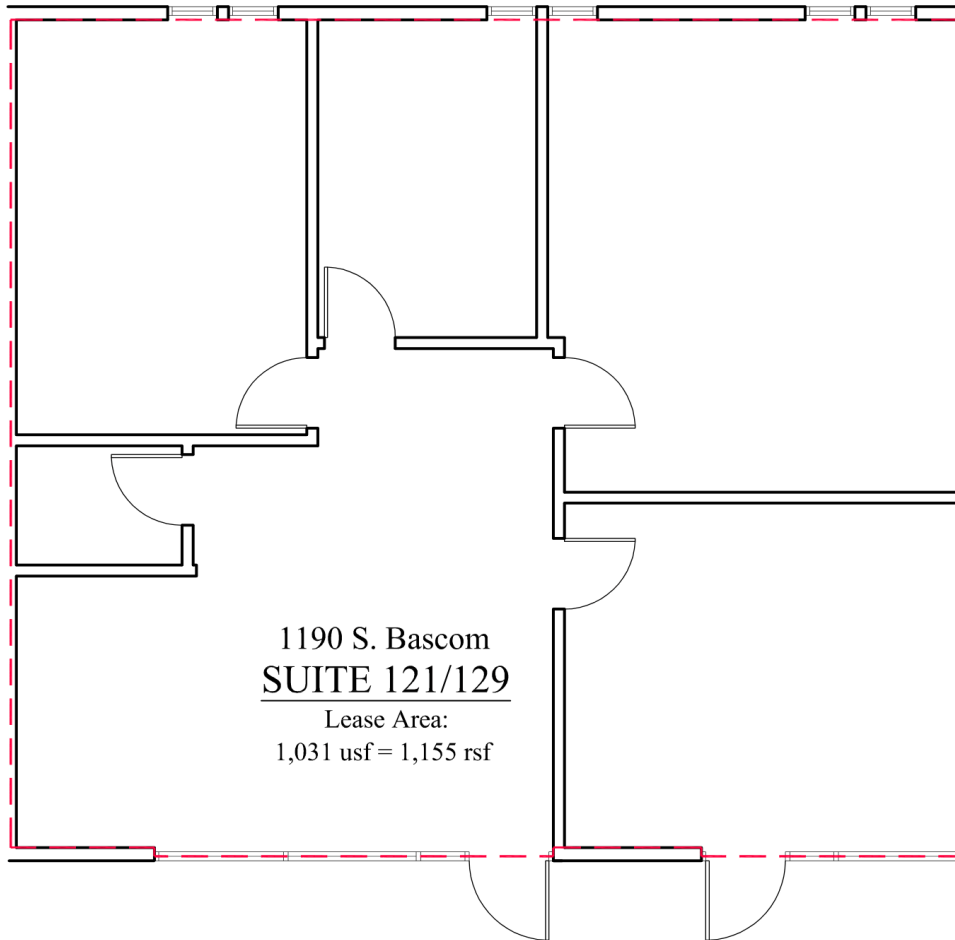
BRELicense #00481687

Phone (408) 379-9480 C: (408) 234-7374

premiumproperties@msn.com

*The information contained herein has been obtained from sources we deem reliable.
We cannot, however, assume responsibility for its accuracy.*

**SAN JOSE WEST VALLEY OFFICE FOR LEASE BASCOM COMMERCE
CENTER
1190 S. BASCOM AVENUE**



**FOR INFORMATION CONTACT PREMIUM
PROPERTIES**

Don Huntley

BRELicense #00481687

Phone (408) 379-9480 C: (408) 234-7374

premiumproperties@msn.com

*The information contained herein has been obtained from sources we deem reliable.
We cannot, however, assume responsibility for its accuracy.*