

Interstate 70 at Zumbehl Road
St. Charles, Missouri

Bogey Hills Plaza

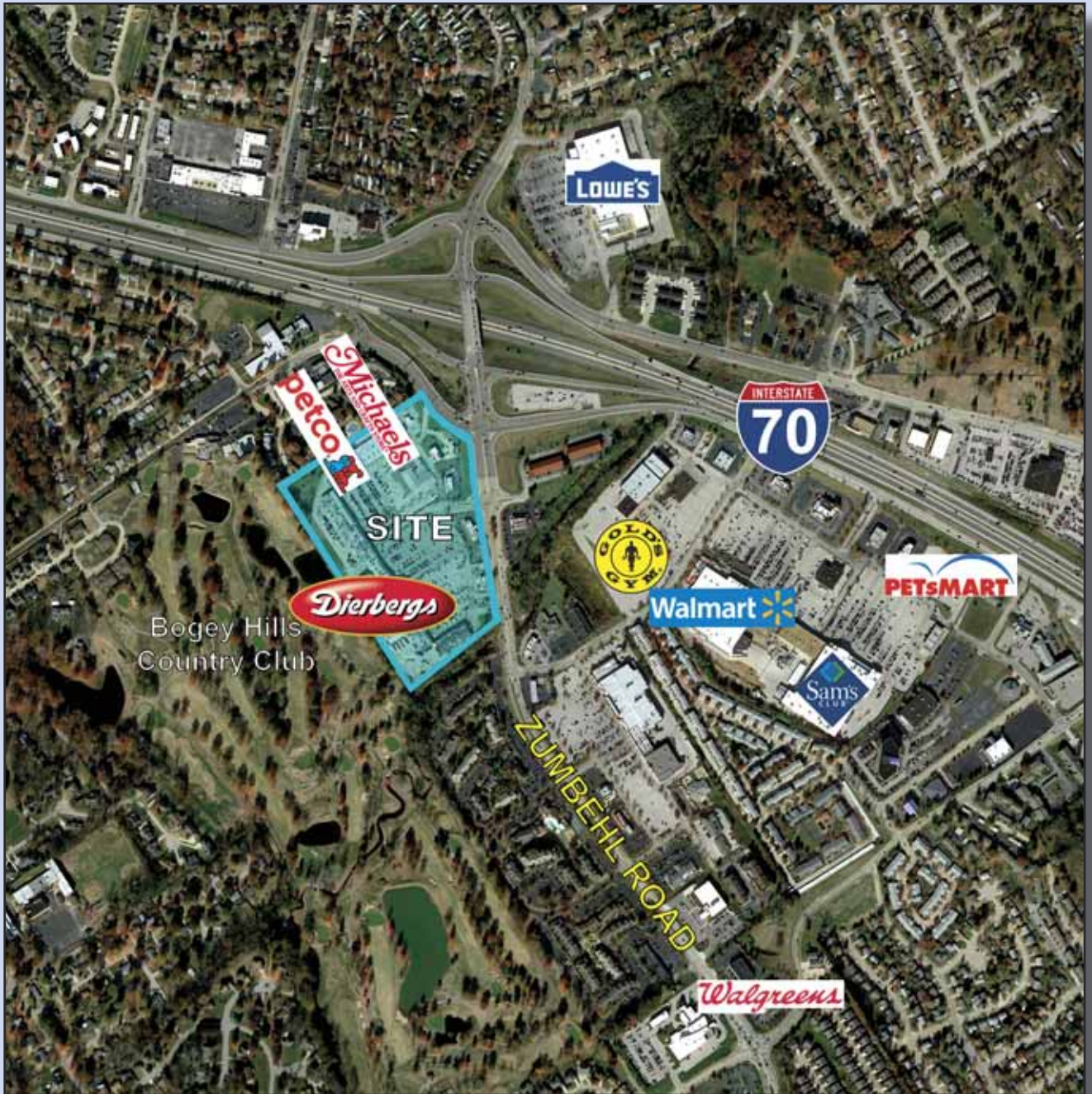


For more information please contact:

(314)991-8900 Phone • (314)991-2474 Fax

Weller Meyer (x226) • wmeyer@caplaco.com

11850 Studt Avenue • P.O. Box 419121 • St. Louis, Missouri 63141



<i>Demographics</i>	<i>1-Mile</i>	<i>3-Mile</i>	<i>5-Mile</i>
2017 Population	13,680	88,949	147,215
2017 Average Household Income	\$69,749	\$82,382	\$86,591

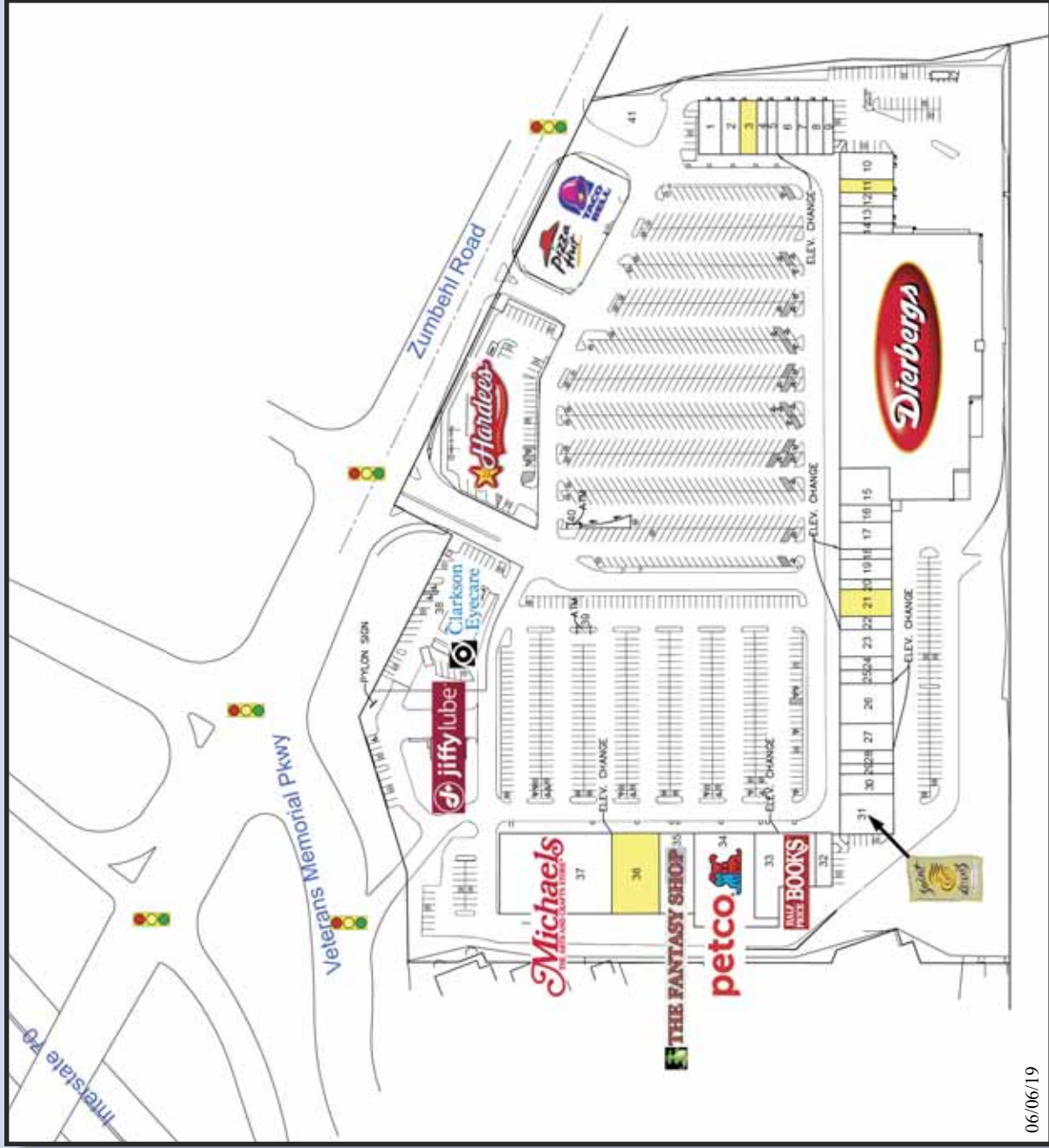


Aerial provided by Google Earth.

Bogey Hills Plaza

Interstate 70 at Zumbehl Road
St. Charles, Missouri

<u>Space</u>	<u>Tenant</u>	<u>Size (sf)</u>
1	Smashburger	2,500
2	Wildbirds Unlimited	2,240
3	Available	2,000
4	Edward Jones	1,200
5	The Nail Salon	1,200
6	Jenny Craig Weight Loss	2,400
7	BK Podiatry	1,200
8	Bogey Hills Animal Hospital	1,920
9	9Round Fitness Gym	1,200
10	Sushi Ai	3,173
11	Available	1,600
12	Kumon Math & Reading	1,600
13	CJ Cleaners	2,000
14	GameStop	1,200
15	Hollrah's Hallmark	4,303
16	Mercy-GoHealth Urgent Care	1,838
17	Kwiatek Optometry	3,200
18	GNC	1,200
19	Pickleman's Deli	2,400
20	Beltone Hearing Aid Center	1,200
21	Available	3,200
22	Fantastic Sam's	1,600
23	ProRehab	3,200
24	Chocolate Chocolate	1,600
25	Shogun Japanese	1,600
26	Fratelli's Restaurant	4,765
27	Cary O'Brien's Design & Color Spa	3,200
28	Key West Dental	1,600
29	Sport Clips	1,200
30	Sally Beauty Supply	2,400
31	St. Louis Bread Company	4,774
32	Smoothie King	2,000
33	Half Price Books	9,048
34	Petco	12,764
35	The Fantasy Shop	6,260
36	Available	8,500
37	Michael's	20,040
38	Clarkson Eyecare	2,432
39	Commerce Bank ATM	
40	First Bank ATM	
41	Tesla Charging Stations	
42	Verizon Cell Tower	



06/06/19



The information contained herein was obtained from sources deemed reliable, however, Capitol Realty Group makes no guarantees as to the completeness or accuracy thereof. This information is subject to error, omission, change in price or conditions, prior sale or lease, or withdrawal without notice.

11850 Studt Avenue • P.O. Box 419121 • St. Louis, Missouri 63141 • Telephone: (314)991-8900 • Fax: (314)991-2474