

FULL FLOOR AVAILABILITY



LAKE AVENUE PLAZA

11

LAKE AVENUE EXTENSION

OFFICE SPACE OPTIONS TO SUIT ANY REQUIREMENT

Three-story office building conveniently located off Exit 4 in Danbury, Connecticut with excellent visibility and accessibility to I-84 and adjacent to Ethan Allen Inn.



CBRE



ENTIRE 2ND FLOOR - 7,245 RSF

AVAILABLE IMMEDIATELY

Rental Rate: \$17.50 per RSF plus tenant electric

- 7,245 RSF (divisible)
- Generous workletter
- Structured covered parking
- Recently renovated all new common areas; bathrooms, roofing and resurfaced parking area
- Short drive to Danbury Metro-North train station
- Hotels and conference centers nearby: Hilton Garden Inn Danbury, Hotel Zero Degrees, Crowne Plaza Danbury, Spring Hill Suites Danbury, Radisson Hotel, Maron Hotel & Suites, and Residence Inn
- Short distance to the Danbury Fair Mall
- Danbury has an average walk score of 38 with 80,893 residents
- 1.9 Miles (9 minutes) to Danbury Metro-North station with service to Westport, Norwalk, Stamford, and Grand Central Terminal
- Join new tenants: FME, Network 7 and Optimization Partners

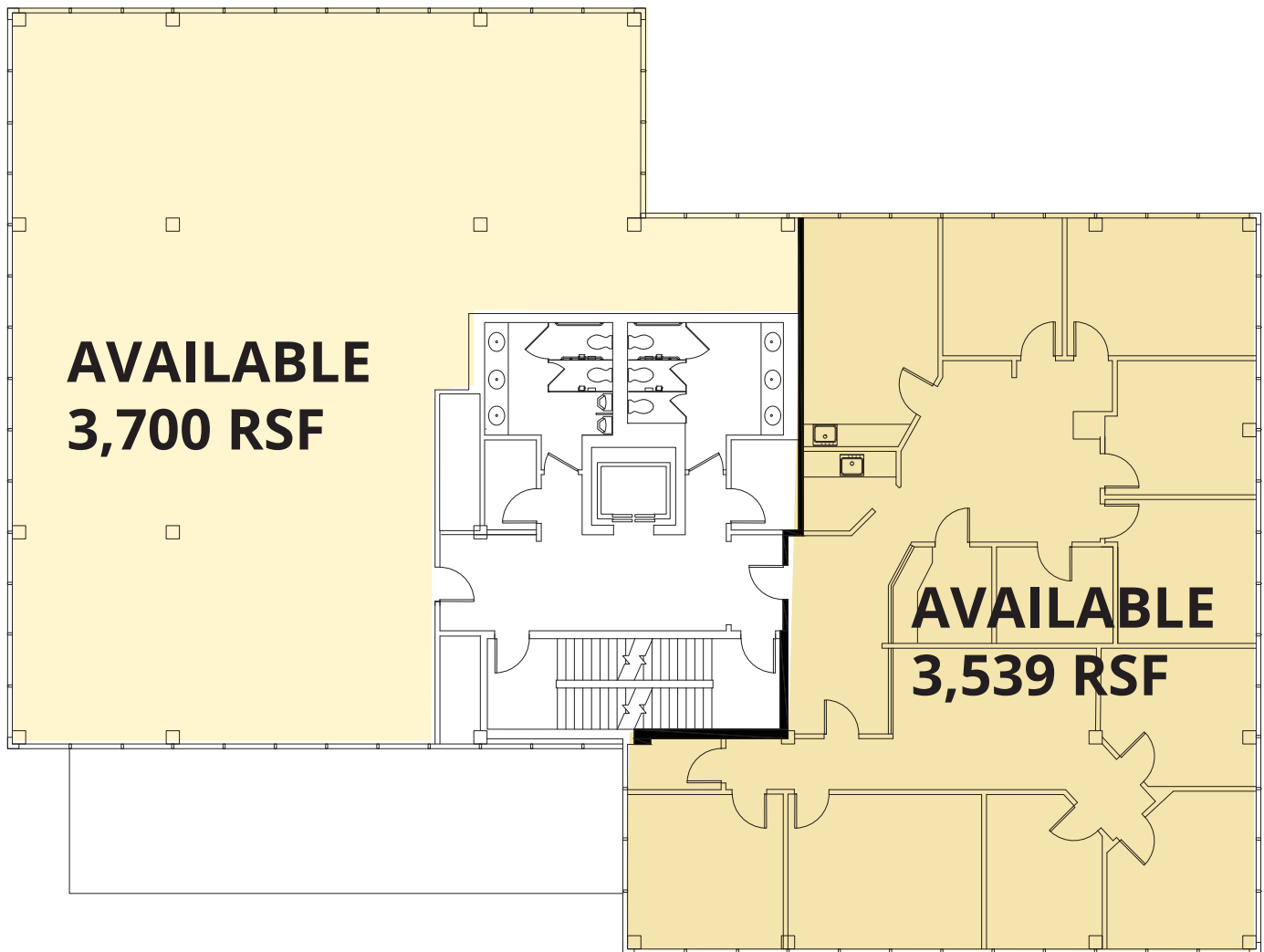






11 LAKE AVENUE EXTENSION

ENTIRE 2ND FLOOR EAST - 7,245 RSF



For more information, please contact:

Barbara Segalini Stilley

+1 203 352 8901

bstilley@cbre.com

CBRE

© 2019 CBRE, Inc. This information has been obtained from sources believed reliable. We have not verified it and make no guarantee, warranty or representation about it. Any projections, opinions, assumptions or estimates used are for example only and do not represent the current or future performance of the property. You and your advisors should conduct a careful, independent investigation of the property to determine to your satisfaction the suitability of the property for your needs.