

237 S. HILLVIEW DRIVE

± 35,208 SF | FOR LEASE

LARGE TENANT IMPROVEMENT ALLOWANCE AVAILABLE

Nick Lazzarni
nick.lazzarini@cushwake.com
+1 408 615 3410
LIC. 01788935

Kelly Yoder
kelly.yoder@cushwake.com
+1 408 615 3427
LIC. 01821117

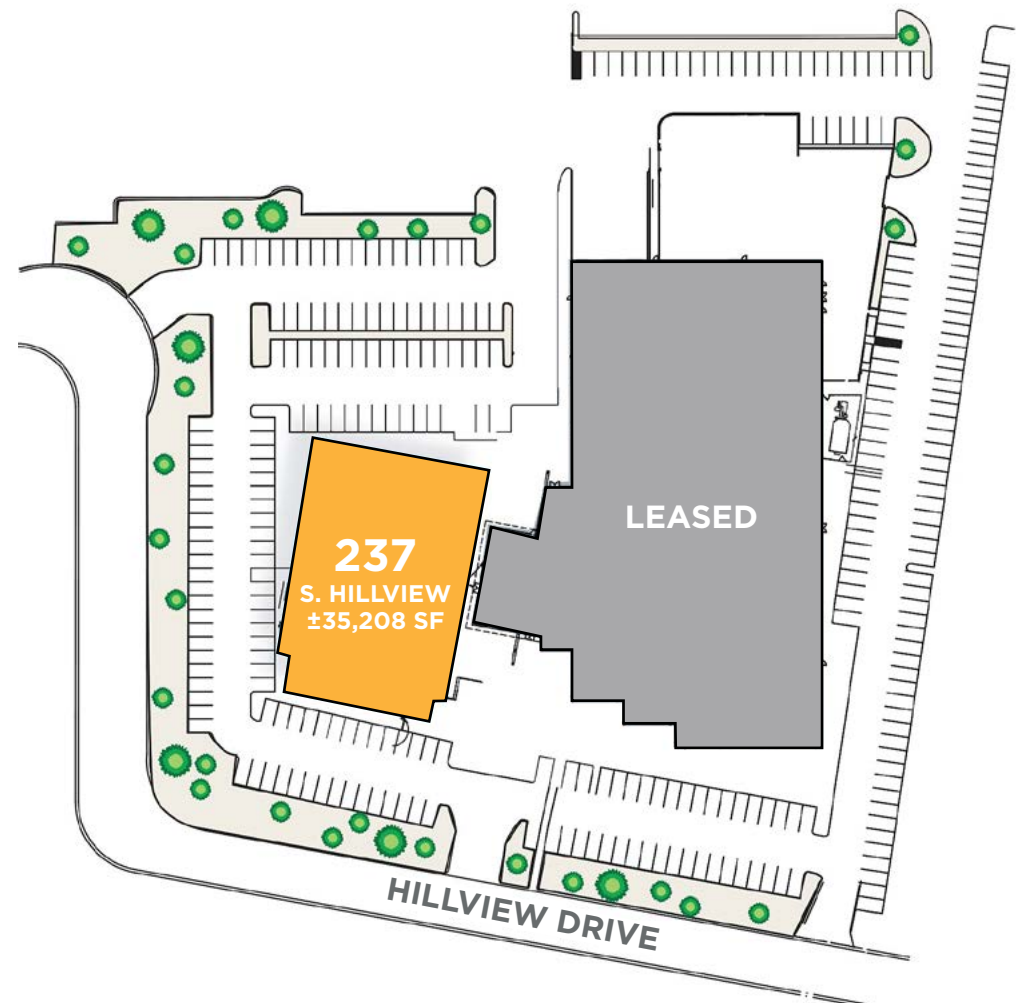
Steve Horton
steve.horton@cushwake.com
+1 408 615 3412
LIC. 01127340



237 S. HILLVIEW DRIVE

HIGHLIGHTS

- ±35,208 SF for Lease
- Prominent 2 Story Building Presence
- Well Capitalized Ownership
- Corporate Headquarters Location
- Tenant Improvements Available
- 1/2 Mile to Retail Amenities
- CDA and Vacuum Lines in Lab Space
- ±3.2/1,000 Parking
- Excellent Access to Highways 880, 680 & 237
- Grade Level Loading
- Five Minute Drive to Milpitas BART Station
- Available Now



DOWNLOAD
BROCHURE

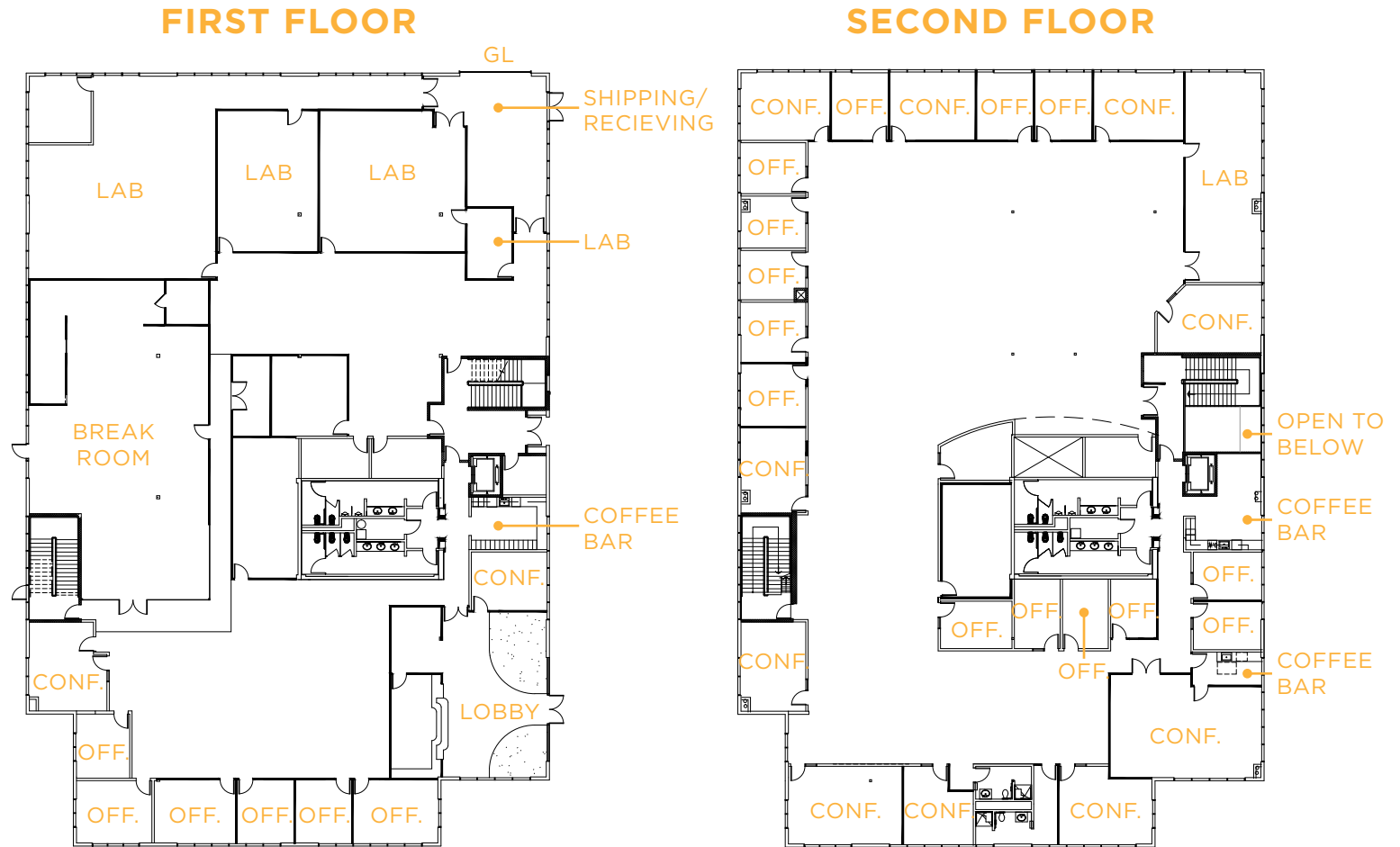
FLOOR PLANS

FIRST FLOOR

- 6 Offices
- 2 Conference Rooms
- 4 Labs
- Break Room
- Coffee Bar

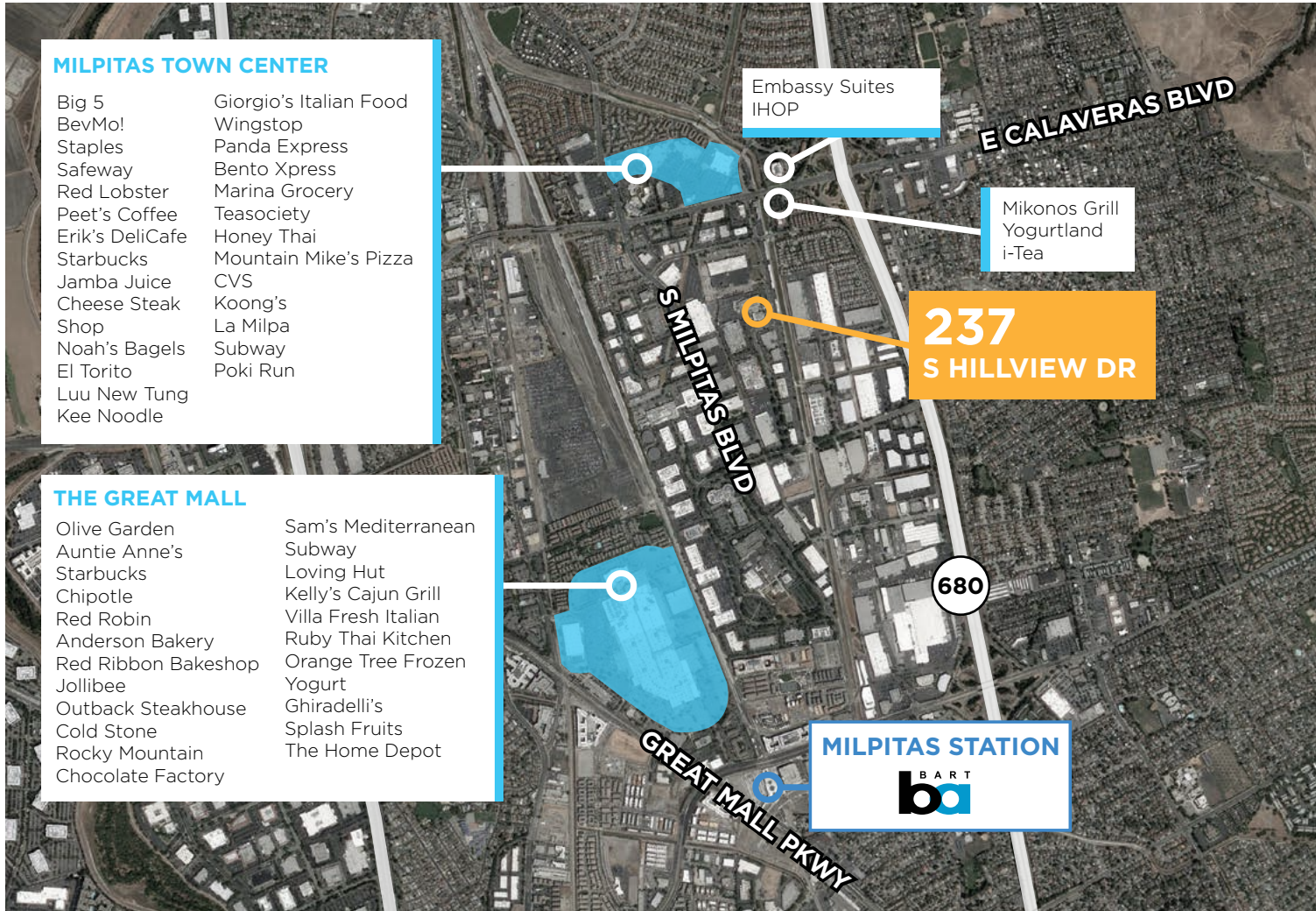
SECOND FLOOR

- 14 Offices
- 10 Conference Rooms
- 1 Lab
- 2 Coffee Bars



237 S. HILLVIEW DRIVE

AMENITIES



237 S. HILLVIEW DRIVE

± 35,208 SF | FOR LEASE

Nick Lazzarni

nick.lazzarini@cushwake.com
+1 408 615 3410
LIC. 01788935

Kelly Yoder

kelly.yoder@cushwake.com
+1 408 615 3427
LIC. 01821117

Steve Horton

steve.horton@cushwake.com
+1 408 615 3412
LIC. 01127340



[VIEW SITE SPECIFIC COVID-19 PREVENTION PLAN](#)

Cushman & Wakefield Copyright 2020. No warranty or representation, express or implied, is made to the accuracy or completeness of the information contained herein, and same is submitted subject to errors, omissions, change of price, rental or other conditions, withdrawal without notice, and to any special listing conditions imposed by the property owner(s). As applicable, we make no representation as to the condition of the property (or properties) in question.