

# Physicians Medical Center

1624 South I Street, Tacoma, WA



**FOR LEASE**

Class A Medical Office Building Located on the  
St. Joseph Campus

**Will Frame**  
253.722.1412  
wframe@kiddermathews.com

**Bill Frame**  
253.722.1403  
bframe@kiddermathews.com

[kiddermathews.com](http://kiddermathews.com)



**PHYSICIANS REALTY TRUST**

**km** **Kidder  
Mathews**



# Physicians Medical Center

1624 South I Street, Tacoma, WA

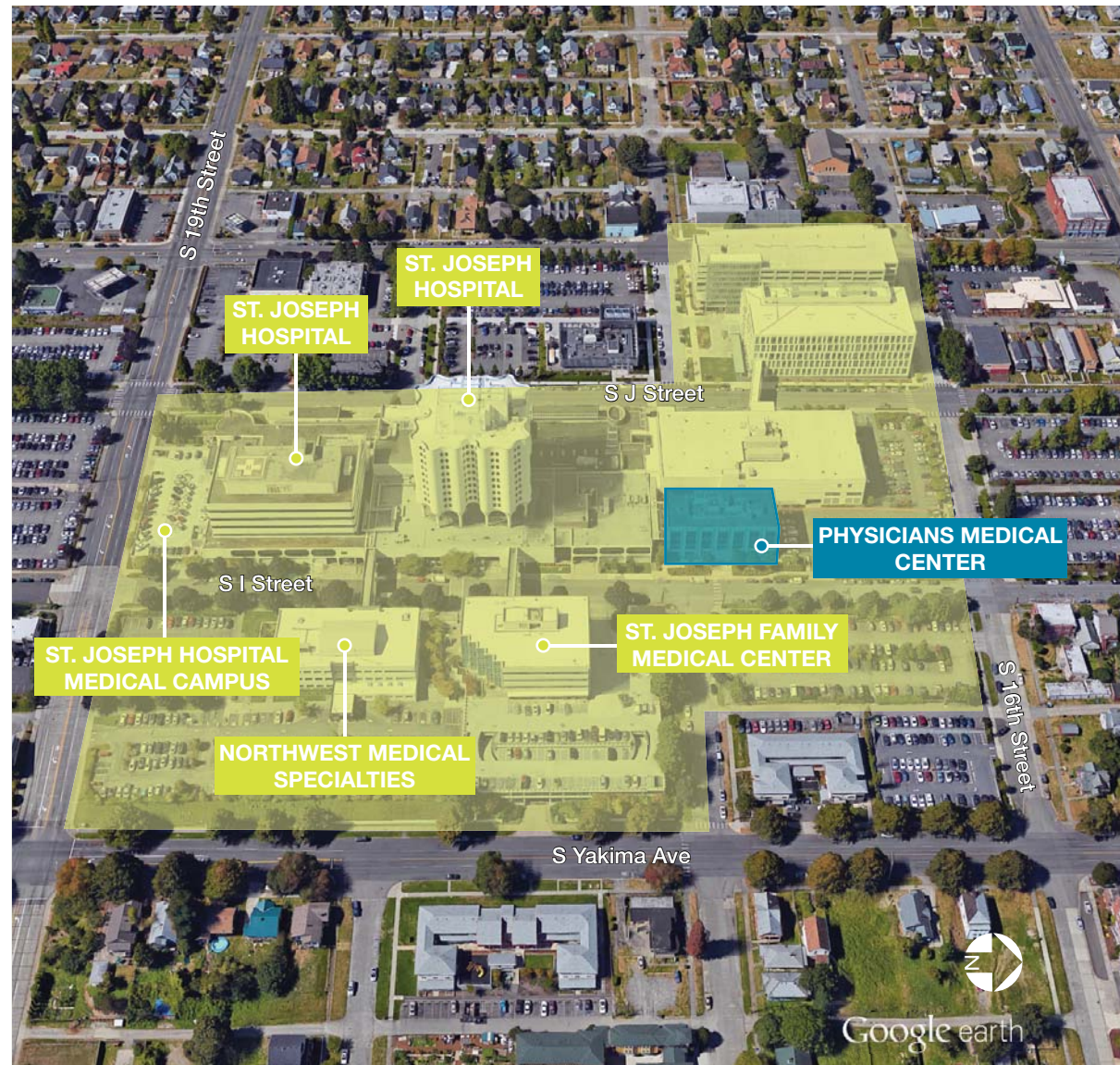
## Class "A" on Campus Medical Building

AVAILABLE	Suite 206: 1,394 SF
	"Ready to go" medical buildout
RATE	\$20 PSF, NNN
CAMPUS SETTING	On campus medical office building directly adjacent to St. Joseph Hospital
SYNERGY	Join CHI Franciscans, Northwest Medical Specialties within the campus and more
ACCESS	Easy access to and from I-5 Structural parking with immediate access to the building Hospital sized elevator
PARKING	210 parking spaces 5/1,000 RSF, structured parking and surface parking

Available

SUITE 206

1,394 SF



**Will Frame**  
253.722.1412  
wframe@kiddermathews.com

**Bill Frame, CCIM**  
253.722.1403  
bframe@kiddermathews.com

[kiddermathews.com](http://kiddermathews.com)



PHYSICIANS REALTY TRUST

**km** Kidder Mathews

This information supplied herein is from sources we deem reliable. It is provided without any representation, warranty or guarantee, expressed or implied as to its accuracy. Prospective Buyer or Tenant should conduct an independent investigation and verification of all matters deemed to be material, including, but not limited to, statements of income and expenses. Consult your attorney, accountant, or other professional advisor.



# Physicians Medical Center

1624 South I Street, Tacoma, WA



**Will Frame**  
253.722.1412  
wframe@kiddermathews.com

**Bill Frame, CCIM**  
253.722.1403  
bframe@kiddermathews.com

[kiddermathews.com](http://kiddermathews.com)



**PHYSICIANS REALTY TRUST**

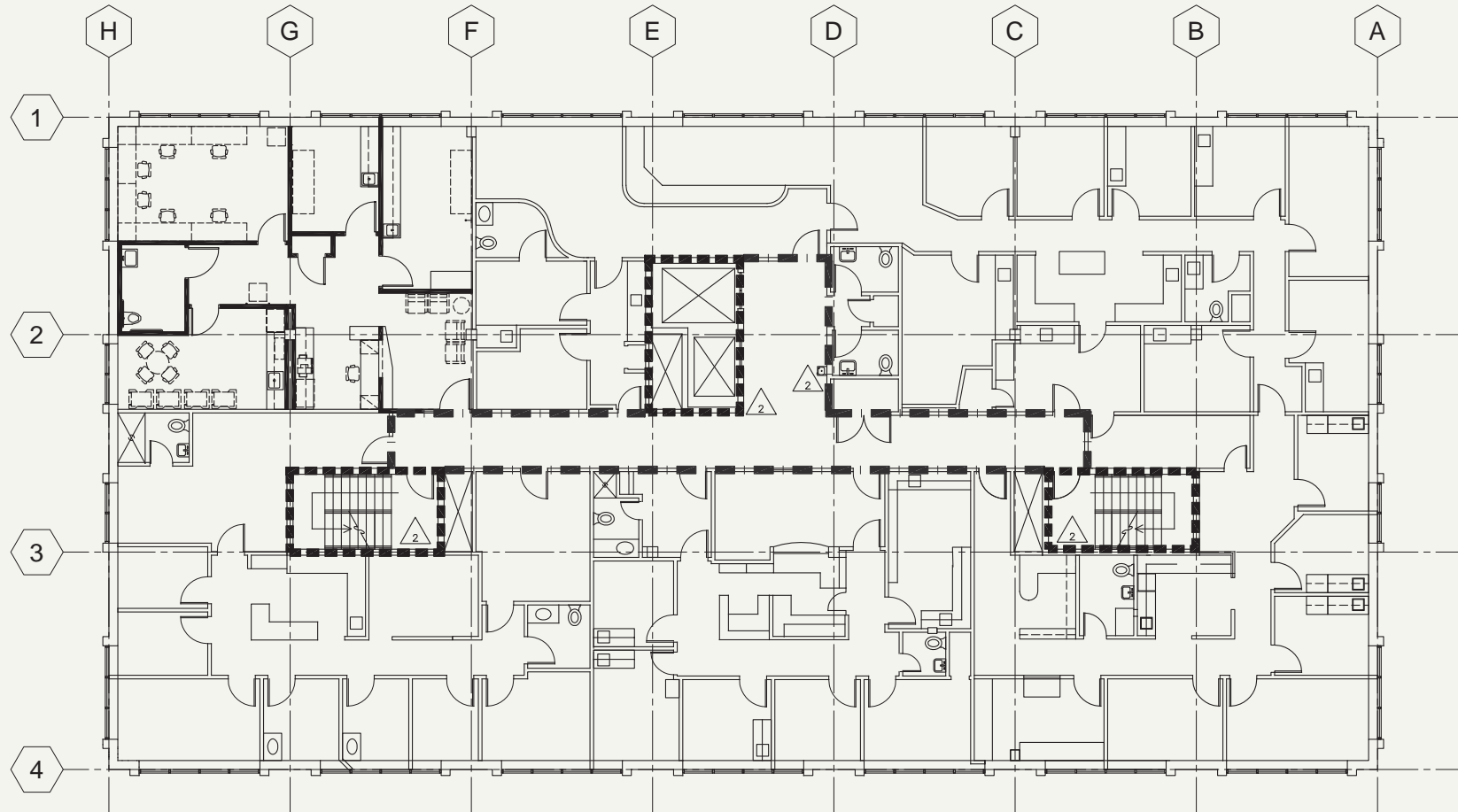
**km Kidder Mathews**

This information supplied herein is from sources we deem reliable. It is provided without any representation, warranty or guarantee, expressed or implied as to its accuracy. Prospective Buyer or Tenant should conduct an independent investigation and verification of all matters deemed to be material, including, but not limited to, statements of income and expenses. Consult your attorney, accountant, or other professional advisor.



# Physicians Medical Center

1624 South I Street, Tacoma, WA



 **2** OVERALL 2ND LEVEL FLOOR PLAN AND CODE PLAN

**Will Frame**  
253.722.1412  
wframe@kiddermathews.com

**Bill Frame, CCIM**  
253.722.1403  
bframe@kiddermathews.com

[kiddermathews.com](http://kiddermathews.com)



**PHYSICIANS REALTY TRUST**

**km** **Kidder Mathews**

This information supplied herein is from sources we deem reliable. It is provided without any representation, warranty or guarantee, expressed or implied as to its accuracy. Prospective Buyer or Tenant should conduct an independent investigation and verification of all matters deemed to be material, including, but not limited to, statements of income and expenses. Consult your attorney, accountant, or other professional advisor.

# Physicians Medical Center

1624 South I Street, Tacoma, WA



**Will Frame**  
253.722.1412  
wframe@kiddermathews.com

**Bill Frame, CCIM**  
253.722.1403  
bframe@kiddermathews.com

[kiddermathews.com](http://kiddermathews.com)



**PHYSICIANS REALTY TRUST**

**km Kidder Mathews**

This information supplied herein is from sources we deem reliable. It is provided without any representation, warranty or guarantee, expressed or implied as to its accuracy. Prospective Buyer or Tenant should conduct an independent investigation and verification of all matters deemed to be material, including, but not limited to, statements of income and expenses. Consult your attorney, accountant, or other professional advisor.