

FOR LEASE

1805 SOUTH REDWOOD ROAD

SALT LAKE CITY, UT



OFFICE SPACE

MODERN RENOVATION COMPLETED

- Approximately 4,845 SF Available (can be demised)
- Lease Rate: \$17.00-\$18.00/SF, NNN
- Lot overlooks Glendale Golf Course
- Great opportunity for single-tenant occupant
- Unique building design with 2nd floor balcony



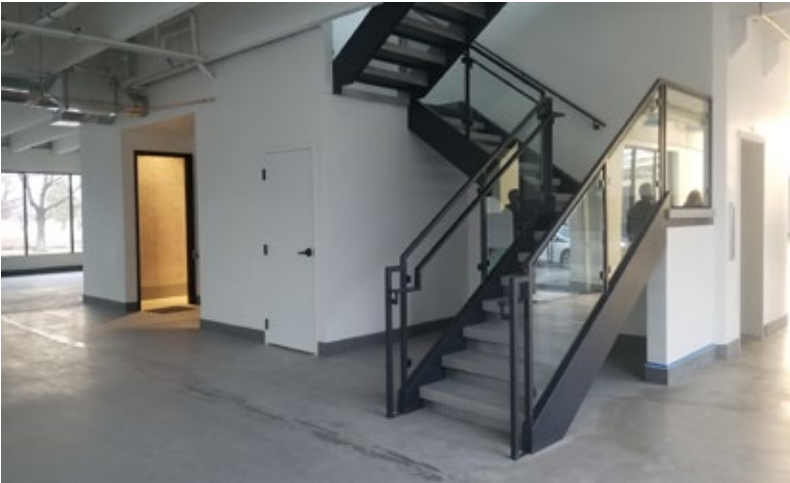
**GENEROUS TENANT
IMPROVEMENT ALLOWANCE**



AMPLE PARKING



**CONVENIENT ACCESS TO
HIGHWAY 201, I-215, & I-15**



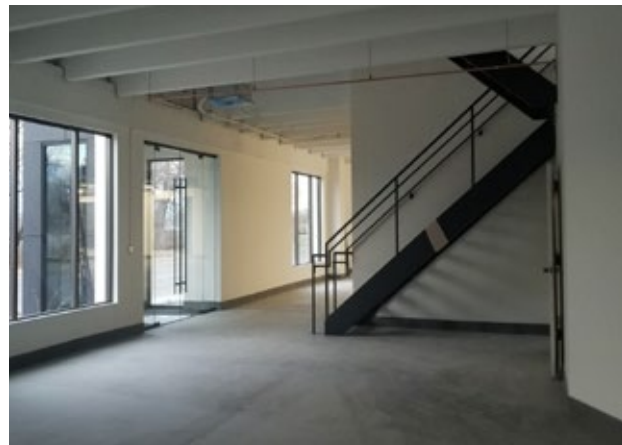
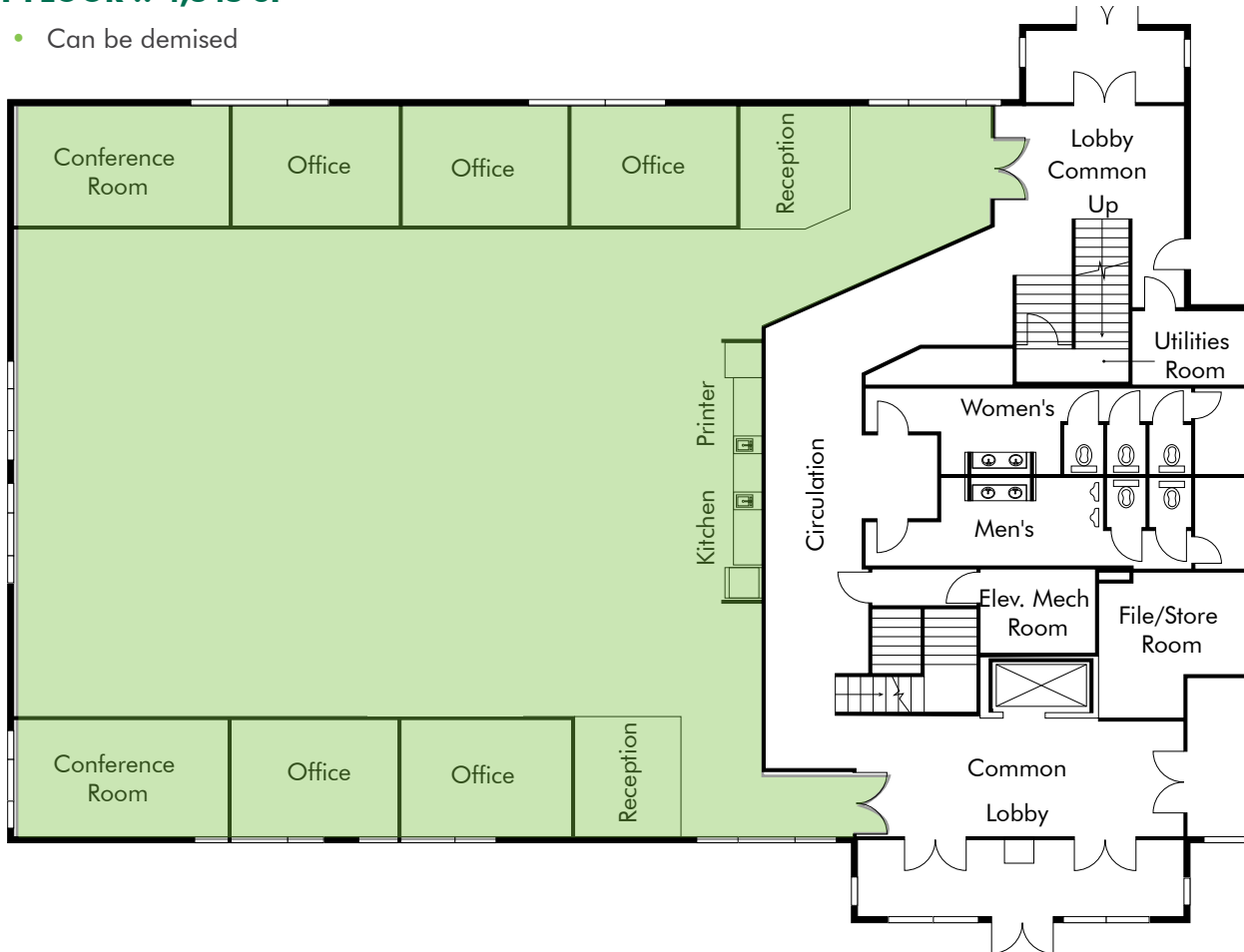
COMPLETE BUILDING RENOVATION

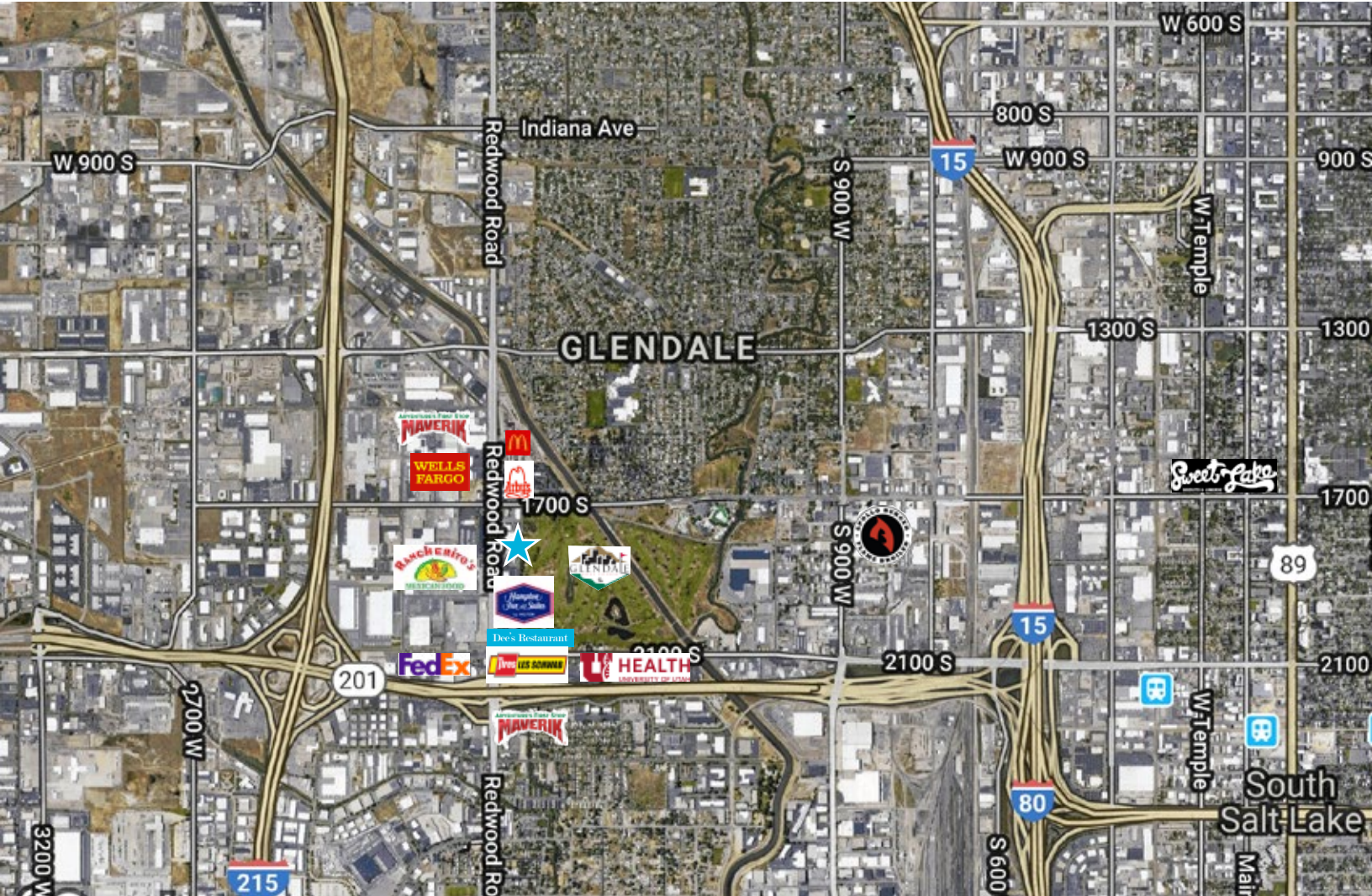
- New roof deck addition
- Refaced and updated building exterior: metal or stucco replaced stone, and concrete will be sandblasted
- New energy-efficient windows
- Redesigned entry that will be centered in relation to the building
- Re-landscaped yard
- New HVAC system
- Creative, modern design with polished concrete and raised ceilings
- Remodeled bathrooms
- Upgraded elevator
- Energy efficient, modern lighting fixtures
- New kitchenettes throughout the building
- Updated, fresh paint throughout interior

FLOOR PLANS

1ST FLOOR :: 4,845 SF

- Can be demised





CONTACT US

ERIC SMITH

Senior Vice President
 +1 801 869 8008
 eric.smith@cbre.com

KREG PETERSON

First Vice President
 +1 801 869 8092
 kreg.peterson@cbre.com

LAURIE ADAIR

Vice President
 +1 801 869 8009
 laurie.adair@cbre.com