

FOR LEASE

6,267 SF HARD CORNER INDUSTRIAL/FLEX SPACE

1701 VESTA STREET, SAN DIEGO CA 92113



GINO KALASHO **MAX JOHNSON**
Sales Associate Sales Associate
Gino@caacre.com Max@caacre.com
Lic # 02046687 Lic # 02149051

858. 360. 3000 | caacre.com

This information above was obtained from sources deemed reliable. No warranties or representations, expressed or implied, are made as to the accuracy of the information contained herein, and same is submitted subject errors, omissions, change of price, rental or other conditions, withdrawal without notice, and to any special listing conditions imposed by our principals. This information is given with the understanding that all negotiations relating to the purchase, renting or leasing of the property described herein shall be conducted through Commercial Asset Advisors.

FOR LEASE

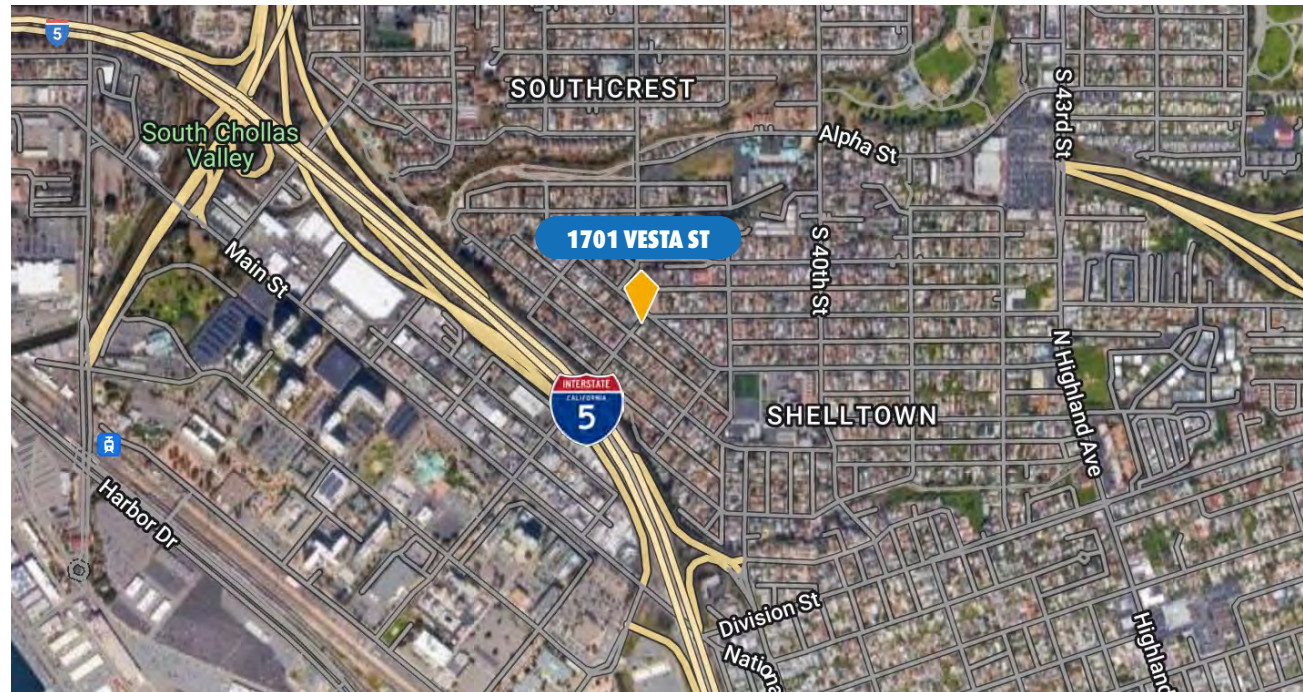
6,267 SF HARD CORNER INDUSTRIAL/FLEX SPACE

1701 VESTA STREET, SAN DIEGO CA 92113



PROPERTY OVERVIEW

- Hard-corner visibility
- Easy access to/from I-5 freeway
- Current zoning is RM-1-1, but “grandfathered” for commercial and industrial uses as legal non-conforming uses
- One grade level roll-up door with Internal loading dock
- 6,267 SF flex space that includes 500 SF of office space
- \$1.75/SF Gross + Utilities

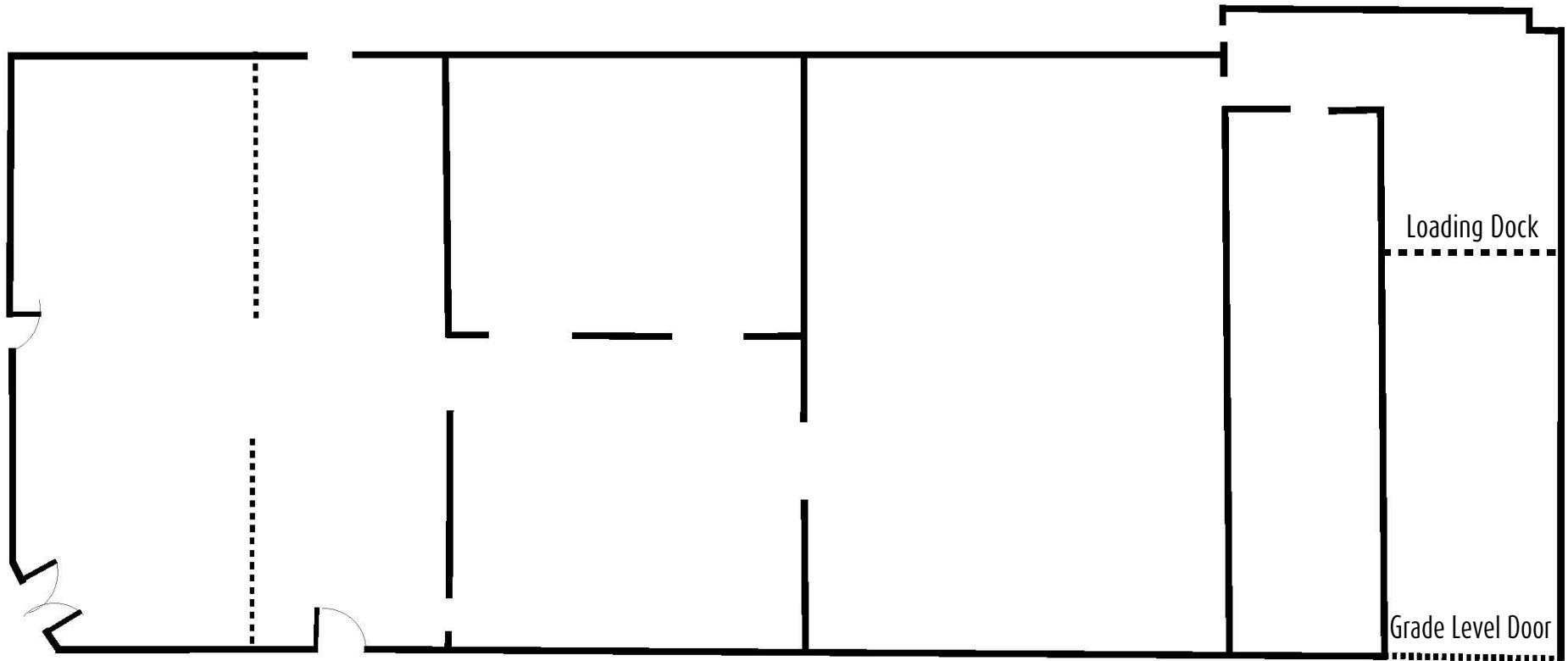


858. 360. 3000 | caacre.com

FOR LEASE

6,267 SF HARD CORNER INDUSTRIAL/FLEX SPACE

1701 VESTA STREET, SAN DIEGO CA 92113



FLOOR PLAN IS NOT TO SCALE AND IS FOR ILLUSTRATIVE PURPOSES ONLY.



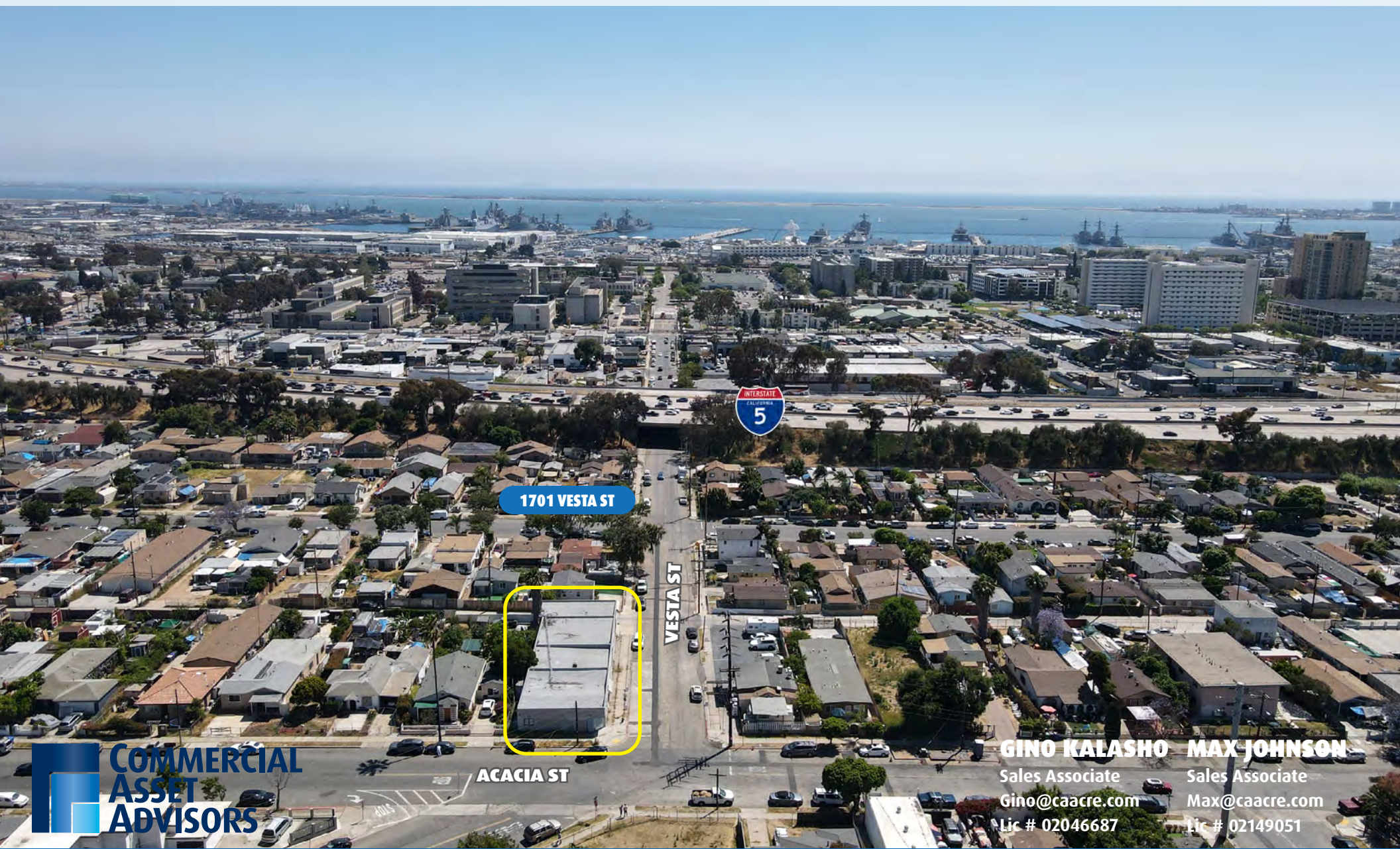
858.360.3000 | caacre.com

This information above was obtained from sources deemed reliable. No warranties or representations, expressed or implied, are made as to the accuracy of the information contained herein, and same is submitted subject to errors, omissions, change of price, rental or other conditions, withdrawal without notice, and to any special listing conditions imposed by our principals. This information is given with the understanding that all negotiations relating to the purchase, renting or leasing of the property described herein shall be conducted through Commercial Asset Advisors.

FOR LEASE

6,267 SF HARD CORNER INDUSTRIAL/FLEX SPACE

1701 VESTA STREET, SAN DIEGO CA 92113



1701 VESTA ST

VESTA ST

ACACIA ST



GINO KALASHO **MAX JOHNSON**
Sales Associate Sales Associate
Gino@caacre.com Max@caacre.com
Lic # 02046687 Lic # 02149051

858.360.3000 | caacre.com

This information was obtained from sources deemed reliable. No warranties or representations, expressed or implied, are made as to the accuracy of the information contained herein, and same is submitted subject to errors, omissions, change of price, rental or other conditions, withdrawal without notice, and to any special listing conditions imposed by our principals. This information is to be used with the understanding that all negotiations relating to the purchase, rental or leasing of the property described herein shall be conducted through Commercial Asset Advisors.

FOR LEASE

6,267 SF HARD CORNER INDUSTRIAL/FLEX SPACE

1701 VESTA STREET, SAN DIEGO CA 92113



DEMOGRAPHICS SUMMARY

Radius	1 Mile	2 Mile	10 Mile
Population			
2028 Projection	37,053	111,260	1,389,908
2023 Estimate	37,879	113,868	1,407,521
2010 Census	38,284	114,811	1,334,001
Growth 2023 - 2028	-2.18%	-2.29%	-1.25%
Growth 2010 - 2023	-1.06%	-0.82%	5.51%
2023 Population by Hispanic Origin			
2023 Population	37,879	113,868	1,407,521
White	29,203 77.10%	83,088 72.97%	1,003,576 71.30%
Black	4,190 11.06%	12,782 11.23%	120,548 8.56%
Am. Indian & Alaskan	680 1.80%	2,103 1.85%	18,927 1.34%
Asian	2,316 6.11%	11,214 9.85%	184,282 13.09%
Hawaiian & Pacific Island	230 0.61%	893 0.78%	10,231 0.73%
Other	1,261 3.33%	3,789 3.33%	69,956 4.97%
U.S. Armed Forces	6,375	10,948	39,972
Households			
2028 Projection	7,368	25,518	490,443
2023 Estimate	7,597	26,263	496,427
2010 Census	7,900	27,099	468,084
Growth 2023 - 2028	-3.01%	-2.84%	-1.21%
Growth 2010 - 2023	-3.84%	-3.08%	6.06%
Owner Occupied	2,411 31.74%	8,055 30.67%	226,290 45.58%
Renter Occupied	5,187 68.28%	18,209 69.33%	270,137 54.42%
2023 Households by HH Income			
Income: <\$25,000	1,610 21.19%	6,207 23.63%	74,605 15.03%
Income: \$25,000 - \$50,000	2,327 30.63%	7,463 28.42%	86,370 17.40%
Income: \$50,000 - \$75,000	1,418 18.66%	4,986 18.98%	80,340 16.18%
Income: \$75,000 - \$100,000	1,072 14.11%	3,380 12.87%	67,559 13.61%
Income: \$100,000 - \$125,000	415 5.46%	1,431 5.45%	55,757 11.23%
Income: \$125,000 - \$150,000	347 4.57%	1,277 4.86%	40,037 8.07%
Income: \$150,000 - \$200,000	234 3.08%	715 2.72%	43,335 8.73%
Income: \$200,000+	175 2.30%	804 3.06%	48,423 9.75%
2023 Avg Household Income	\$63,334	\$63,924	\$99,847
2023 Med Household Income	\$48,135	\$47,796	\$77,552



858.360.3000 | caacre.com