



4975 Choctaw Dr

Baton Rouge, Louisiana 70805

Property Highlights

- ±2.3 Acres
- Hard Corner at Choctaw Dr & N Foster Dr
- ±18,000 ADTV (Average Daily Traffic Volume)
- Industrial or Retail Use

Sale Price

\$5.00 / SF



For more information

Michael Cashio, CCIM

O: 225 295 0800 | C: 225 247 9812
mcashio@latterblum.com

Hartley Daigle, CCIM

O: 225 297 7870 | C: 225 610 0821
hcdaigle@latterblum.com

Alex McCollam

O: 225 295 0800 | C: 832 584 9162
alexm@latterblum.com

CALL OR EMAIL FOR MORE INFORMATION

NO WARRANTY OR REPRESENTATION, EXPRESS OR IMPLIED, IS MADE AS TO THE ACCURACY OF THE INFORMATION CONTAINED HEREIN, AND THE SAME IS SUBMITTED SUBJECT TO ERRORS, OMISSIONS, CHANGE OF PRICE, RENTAL OR OTHER CONDITIONS, PRIOR SALE, LEASE OR FINANCING, OR WITHDRAWAL WITHOUT NOTICE, AND OF ANY SPECIAL LISTING CONDITIONS IMPOSED BY OUR PRINCIPALS NO WARRANTIES OR REPRESENTATIONS ARE MADE AS TO THE CONDITION OF THE PROPERTY OR ANY HAZARDS CONTAINED THEREIN ARE ANY TO BE IMPLIED. LICENSED IN LOUISIANA.

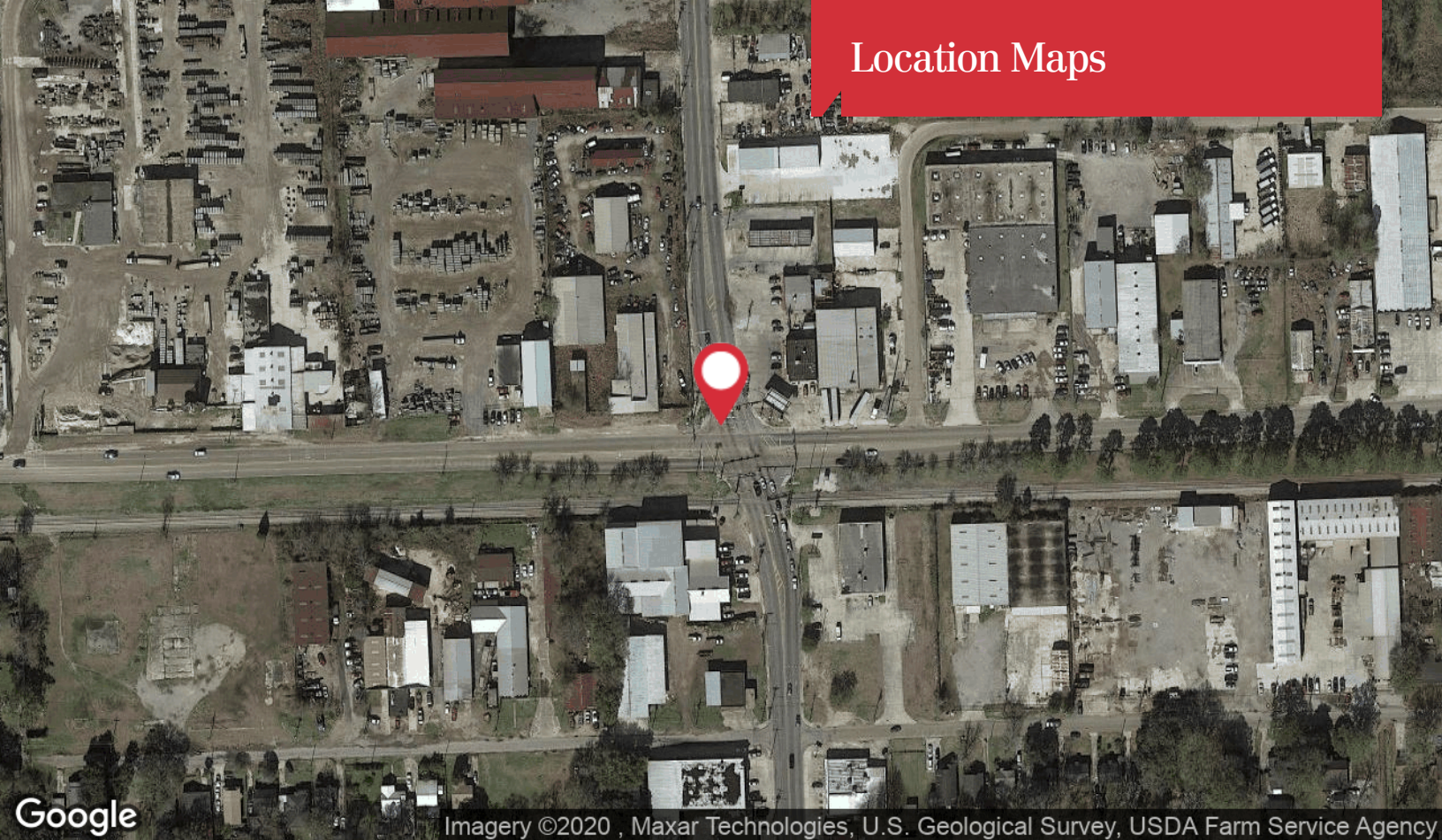
1700 City Farm Drive
Baton Rouge, LA 70806
225 295 0800 tel
latterblum.com



Additional Photos



Location Maps



Imagery ©2020 , Maxar Technologies, U.S. Geological Survey, USDA Farm Service Agency



1700 City Farm Drive
Baton Rouge, LA 70806
225 295 0800 tel
latterblum.com