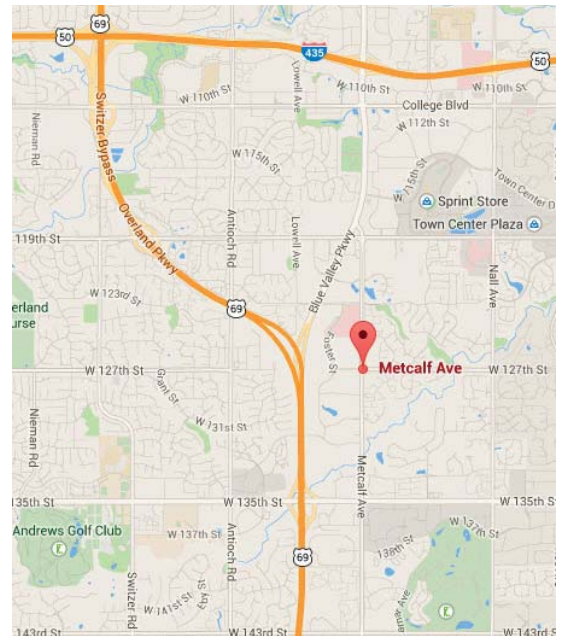




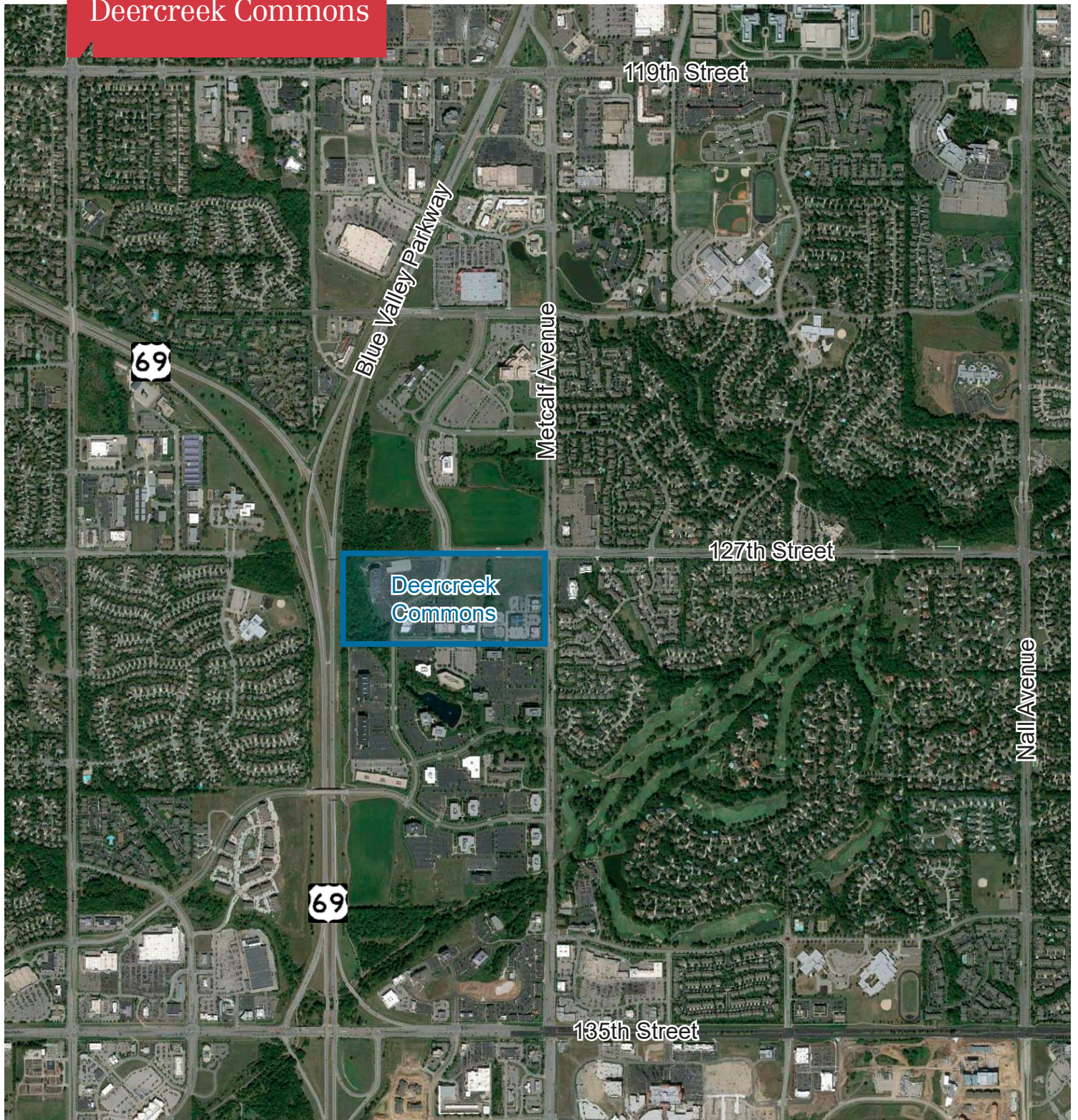
- Development land for sale
- Office
- Retail
- Medical
- Lot 3 | 5.65 Acres
- Lot 4a | Under Contract
- Lot 4b | 1.28 Acres
- Lot 6 | 4.89 Acres
- Contact agent for pricing

+1 913 956 5805
carl@nai-heartland.com



4400 College Boulevard, Suite 170
Overland Park, KS 66211
+1 913 362 1000
nai-heartland.com

Overland Park, Kansas
Deercreek Commons



4400 College Boulevard, Suite 170
Overland Park, KS 66211
+1 913 362 1000
nai-heartland.com