



# Downtown Offices with Views Available

Title & Trust Building, 321 SW 4th, Portland, OR 97204



## Available:

Suite 301: 249 SF

Suite 302: 932 SF

Suite 303: 358 SF

Suite 304: 495 SF

Some suites may be combined

**Rate: \$17.50/SF Full Service**

## Building features include:

- Historic building with modern upgrades
- Updated building systems
- Updated lobby, restrooms & elevator
- Sinks available in most units
- Operable windows, natural light
- Storage available
- Bike parking and showers

## CONTACT:

**Will Wright**

[will@venerableproperties.com](mailto:will@venerableproperties.com)

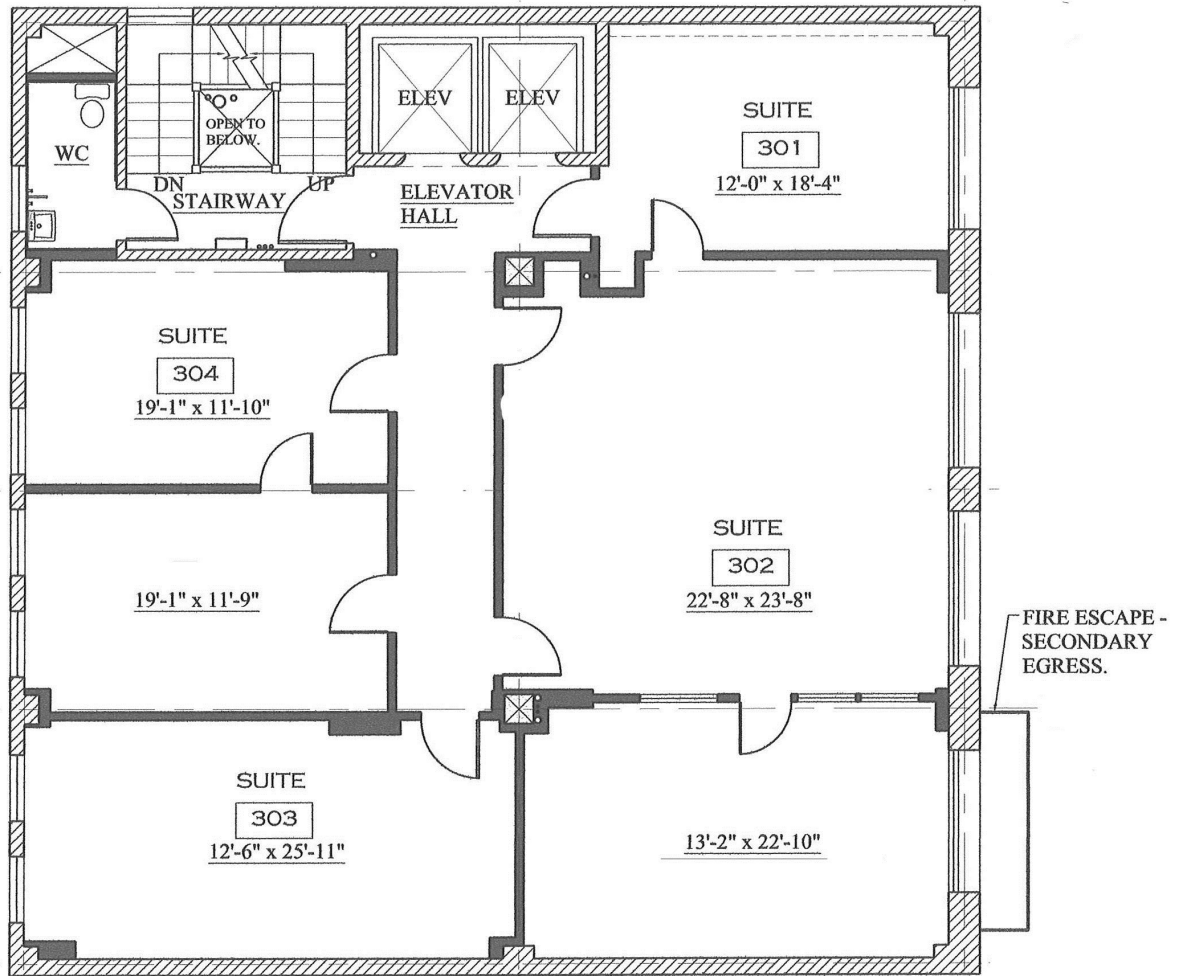
**Carolyn Pantier**

[carolyn@venerableproperties.com](mailto:carolyn@venerableproperties.com)

[www.venerableproperties.com](http://www.venerableproperties.com)

Call 503-224-2446





*Suites offer large, operable windows and some of the units feature wonderful downtown views.*



*Updated storefront entry system and light fixtures, remodeled lobby with stone and mosaic tiles floor.*