



## 2251 Drusilla Lane

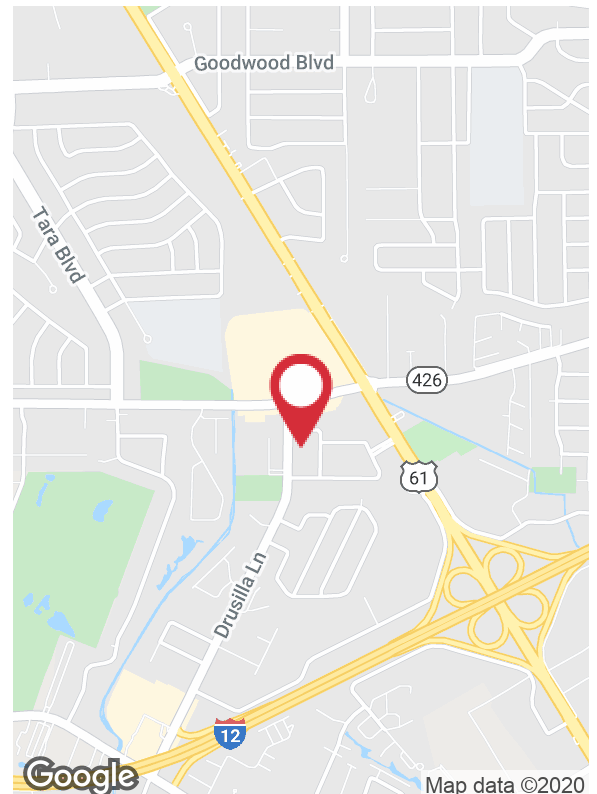
Baton Rouge, Louisiana 70809

### Property Highlights

- 1,336 Square foot Office Condo
- First floor has 3 offices, a reception area, and a kitchenette. The second floor has 300 extra SF of office space or storage.
- Great location with easy access to I-12, Airline Highway, and Jefferson.

### Sale Price

\$100,000



For more information

**Austin Bain**

O: 225 295 0800 | C: 225 978 9966  
austinbain@latterblum.com

CALL OR EMAIL FOR MORE INFORMATION

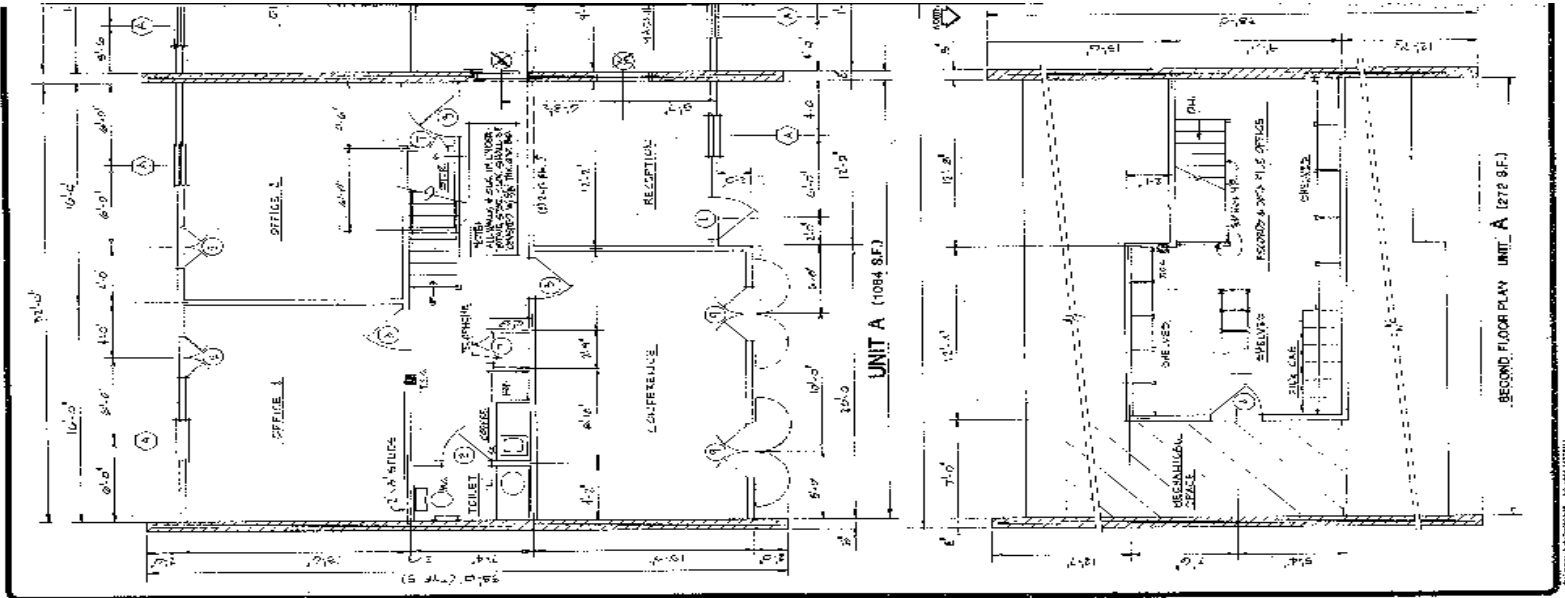
NO WARRANTY OR REPRESENTATION, EXPRESS OR IMPLIED, IS MADE AS TO THE ACCURACY OF THE INFORMATION CONTAINED HEREIN, AND THE SAME IS SUBMITTED SUBJECT TO ERRORS, OMISSIONS, CHANGE OF PRICE, RENTAL OR OTHER CONDITIONS, PRIOR SALE, LEASE OR FINANCING, OR WITHDRAWAL WITHOUT NOTICE, AND OF ANY SPECIAL LISTING CONDITIONS IMPOSED BY OUR PRINCIPALS NO WARRANTIES OR REPRESENTATIONS ARE MADE AS TO THE CONDITION OF THE PROPERTY OR ANY HAZARDS CONTAINED THEREIN ARE ANY TO BE IMPLIED. LICENSED IN LOUISIANA.

1700 City Farm Drive  
Baton Rouge, LA 70806  
225 295 0800 tel  
**latterblum.com**

February 27, 2020

## Additional Photos







## Location Maps

