

FOR LEASE | SUITE 102 • FIRST FLOOR 1,996 RSF

AMENITIES & HIGHLIGHTS

- Ideal for Dental Office
- Beautiful Layout
- Within Walking Distance to St. Joseph Hospital & CHOC
- Ample Open and Free Parking
- Professionally Managed
- Unique Architecture and Design
- Elevator Served
- Excellent Freeway Access to the 22, 55, 57 & 5 Freeways

SPECIFICATIONS

| | |
|------------------------|------------|
| Total Space Available: | 1,996 SF |
| Rental Rate: | \$2.65 NNN |
| Property Type: | Office |
| Building Size: | 24,252 SF |
| Year Built: | 2003 |
| Load: | 7.8% |

CONTACT:

Eileen Doody

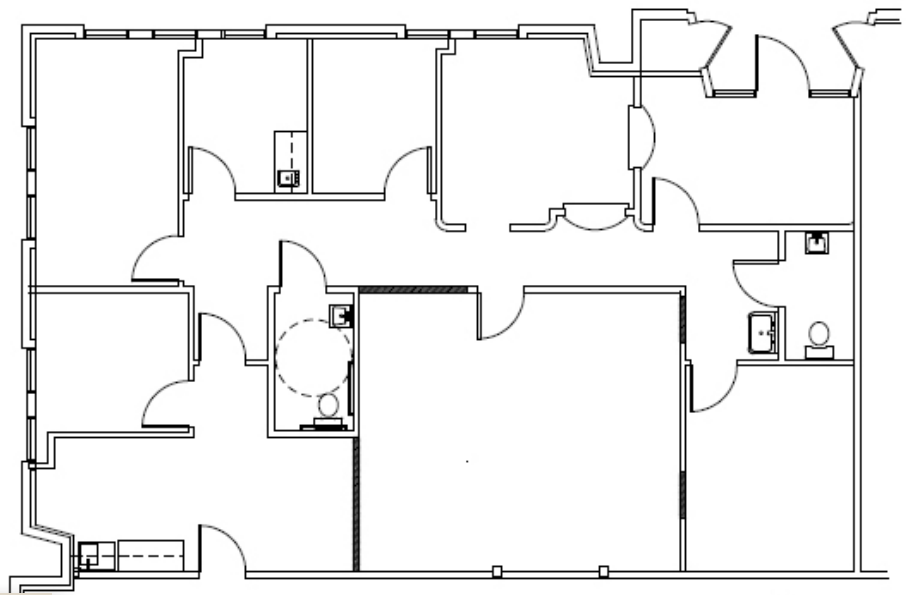
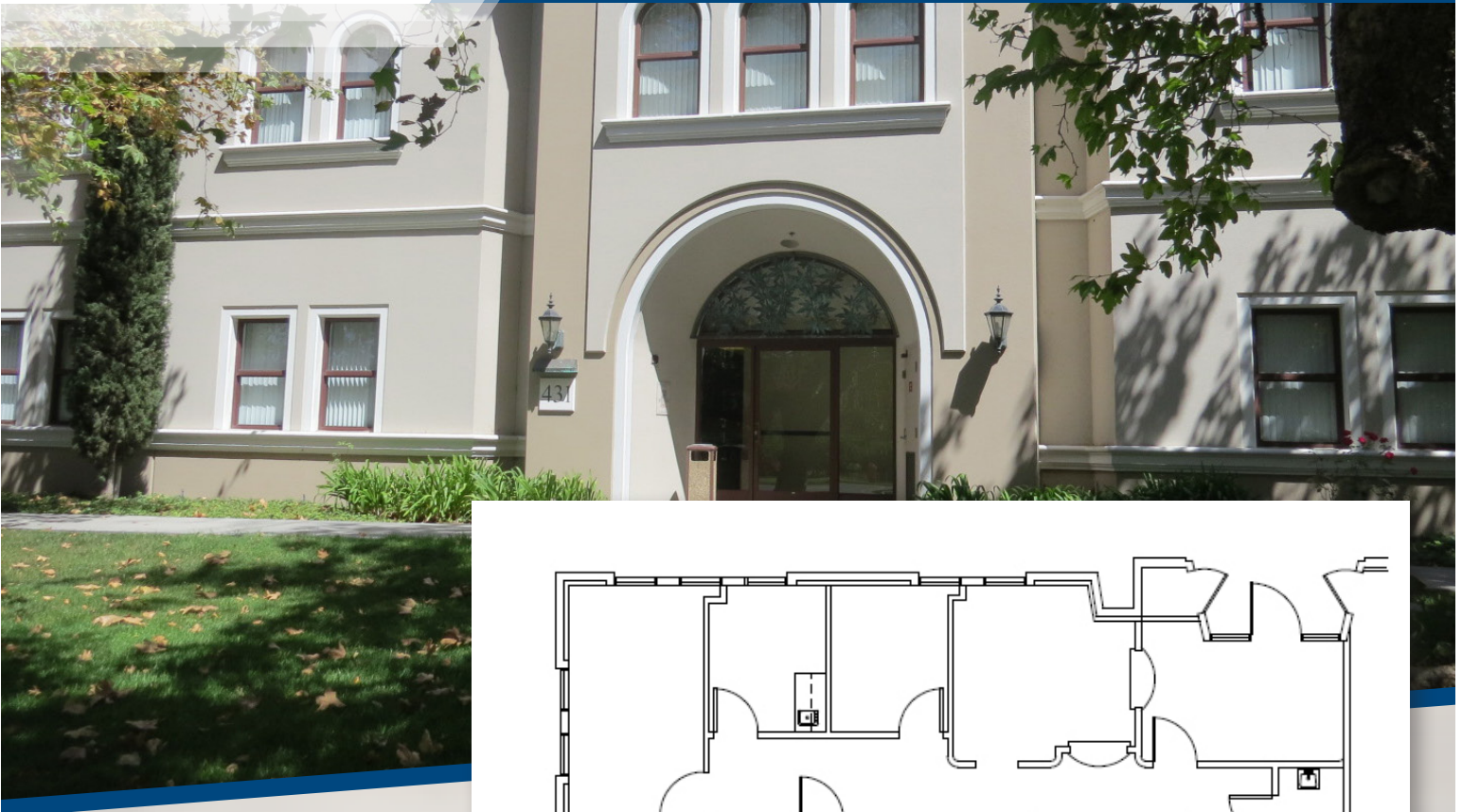
Senior Vice President Healthcare Services
949.390.5506 | edoody@pmrg.com
CalBRE 00965140

The information contained herein has been gathered from sources deemed reliable. Though we have no reason to doubt the accuracy, we do not guarantee it.

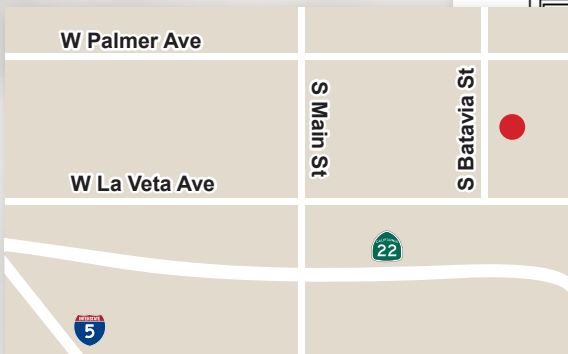
PMRG

TRICO SYCAMORE PLAZA

431 SOUTH BATAVIA | ORANGE, CA 92868



SUITE 102 - FIRST FLOOR - 1,996 RSF



The information contained herein has been gathered from sources deemed reliable. Though we have no reason to doubt the accuracy, we do not guarantee it.

CONTACT:

Eileen Doody

Senior Vice President Healthcare Services

949.390.5506 | edoody@pmrg.com

CalBRE 00965140

2020 Main Street | Suite 800 | Irvine, CA 92614 | P. 949.390.5500 | F. 949.390.5501 |

www.pmrg.com | CalBRE 01522492