



AVAILABLE FOR LEASE



AIRPORT INDUSTRIAL PARK

5550-B Airport Blvd. Tampa, FL 33634

20,221 SF | BUILDING #4



PROPERTY FEATURES

- Includes +/- 2,359 SF of Office
- Includes +/- 17,862 SF of Warehouse
- 7 (10' x 10') Dock High Doors
- 1 (10' x 14') Dock High Door with Ramp
- Clear Height: 18'
- Electrical: 3 Phase / 200 Amp
- Truck Court: 159'
- End Unit
- Sprinklered Building
- Internet Available through Spectrum or Frontier

LOCATION HIGHLIGHTS

- Immediate access to the Veterans Expressway and I-275
- Across from Tampa International Airport
- Located on Hillsborough Avenue

JESSICA MIZRAHI
 Director
 +1 813 204 5323
 jessica.mizrahi@cushwake.com

LISA ROSS, SIOR
 Senior Director
 +1 813 424 3211
 lisa.ross@cushwake.com

One Tampa City Center, Suite 3300
 Tampa, FL 33602
 Main +1 813 223 6300
 cushmanwakefield.com

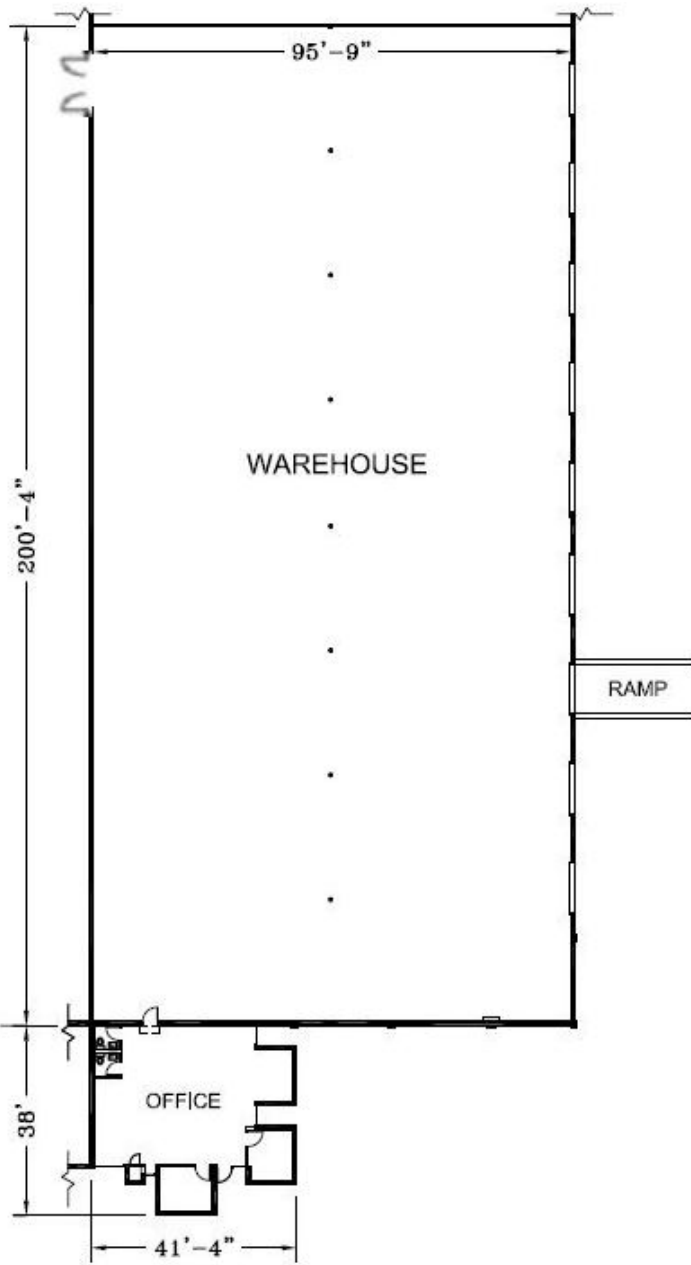
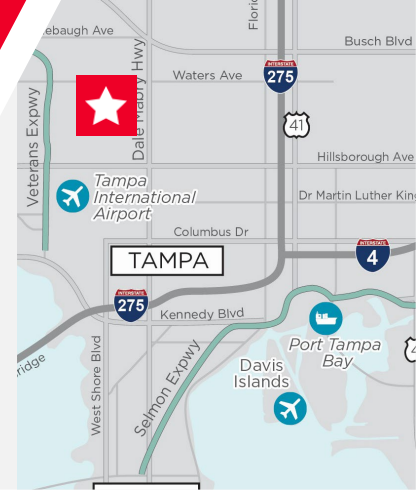


©2020 Cushman & Wakefield. All rights reserved. The information contained in this communication is strictly confidential. This information has been obtained from sources believed to be reliable but has not been verified. No warranty or representation, express or implied, is made as to the condition of the property (or properties) referenced herein or as to the accuracy or completeness of the information contained herein, and same is submitted subject to errors, omissions, change of price, rental or other conditions, withdrawal without notice, and to any special listing conditions imposed by the property owner(s). Any projections, opinions or estimates are subject to uncertainty and do not signify current or future property performance.

AIRPORT INDUSTRIAL PARK

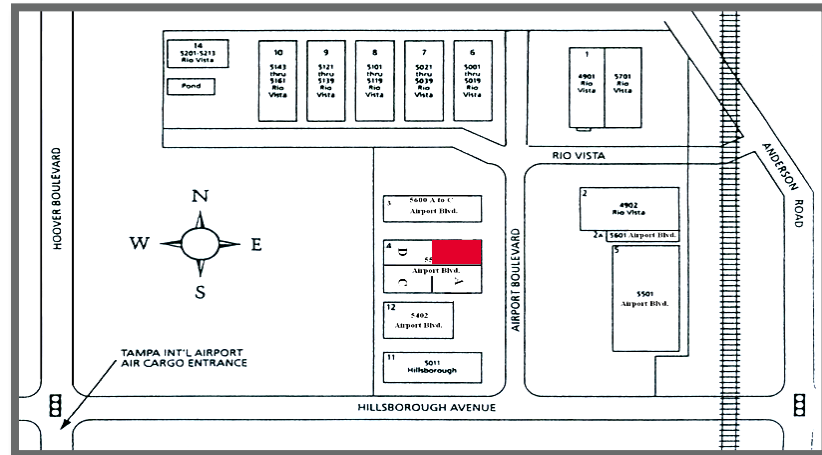
5550-B Airport Blvd. Tampa, FL 33634

20,221 SF | BUILDING #4



LOADING:

- 7 (10' x 10') Dock High Doors
- 1 (10' x 14') Door w/ Ramp



JESSICA MIZRAHI
 Director
 +1 813 204 5323
 jessica.mizrahi@cushwake.com

LISA ROSS, SIOR
 Senior Director
 +1 813 424 3211
 lisa.ross@cushwake.com

One Tampa City Center, Suite 3300
 Tampa, FL 33602
 Main +1 813 223 6300
 cushmanwakefield.com