

NW Tampa - Citrus Park Alloway St. & Alema St. Tampa, FL 33625



Access from Ehrlich Rd., via Basswood Rd.

Bordered to the west by the Upper Tampa Bay Trail

Zoned for Retail/Office/multi-family

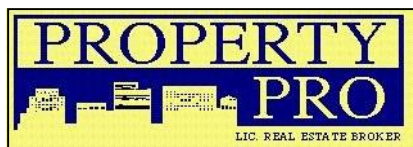
Survey and prior site plan for 33 town homes available.

Traffic: 22,000 VPD - Gunn/Ehrlich

FOR SALE
1.50 Acres
(MOL)

2016 Demographics

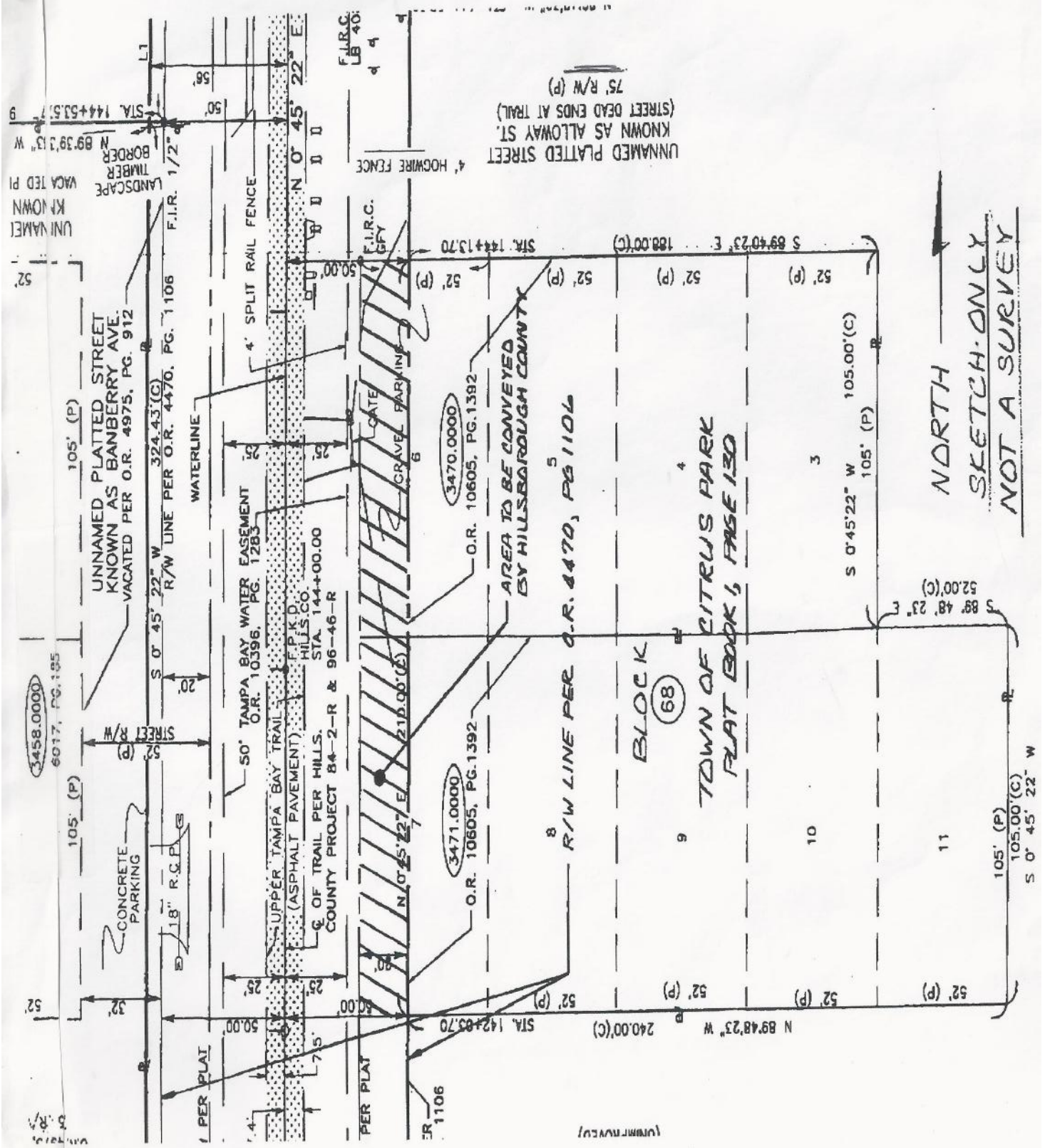
	<u>3 Miles</u>	<u>5 Miles</u>	<u>7 Miles</u>
Population	61,514	186,406	315,079
Average HH Income	\$88,889	\$90,473	\$87,184
Households	23,682	74,232	127,117
Employees	4,216	17,200	56,284



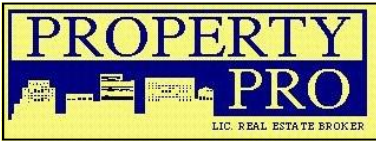
332 South Plant Ave.
Tampa, FL 33606
(813) 835-7747 Phone
www.propertypro.com

CONTACT:
Myra Croft, Licensed Real Estate Associate
E-mail: Myra@PropertyPro.com

SURVEY



NORTH →
 SKETCH ONLY
 NOT A SURVEY



Alloway St. & Alema St.
Tampa, FL 33625