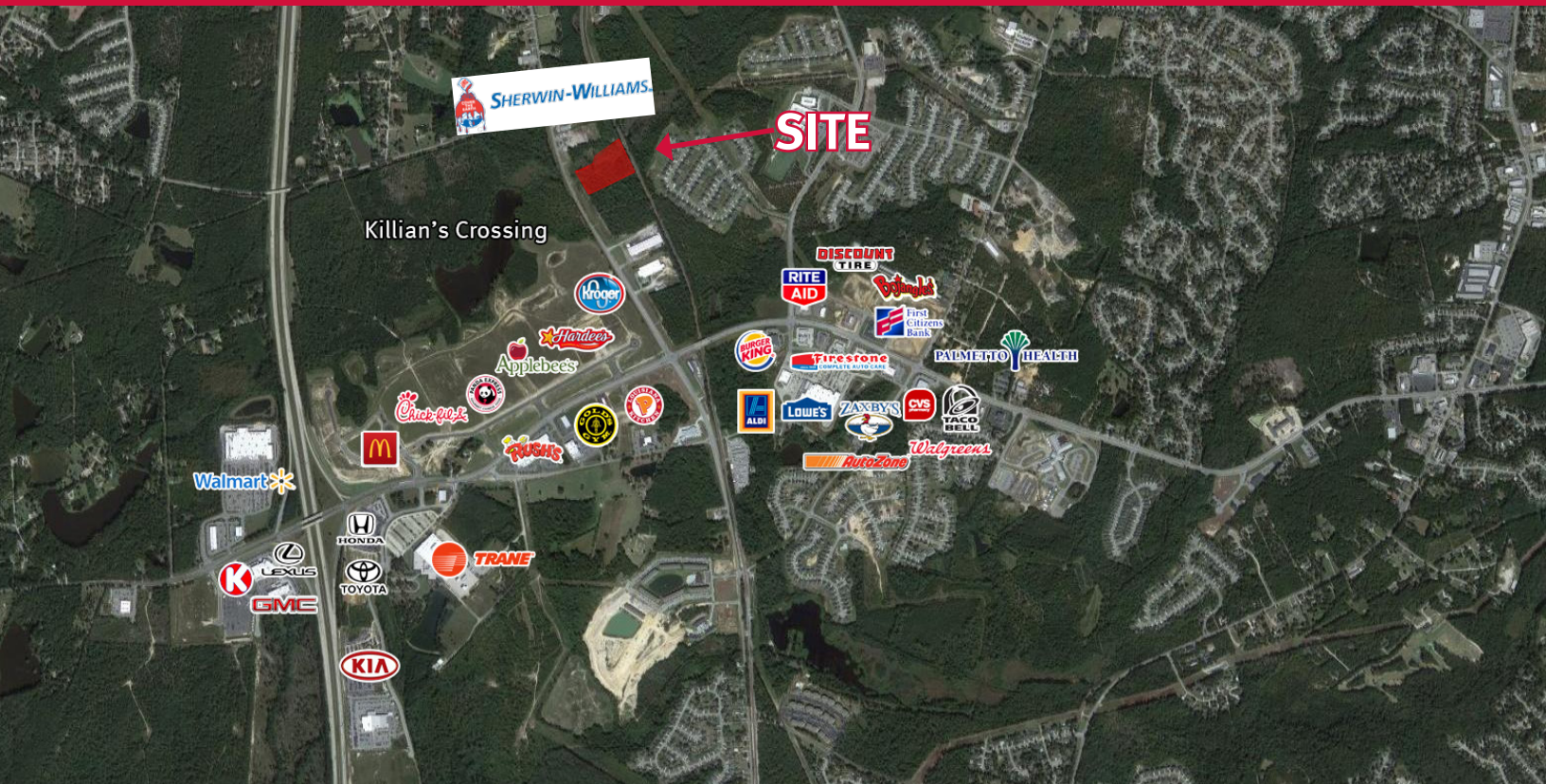


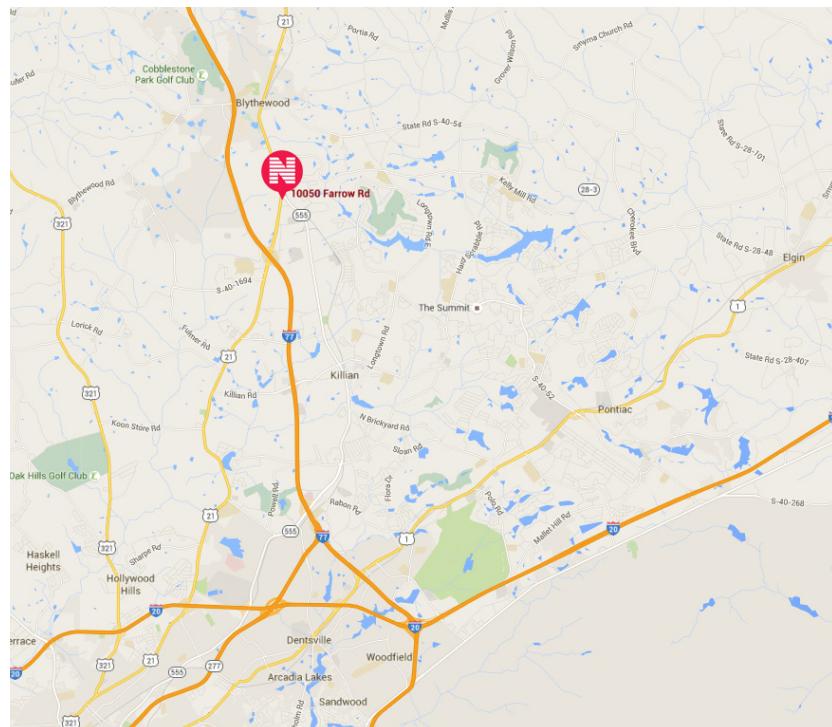
# 10050 FARROW RD

Blythewood, South Carolina



## FOR SALE

- ◆ 7 Acres available
- ◆ Located across from the new Killian's Crossing Development
- ◆ Easy access to Interstate 77
- ◆ Located in an area of rapid growth
- ◆ Zoning: HI
- ◆ **SALES PRICE: \$625,000**  
**\$485,000**  
**\$465,000**  
**\$445,000**



**Newmark**  
**Wilson Kibler**

1111 Laurel Street, Columbia, SC 29201 T 803.779.8600 [www.wilsonkibler.com](http://www.wilsonkibler.com)

**John T. Metts**

803.255.8631 [john.metts@wilsonkibler.com](mailto:john.metts@wilsonkibler.com)

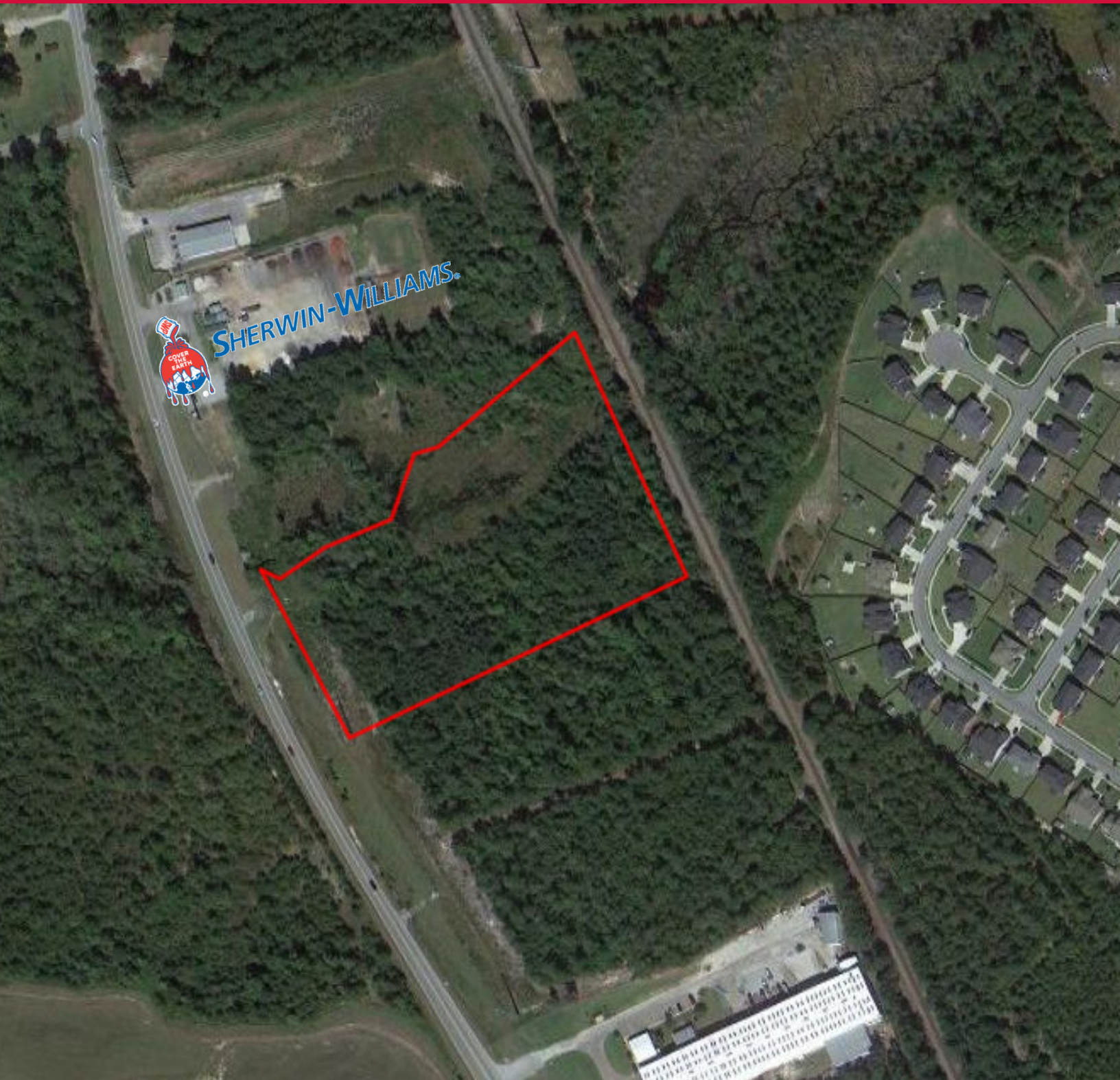
**George McCutchen, CCIM, SIOR**

803.255.8603 [gmccutchen@wilsonkibler.com](mailto:gmccutchen@wilsonkibler.com)



# 10050 FARROW RD

Blythewood, South Carolina



**Newmark**  
**Wilson Kibler**

1111 Laurel Street, Columbia, SC 29201 T 803.779.8600 [www.wilsonkibler.com](http://www.wilsonkibler.com)

**John T. Metts**  
803.255.8631 [john.metts@wilsonkibler.com](mailto:john.metts@wilsonkibler.com)

**George McCutchen, CCIM, SIOR**  
803.255.8603 [gmcutchen@wilsonkibler.com](mailto:gmcutchen@wilsonkibler.com)

The information contained herein has been obtained from sources we believe to be reliable; however, Newmark Grubb Wilson Kibler has not conducted any investigation regarding these matters and makes no warranty or representation whatsoever regarding the accuracy or completeness of the information provided. Independently owned and operated.