



# METRO EXECUTIVE TERRACE

8400 CORPORATE DRIVE | LANDOVER, MD 20785



**Kenneth E. Fellows**  
301.222.0210  
kfellows@edgecre.com

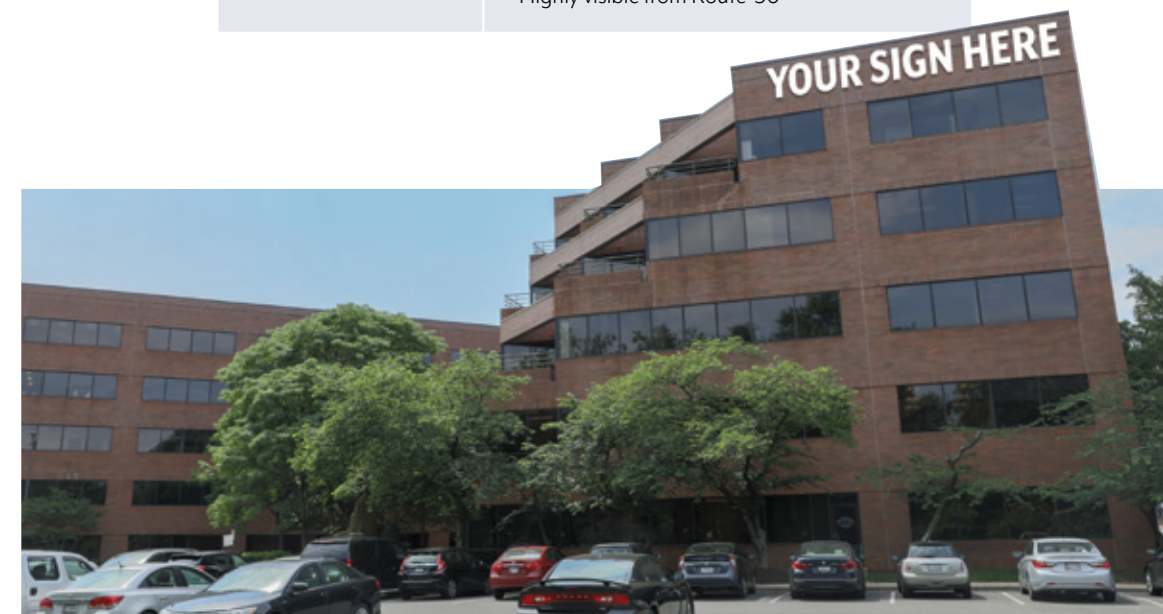
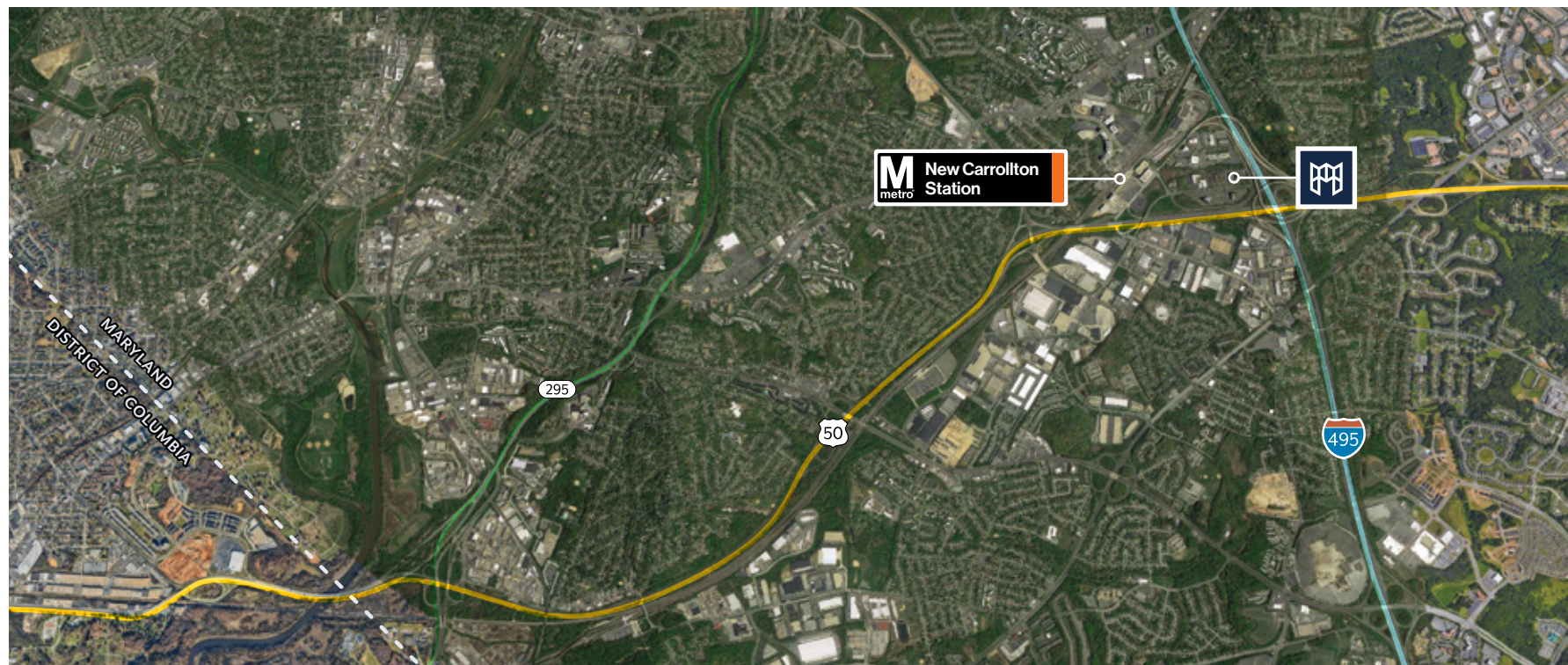
**Robert E. Pugh**  
301.222.0211  
rpugh@edgecre.com

# Just In the Backyard of D.C.



## Building Info

<b>Address</b>	8400 Corporate Drive Landover, MD 20785
<b>Year Built</b>	1985
<b>Class</b>	A
<b>Site Area</b>	7.13 acres
<b>Total Building Size</b>	149,170 SF
<b>Number of Floors</b>	5 stories
<b>Parking</b>	530 free Surface Spaces are available; Ratio of 3.20/1,000 SF Additional parking available
<b>Amenities</b>	Avenue C - Self-serving micro-market Fitness center - On-site, tenant-only Atrium - Available for lunch and events Shared Conference Facility Free Shuttle to New Carrollton Metro Station
<b>Highlights</b>	Local, well established ownership Spec suites available New common area finishes Monument & exterior signage opportunity Highly visible from Route-50



ATRIUM



FITNESS CENTER



CONFERENCE / AVENUE C



# Amenities Inside Out

METRO EXECUTIVE TERRACE



AROUND THE NEIGHBORHOOD

### RESTAURANT

- 1. Subway
- 2. Taco Bell
- 3. Domino's Pizza
- 4. Popeyes
- 5. KFC
- 6. Wendy's
- 7. Bojangles'
- 8. IHOP
- 9. Red Lobster
- 10. McDonald's
- 11. Just Jerk
- 12. Pizza Hut
- 13. Teppanyaki Grill
- 14. Taco Bell
- 15. America's Best Wings

### HOSPITALITY

- 1. Courtyard by Marriott
- 2. Best Western
- 3. Red Roof Inn

### FITNESS

- 1. Total Soccer Arena
- 2. Retro Fitness

### RETAIL

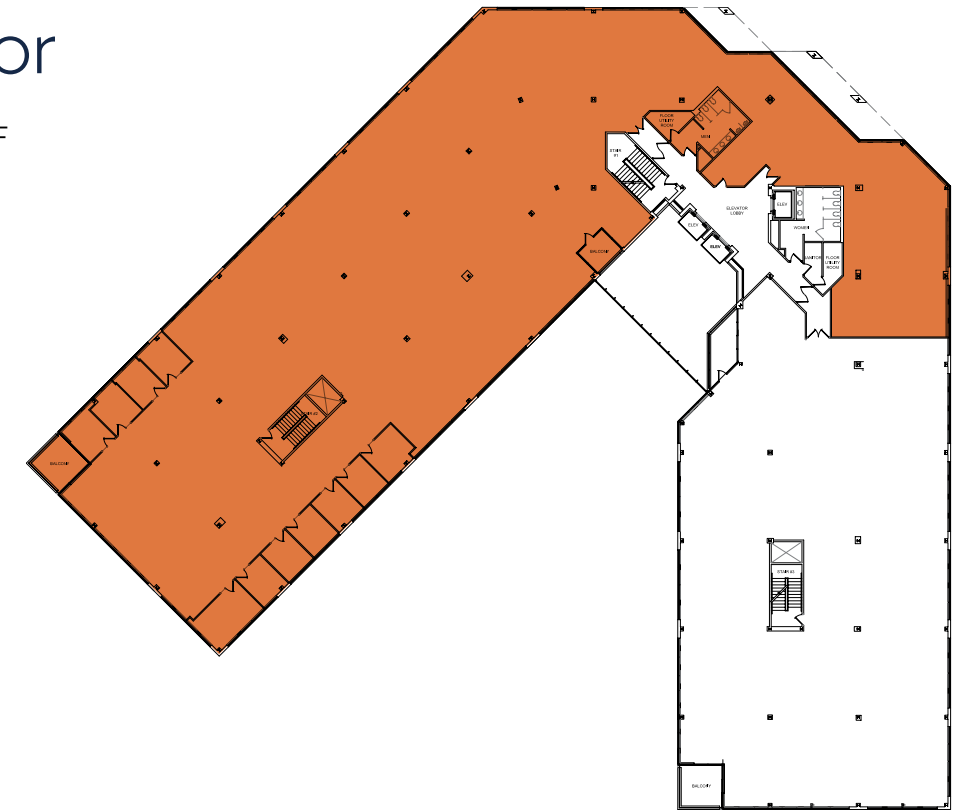
- 1. Giant Food
- 2. CVS
- 3. Giant Food
- 4. 7-Eleven
- 5. Staples
- 6. Lowe's
- 7. 7-Eleven

# Availability



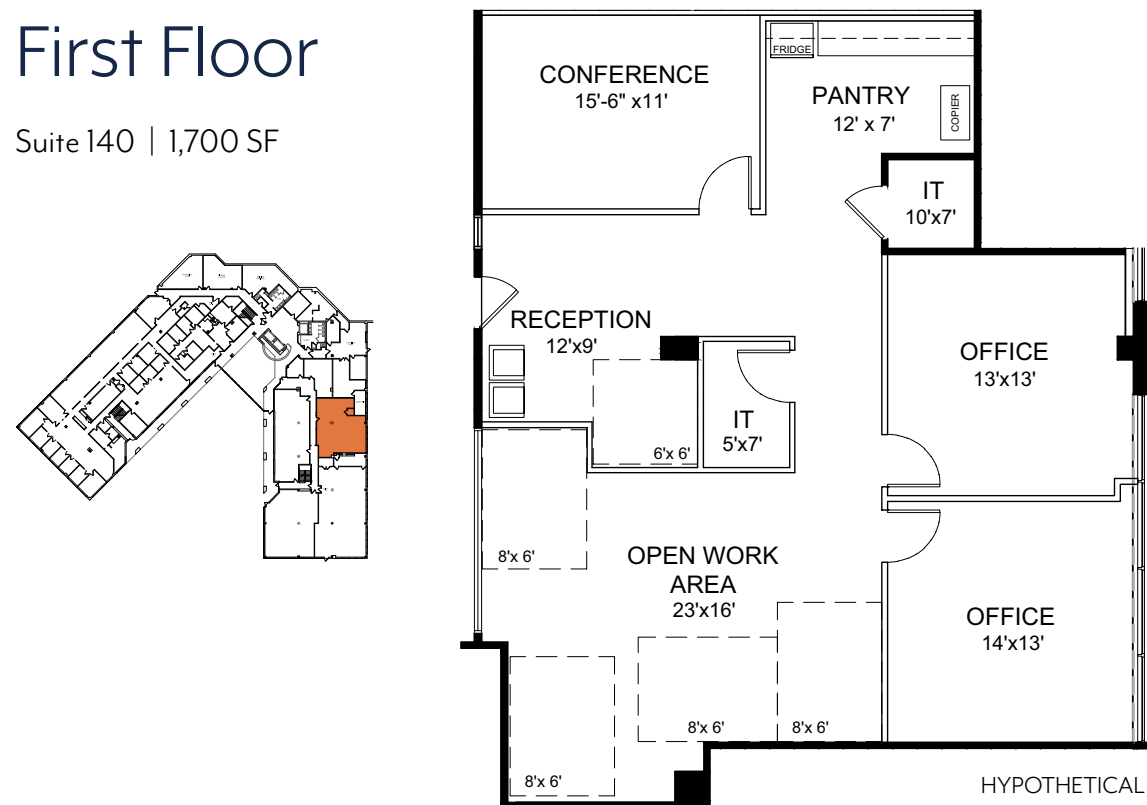
## Third Floor

Suite 300 | 19,644 SF



## First Floor

Suite 140 | 1,700 SF



## Fourth Floor

Suite 450 | 4,400 SF





**Maryland (HQ)**

2273 Research Blvd | Suite 150  
Rockville, MD 20850  
301.222.0200

**Washington, D.C.**

1828 L St, NW | Suite 260  
Washington, DC 20036  
202.587.9600

**Virginia**

7900 Westpark Dr | Suite A340  
McLean, VA 22102  
703.334.5600

**Pennsylvania**

235 Fort Pitt Blvd  
Pittsburgh, PA 15222  
412.894.1818

[www.edgecre.com](http://www.edgecre.com)

