

790 East Colorado

790 E Colorado Blvd., 9th Floor, Pasadena, CA 91101



PRIVATE OFFICES

Highly professional private offices for individuals and teams that are flexible and scaled for growth.

MEETING ROOMS

Spacious, well-appointed meeting rooms with on-site administrative support. Available for an hour, day or longer.

VIRTUAL OFFICES

Establish a business presence with mail handling, phone answering or meeting room time.

ABOUT THIS LOCATION

In the heart of the Pasadena Financial District, our 790 East Colorado location offers an ideal location for office space, a virtual office, or any other business need. The offices are large and impressive with 20 foot ceilings that feature penthouse views of the Pasadena Mountains, Old Town Pasadena, and Downtown Pasadena. If your business is looking for a beautiful office location in or around Pasadena, Premier Workspaces has the solution.

CONTACT US

Let's touch base! Contact the on-site General Manager at 626-240-0600 or PASmanager@premierworkspaces.com to schedule a tour.



790 East Colorado

790 E Colorado Blvd., 9th Floor, Pasadena, CA 91101



PREMIER AMENITIES

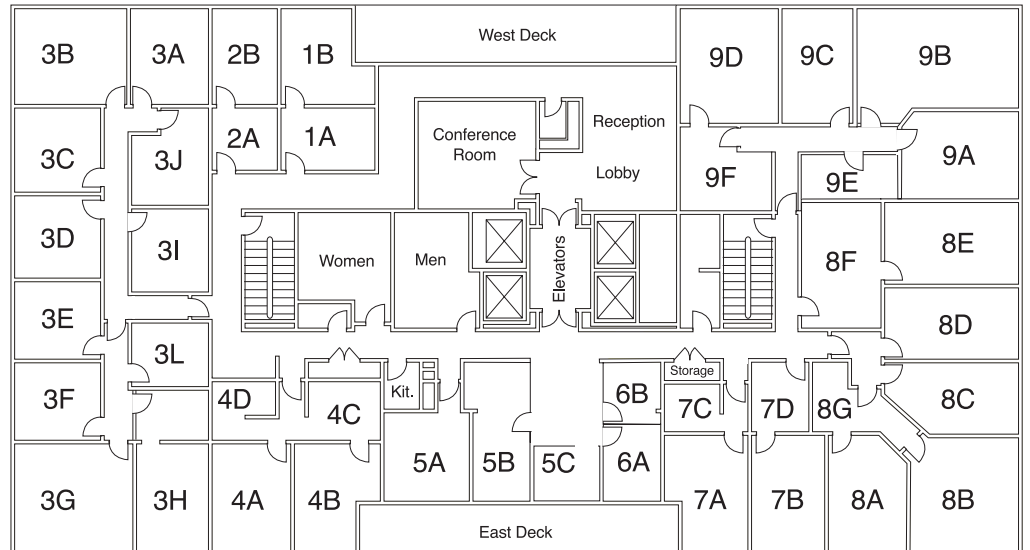
Our private suites are fully furnished and can be easily customized to fit your desired aesthetic and brand.

- Private Offices
- Team Rooms
- High Speed Internet
- Telephone Answering
- Mail Collection
- Equipped Kitchen
- Day Offices
- Meeting Rooms
- Daily Janitorial

PREMIER DIFFERENCE

We've been perfecting the professional workspace for over 16 years.

- Highly-Professional Atmosphere
- On-Site Manager & Support Staff
- Scalable Solutions for Individuals and Teams
- On-Site Billing
- 90+ Locations Nationwide



NEARBY AMENITIES

790 East Colorado is located with easy access to the 210, 134, and 110 freeways, and near the Colorado Boulevard and Lake Boulevard intersection. The Bob Hope Airport in Burbank, CA is 17 miles, or 20 minutes, from the building. For parking, there is a parking structure attached to the building provide hourly, daily and monthly rates, as well as one hour street parking around the building. Other forms of transportation in the San Gabriel Valley include the Metro Gold Line.

CONTACT US

Let's touch base! Contact the on-site General Manager at 626-240-0600 or PASmanager@premierworkspaces.com to schedule a tour.