



For Lease or Sale

Building A at Park 75

- Freestanding building in Park 75 with grounds managed by the Hemmer Company
- Approximately 3,400 square feet available in one-story office with 5,235 total square feet
- Facility includes private offices, a large lobby, bathrooms and a large kitchen
- Plentiful, convenient parking
- High visibility with signage on I-75
- Abundant amenities within a two-mile radius
- Located off of I-71 near I-275, close to Crestview Hills Town Center and CVG
- No building load factor

224 Grandview Dr

Ft. Mitchell, KY 41017

Todd Pease

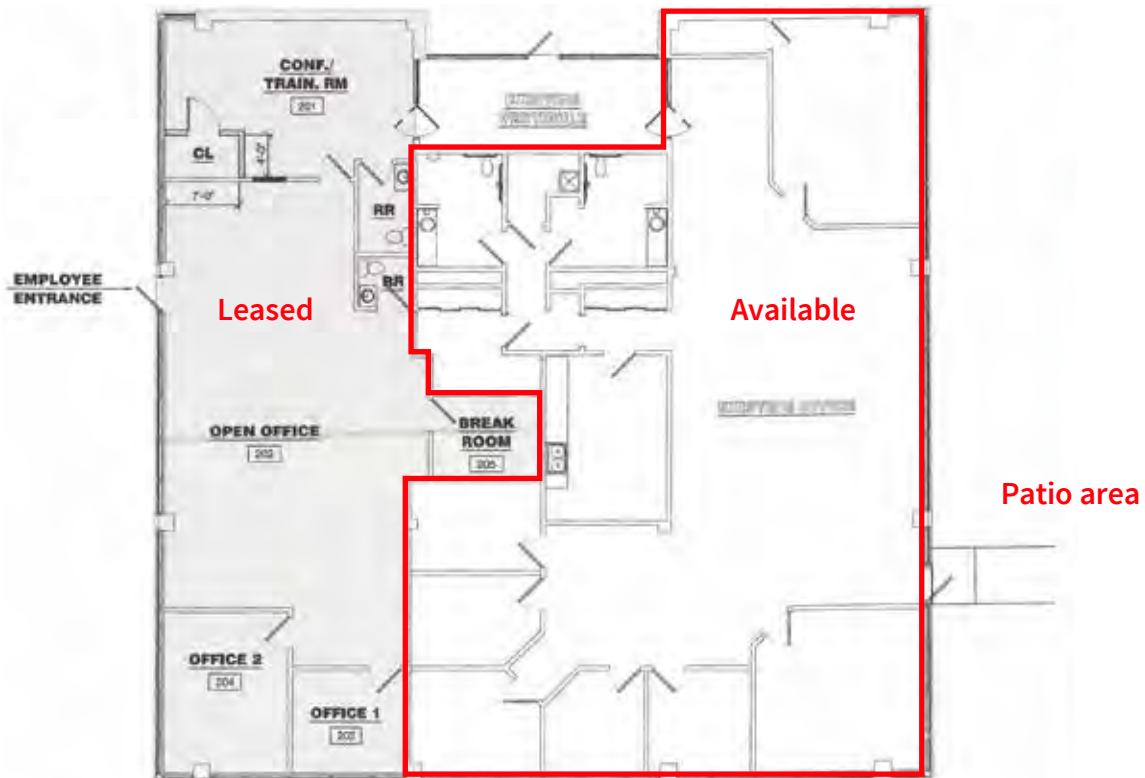
+1 513 297 2506

todd.pease@am.jll.com

jll.com/cincinnati



Office building



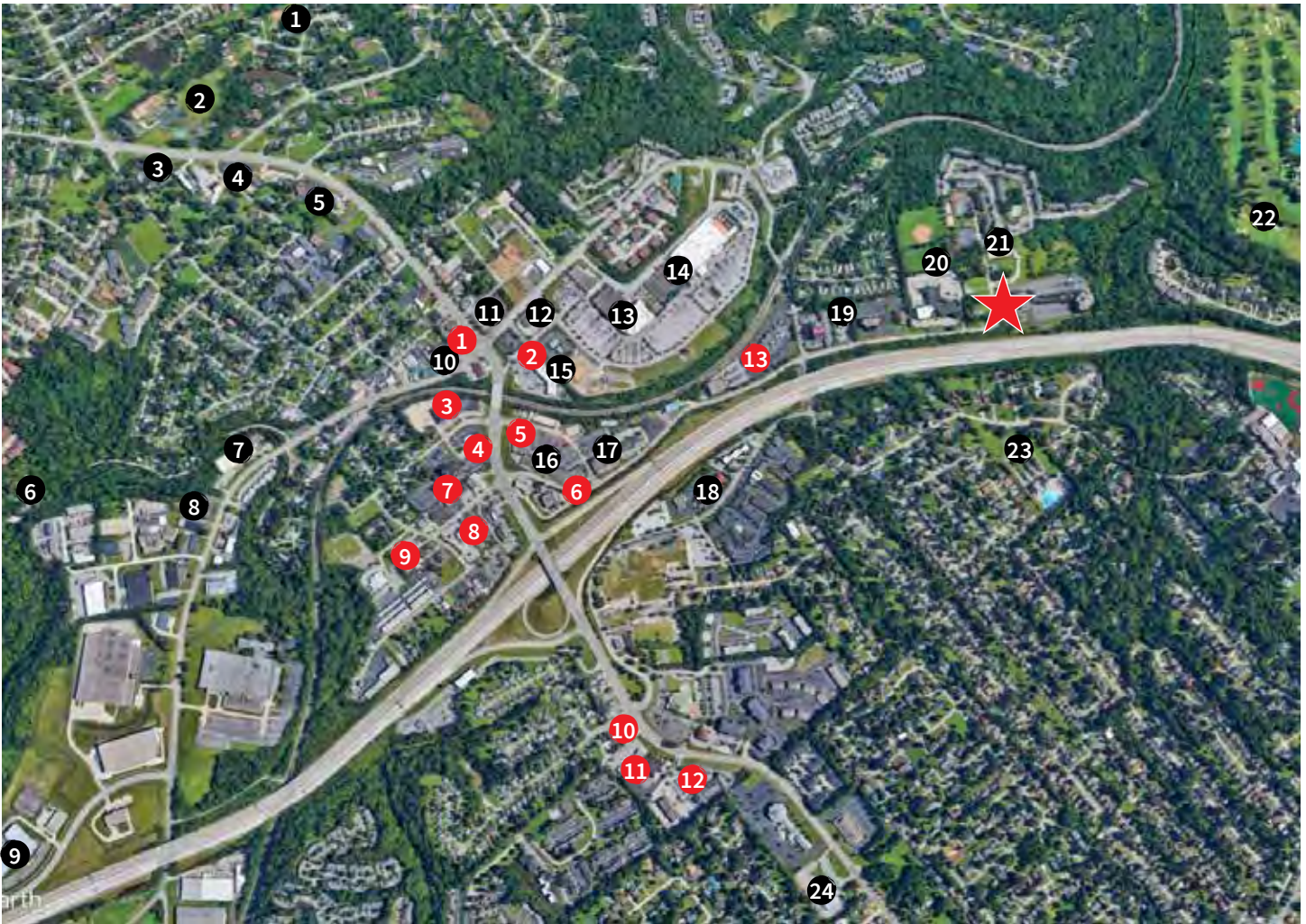
Location



DISCLAIMER

Although information has been obtained from sources deemed reliable, neither Owner nor JLL makes any guarantees, warranties or representations, express or implied, as to the completeness or accuracy as to the information contained herein. Any projections, opinions, assumptions or estimates used are for example only. There may be differences between projected and actual results, and those differences may be material. The Property may be withdrawn without notice. Neither Owner nor JLL accepts any liability for any loss or damage suffered by any party resulting from reliance on this information. If the recipient of this information has signed a confidentiality agreement regarding this matter, this information is subject to the terms of that agreement. ©2019. Jones Lang LaSalle IP, Inc. All rights reserved.





Area amenities

Dining

- 1 LaRosa's Pizza
- 2 Bonefish Grill
- 3 Dunkin' Donuts
- 4 Skyline Chili
- 5 Domino's Pizza
- 6 Guru India
- 7 Sweet Basil Thai & Sushi Bar
- 8 McDonald's, Miyako Sushi & Grill
- 9 Burger King
- 10 Average Joes Bar & Grille
- 11 Ft Mitchell Sports Bar, Oriental Wok
- 12 Graeter's Ice Cream
- 13 Behle Street by Sheli

Services and Recreation

- 1 Walton Park
- 2 Crescent Springs Community Park
- 3 Rainbow Child Care Center
- 4 Kremer's Market
- 5 BB&T, Chase Bank
- 6 Playpen Kennels
- 7 Northern Kentucky Ice Center
- 8 Allie's Walkabout
- 9 Griffin Elite Sports & Wellness
- 10 Crescent Springs Hardware, Hobby Villa
- 11 Walgreens
- 12 FedEx Office Print & Ship Center
- 13 Remke Markets, LA Fitness

- 14 Field & Stream, Home Depot
- 15 PNC Bank, Cork 'n Bottle, Footworks
- 16 The UPS Store
- 17 Staples
- 18 Super 8 by Wyndham
- 19 The Goddard School
- 20 General Ormsby Mitchel Park
- 21 Flourish Massage & Bodywork
- 22 Fort Mitchell Country Club
- 23 Beechwood Swim Club
- 24 United States Postal Service