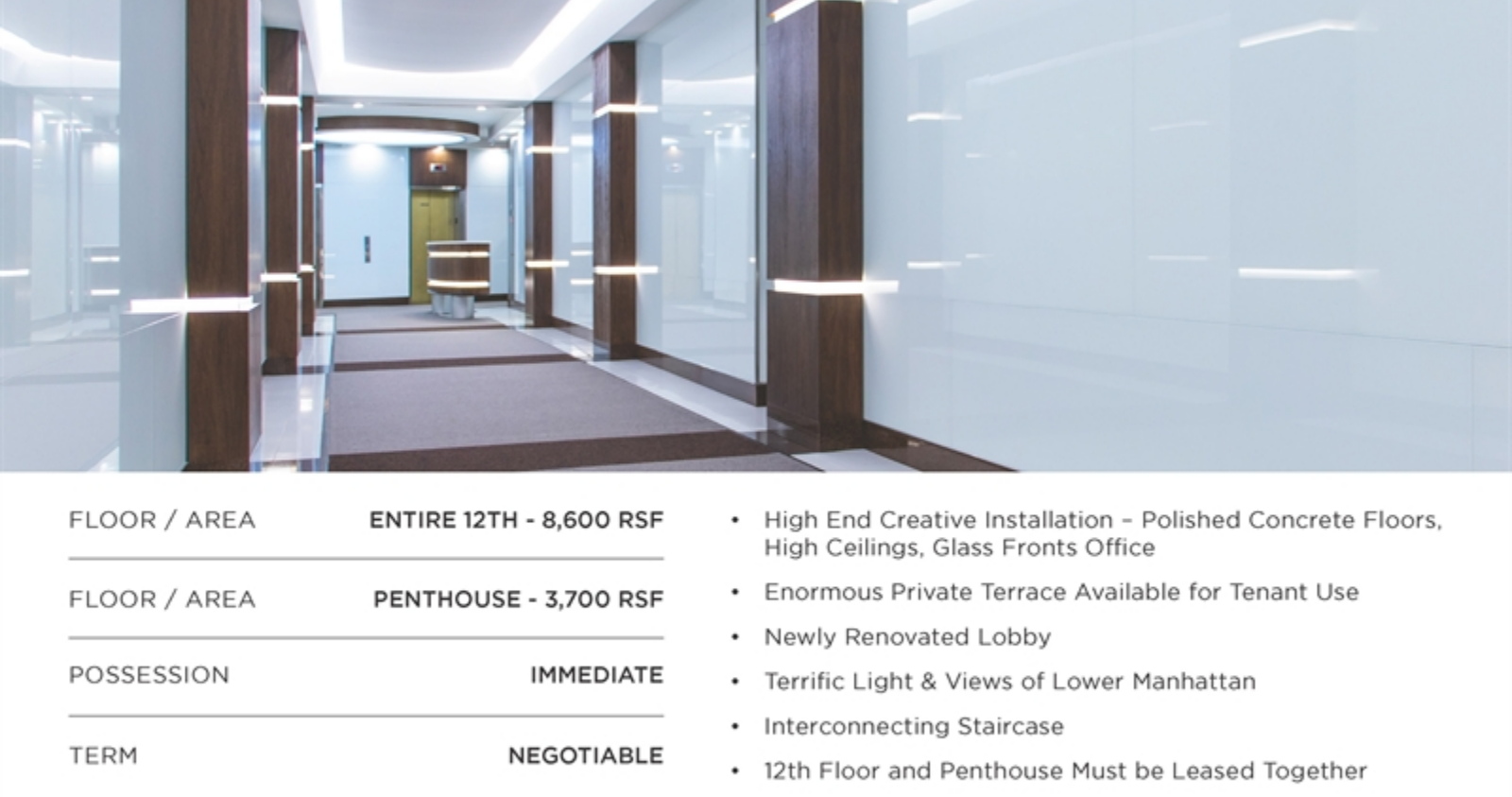
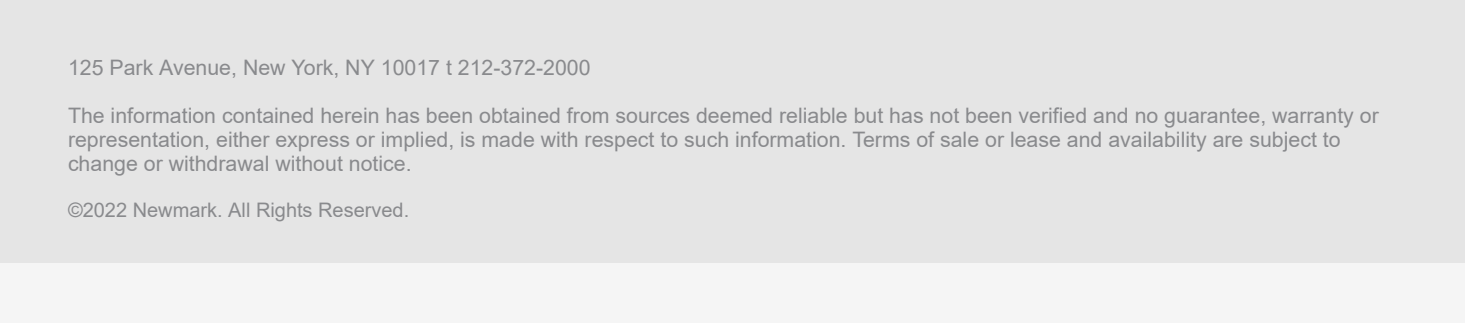
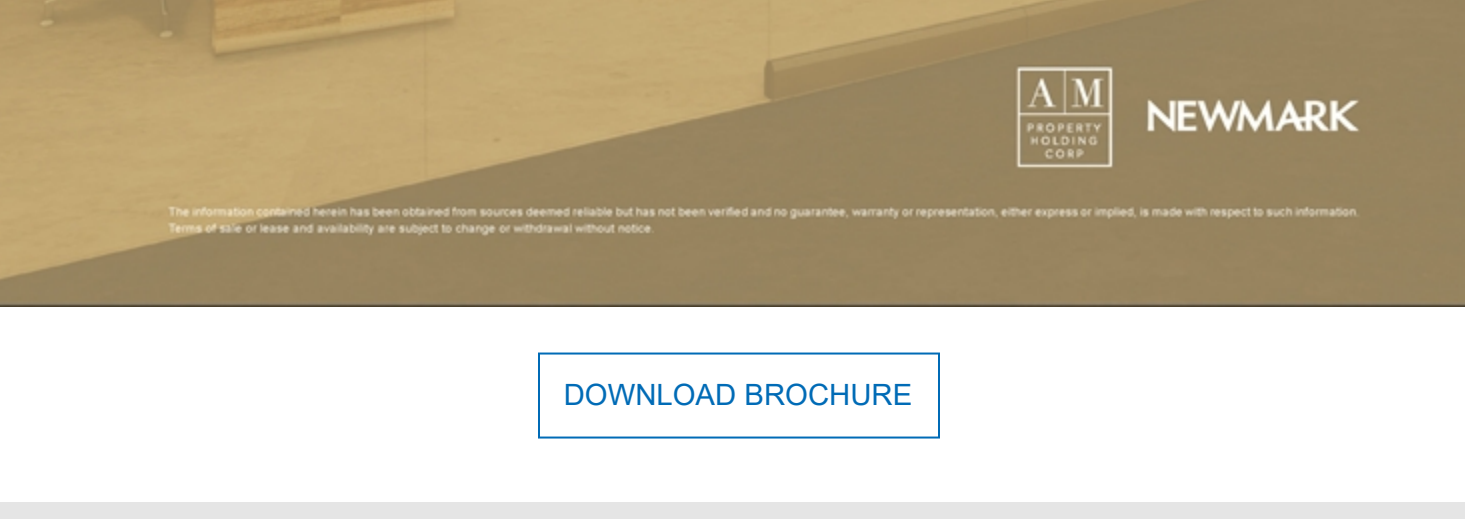
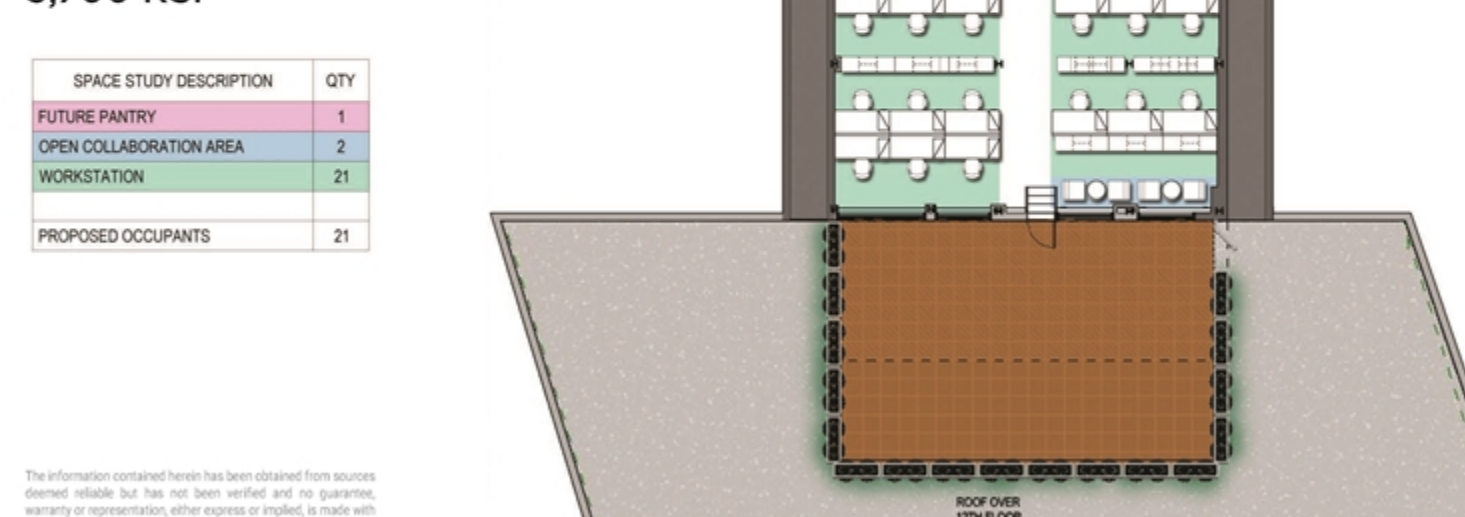
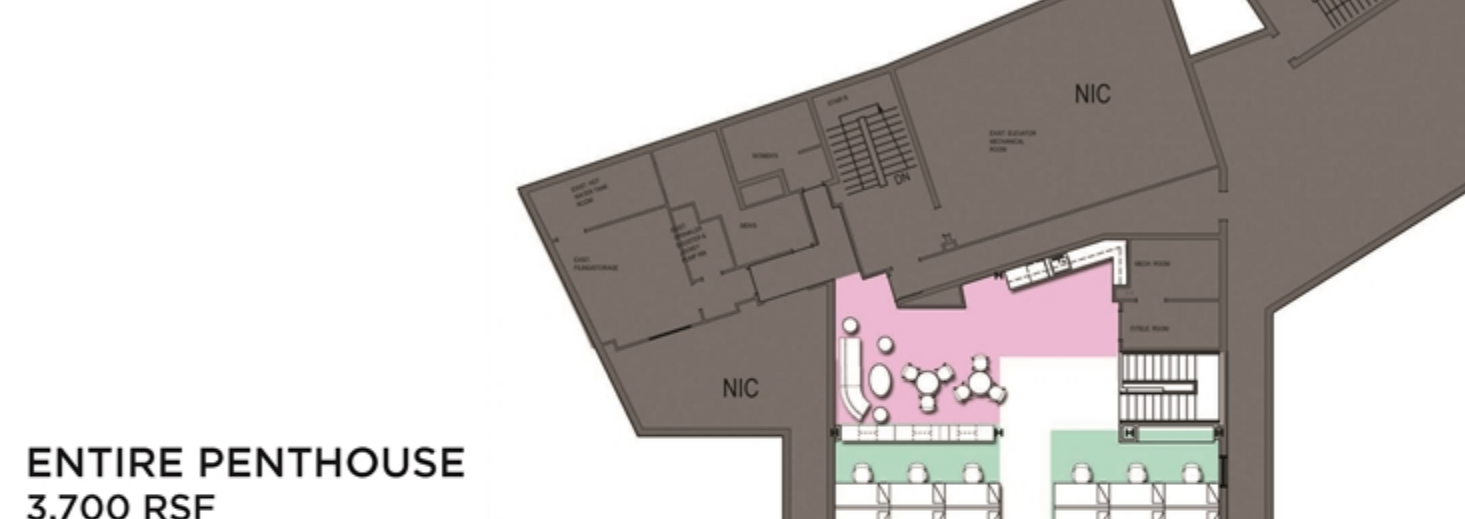
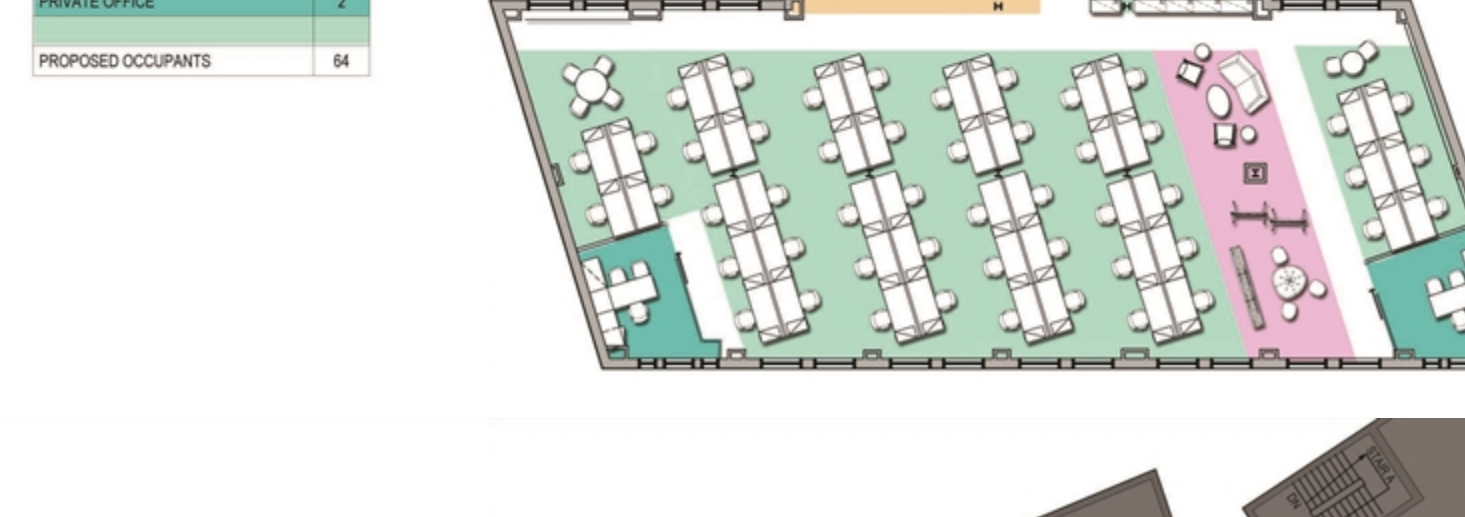
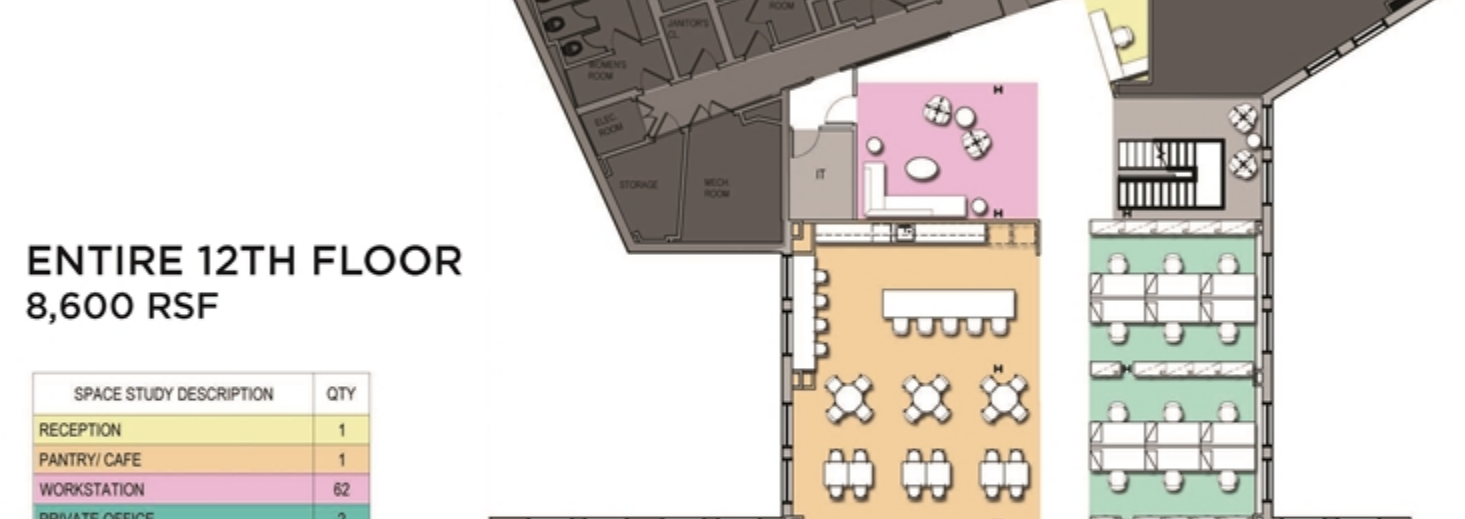
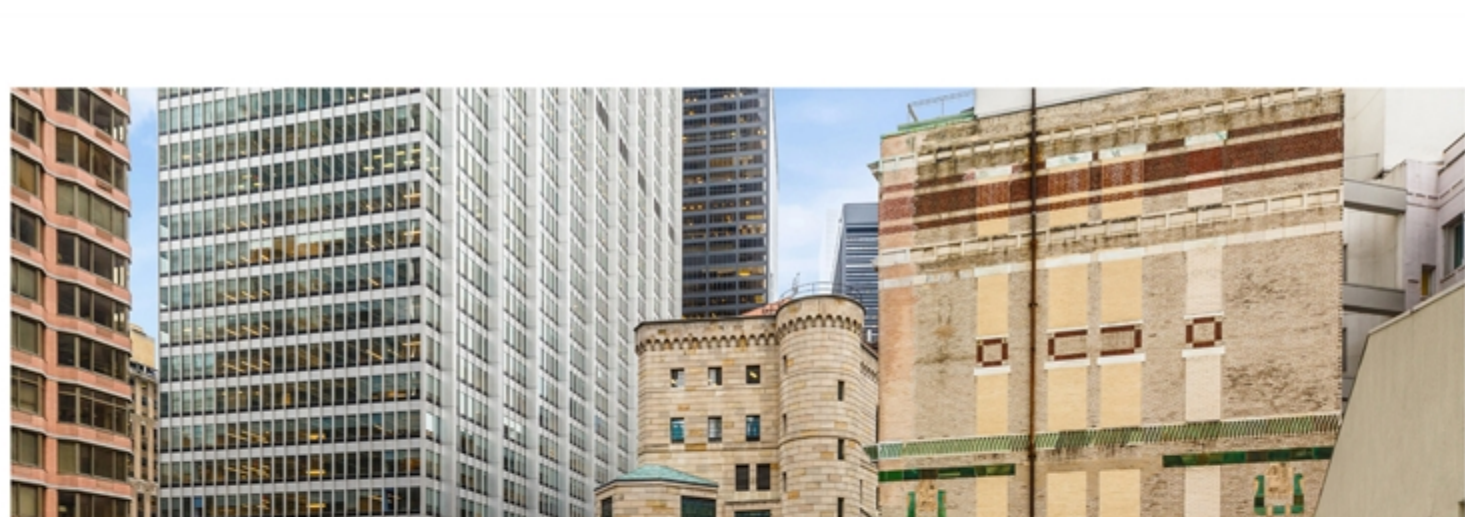
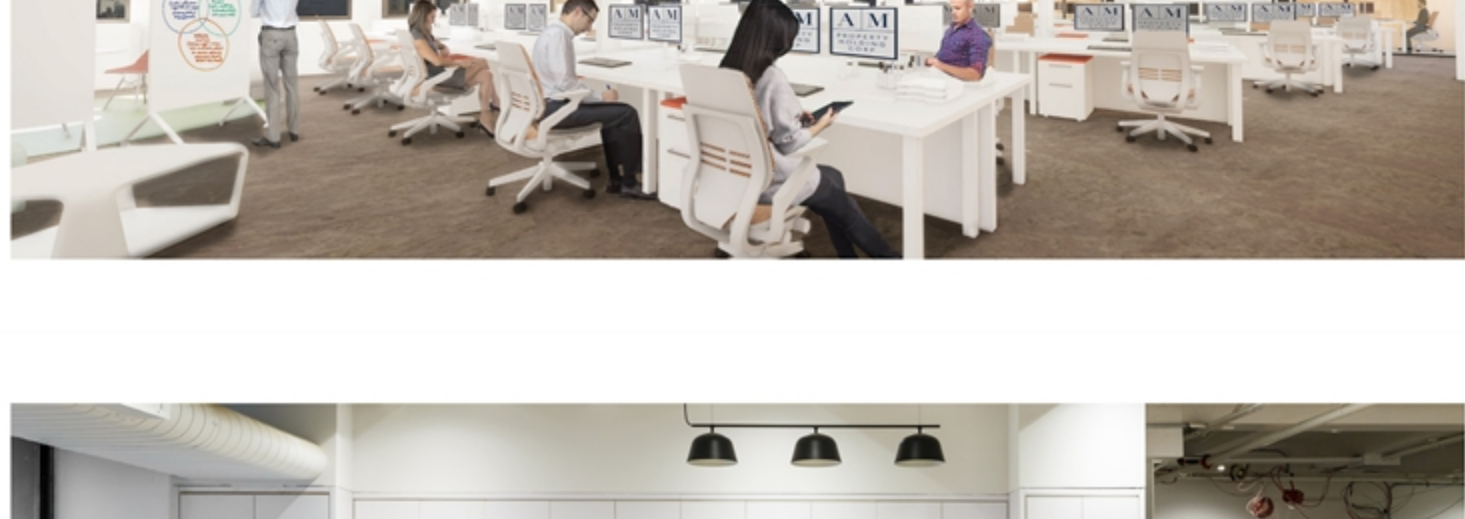
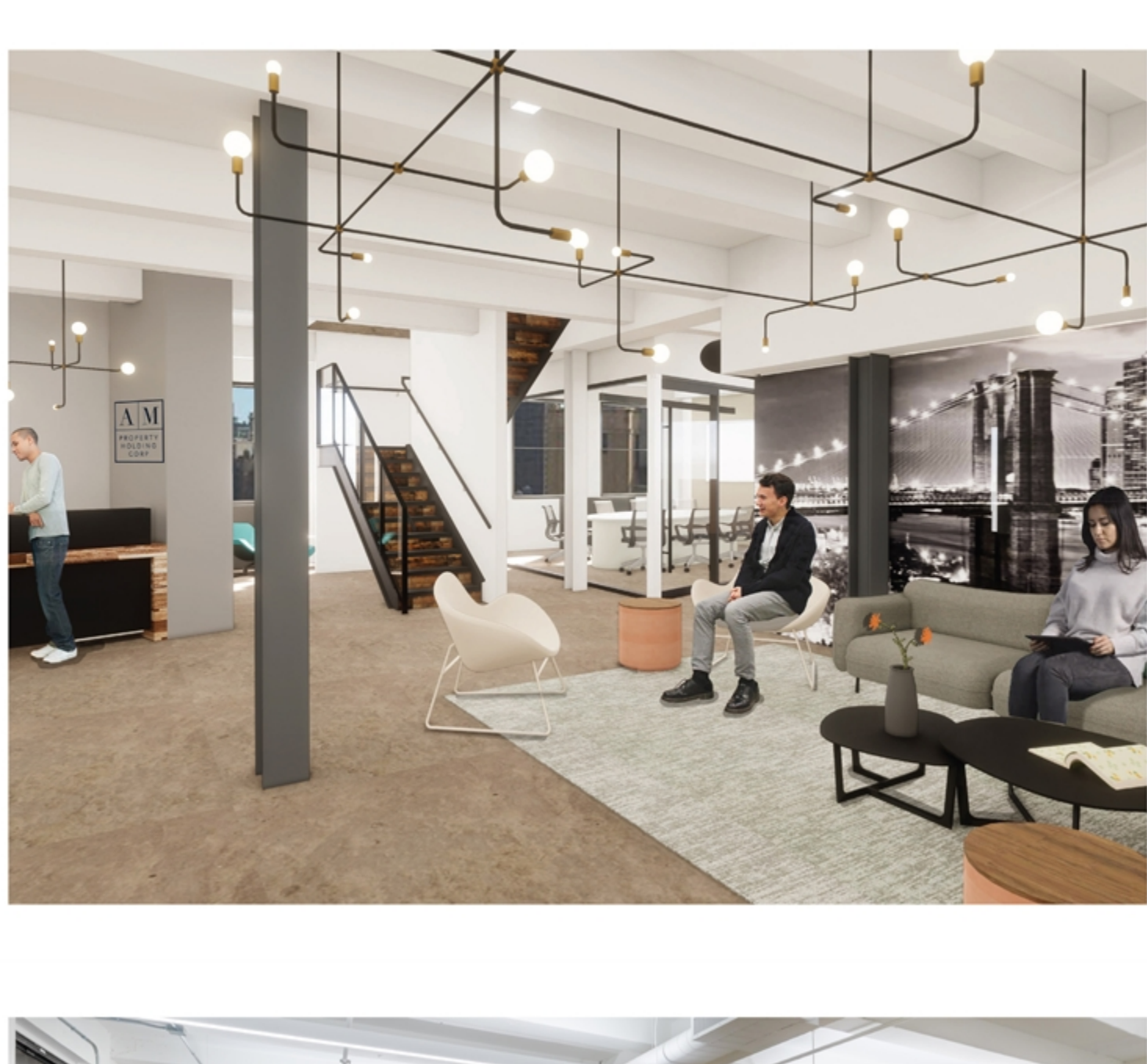


# 70 MAIDEN LANE



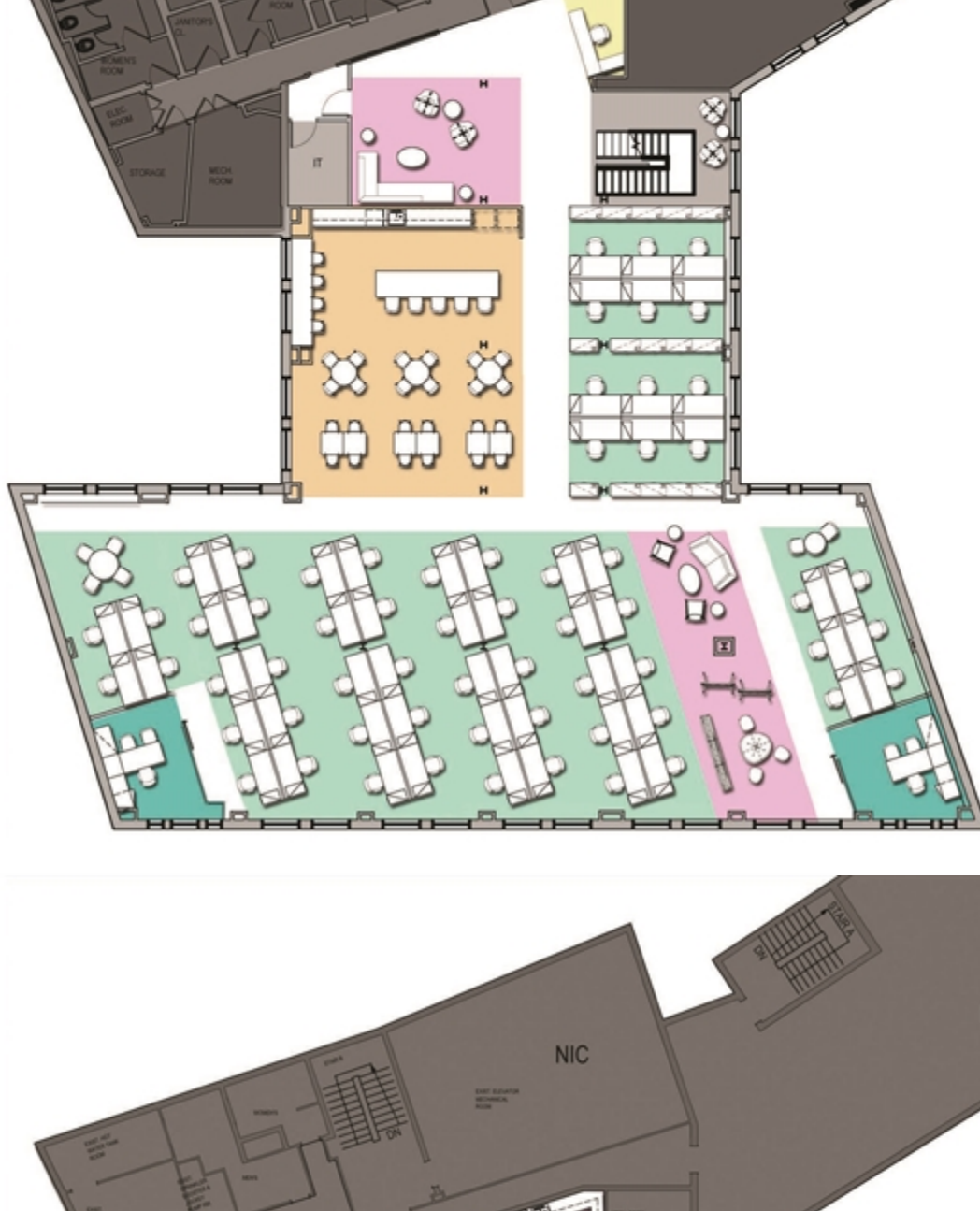
FLOOR / AREA	ENTIRE 12TH - 8,600 RSF	• High End Creative Installation – Polished Concrete Floors, High Ceilings, Glass Fronts Office
FLOOR / AREA	PENTHOUSE - 3,700 RSF	• Enormous Private Terrace Available for Tenant Use
POSSESSION	IMMEDIATE	• Newly Renovated Lobby
TERM	NEGOTIABLE	• Terrific Light & Views of Lower Manhattan
		• Interconnecting Staircase
		• 12th Floor and Penthouse Must be Leased Together

WILLIAM GROVER 212-372-2188 william.grover@nrmk.com	ANDREW DUFFY 212-233-8142 andrew.duffy@nrmk.com	RYAN GESSIN 646-441-3725 ryan.gessin@nrmk.com	ROSS PERLMAN 212-372-2094 ross.perlman@nrmk.com	AM PROPERTY HOLDING CORP. NEWMARK
---	---	---	---	-----------------------------------



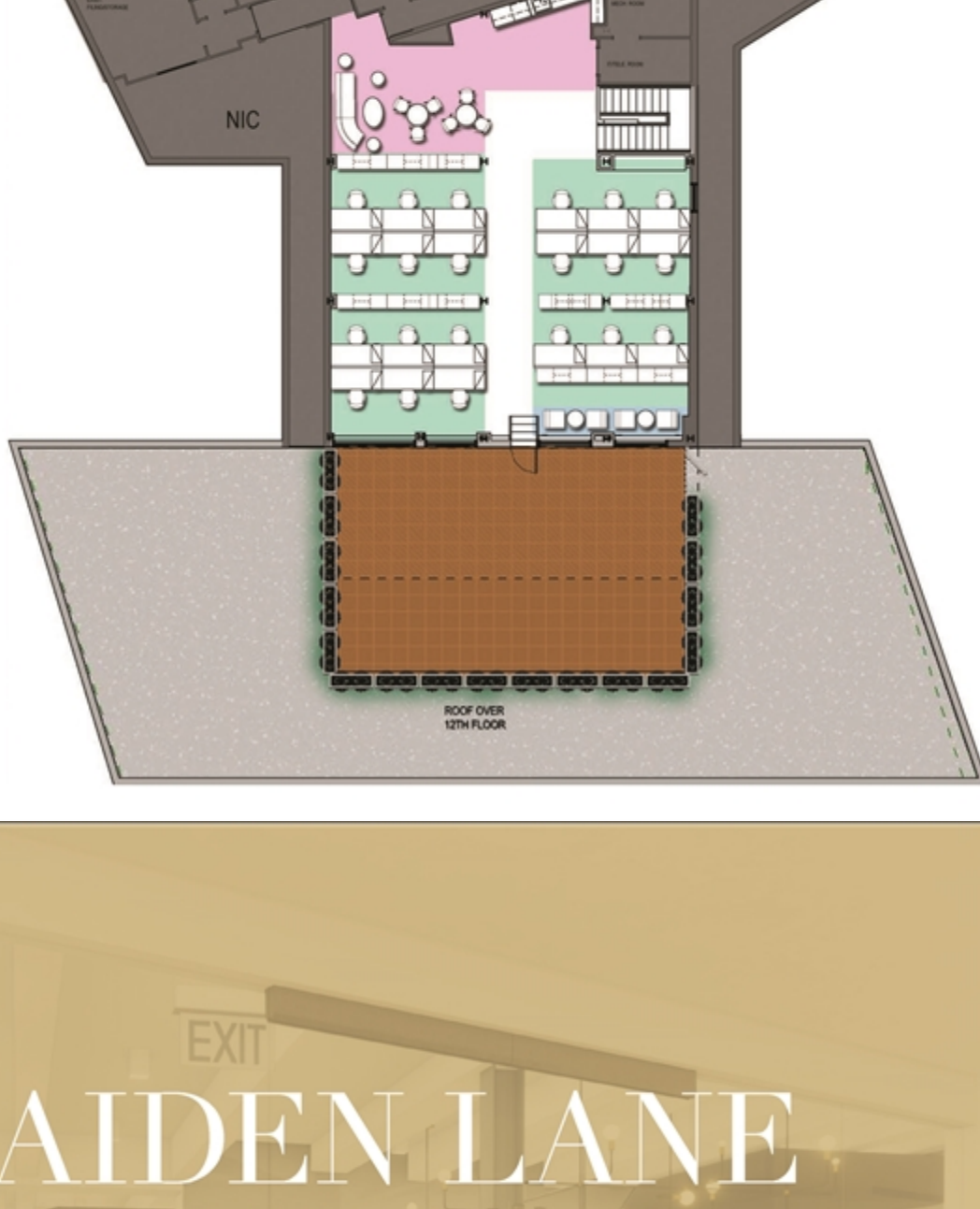
## ENTIRE 12TH FLOOR 8,600 RSF

SPACE STUDY DESCRIPTION	QTY
RECEPTION	1
PANTRY CAFE	1
WORKSTATION	62
PRIVATE OFFICE	2
PROPOSED OCCUPANTS	64



## ENTIRE PENTHOUSE 3,700 RSF

SPACE STUDY DESCRIPTION	QTY
FUTURE PANTRY	1
OPEN COLLABORATION AREA	2
WORKSTATION	21
PROPOSED OCCUPANTS	21

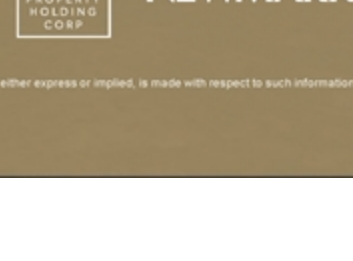


The information contained herein has been obtained from sources deemed reliable but has not been verified and no guarantee, warranty or representation, either express or implied, is made with respect to such information. Terms of sale or lease and availability are subject to change or withdrawal without notice.

# 70 MAIDEN LANE

FOR LEASING OPPORTUNITIES, PLEASE CONTACT

WILLIAM GROVER 212-372-2188 william.grover@nrmk.com	ANDREW DUFFY 212-233-8142 andrew.duffy@nrmk.com
RYAN GESSIN 646-441-3725 ryan.gessin@nrmk.com	ROSS PERLMAN 212-372-2094 ross.perlman@nrmk.com



[DOWNLOAD BROCHURE](#)