

LAND FOR SALE



27206 Michigan Avenue

Inkster, MI

Insite
COMMERCIAL

1111 W. Oakley Park Road
Suite 220
Commerce, Michigan 48390
(248) 359-9000 – Detroit Office
(616) 241-2200 – Grand Rapids Office
www.insitecommercial.com

TABLE OF CONTENTS

LAND FOR SALE

**27206 Michigan Avenue
Inkster, MI**

DISCLAIMER/DISCLOSURE	page 1
SUMMARY	page 2
AERIAL	page 3
AREA MAPS	page 4
DEMOGRAPHICS	pages 5-7
TRAFFIC COUNTS	page 8



Information contained herein was obtained from sources deemed to be reliable, but is not guaranteed. Any prospective purchaser/investor/tenant contemplating, under contract or in escrow for a transaction is urged to verify all information and to conduct their own inspections, investigations and due diligence through appropriate third party independent professionals selected by such prospective purchaser/investor/tenant.

All financial data should be verified by the prospective purchaser/investor/tenant including obtaining and reading applicable documents and reports and consulting appropriate independent professionals. Insite Commercial makes no warranties and/or representations regarding the veracity, completeness, or relevance of any financial data or assumptions. Insite Commercial does not serve as a financial advisor to any party regarding any proposed transaction. All data and assumptions regarding financial performance, including that used for financial modeling purposes, may differ from actual data or performance. Any estimates of market rents and/or projected rents that may be provided to a party do not necessarily mean that rents can be established at or increased to that level. Parties must evaluate any applicable contractual and governmental limitations, as well as market conditions, vacancy factors and other issues in order to determine rents from or for the property.

Legal questions from the prospective purchaser/investor/tenant should be discussed with an attorney. Tax questions from the prospective purchaser/investor/tenant should be discussed with a certified public accountant or tax attorney. Title questions from the prospective purchaser/investor/tenant should be discussed with a title officer or attorney. Questions from the prospective purchaser/investor/tenant regarding the condition of the property and whether the property complies with applicable governmental requirements should be discussed with appropriate engineers, architects, contractors, other consultants and governmental agencies. All properties and services are marketed by Insite Commercial in compliance with all applicable fair housing and equal opportunity laws.



Location: 27206 Michigan Avenue
Inkster, MI 48141

Parcel ID: 44-018-03-0136-000

Total Land Size: 0.33 acres

Sale Price: \$49,900

Utilities: All utilities

Zoning: TCD - Town Center District

Property Taxes: \$1,939.48

Demographics within

a 5-mile radius: Population: 279,994 Persons
Households: 120,154 HH
Avg. HH Income: \$65,402 USD
Traffic Count: 39,880 VPD

Comments: Vacant Land located on Michigan Avenue, just east of Inkster. 140' of frontage on Michigan Avenue.

For Information Contact:

KYLE NELSON

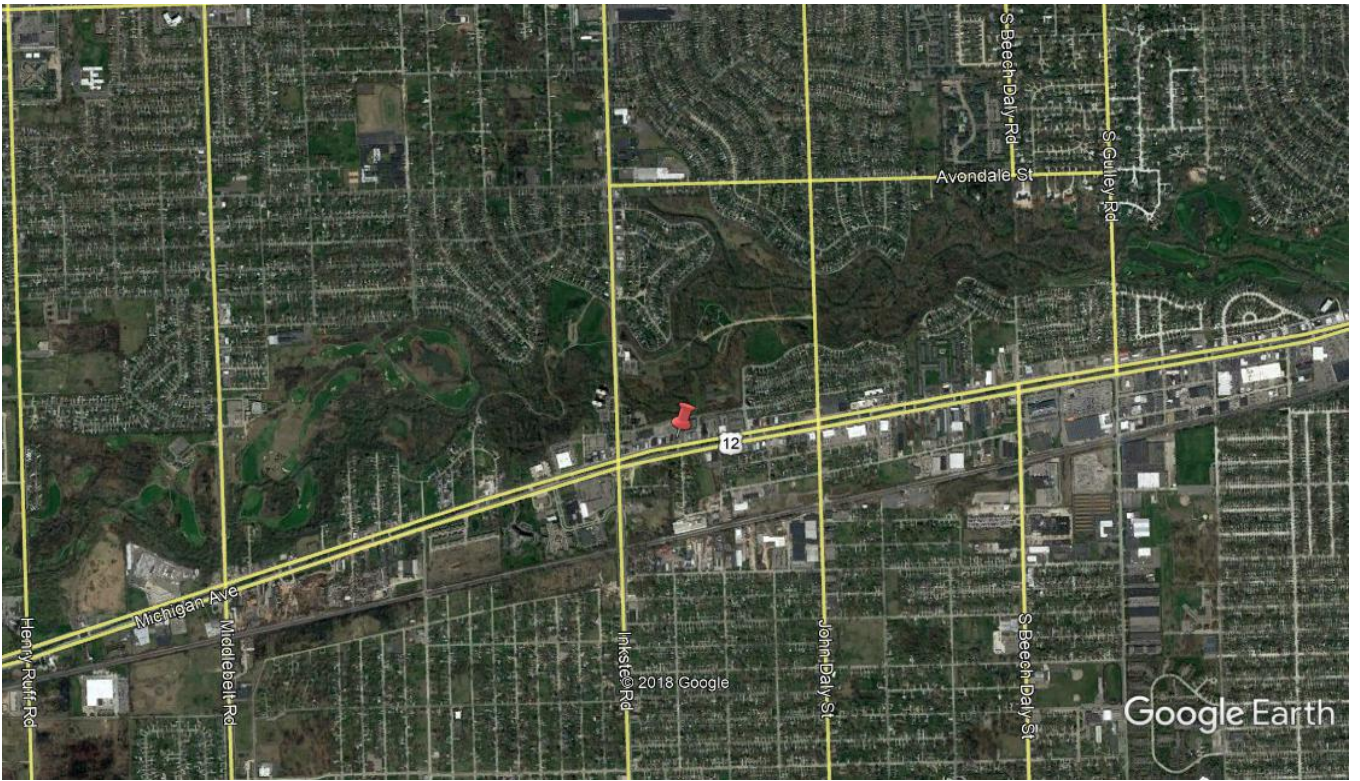
248-359-9000



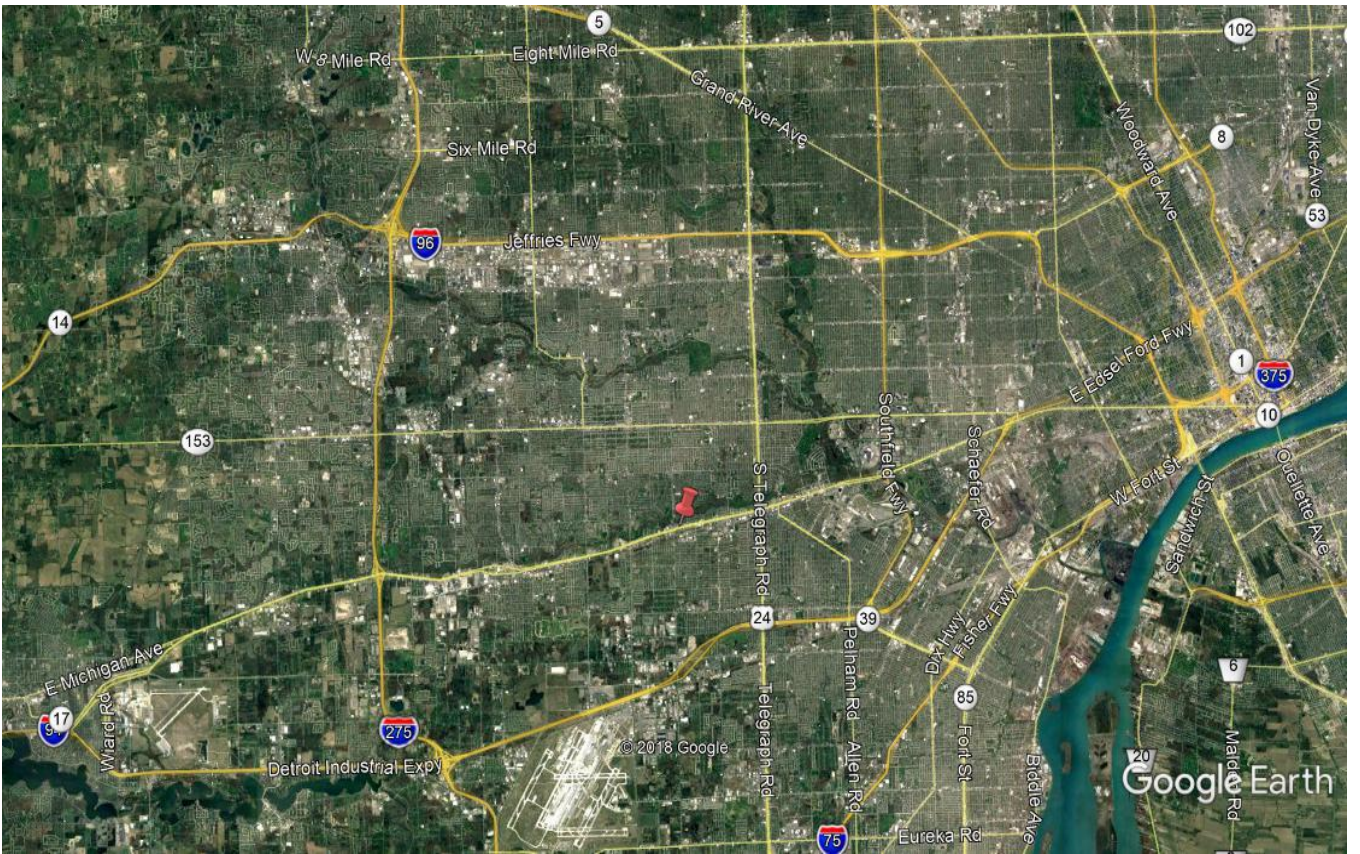


OFFICE | INDUSTRIAL | RETAIL | LAND | INVESTMENT | TENANT REPRESENTATION | CORPORATE SERVICES | PROPERTY MANAGEMENT | AVIATION SERVICES





Local Map



Regional Map

FULL PROFILE

2000-2010 Census, 2019 Estimates with 2024 Projections

Calculated using Weighted Block Centroid from Block Groups



Lat/Lon: 42.2949/-83.308

RF1

27236 Michigan Ave

Inkster, MI 48141

1 mi radius 3 mi radius 5 mi radius

		1 mi radius	3 mi radius	5 mi radius
POPULATION	2019 Estimated Population	9,838	117,064	279,994
	2024 Projected Population	9,539	111,519	267,629
	2010 Census Population	10,465	122,647	291,778
	2000 Census Population	12,587	132,153	306,909
	Projected Annual Growth 2019 to 2024	-0.6%	-0.9%	-0.9%
	Historical Annual Growth 2000 to 2019	-1.1%	-0.6%	-0.5%
HOUSEHOLDS	2019 Estimated Households	4,137	48,861	120,154
	2024 Projected Households	3,984	46,197	113,985
	2010 Census Households	4,101	47,713	116,511
	2000 Census Households	4,702	50,777	121,703
	Projected Annual Growth 2019 to 2024	-0.7%	-1.1%	-1.0%
	Historical Annual Growth 2000 to 2019	-0.6%	-0.2%	-
AGE	2019 Est. Population Under 10 Years	13.6%	12.9%	12.7%
	2019 Est. Population 10 to 19 Years	12.9%	12.8%	12.5%
	2019 Est. Population 20 to 29 Years	14.2%	13.9%	13.8%
	2019 Est. Population 30 to 44 Years	17.9%	19.1%	19.3%
	2019 Est. Population 45 to 59 Years	19.4%	19.3%	19.3%
	2019 Est. Population 60 to 74 Years	15.5%	15.5%	15.5%
	2019 Est. Population 75 Years or Over	6.5%	6.5%	6.8%
	2019 Est. Median Age	36.6	36.9	37.3
MARITAL STATUS & GENDER	2019 Est. Male Population	47.5%	48.7%	48.6%
	2019 Est. Female Population	52.5%	51.3%	51.4%
	2019 Est. Never Married	46.6%	36.7%	36.1%
	2019 Est. Now Married	24.8%	39.9%	40.6%
	2019 Est. Separated or Divorced	20.1%	16.8%	16.8%
	2019 Est. Widowed	8.5%	6.6%	6.5%
INCOME	2019 Est. HH Income \$200,000 or More	0.4%	2.6%	2.3%
	2019 Est. HH Income \$150,000 to \$199,999	1.2%	5.2%	4.9%
	2019 Est. HH Income \$100,000 to \$149,999	5.7%	12.8%	12.7%
	2019 Est. HH Income \$75,000 to \$99,999	9.4%	13.3%	14.3%
	2019 Est. HH Income \$50,000 to \$74,999	19.9%	20.2%	19.8%
	2019 Est. HH Income \$35,000 to \$49,999	13.0%	13.5%	14.1%
	2019 Est. HH Income \$25,000 to \$34,999	11.2%	9.5%	9.8%
	2019 Est. HH Income \$15,000 to \$24,999	15.1%	10.4%	10.3%
	2019 Est. HH Income Under \$15,000	24.0%	12.7%	11.8%
	2019 Est. Average Household Income	\$41,870	\$64,543	\$65,402
	2019 Est. Median Household Income	\$35,860	\$57,257	\$56,483
	2019 Est. Per Capita Income	\$17,726	\$27,026	\$28,128
2019 Est. Total Businesses	295	3,170	8,755	
2019 Est. Total Employees	1,915	27,593	99,400	

This report was produced using data from private and government sources deemed to be reliable. The information herein is provided without representation or warranty.

OFFICE | INDUSTRIAL | RETAIL | LAND | INVESTMENT | TENANT REPRESENTATION | CORPORATE SERVICES | PROPERTY MANAGEMENT | AVIATION SERVICES

DEMOGRAPHICS

FULL PROFILE

2000-2010 Census, 2019 Estimates with 2024 Projections

Calculated using Weighted Block Centroid from Block Groups



Lat/Lon: 42.2949/-83.308

RF1

27236 Michigan Ave

Inkster, MI 48141

		1 mi radius	3 mi radius	5 mi radius
RACE	2019 Est. White	24.8%	68.9%	72.9%
	2019 Est. Black	68.0%	24.0%	20.0%
	2019 Est. Asian or Pacific Islander	1.5%	2.4%	2.5%
	2019 Est. American Indian or Alaska Native	0.4%	0.4%	0.4%
	2019 Est. Other Races	5.4%	4.3%	4.2%
HISPANIC	2019 Est. Hispanic Population	338	5,853	14,600
	2019 Est. Hispanic Population	3.4%	5.0%	5.2%
	2024 Proj. Hispanic Population	3.9%	5.3%	5.6%
	2010 Hispanic Population	2.3%	4.0%	4.2%
EDUCATION (Adults 25 or Older)	2019 Est. Adult Population (25 Years or Over)	6,616	79,812	192,430
	2019 Est. Elementary (Grade Level 0 to 8)	3.7%	3.3%	3.7%
	2019 Est. Some High School (Grade Level 9 to 11)	13.8%	8.8%	8.0%
	2019 Est. High School Graduate	32.8%	31.9%	32.8%
	2019 Est. Some College	28.9%	25.1%	25.0%
	2019 Est. Associate Degree Only	8.3%	9.2%	9.4%
	2019 Est. Bachelor Degree Only	9.0%	13.3%	13.6%
	2019 Est. Graduate Degree	3.5%	8.4%	7.5%
HOUSING	2019 Est. Total Housing Units	4,767	52,874	128,610
	2019 Est. Owner-Occupied	48.6%	67.7%	68.5%
	2019 Est. Renter-Occupied	38.2%	24.8%	24.9%
	2019 Est. Vacant Housing	13.2%	7.6%	6.6%
HOMES BUILT BY YEAR	2019 Homes Built 2010 or later	1.0%	0.6%	0.8%
	2019 Homes Built 2000 to 2009	1.9%	2.9%	3.0%
	2019 Homes Built 1990 to 1999	3.0%	3.1%	3.7%
	2019 Homes Built 1980 to 1989	2.1%	3.2%	3.7%
	2019 Homes Built 1970 to 1979	8.5%	8.2%	9.1%
	2019 Homes Built 1960 to 1969	15.7%	15.7%	15.9%
	2019 Homes Built 1950 to 1959	35.9%	35.4%	38.4%
	2019 Homes Built Before 1949	18.8%	23.3%	18.9%
HOME VALUES	2019 Home Value \$1,000,000 or More	0.2%	0.2%	0.2%
	2019 Home Value \$500,000 to \$999,999	1.4%	1.8%	1.7%
	2019 Home Value \$400,000 to \$499,999	1.6%	1.7%	1.6%
	2019 Home Value \$300,000 to \$399,999	2.8%	3.7%	3.1%
	2019 Home Value \$200,000 to \$299,999	6.8%	12.3%	10.0%
	2019 Home Value \$150,000 to \$199,999	10.3%	13.2%	13.6%
	2019 Home Value \$100,000 to \$149,999	10.2%	20.6%	24.9%
	2019 Home Value \$50,000 to \$99,999	27.7%	30.6%	31.3%
	2019 Home Value \$25,000 to \$49,999	23.1%	10.9%	9.8%
	2019 Home Value Under \$25,000	16.4%	7.2%	6.1%
	2019 Median Home Value	\$68,735	\$111,201	\$110,300
2019 Median Rent	\$659	\$697	\$694	

This report was produced using data from private and government sources deemed to be reliable. The information herein is provided without representation or warranty.

OFFICE | INDUSTRIAL | RETAIL | LAND | INVESTMENT | TENANT REPRESENTATION | CORPORATE SERVICES | PROPERTY MANAGEMENT | AVIATION SERVICES

DEMOGRAPHICS

FULL PROFILE

2000-2010 Census, 2019 Estimates with 2024 Projections

Calculated using Weighted Block Centroid from Block Groups



Lat/Lon: 42.2949/-83.308

RF1

27236 Michigan Ave

Inkster, MI 48141

1 mi radius 3 mi radius 5 mi radius

	1 mi radius	3 mi radius	5 mi radius	
LABOR FORCE	2019 Est. Labor Population Age 16 Years or Over	7,706	92,783	223,053
	2019 Est. Civilian Employed	54.2%	60.1%	60.6%
	2019 Est. Civilian Unemployed	2.6%	1.5%	1.5%
	2019 Est. in Armed Forces	-	-	-
	2019 Est. not in Labor Force	43.2%	38.3%	37.9%
	2019 Labor Force Males	46.6%	47.8%	47.8%
	2019 Labor Force Females	53.4%	52.2%	52.2%
OCCUPATION	2019 Occupation: Population Age 16 Years or Over	4,176	55,807	135,194
	2019 Mgmt, Business, & Financial Operations	6.6%	11.6%	11.4%
	2019 Professional, Related	16.0%	20.2%	19.8%
	2019 Service	20.1%	18.8%	18.8%
	2019 Sales, Office	26.3%	22.8%	23.3%
	2019 Farming, Fishing, Forestry	0.2%	0.2%	0.2%
	2019 Construction, Extraction, Maintenance	6.4%	7.5%	7.7%
	2019 Production, Transport, Material Moving	24.5%	19.0%	18.8%
	2019 White Collar Workers	48.8%	54.5%	54.5%
	2019 Blue Collar Workers	51.2%	45.5%	45.5%
TRANSPORTATION TO WORK	2019 Drive to Work Alone	82.0%	82.6%	83.1%
	2019 Drive to Work in Carpool	11.3%	9.4%	8.8%
	2019 Travel to Work by Public Transportation	2.0%	2.4%	2.3%
	2019 Drive to Work on Motorcycle	-	-	-
	2019 Walk or Bicycle to Work	1.7%	2.3%	2.2%
	2019 Other Means	0.4%	0.7%	0.7%
	2019 Work at Home	2.6%	2.6%	2.8%
	2019 Average Travel Time to Work	21.9	21.7	21.7
TRAVEL TIME	2019 Travel to Work in 14 Minutes or Less	17.9%	25.6%	26.9%
	2019 Travel to Work in 15 to 29 Minutes	46.2%	46.1%	45.4%
	2019 Travel to Work in 30 to 59 Minutes	28.5%	30.0%	30.6%
	2019 Travel to Work in 60 Minutes or More	2.8%	4.6%	4.5%
	2019 Average Travel Time to Work	21.9	21.7	21.7
CONSUMER EXPENDITURE	2019 Est. Total Household Expenditure	\$160.99 M	\$2.52 B	\$6.27 B
	2019 Est. Apparel	\$5.54 M	\$87.72 M	\$217.86 M
	2019 Est. Contributions, Gifts	\$8.41 M	\$138.66 M	\$344.07 M
	2019 Est. Education, Reading	\$4.65 M	\$76.05 M	\$186.99 M
	2019 Est. Entertainment	\$8.7 M	\$140.81 M	\$349.88 M
	2019 Est. Food, Beverages, Tobacco	\$25.44 M	\$390.63 M	\$973.35 M
	2019 Est. Furnishings, Equipment	\$5.42 M	\$87.67 M	\$217.92 M
	2019 Est. Health Care, Insurance	\$15.12 M	\$235.33 M	\$587.56 M
	2019 Est. Household Operations, Shelter, Utilities	\$53.59 M	\$821.48 M	\$2.05 B
	2019 Est. Miscellaneous Expenses	\$3.02 M	\$47.68 M	\$118.69 M
	2019 Est. Personal Care	\$2.15 M	\$33.84 M	\$84.27 M
2019 Est. Transportation	\$28.95 M	\$460.31 M	\$1.15 B	

This report was produced using data from private and government sources deemed to be reliable. The information herein is provided without representation or warranty.

OFFICE | INDUSTRIAL | RETAIL | LAND | INVESTMENT | TENANT REPRESENTATION | CORPORATE SERVICES | PROPERTY MANAGEMENT | AVIATION SERVICES

