

OCEAN RANCH CORPORATE CENTER

3720 OCEANIC WAY, SUITE 202
OCEANSIDE, CA 92056

± 1,570 SF INDUSTRIAL CONDO

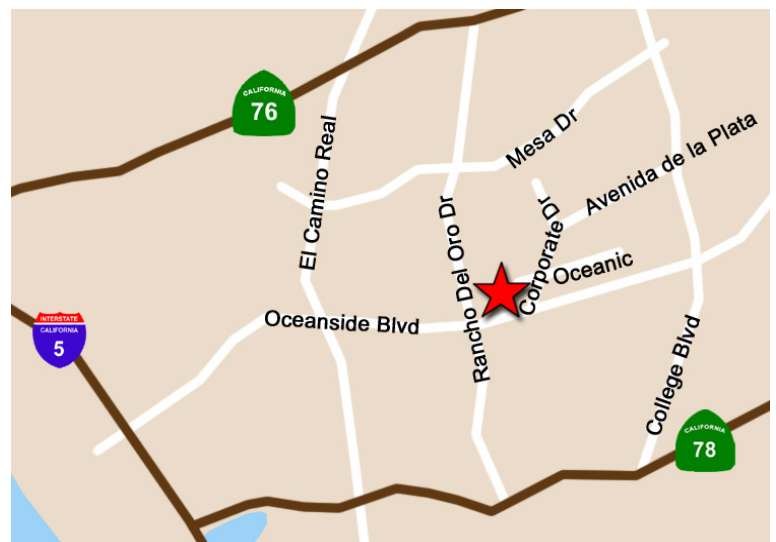


FOR SALE OR LEASE



PROPERTY FEATURES

- Approximately 1,570 SF available
- Approximately 500 SF of office
- Reception, private office, kitchenette and restroom
- 200 amps, 120/208 volt
- 20' clear height
- 12' x 14' grade level door
- Sale Price: \$234,000
- Lease Rate: \$0.72/SF + association dues
- Low association dues (approximately \$0.17 PSF / month)
- Call broker to show - please do not disturb tenant
- Available April 1, 2014



For more information, please contact:

BOB WILLINGHAM

Director

(760) 517 5846

bob.willingham@cushwake.com

Lic. #01469841

CUSHMAN & WAKEFIELD OF SAN DIEGO, INC.

Lic. #01329963

5800 Armada Drive, Suite 101

Carlsbad, CA 92008

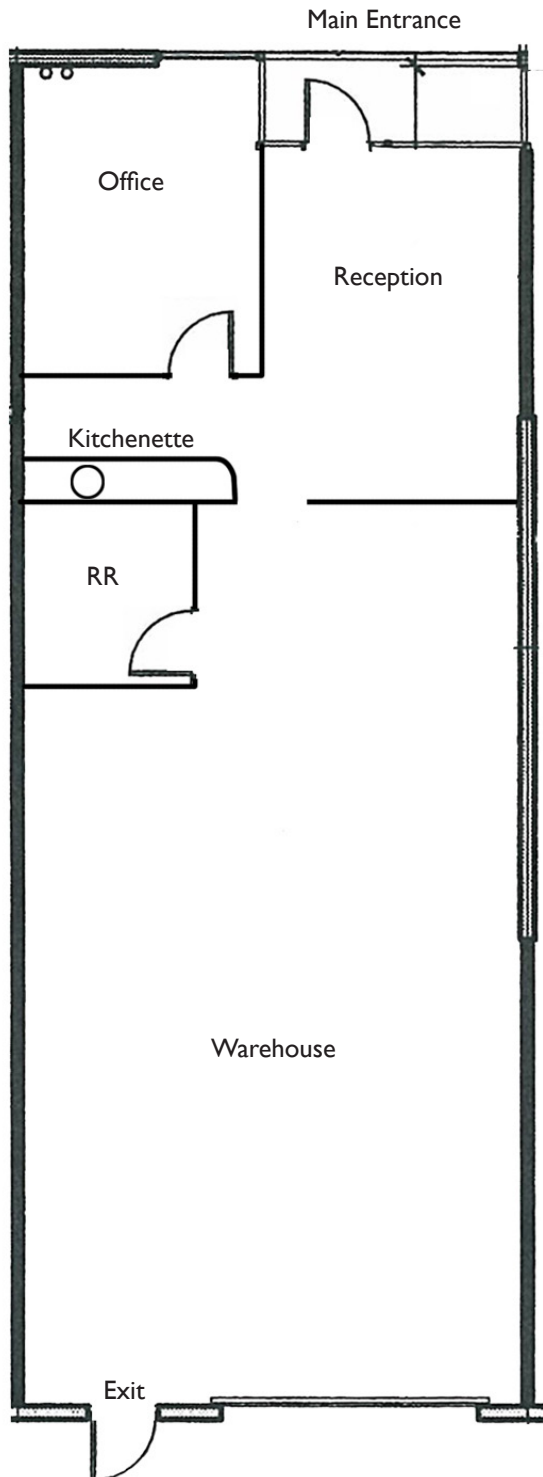
www.cushmanwakefield.com

The depiction in the included photograph of any person, entity, sign, logo or property, other than Cushman & Wakefield's (C&W) client and the property offered by C&W, is incidental only, and is not intended to connote any affiliation, connection, association, sponsorship or approval by or between that which is incidentally depicted and C&W or its client. This listing shall not be deemed an offer to lease, sublease or sell such property; and, in the event of any transaction for such property, no commission shall be earned by or payable to any cooperating broker except if otherwise provided pursuant to the express terms, rates and conditions of C&W's agreement with its principal, if, as and when such commission (if any) is actually received from such principal. (A copy of the rates and conditions referred to above with respect to this property is available upon request.)

3720 OCEANIC WAY, SUITE 202

Oceanside

Industrial Condo
for Sale or Lease



For more information, please contact:

BOB WILLINGHAM

Director

(760) 517 5846

bob.willingham@cushwake.com

Lic. #01469841

CUSHMAN & WAKEFIELD OF SAN DIEGO, INC.

Lic. #01329963

5800 Armada Drive, Suite 101

Carlsbad, CA 92008

www.cushmanwakefield.com

The depiction in the included photograph of any person, entity, sign, logo or property, other than Cushman & Wakefield's (C&W) client and the property offered by C&W, is incidental only, and is not intended to connote any affiliation, connection, association, sponsorship or approval by or between that which is incidentally depicted and C&W or its client. This listing shall not be deemed an offer to lease, sublease or sell such property; and, in the event of any transaction for such property, no commission shall be earned by or payable to any cooperating broker except if otherwise provided pursuant to the express terms, rates and conditions of C&W's agreement with its principal, if, as and when such commission (if any) is actually received from such principal. (A copy of the rates and conditions referred to above with respect to this property is available upon request.)