

OFFICE OR MEDICAL SPACE FOR LEASE



OFFICE/MEDICAL SPACE
5564 Wilson Mills Road
Highland Heights, Ohio

Property Highlights

- Office/medical space available in a great location on the SW corner of Wilson Mills Road & Brainard Road
- 2,600 SF space on the 2nd floor that includes 8 offices with a reception area and an in-suite restroom
- Ample parking
- Signage available facing Wilson Mills Road
- Ideally located down the street from I-271
- Close proximity to local restaurants and shopping centers

Demographics:

Estimated Population	Daytime Employees	Average HH Income
1 Mile: 8,052	1 Mile: 2,103	1 Mile: \$98,485
3 Miles: 73,674	3 Miles: 54,082	3 Miles: \$86,056
5 Miles: 193,501	5 Miles: 103,417	5 Miles: \$84,368



Contact Agent:

Michael J. Hirsch

216.514.1400 x107

mhirsch@kowitzrealstate.com

OFFICE/MEDICAL SPACE PHOTOS

Office or Medical Space
5564 Wilson Mills Road
Highland Heights, Ohio



OFFICE SPACE



RECEPTION AREA

KOWIT & COMPANY
REAL ESTATE GROUP

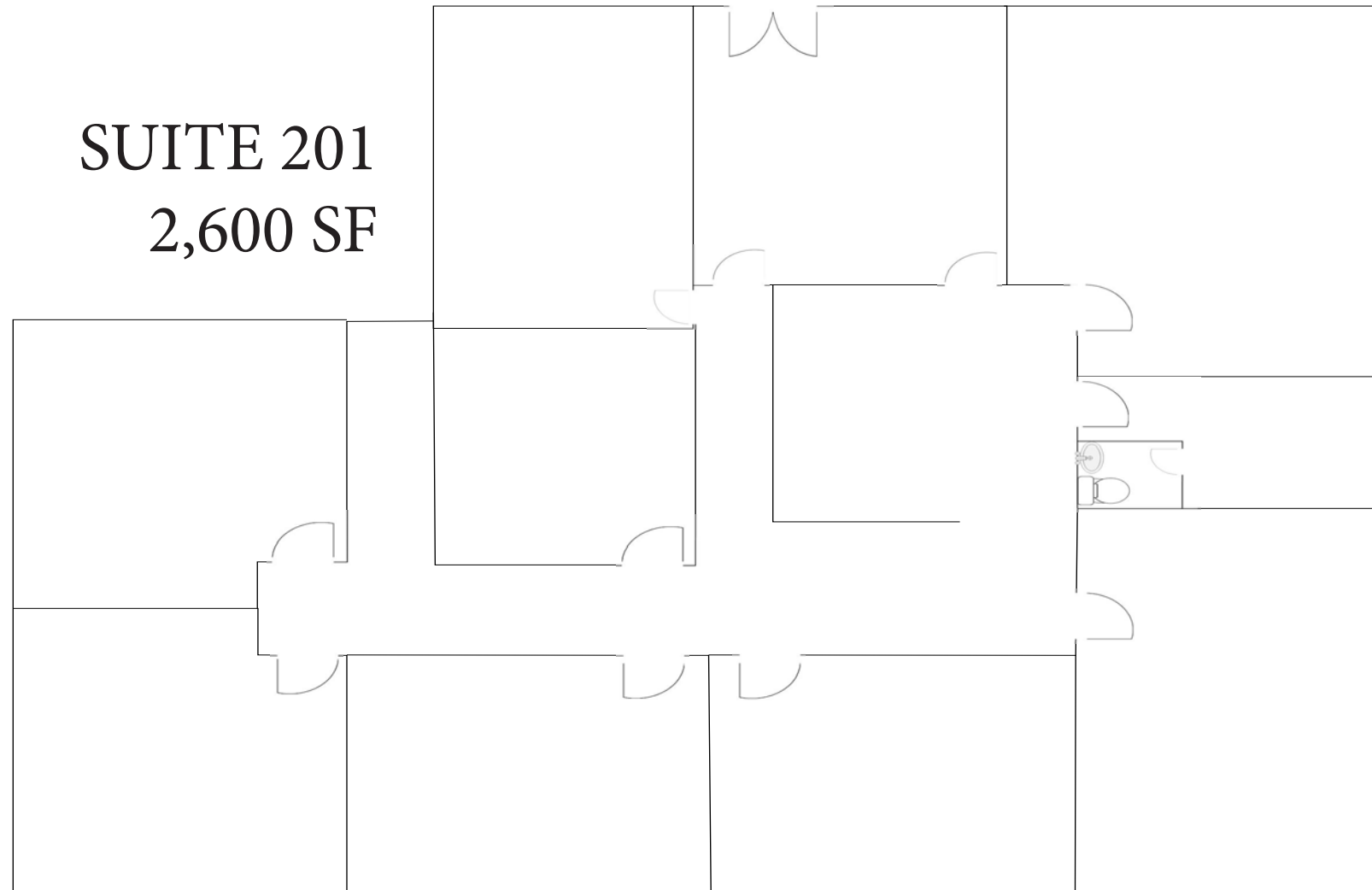
6009 Landerhaven Drive, Suite B
Mayfield Heights, Ohio 44124
P: 216.514.1400 | www.kowitrealestate.com

Contact Agent:

Michael J. Hirsch
216.514.1400 x107
mhirsch@kowitrealestate.com

**OFFICE/MEDICAL SPACE
FLOOR PLAN**

Office or Medical Space
5564 Wilson Mills Road
Highland Heights, Ohio



**SUITE 201
2,600 SF**



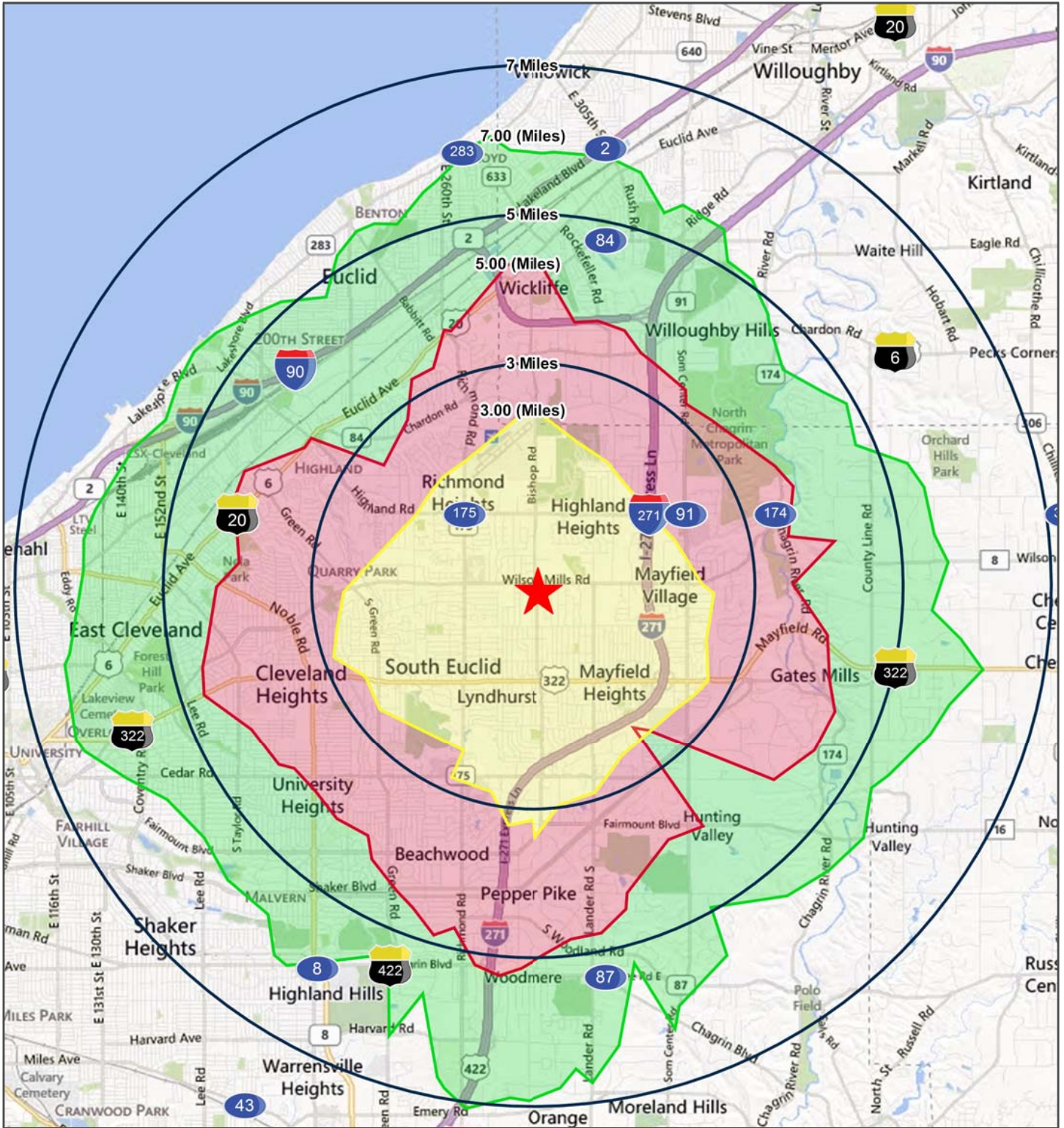
6009 Landerhaven Drive, Suite B
Mayfield Heights, Ohio 44124
P: 216.514.1400 | www.kowitrealestate.com

Contact Agent:

Michael J. Hirsch
216.514.1400 x107
mhirsch@kowitrealestate.com

OFFICE/MEDICAL SPACE AREA MAP

Office or Medical Space
5564 Wilson Mills Road
Highland Heights, Ohio



KOWIT & COMPANY
REAL ESTATE GROUP

6009 Landerhaven Drive, Suite B
Mayfield Heights, Ohio 44124
P: 216.514.1400 | www.kowitrealestate.com

Contact Agent:

Michael J. Hirsch
216.514.1400 x107
mhirsch@kowitrealestate.com

OFFICE/MEDICAL SPACE DEMOGRAPHICS

Office or Medical Space
5564 Wilson Mills Road
Highland Heights, Ohio

5564 Wilson Mills Rd

Highland Heights, OH 44143

		1 mi radius	3 mi radius	5 mi radius
POPULATION	2018 Estimated Population	8,052	73,674	193,501
	2023 Projected Population	7,755	70,745	187,175
	2010 Census Population	8,364	75,567	199,416
	2000 Census Population	9,026	77,724	213,634
	Projected Annual Growth 2018 to 2023	-0.7%	-0.8%	-0.7%
	Historical Annual Growth 2000 to 2018	-0.6%	-0.3%	-0.5%
	2018 Median Age	44.5	44.8	42
HOUSEHOLDS	2018 Estimated Households	3,452	34,921	89,047
	2023 Projected Households	3,368	33,917	87,127
	2010 Census Households	3,392	33,878	86,783
	2000 Census Households	3,457	33,993	90,511
	Projected Annual Growth 2018 to 2023	-0.5%	-0.6%	-0.4%
	Historical Annual Growth 2000 to 2018	-	0.2%	-0.1%
RACE AND ETHNICITY	2018 Estimated White	86.7%	72.6%	56.3%
	2018 Estimated Black or African American	7.5%	18.9%	36.8%
	2018 Estimated Asian or Pacific Islander	3.9%	6.0%	4.0%
	2018 Estimated American Indian or Native Alaskan	0.1%	0.1%	0.1%
	2018 Estimated Other Races	1.8%	2.4%	2.7%
	2018 Estimated Hispanic	1.9%	2.3%	2.1%
INCOME	2018 Estimated Average Household Income	\$98,485	\$86,056	\$84,368
	2018 Estimated Median Household Income	\$82,326	\$66,424	\$63,447
	2018 Estimated Per Capita Income	\$42,262	\$40,947	\$38,996
EDUCATION (AGE 25+)	2018 Estimated Elementary (Grade Level 0 to 8)	1.0%	2.2%	2.0%
	2018 Estimated Some High School (Grade Level 9 to 11)	3.1%	3.7%	5.1%
	2018 Estimated High School Graduate	22.8%	23.1%	23.7%
	2018 Estimated Some College	22.4%	20.6%	22.3%
	2018 Estimated Associates Degree Only	6.3%	6.2%	7.2%
	2018 Estimated Bachelors Degree Only	26.9%	24.9%	21.6%
	2018 Estimated Graduate Degree	17.6%	19.2%	18.2%
BUSINESS	2018 Estimated Total Businesses	271	3,656	7,826
	2018 Estimated Total Employees	2,103	54,082	103,417
	2018 Estimated Employee Population per Business	7.8	14.8	13.2
	2018 Estimated Residential Population per Business	29.7	20.2	24.7



6009 Landerhaven Drive, Suite B
Mayfield Heights, Ohio 44124
P: 216.514.1400 | www.kowitrealestate.com

Contact Agent:

Michael J. Hirsch
216.514.1400 x107
mhirsch@kowitrealestate.com