

275 ON THE PARK OFFICE



SCAN HERE!



EDDIE CHERRY

Phone: 314.647.6611 ext. 113
Eddie@ManorRealEstate.com

BEN CHERRY, CCIM

Phone: 314.647.6611 ext. 115
Ben@ManorRealEstate.com

275 UNION BOULEVARD
ST. LOUIS, MO 63108
3,099 S.F. | \$16.00/S.F. G.

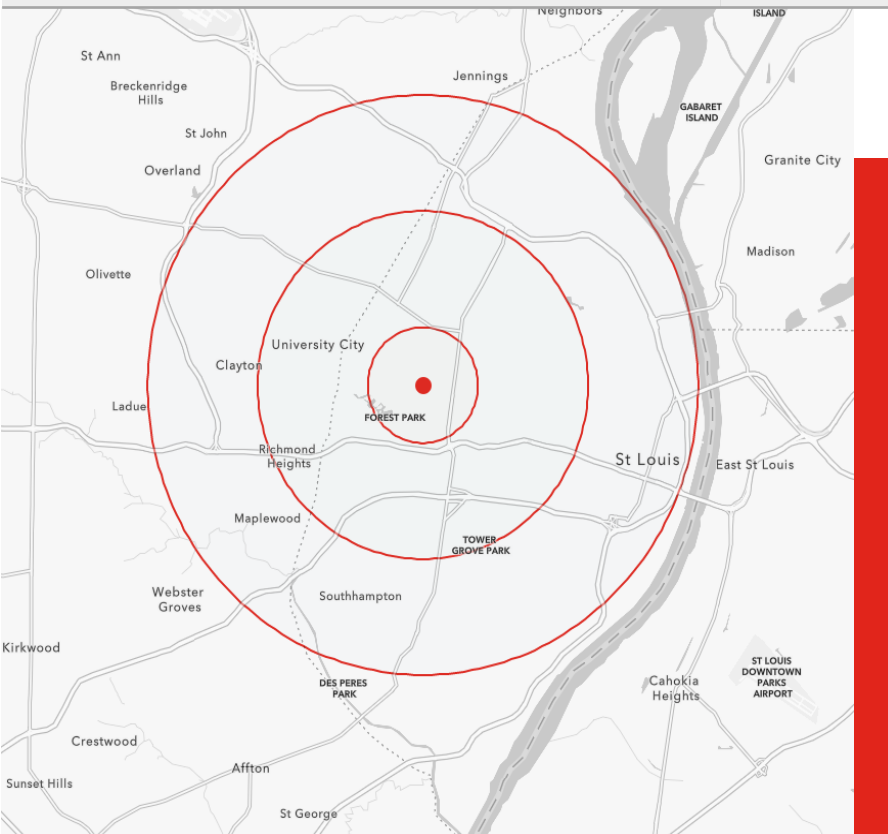
FOR LEASE

PROPERTY INFORMATION



- RARE PENTHOUSE OFFICE SUITE NOW AVAILABLE IN CENTRAL WEST END!
- INCREDIBLE VIEWS OF CWE, FOREST PARK AND CITY
- SPACE INCLUDES PRIVATE OFFICES, MEZZANINE, KITCHENETTE, ETC.
- CREMA CAFE OPENING IN BUILDING SUMMER OF 2023
- 275 ON THE PARK FEATURES 3 HISTORIC FORMER HIGH-RISE HOTELS (THE WESTMORELAND, CONGRESS & SENATE)
- UNDERGOING A \$20M+ RENOVATION TO MODERNIZE THE BUILDING(S)

DEMOGRAPHICS	1 MILE	3 MILES	5 MILES
POPULATION	16,646	139,425	373,299
HOUSEHOLDS	9,424	65,428	177,342
AVERAGE HH INCOME	\$103,160	\$87,595	\$87,166



SCAN HERE!



EDDIE CHERRY
 Phone: 314.647.6611 ext. 113
Eddie@ManorRealEstate.com

BEN CHERRY, CCIM
 Phone: 314.647.6611 ext. 115
Ben@ManorRealEstate.com

275 UNION BOULEVARD
ST. LOUIS, MO 63108
3,099 S.F. | \$16.00/S.F. G.

SITE PLAN



SCAN HERE!



EDDIE CHERRY

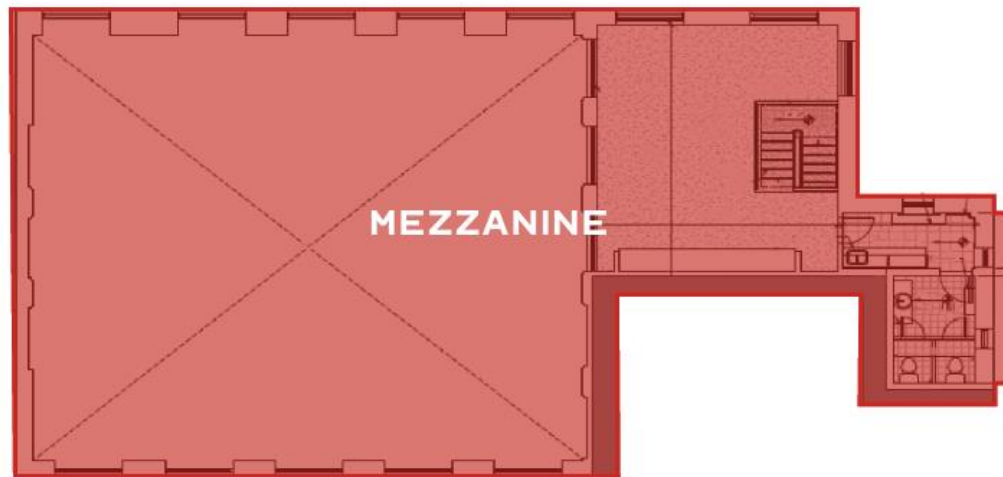
Phone: 314.647.6611 ext. 113
Eddie@ManorRealEstate.com

BEN CHERRY, CCIM

Phone: 314.647.6611 ext. 115
Ben@ManorRealEstate.com

275 UNION BOULEVARD
ST. LOUIS, MO 63108
3,099 S.F. | \$16.00/S.F. G.

LEASE PLAN



SCAN HERE!



EDDIE CHERRY

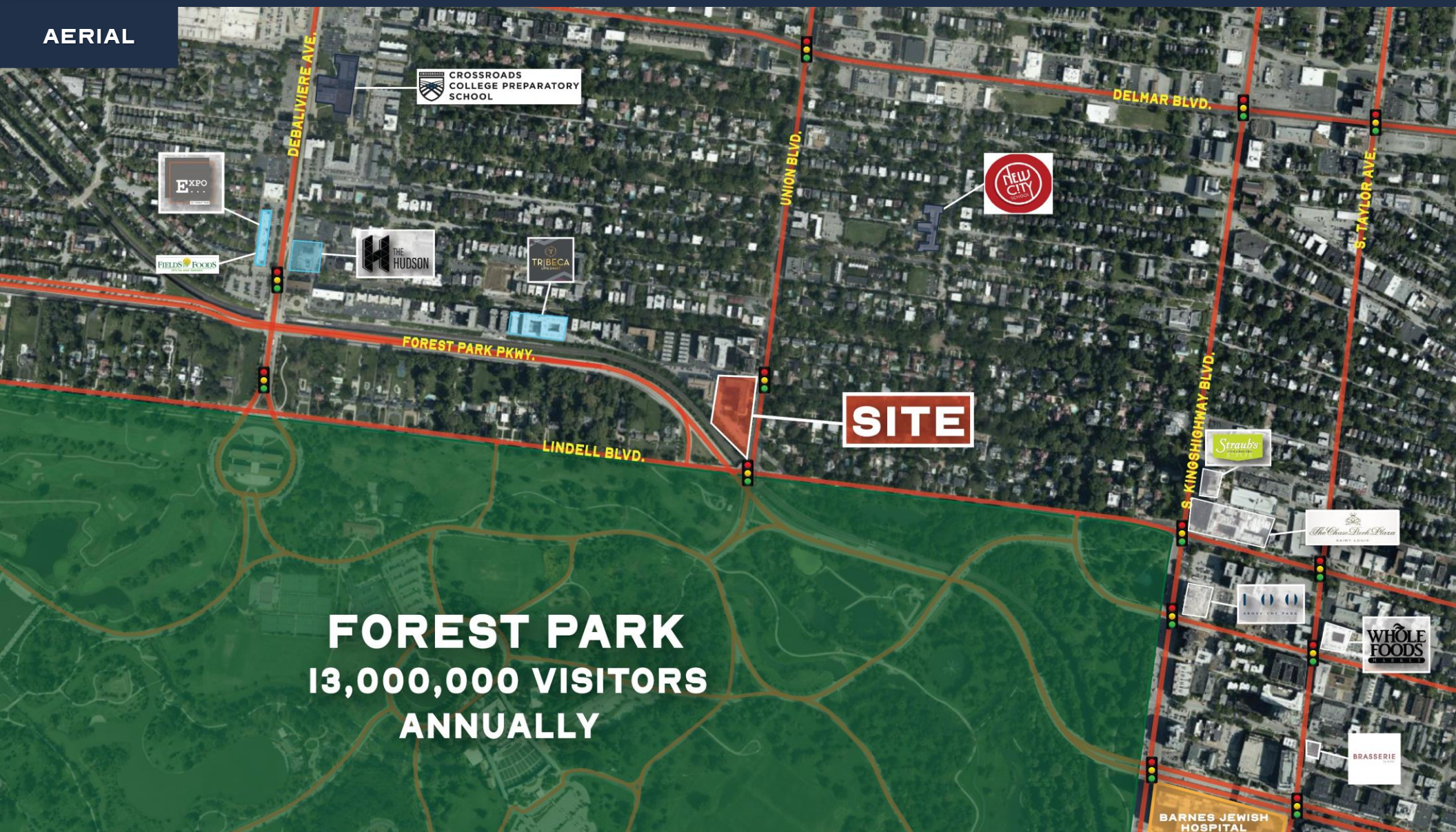
Phone: 314.647.6611 ext. 113
Eddie@ManorRealEstate.com

BEN CHERRY, CCIM

Phone: 314.647.6611 ext. 115
Ben@ManorRealEstate.com

275 UNION BOULEVARD
ST. LOUIS, MO 63108
3,099 S.F. | \$16.00/S.F. G.

AERIAL



FOREST PARK
13,000,000 VISITORS
ANNUALLY

SCAN HERE!



EDDIE CHERRY

Phone: 314.647.6611 ext. 113
Eddie@ManorRealEstate.com

BEN CHERRY, CCIM

Phone: 314.647.6611 ext. 115
Ben@ManorRealEstate.com

275 UNION BOULEVARD
ST. LOUIS, MO 63108
3,099 S.F. | \$16.00/S.F. G.