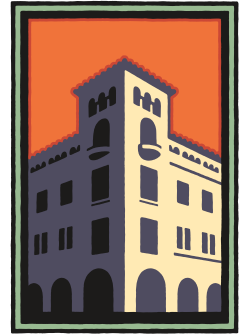


FOR LEASE

381-395 California Ave, Palo Alto, CA



**PREMIER
PROPERTIES**
COMMERCIAL
REAL ESTATE



RETAIL, RESTAURANT, PERSONAL SERVICES

Excellent Palo Alto Corner Location (California Avenue Business District)

±5,130 Sq. Ft. (Divisible) - Available Immediately

BRAD EHIKIAN
Partner

Phone: 650.618.3001

brad.ehikian@prprop.com
dre license #01736391

JON GOLDMAN
Partner

Phone: 650.618.3003

jon.goldman@prprop.com
dre license #01295503

JESSE EBNER
Associate

Phone: 650.618.3017

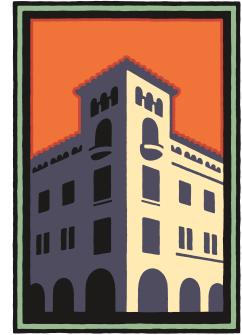
jesse.ebner@prprop.com
dre license #02055989

FOR PROPERTY DETAILS AND MORE LISTINGS

PremierPaloAlto.com

FOR LEASE

381-395 California Ave, Palo Alto, CA



**PREMIER
PROPERTIES**
COMMERCIAL
REAL ESTATE

PROPERTY DESCRIPTION

- Excellent Palo Alto Corner Location in the California Avenue Business District
- Demolition Plans Under Way for Open Layout
- Located on the Ground Floor at the Hotel California (Palo Alto)
- Outdoor Seating Opportunities
- Large Storefront Windows
- Prominent Signage Opportunities
- Walking Distance to Caltrain & Stanford Research Park
- Surrounded by Free Street Parking & Public Parking Lots



BRAD EHIKIAN
Partner

Phone: 650.618.3001
brad.ehikian@prprop.com
dre license #01736391

JON GOLDMAN
Partner

Phone: 650.618.3003
jon.goldman@prprop.com
dre license #01295503

JESSE EBNER
Associate

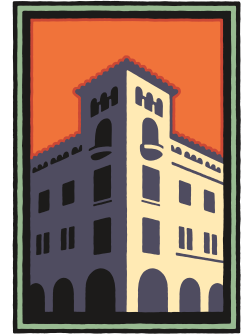
Phone: 650.618.3017
jesse.ebner@prprop.com
dre license #02055989

FOR PROPERTY DETAILS AND MORE LISTINGS

PremierPaloAlto.com

FOR LEASE

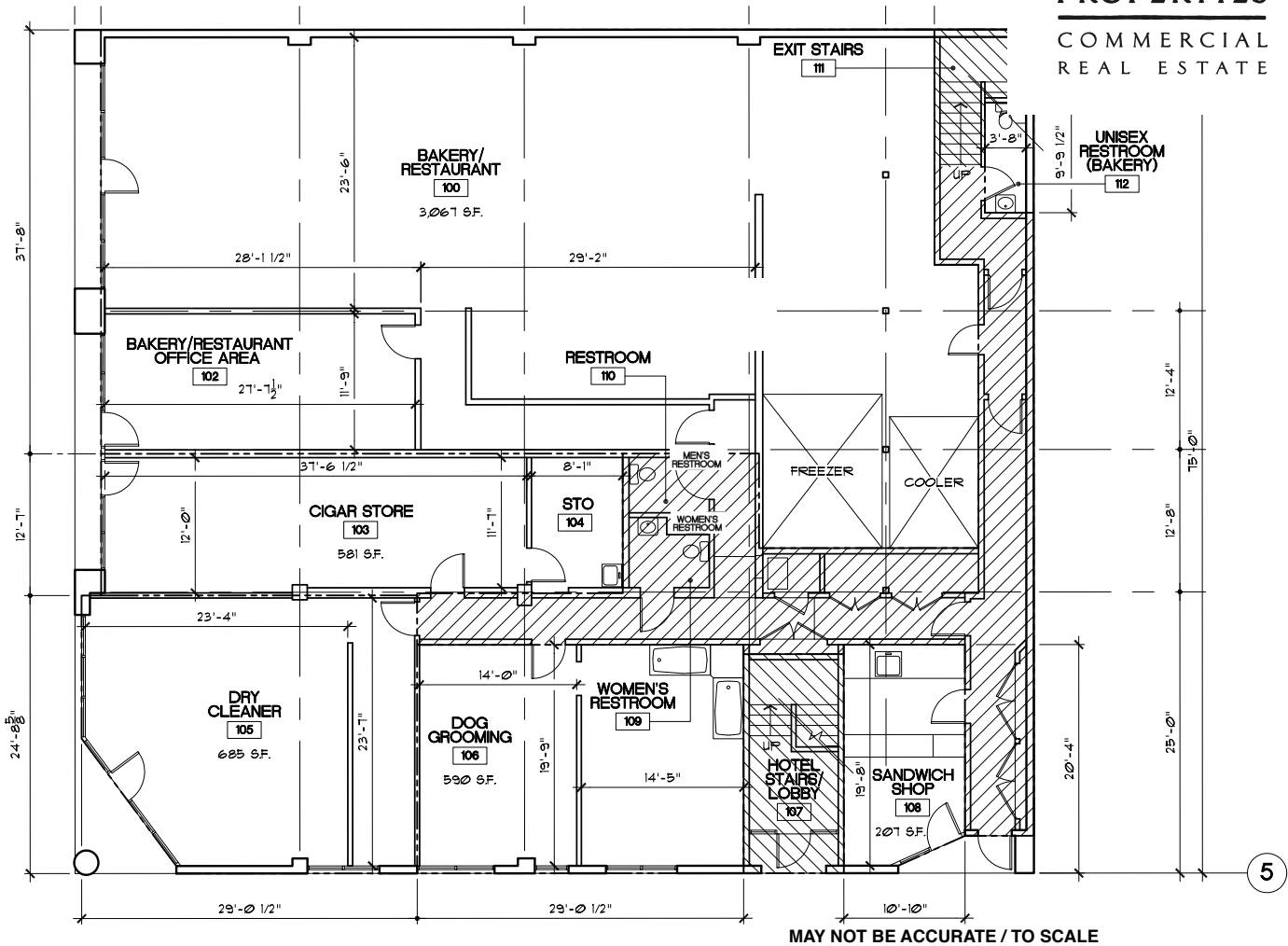
381-395 California Ave, Palo Alto, CA



**PREMIER
PROPERTIES**
COMMERCIAL
REAL ESTATE

FLOOR PLAN

CALIFORNIA AVENUE



ASH STREET

BRAD EHIKAN
Partner

Phone: 650.618.3001
brad.ehikian@prprop.com
dre license #01736391

JON GOLDMAN
Partner

Phone: 650.618.3003
jon.goldman@prprop.com
dre license #01295503

JESSE EBNER
Associate

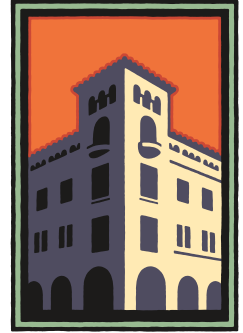
Phone: 650.618.3017
jesse.ebner@prprop.com
dre license #02055989

FOR PROPERTY DETAILS AND MORE LISTINGS

PremierPaloAlto.com

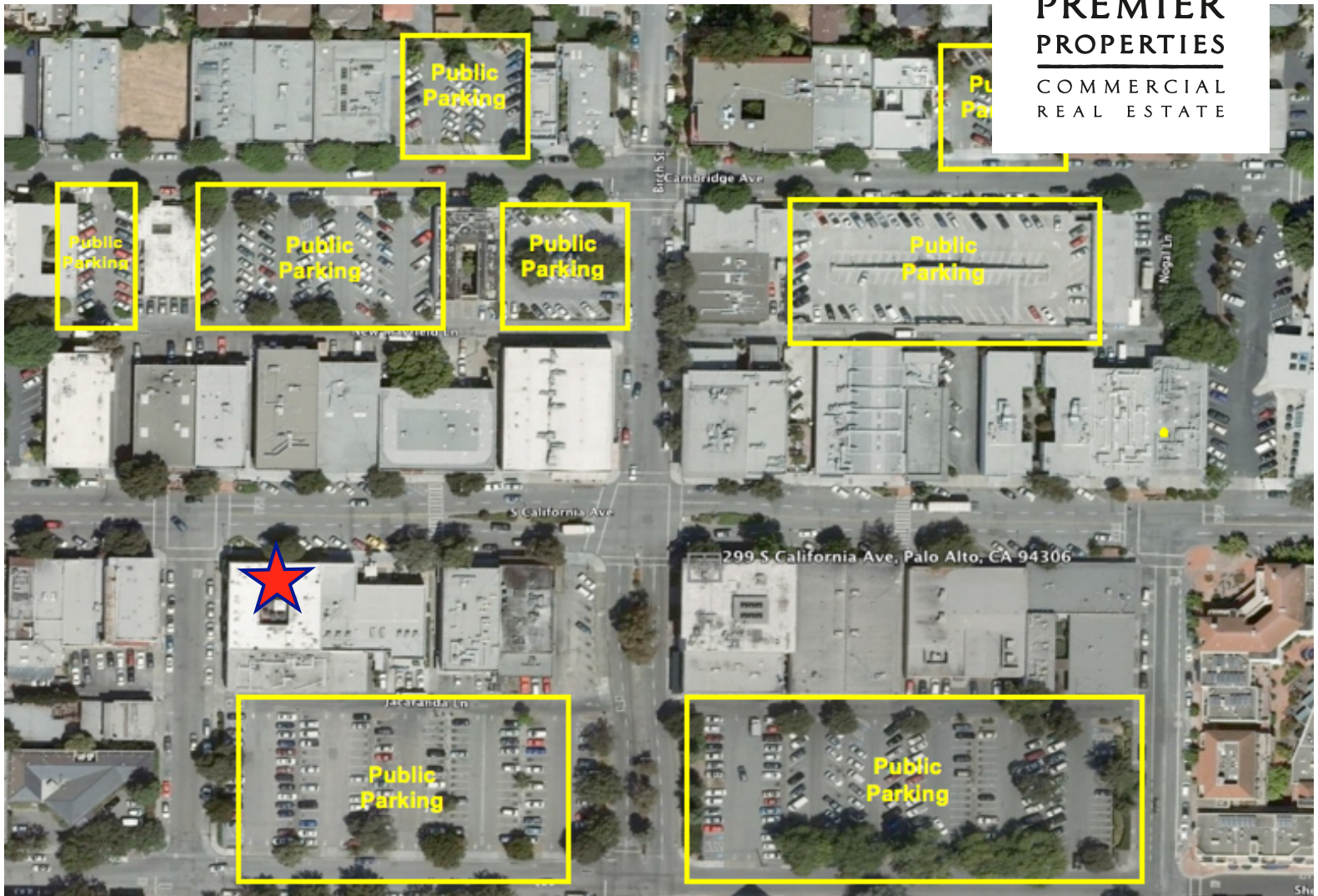
FOR LEASE

381-395 California Ave, Palo Alto, CA



**PREMIER
PROPERTIES**
COMMERCIAL
REAL ESTATE

PUBLIC PARKING MAP



Neither the property owner nor Premier Property Management make any representation or warranty with regard to the information contained within this advertising flyer and the information contained herein should not be relied upon for validity, accuracy, or completeness. Prior to submitting an offer, prospective purchasers or tenants should perform their own due diligence including consultation with their legal and tax counsel in order to arrive at an independent evaluation of the property.

BRAD EHIKIAN
Partner

Phone: 650.618.3001
brad.ehikian@prprop.com
dre license #01736391

JON GOLDMAN
Partner

Phone: 650.618.3003
jon.goldman@prprop.com
dre license #01295503

JESSE EBNER
Associate

Phone: 650.618.3017
jesse.ebner@prprop.com
dre license #02055989

FOR PROPERTY DETAILS AND MORE LISTINGS

PremierPaloAlto.com