

5,703 SF - FOR LEASE

PLAZA LAS PALMAS

HIGH END BUILT OUT GROCERY STORE



NEC 1-15 & WEST VALLEY PARKWAY, ESCONDIDO

Property Info

Plaza Las Palmas is approximately 126,400 square feet and has great freeway access and prime street visibility. The shopping center is located in a major retail hub that provides a regional draw (Michael's, Barnes and Noble, Chili's, Olive Garden, Target, TJ Maxx, Toys R Us, Pier 1 and Cost Plus all in the immediate area.)



Prime access to I-15
278,068 Cars Per Day



Strong national tenants



Great street visibility

CURRENT
TENANTS



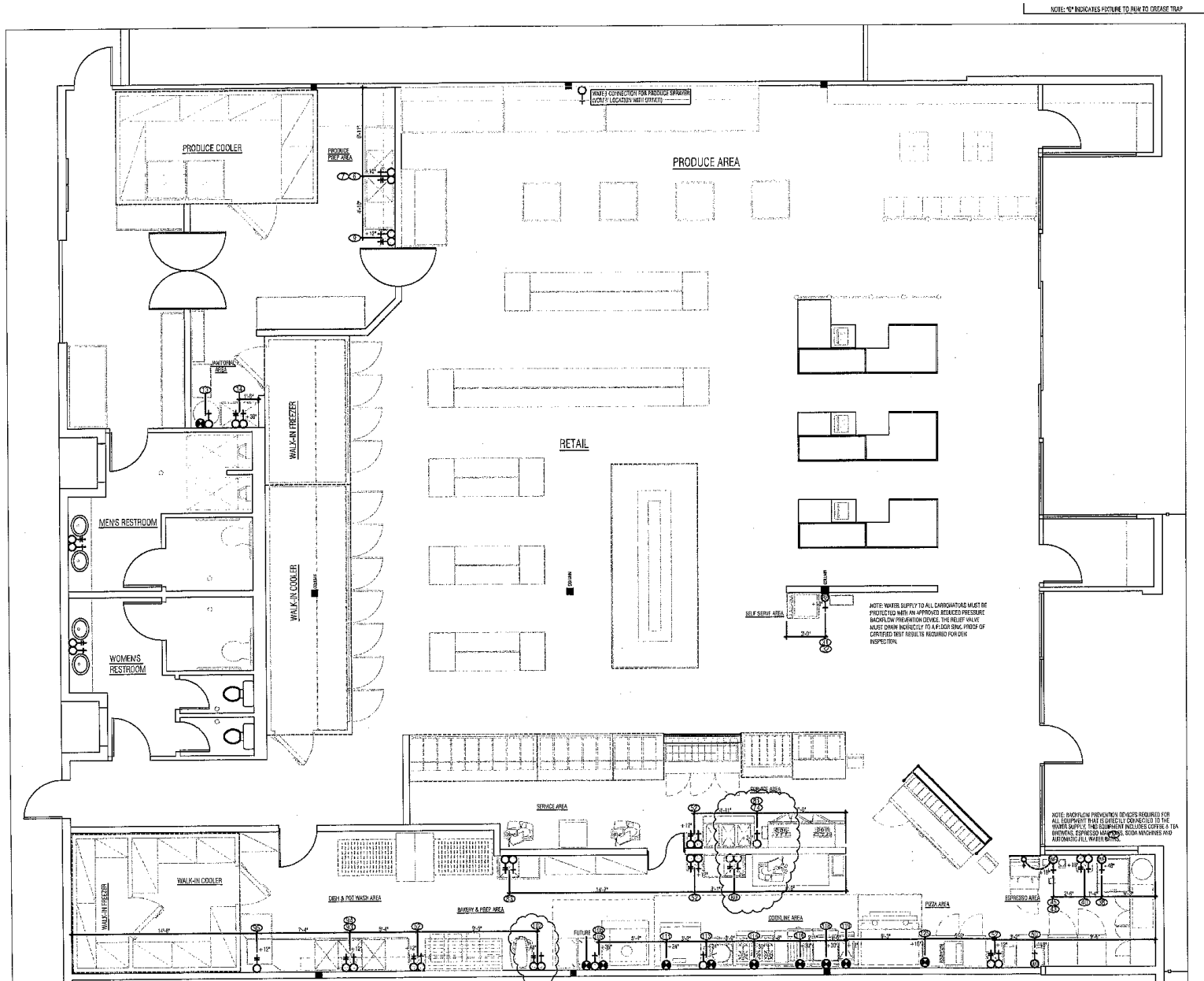


Tenant Info



SUITE	TENANT
1138	Pacific Sales
1134	Plato's Closet
1126	Chuck E Cheese
1118	Available - 3,025 SF
1114	Famlycare Dental
1110	Available - 1,450 SF
1106	Boot Barn
1066	Golf Mart
1054	AVAILABLE - 5,703 SF BUILT OUT GROCERY STORE
1044	Rock n' Jenny's Italian Subs
1036	SportsClips
1032	Surf Brothers Teriyaki
1028	Friar Tux Shop
1024	Available - 912 SF
1004	Destination XL
1000	Petco
982	Salon 714
978	Selebrity Nails & Spa
970	Postal Annex
962	California Coast Credit Union
960	Heritage Escrow

Floor Plan





Demographics

(Full demographic report available upon request.)

	1 MILE	3 MILES	5 MILES
POPULATION			
2016 Population	13,186	137,780	223,150
2021 Population	13,863	145,221	236,966
2010 Population	12,444	129,616	207,234
2000 Population	12,294	121,470	180,744
Percent Pop Change: 2010 to 2016	5.96%	6.30%	7.68%
Percent Pop Change: 2015 to 2021	5.13%	5.40%	6.19%
HOUSEHOLDS			
2016 Households	4,395	43,452	70,989
2021 Households	4,658	45,919	75,293
2010 Households	4,075	40,711	66,273
2000 Households	4,038	39,322	59,822
Percent HH Change: 2010 to 2016	7.86%	6.73%	7.12%
Percent HH Change: 2016 to 2021	5.96%	5.68%	6.06%
Average Household Size	3.00	3.11	3.09
HOUSEHOLD INCOME			
2000 Average Household Income	\$44,611	\$54,148	\$60,221
2016 Average Household Income	\$61,969	\$67,317	\$74,297
2021 Average Household Income	\$68,147	\$73,163	\$80,245
2000 Median Household Income	\$33,440	\$41,947	\$45,922
2016 Median Household Income	\$43,960	\$47,837	\$51,886
2021 Median Household Income	\$47,980	\$51,217	\$55,567
2016 Per Capita Income	\$20,656	\$21,230	\$23,635
HOUSING UNITS			
2016 Housing Units	4,641	45,959	74,819
Occupied Units	4,395	43,452	70,989
Vacant Housing Units	246	2,507	3,830
2016 Owner-Occupied Housing Units	1,589	21,128	39,889
2016 Renter-Occupied Housing Units	2,806	22,323	31,100
2016 Median Home Value	\$367,211	\$384,826	\$426,500
2016 Average Home Value	\$404,930	\$450,957	\$484,064

FOR MORE INFO, CONTACT

BRAD JONES

First Vice President

+1 858 646 4725

brad.jones@cbre.com

Lic. 01211248



© 2018 CBRE, Inc. All rights reserved. This information has been obtained from sources believed reliable, but has not been verified for accuracy or completeness. Any projections, opinions, or estimates are subject to uncertainty. The information may not represent the current or future performance of the property. You and your advisors should conduct a careful, independent investigation of the property and verify all information. Any reliance on this information is solely at your own risk. CBRE and the CBRE logo are service marks of CBRE, Inc. and/or its affiliated or related companies in the United States and other countries. All other marks displayed on this document are the property of their respective owners. Photos herein are the property of their respective owners and use of these images without the express written consent of the owner is prohibited.

CBRE

CBRE, INC. Broker Lic. 00409987