

455 JEFFERSON



LARGE BLOCK AVAILABILITY IN BUSHWICK

AREA

125,000 TOTAL RSF ON 6 FLOORS

POSSESSION

IMMEDIATE

ASKING RENT

UPON REQUEST

TERM

5-10 YEARS



For more information, please contact:

JOSEPH CIRONE
718 606 7038
joseph.cirone@cushwake.com

PATRICK J. DUGAN
718 606 7079
patrick.dugan@cushwake.com

REMY LIEBERSOHN
212 841 7638
remy.liebersohn@cushwake.com



A full commission computed and earned in accordance with the rates and conditions of our agency agreement with our principal, when received from our principal, will be paid to the cooperating broker who consummates a lease which is unconditionally executed and delivered by and between lessor and lessee (a copy of the rates and conditions referred to above is available upon request).

455 JEFFERSON

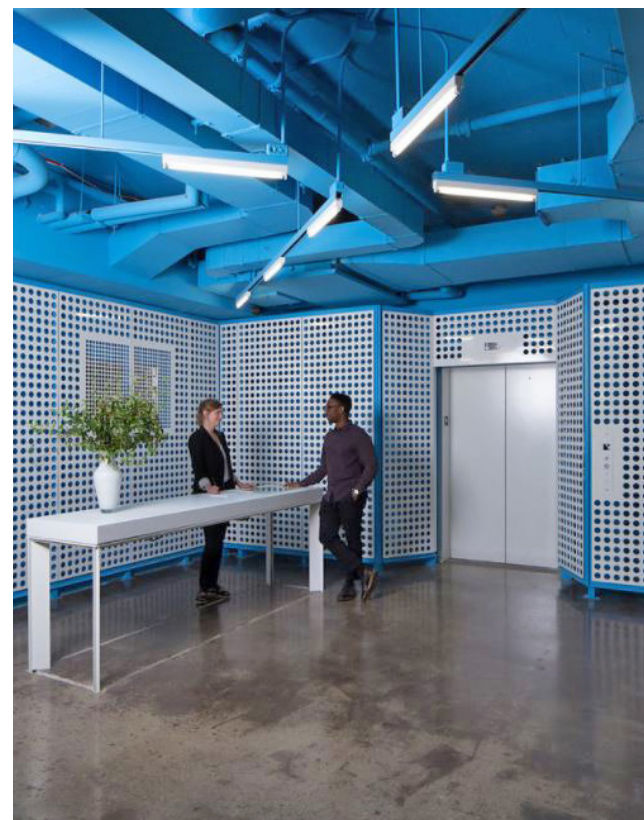
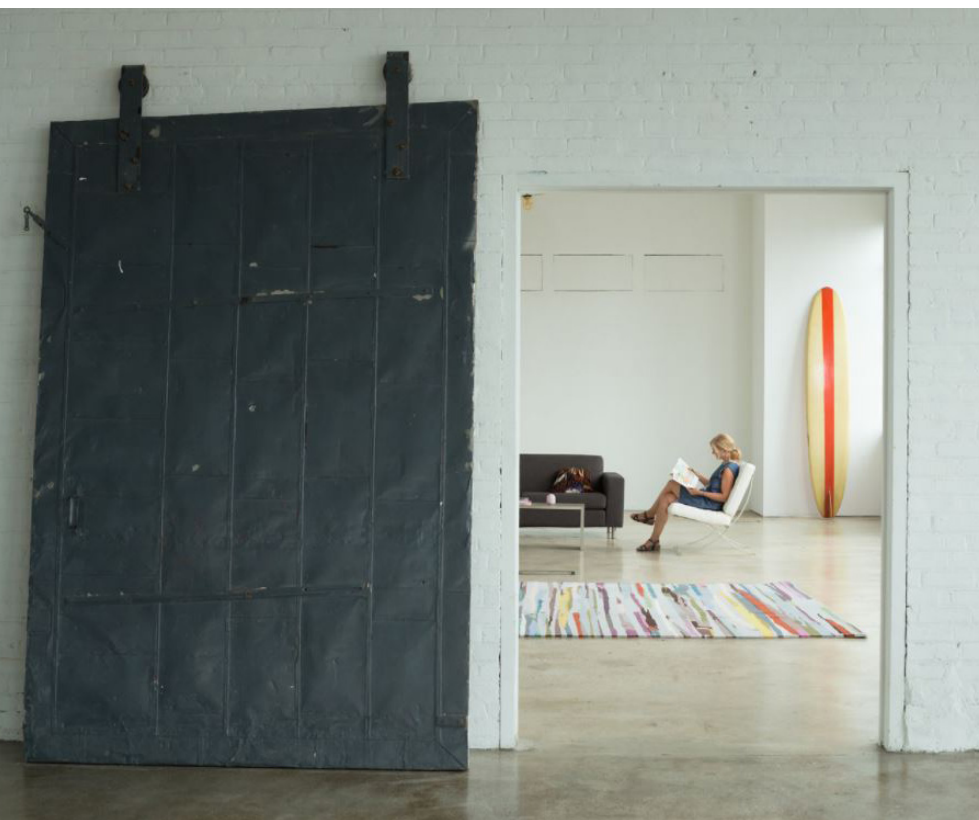


PROPERTY HIGHLIGHTS

- Central Bushwick Location
- Recently underwent major building wide renovations including new lobby, elevators, windows, and bathrooms
- 21,500 rsf floor plates
- Ceiling heights of 11'-14'
- Pre-Built units available
- Unobstructed views of Midtown & Downtown Manhattan
- Private Rooftop Access Available
- Located near the L train at Jefferson Street



PROPERTY PHOTOS



FLOOR PLANS

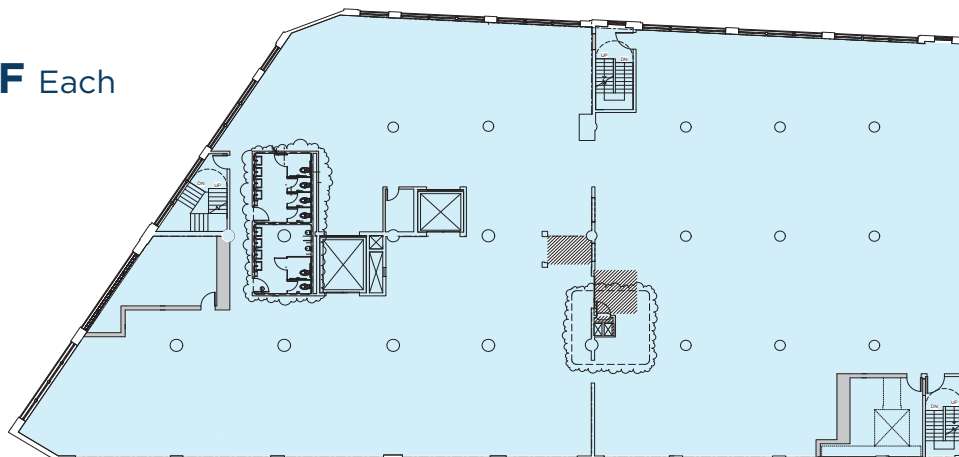
1ST FLOOR
12,345 SF



2ND FLOOR
Unit A: 2,540 RSF
Unit B: 4,142 RSF
Unit C: 9,486 RSF



FLOORS 3-6
21,500 RSF Each



AMENITIES MAP



NEIGHBORING TENANTS

1. Heavy Woods
2. Left Hand Path
3. The Bodega
4. Pearl's Social & Billy Club
5. Montana's Trail House
6. The Cobra Club
7. The House of Yes
8. The Rookery
9. Bunker Vietnamese
10. Bushwick Starr
11. Urban Jungle

For more information, please contact:

JOSEPH CIRONE
718 606 7038
joseph.cirone@cushwake.com

PATRICK J. DUGAN
718 606 7079
patrick.dugan@cushwake.com

REMY LIEBERSOHN
212 841 7638
remy.liebersohn@cushwake.com