

Publix #1465 - Shoppes of Cutler Bay
 20901 Old Cutler Road
 Cutler Bay, FL 33189
 Lat 25.574, Long -80.343

DEMOGRAPHICS

	1-Mile Radius	3-Mile Radius	5-Mile Radius
2020 Population	22,881	112,779	201,961
2025 Population	23,748	119,601	214,674
2020 Average HH Income	\$83,174	\$75,117	\$84,684
2020 Median HH Income	\$66,566	\$57,066	\$61,849

PROPERTY HIGHLIGHTS

- Publix-Anchored Center Under Construction
- Corner of Old Cutler Road and Marlin Road
- Inline Bays Available from 1,250 SF+
- High Visibility Endcap Available - 2,000 SF+
- Traffic Count: 20,940 VPD

For a complete directory of our listings visit our website:
www.crossmanco.com

No warranty expressed or implied has been made to the accuracy of the information provided herein, no liability assumed for error omission
 Licensed Real Estate Broker

Leasing Contact:
Fernando Espino
 305.632.1809
 fespino@crossmanco.com



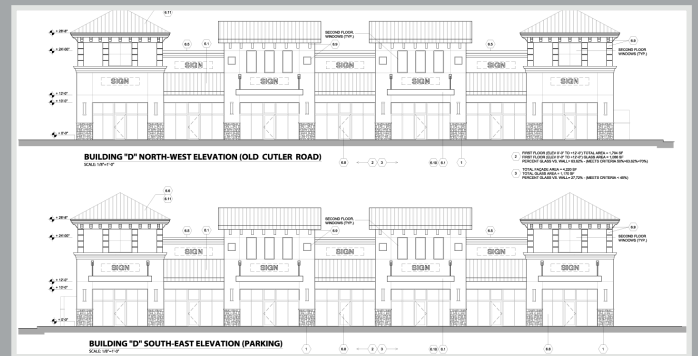
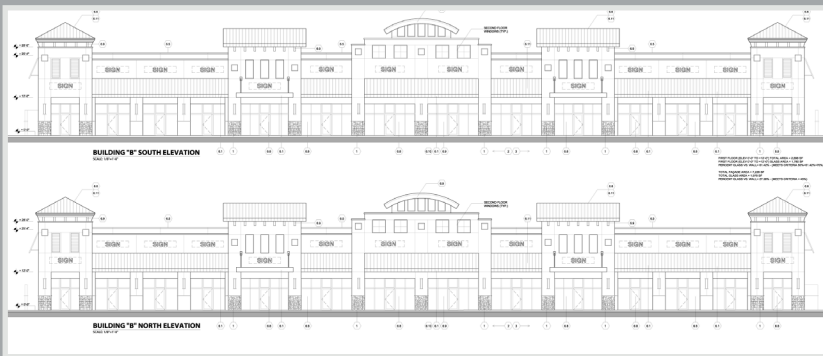
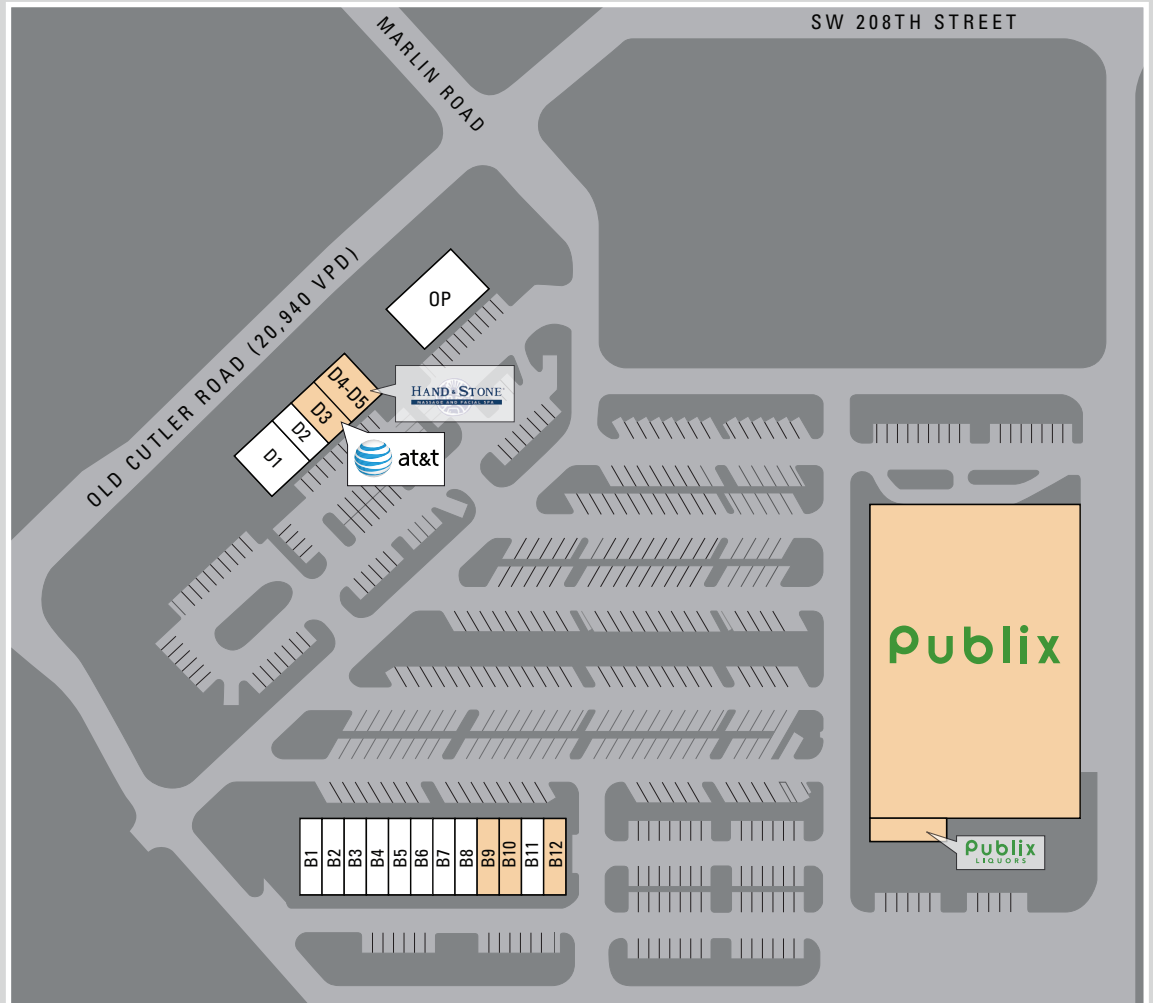
Publix #1465 - Shoppes of Cutler Bay

20901 Old Cutler Road
Cutler Bay, FL 33189
Lat 25.574, Long -80.343

SITE PLAN

STE	TENANT	SIZE
	Publix	53,785
	Publix Liquor	1,400
B1	AVAILABLE	1,400
B2	AVAILABLE	1,400
B3	AVAILABLE	1,400
B4	AVAILALBE	1,400
B5	AVAILABLE	1,400
B6	AVAILABLE	1,400
B7	AVAILABLE	1,400
B8	AVAILABLE	1,400
B9	Design Nails	1,400
B10	Crafty Boil	1,400
B11	AVAILABLE	1,400
B12	Orthodontist	1,400
D1	AVAILABLE	2,000
D2	AVAILABLE	1,250
D3	AT&T	1,250
D4-D5	Hand & Stone	2,500
OP	AVAILABLE	4,000
TOTAL		82,985

AVAILABLE
 NOT OWNED



For a complete directory of our listings visit our website:
www.crossmanco.com

No warranty expressed or implied has been made to the accuracy of the information provided herein, no liability assumed for error omission
Licensed Real Estate Broker

Leasing Contact:
Fernando Espino
305.632.1809
fespino@crossmanco.com

