

INTERSTATE BUSINESS PARK

±4,115 SF - ±20,249 SF FOR LEASE

24305 PRIELIPP ROAD AND 36595 - 36625 KEVIN ROAD - WILDOMAR, CA



BUILDING HIGHLIGHTS:

- ◆ ±229,990 SF, Four Building Business Park
- ◆ Outstanding 1-15 Freeway Frontage & Visibility
- ◆ 160,000 Cars per Day (I-15 & Clinton Keith Rd.)
- ◆ Dock High Loading on Buildings B, C & part of D and Ground Level Loading on all Suites
- ◆ Upgraded Power (200 – 1,600 Amps)
- ◆ Upgraded Offices
- ◆ 21' to 27' Warehouse Clear Height
- ◆ ESFR Fire Sprinkler System

ALISA A. LOVAS

951.445.4524

alovas@lee-associates.com

LICENSE #01200336

 **LEE &
ASSOCIATES**
COMMERCIAL REAL ESTATE SERVICES

25240 Hancock Avenue, Suite 100 | Murrieta, CA 92562
www.lee-associates.com | Corp ID # 01048055

No warranty or representation has been made to the accuracy of the foregoing information. Terms of sale or lease and availability are subject to change or withdrawal without notice. Lee & Associates Commercial Real Estate Services, Inc. - Riverside. 25240 Hancock Avenue, Suite 100 - Murrieta, CA 92562 | Corporate ID# 01048055

INTERSTATE BUSINESS PARK

±4,115 SF - ±20,249 SF FOR LEASE

24305 PRIELIPP ROAD AND 36595 - 36625 KEVIN ROAD - WILDOMAR, CA

24335 PRIELIPP ROAD - BUILDING A

SUITE	BLDG	SQ. FT.	POWER	GRADE LEVEL LOADING	DOCK HIGH LOADING	W/H CLEAR HEIGHT	BUILD-OUT	\$/SF/MONTH (NNN*)
100% Leased								

24305 PRIELIPP ROAD - BUILDING B

SUITE	BLDG	SQ. FT.	POWER	GRADE LEVEL LOADING	DOCK HIGH LOADING	W/H CLEAR HEIGHT	BUILD-OUT	\$/SF/MONTH (NNN*)
102/103	B	13,110	800/277/480	2 (12X14)	4 (9X10)	27'	Reception, 2 private offices & 1 restroom	\$0.80

36595 KEVIN ROAD - BUILDING C

SUITE	BLDG	SQ. FT.	POWER	GRADE LEVEL LOADING	DOCK HIGH LOADING	W/H CLEAR HEIGHT	BUILD-OUT	\$/SF/MONTH (NNN*)
130-132	C	20,249	1,200/120/208	3 (12X14)	5 (9X10)	27'	Reception, 2 private offices & 3 restrooms	\$0.80

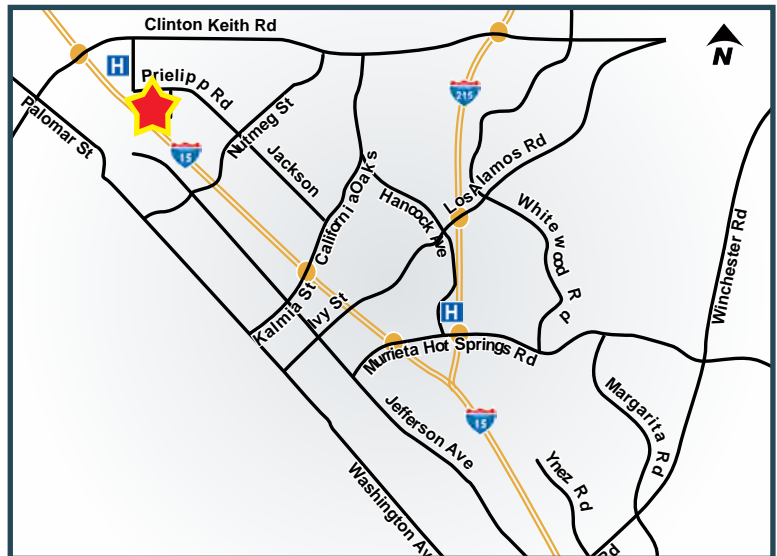
36625 KEVIN ROAD - BUILDING D

SUITE	BLDG	SQ. FT.	POWER	GRADE LEVEL LOADING	DOCK HIGH LOADING	W/H CLEAR HEIGHT	BUILD-OUT	\$/SF/MONTH (NNN*)
153	D	4,115	200 Amps 120/208 Volt	1 (12'X14')	-	27'	Showroom, office & warehouse	\$1.00

*Please note that there is a dock high loading platform at the northwest corner of the rear of Bldg. D which could serve the entire bldg.

Rev. 05/21/18

*NNN \$0.20 PSF



ALISA A. LOVAS

951.445.4524

alovas@lee-associates.com

LICENSE #01200336



25240 Hancock Avenue, Suite 100 | Murrieta, CA 92562
www.lee-associates.com | Corp ID # 01048055

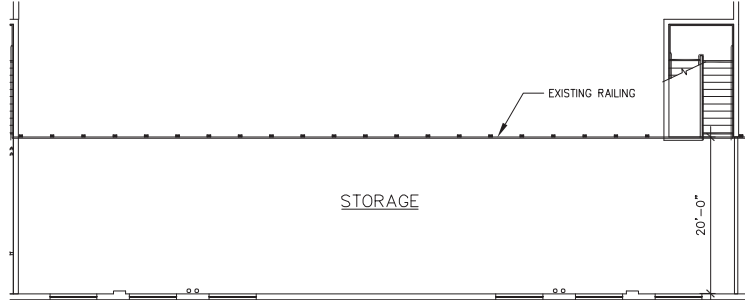
No warranty or representation has been made to the accuracy of the foregoing information. Terms of sale or lease and availability are subject to change or withdrawal without notice. Lee & Associates Commercial Real Estate Services, Inc. - Riverside, 25240 Hancock Avenue, Suite 100 - Murrieta, CA 92562 | Corporate ID# 01048055

INTERSTATE BUSINESS PARK

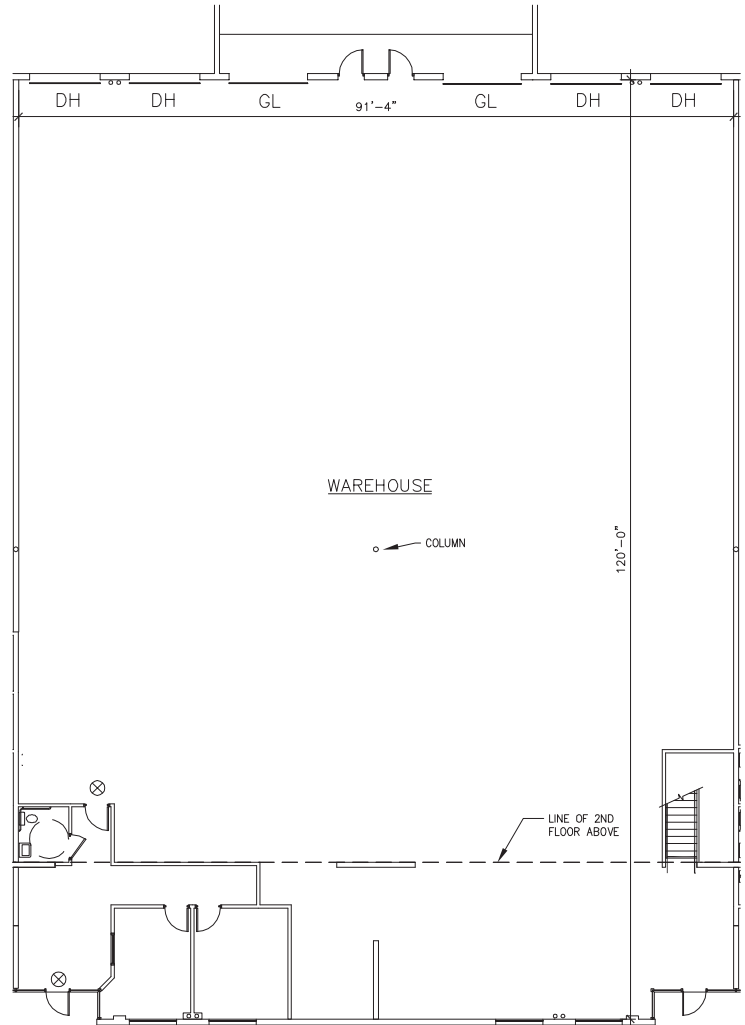
±4,115 SF - ±20,249 SF FOR LEASE

24305 PRIELIPP ROAD AND 36595 - 36625 KEVIN ROAD - WILDOMAR, CA

SUITE 102/103



SUITES 102 AND 103 - 2ND FLOOR EXISTING PLAN
1/16" = 1'-0"



ALISA A. LOVAS

951.445.4524

alovas@lee-associates.com

LICENSE #01200336

 **LEE &
ASSOCIATES**
COMMERCIAL REAL ESTATE SERVICES

25240 Hancock Avenue, Suite 100 | Murrieta, CA 92562
www.lee-associates.com | Corp ID # 01048055

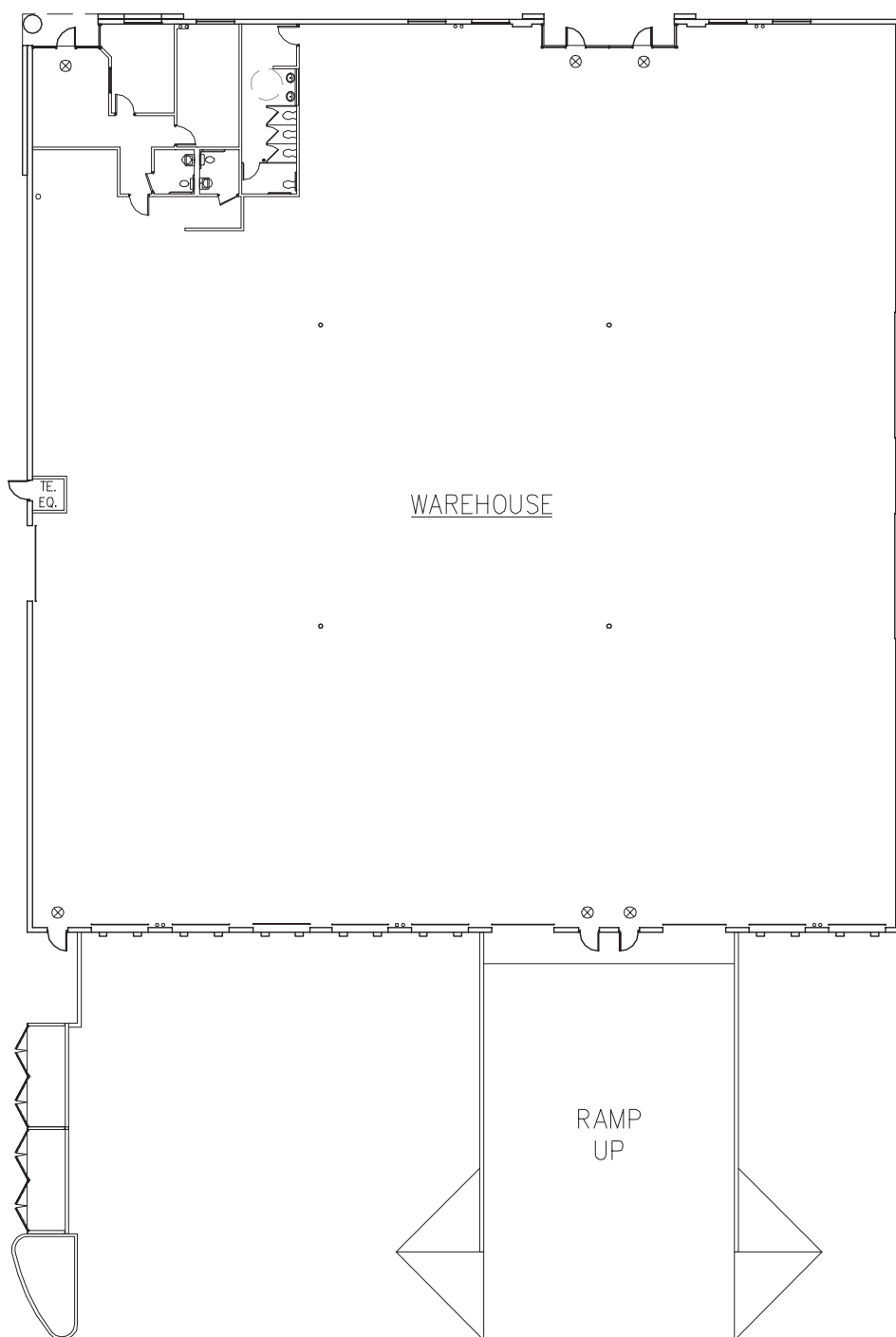
No warranty or representation has been made to the accuracy of the foregoing information. Terms of sale or lease and availability are subject to change or withdrawal without notice. Lee & Associates Commercial Real Estate Services, Inc. - Riverside. 25240 Hancock Avenue, Suite 100 - Murrieta, CA 92562 | Corporate ID# 01048055

INTERSTATE BUSINESS PARK

±4,115 SF - ±20,249 SF FOR LEASE

24305 PRIELIPP ROAD AND 36595 - 36625 KEVIN ROAD - WILDOMAR, CA

SUITE 130-132



ALISA A. LOVAS

951.445.4524

alovas@lee-associates.com

LICENSE #01200336



25240 Hancock Avenue, Suite 100 | Murrieta, CA 92562
www.lee-associates.com | Corp ID # 01048055

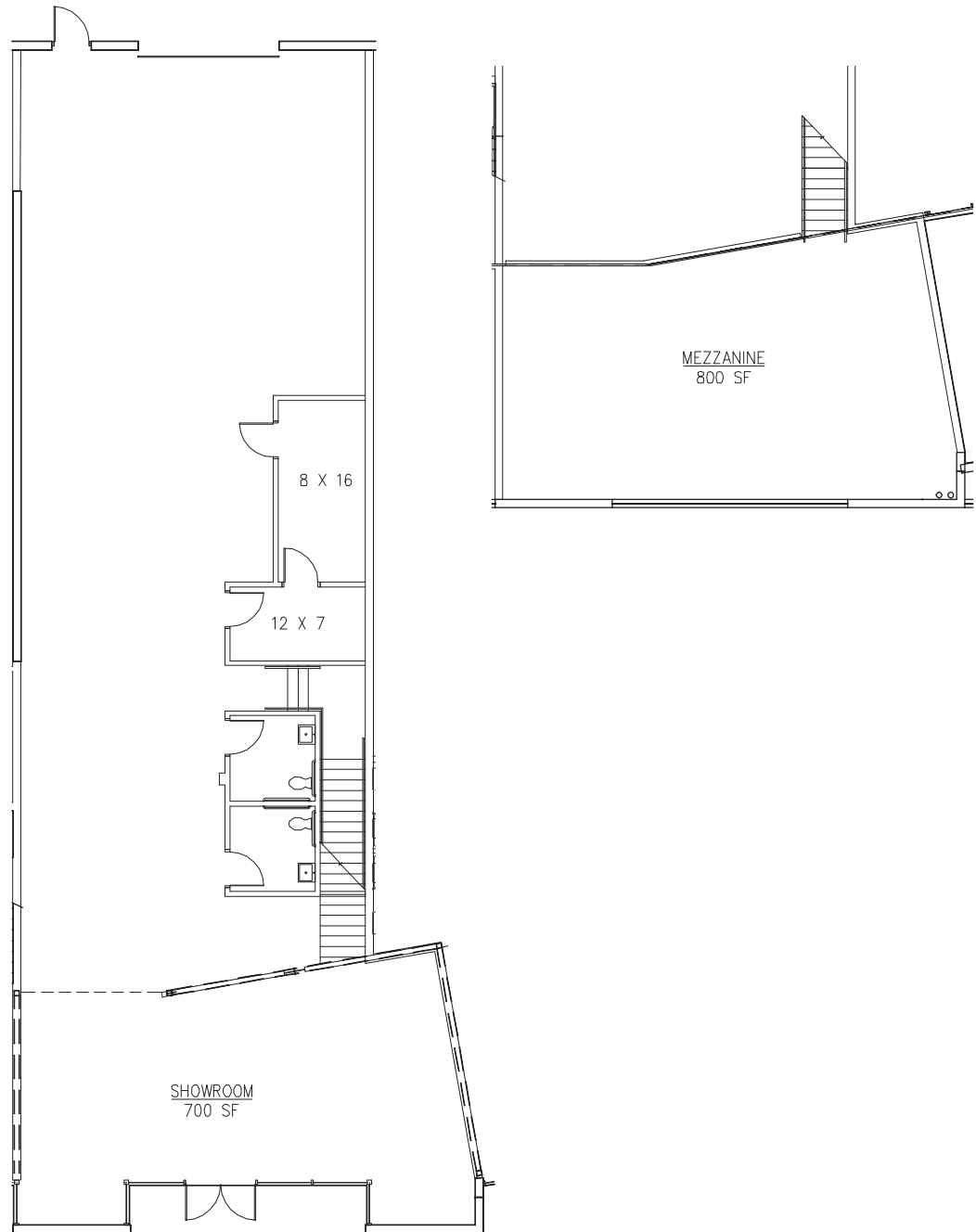
No warranty or representation has been made to the accuracy of the foregoing information. Terms of sale or lease and availability are subject to change or withdrawal without notice. Lee & Associates Commercial Real Estate Services, Inc. - Riverside. 25240 Hancock Avenue, Suite 100 - Murrieta, CA 92562 | Corporate ID# 01048055

INTERSTATE BUSINESS PARK

±4,115 SF - ±20,249 SF FOR LEASE

24305 PRIELIPP ROAD AND 36595 - 36625 KEVIN ROAD - WILDOMAR, CA

SUITE 153



ALISA A. LOVAS

951.445.4524

alovas@lee-associates.com

LICENSE #01200336



25240 Hancock Avenue, Suite 100 | Murrieta, CA 92562
www.lee-associates.com | Corp ID # 01048055

No warranty or representation has been made to the accuracy of the foregoing information. Terms of sale or lease and availability are subject to change or withdrawal without notice. Lee & Associates Commercial Real Estate Services, Inc. - Riverside, 25240 Hancock Avenue, Suite 100 - Murrieta, CA 92562 | Corporate ID# 01048055