

For Lease

Office Suite

Lease price: \$1,200/ month gross plus utilities



Phillips Avenue Office

423 S. Phillips Avenue, Sioux Falls, SD 57104

Property Features

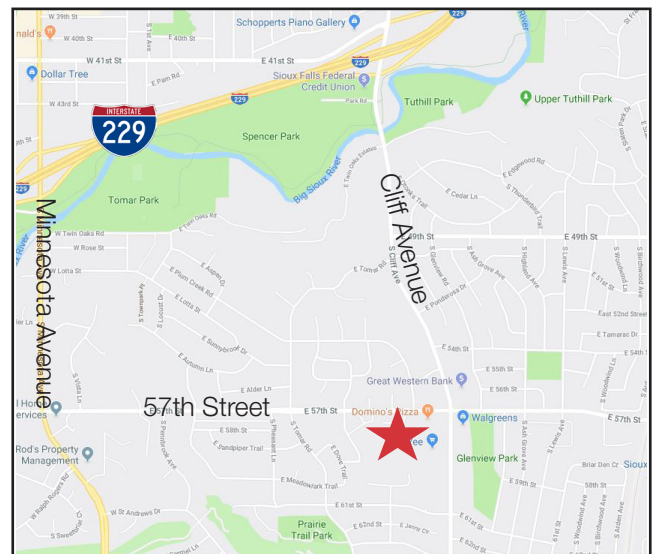
- Upper-level office space
- Suite size: 1,264 sq. ft.
- Four private offices
- Open work area
- Break room with kitchenette and restroom
- Large window overlooking Phillips Avenue
- Two off-street parking spaces
- Entrance from Phillips Avenue

Price

- Lease rate: \$1,200/ month gross plus utilities

Location

- Located on the northwest corner of Phillips Avenue & 12th Street in downtown Sioux Falls
- Area neighbors include: KELO TV, Midwest Communications, Midco
- Close to restaurants and shopping
- Co-tenant: Sushi Masa



Craig Hagen, CCIM, SIOR

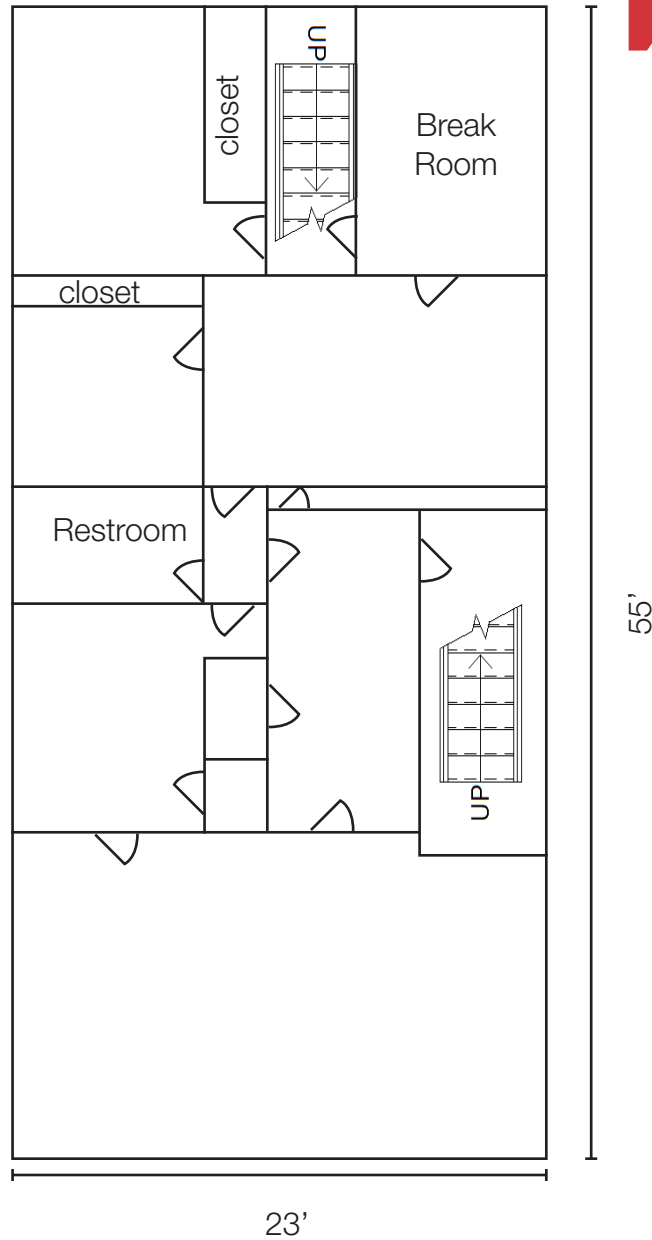
605 444 7115 Office

605 310 4227 Cell

chagen@naisiouxfalls.com

For Lease

Office Suite



Phillips Avenue



For Lease
Office Suite

