

Asking Price:

\$1.6M

Jason Ryals

Executive Director
+1 904 861 1136
jason.ryals@colliers.com

Gina Kline

Retail Associate
+1 904 861 1104
gina.kline@colliers.com

Colliers
76 South Laura Street | Suite 1500
Jacksonville, FL 32202
colliers.com/jacksonville

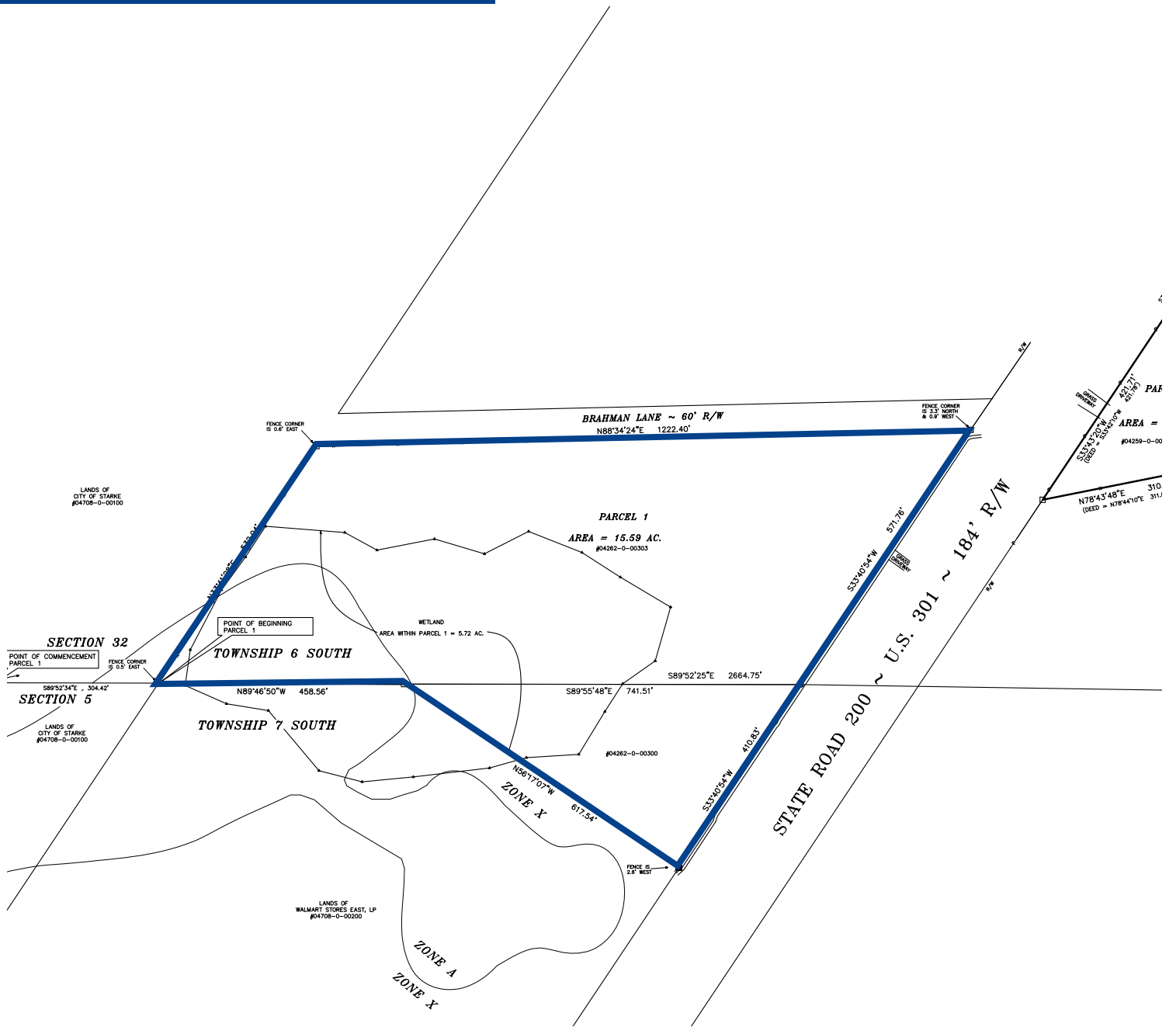
For Sale | 15.5± AC Parcel Adjacent to Walmart

SWC Hwy 301 & SW 143rd St. | Starke, FL 32091

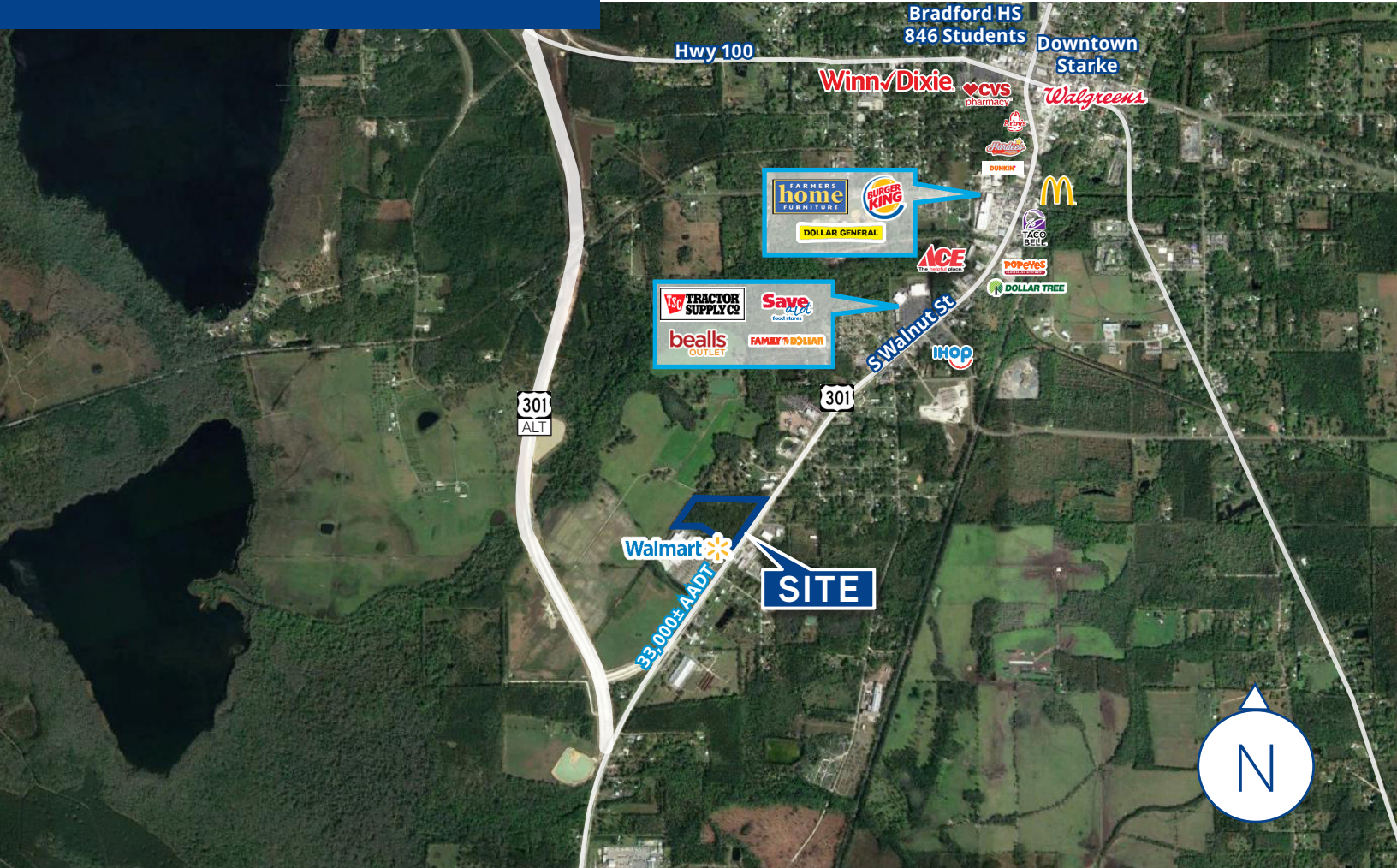
- 15.5± AC (9.9± usable) just north of Walmart Supercenter on US Hwy 301
- 980± frontage feet on US Hwy 301
- Historic downtown Starke is just 2 miles north, Bradford High School is 2.5 miles north with 846 students
- Nearby area retail includes Bealls Outlet, Tractor Supply Co., Family Dollar, Ace Hardware and Dollar Tree
- 33,000± vehicles per day on US Highway 301

Copyright © 2021 Colliers International. Information herein has been obtained from sources deemed reliable, however its accuracy cannot be guaranteed. The user is required to conduct their own due diligence and verification.

Survey



Trade Area



Demographics



Population

3 Mile

7,046

5 Mile

13,640

Bradford County

29,405



Daytime Population

7,726

13,222

24,985



Households

2,693

5,175

10,000



Average HH Income

\$49,392

\$52,868

\$57,075

Source: Esri Business Analyst 2020

Jason Ryals

Executive Director
+1 904 861 1136
jason.ryals@colliers.com

Gina Kline

Retail Associate
+1 904 861 1104
gina.kline@colliers.com

Colliers
76 South Laura Street | Suite 1500
Jacksonville, FL 32202
colliers.com/jacksonville