

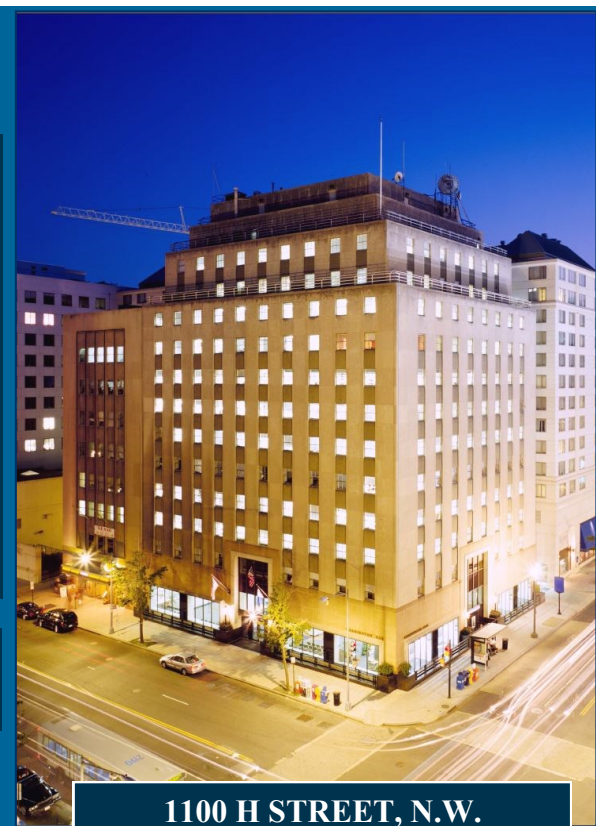
MOVE-IN READY DOWNTOWN CORNER OFFICE

- ⇒ GORGEOUS UPPER LEVEL (10TH FLOOR) OFFICE SUITE WITH AMAZING VIEWS
- ⇒ MODERN AESTHETICS— DARK CHERRY WOOD INSPIRED FLOORING AND OPEN CEILINGS
- ⇒ 2 PRIVATE WINDOWED OFFICES ON THE 11TH STREET WINDOWLINE
- ⇒ 1 WINDOWED CONFERENCE ROOM
- ⇒ KITCHENETTE
- ⇒ LARGE OPEN AREA—PERFECT FOR CUBICLES AND WORKSTATIONS!
- ⇒ RECEPTION
- ⇒ 1 BLOCK FROM METRO CENTER RAIL STATION
- ⇒ ADDITIONAL STORAGE AVAILABLE IN BUILDING
- ⇒ FLEXIBLE LEASE TERMS AND RATES

\$39 PSF

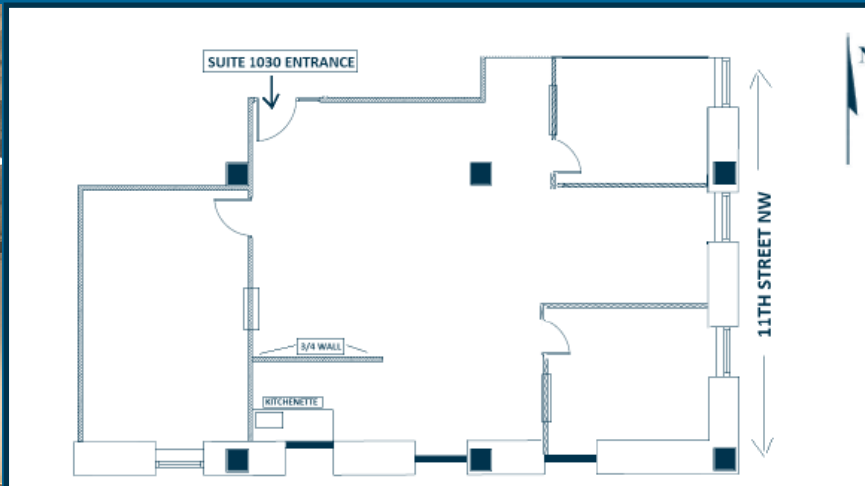
\$5,129/MONTH

FULL SERVICE



1100 H STREET, N.W.
WASHINGTON, DC

SUITE 1030
1,578 RSF



RB properties, inc.

TED VOGEL

MOLLYE SCHNEEBERG

MSCHNEEBERG@RBPROPERTIESINC.COM

(202) 342-1054

WWW.RBPROPERTIESINC.COM