

PORT CHARLOTTE COMMONS | Port Charlotte, Florida

SIZE

12.1 Acres

LOCATION

Northwest quadrant of Veterans Blvd. and Cochran Blvd. in Port Charlotte Charlotte County, Florida.

TRAFFIC COUNTS

Veterans Blvd. - 20,000
Cochran Blvd. - 15,000

KEY DEMOGRAPHICS 3-MILE RADIUS

POPULATION

Current Estimated Population 38,271
2023 Projected Population 43,297
2010 Census Population 35,060

INCOME

Average Household Income \$58,470
MEDIAN AGE 48 years

HOUSEHOLDS

Current Estimated Households 16,114
2023 Projected Households 17,156
2010 Census Households 14,920

DAYTIME DEMOS

Number of Businesses 1,790
Number of Employees 16,934



Inspired ideas.
Integrated real estate solutions.

www.castoinfo.com | 5391 Lakewood Ranch Blvd., Suite 100 | Sarasota, FL | 941.552.2700

LEASING REPRESENTATIVE

Massimo Rastrelli
941.552.4336 OFFICE
941.806.0636 FAX
mrastrelli@castoinfo.com

PORT CHARLOTTE COMMONS | Port Charlotte, Florida

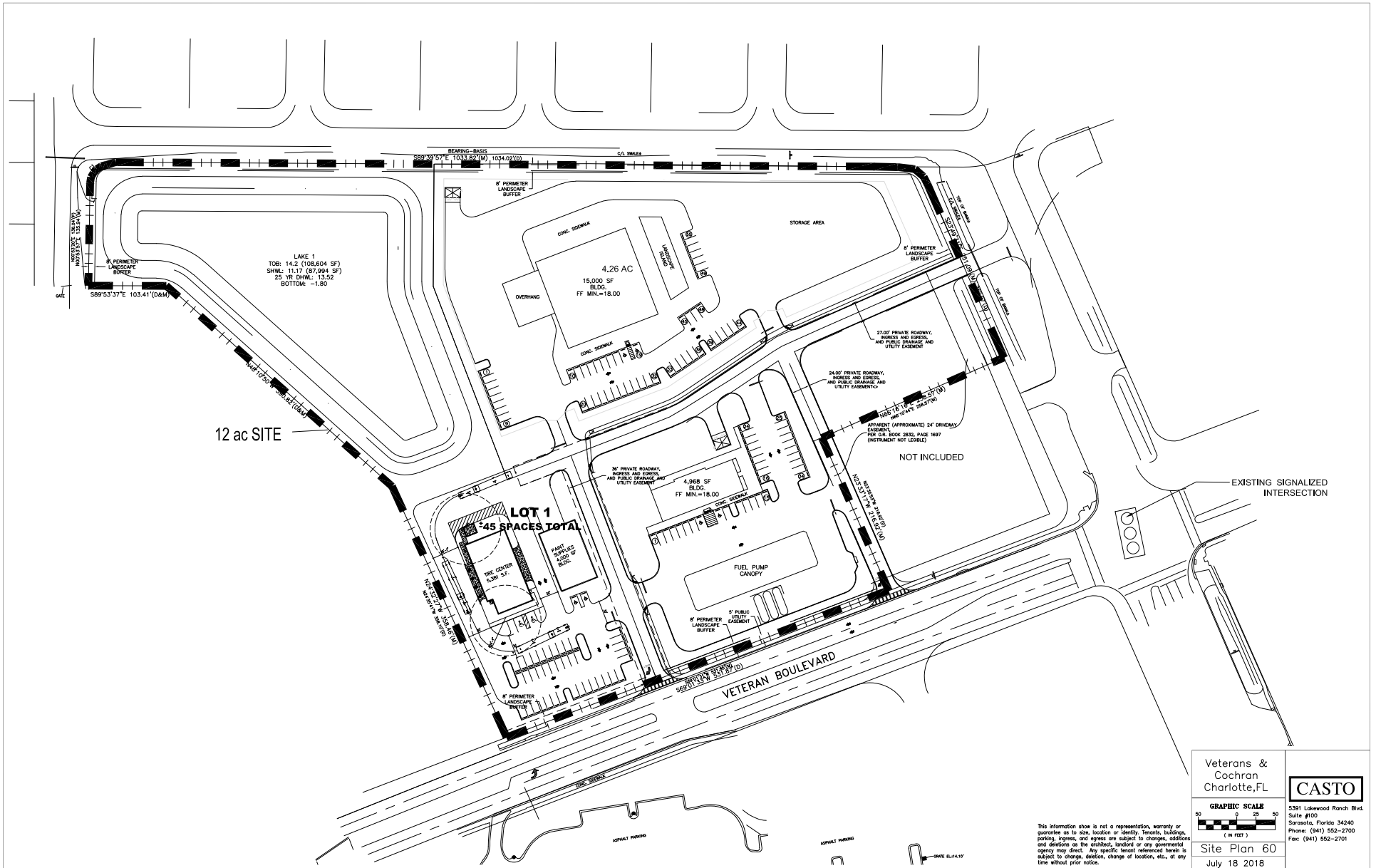


Tenant names, building sizes and shopping center configuration are subject to change.



5391 Lakewood Ranch Blvd., Suite 100 | Sarasota, Florida 34240 | www.castoinfo.com

PORT CHARLOTTE COMMONS | Port Charlotte, Florida



5391 Lakewood Ranch Blvd., Suite 100 | Sarasota, Florida 34240 | www.castoinfo.com

Tenant names, building sizes and shopping center configuration are subject to change.