

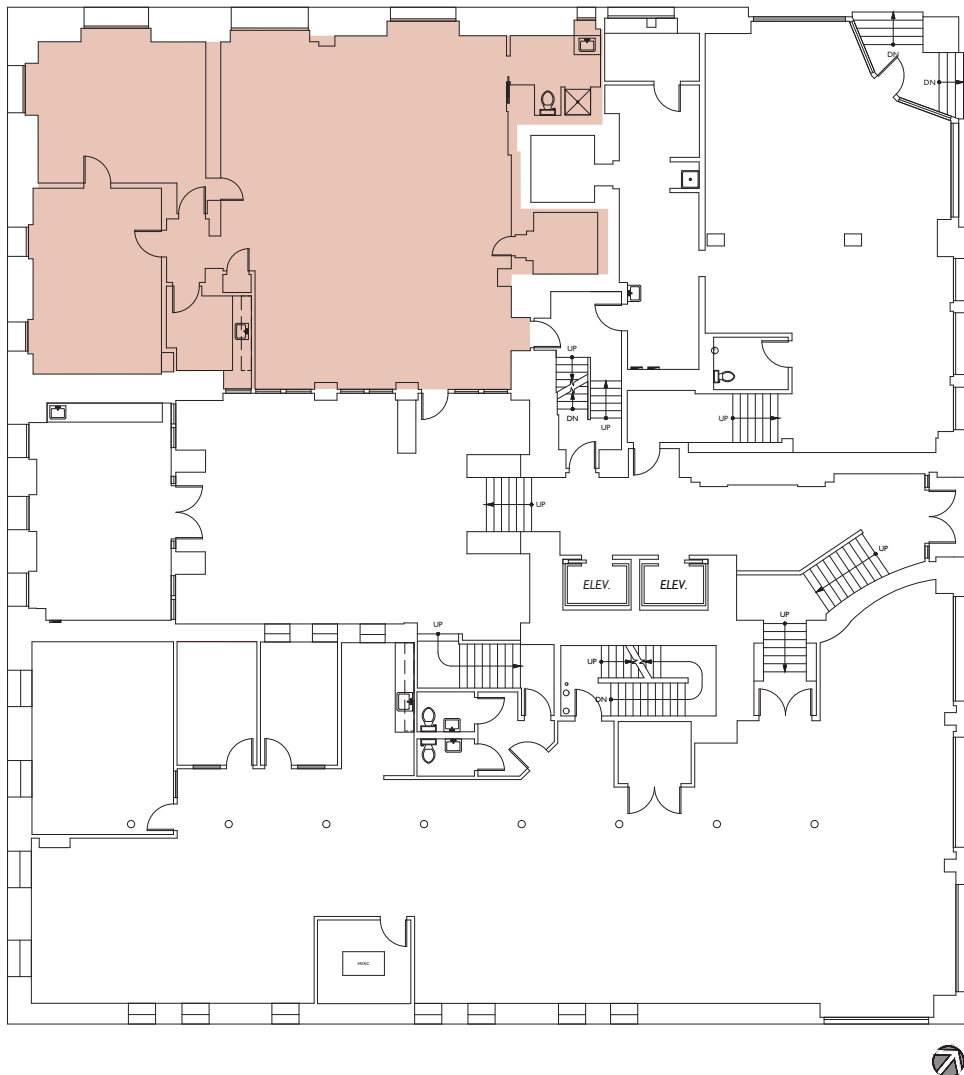
OFFICE SPACE **FOR LEASE**

# The Broderick Building

615 SECOND AVE | SEATTLE, WA 98104

## Availabilities

SUITE 100 • 2,719 RSF



TIM JONES  
+1 206 971 7011  
tim.jones@am.jll.com

KATHRYN POPE  
+1 206 607 1720  
kathryn.pope@am.jll.com

CONNOR RAFFETY  
+1 206 437 1006  
connor.raffety@am.jll.com

© 2020 Jones Lang LaSalle IP, Inc. All rights reserved.  
All information contained herein is from sources deemed  
reliable; however, no representation or warranty is made to  
the accuracy thereof. Jones Lang LaSalle Brokerage, Inc.

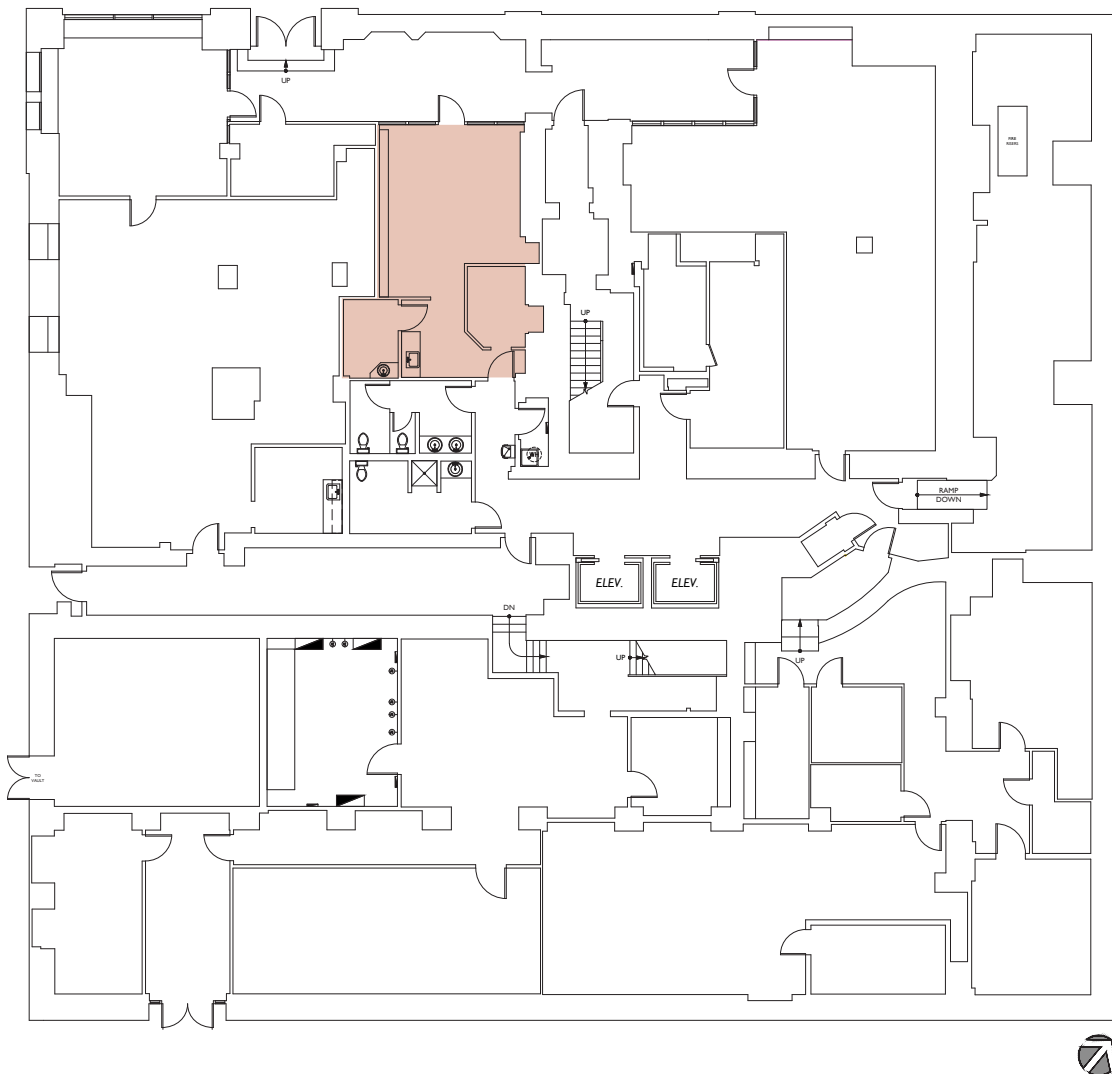
OFFICE SPACE **FOR LEASE**

# The Broderick Building

615 SECOND AVE | SEATTLE, WA 98104

## Availabilities

SUITE 115 • 634 RSF



TIM JONES  
+1 206 971 7011  
tim.jones@am.jll.com

KATHRYN POPE  
+1 206 607 1720  
kathryn.pope@am.jll.com

CONNOR RAFFETY  
+1 206 437 1006  
connor.raffety@am.jll.com

© 2020 Jones Lang LaSalle IP, Inc. All rights reserved.  
All information contained herein is from sources deemed  
reliable; however, no representation or warranty is made to  
the accuracy thereof. Jones Lang LaSalle Brokerage, Inc.

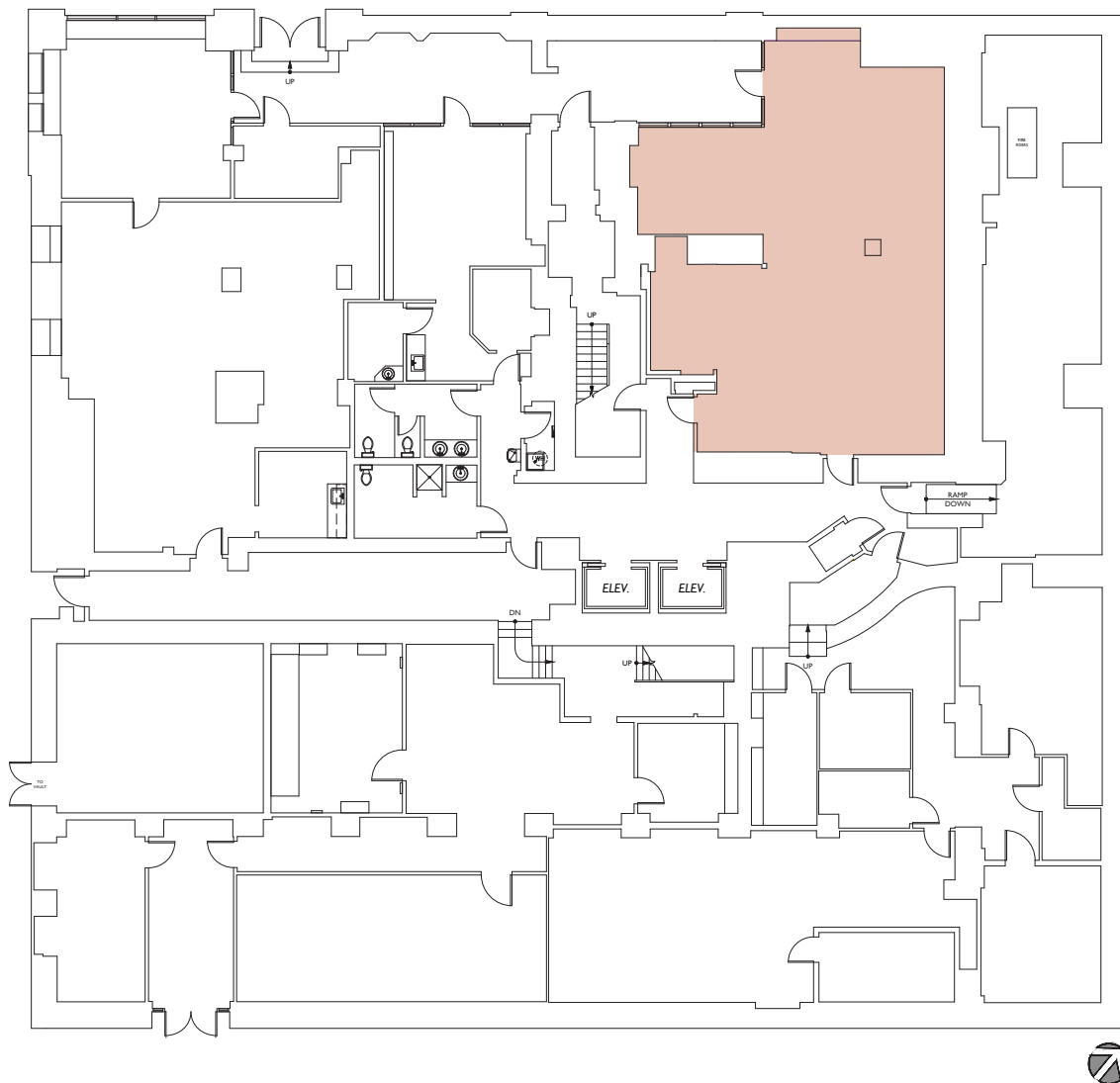
OFFICE SPACE **FOR LEASE**

# The Broderick Building

615 SECOND AVE | SEATTLE, WA 98104

## Availabilities

SUITE 117 • 1,638 RSF



TIM JONES  
+1 206 971 7011  
tim.jones@am.jll.com

KATHRYN POPE  
+1 206 607 1720  
kathryn.pope@am.jll.com

CONNOR RAFFETY  
+1 206 437 1006  
connor.raffety@am.jll.com

© 2020 Jones Lang LaSalle IP, Inc. All rights reserved.  
All information contained herein is from sources deemed  
reliable; however, no representation or warranty is made to  
the accuracy thereof. Jones Lang LaSalle Brokerage, Inc.

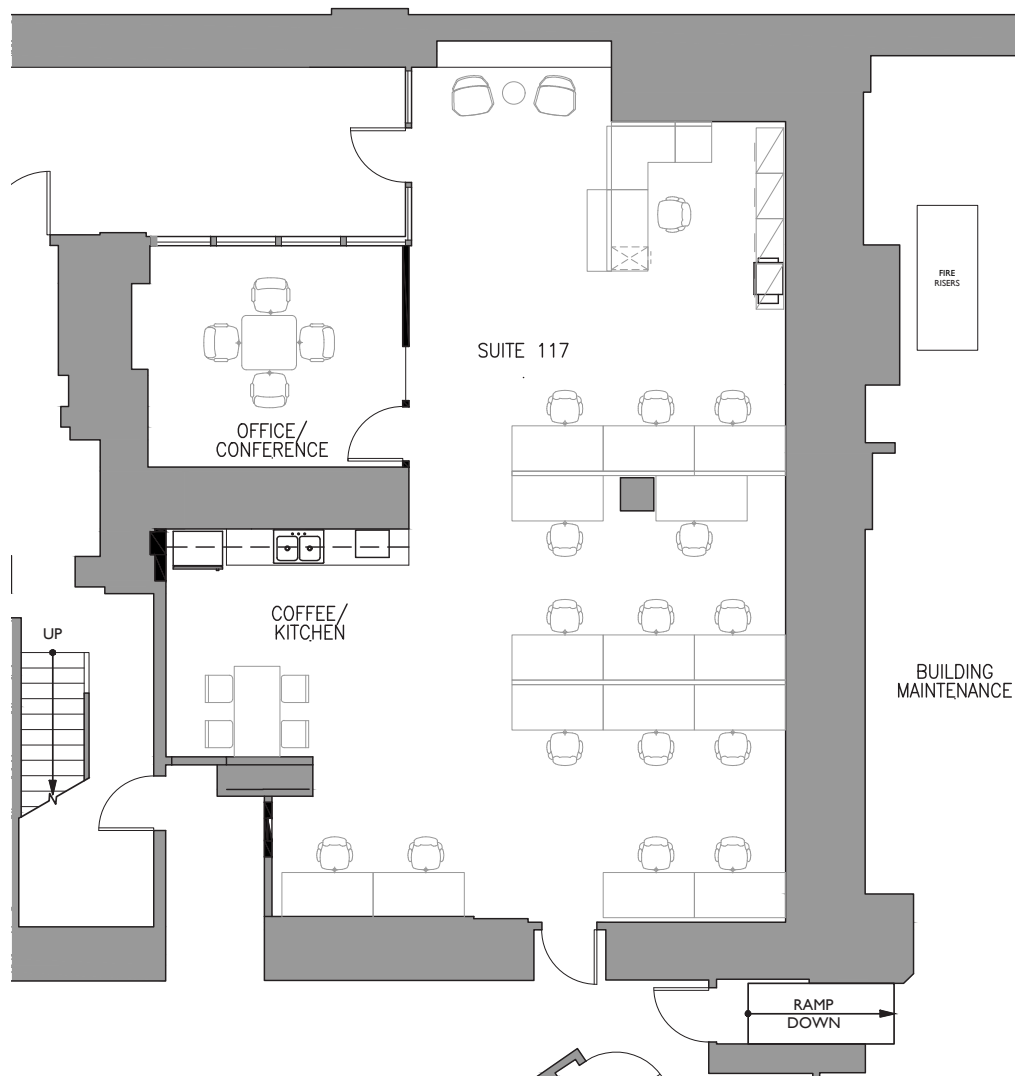
OFFICE SPACE **FOR LEASE**

# The Broderick Building

615 SECOND AVE | SEATTLE, WA 98104

## Availabilities

SUITE 117 • 1,638 RSF



TIM JONES  
+1 206 971 7011  
tim.jones@am.jll.com

KATHRYN POPE  
+1 206 607 1720  
kathryn.pope@am.jll.com

CONNOR RAFFETY  
+1 206 437 1006  
connor.raffety@am.jll.com

© 2020 Jones Lang LaSalle IP, Inc. All rights reserved.  
All information contained herein is from sources deemed  
reliable; however, no representation or warranty is made to  
the accuracy thereof. Jones Lang LaSalle Brokerage, Inc.

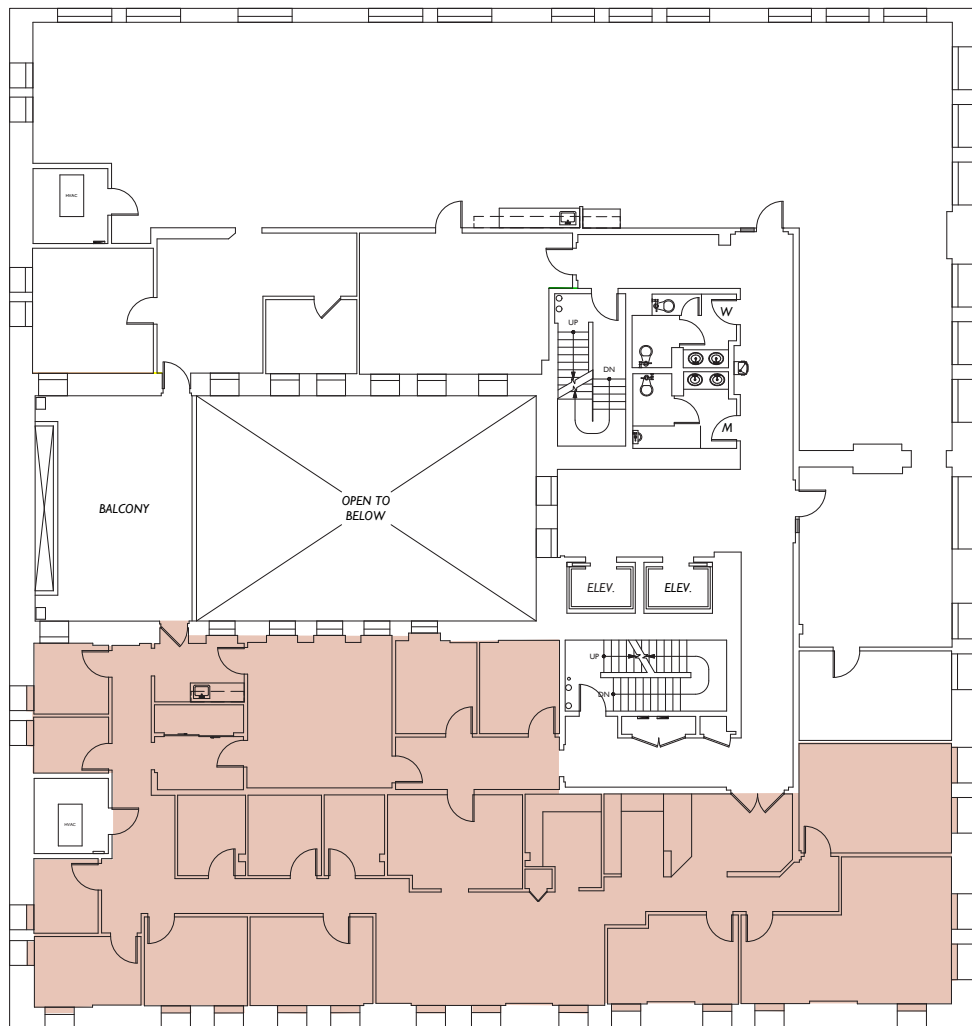
OFFICE SPACE **FOR LEASE**

# The Broderick Building

615 SECOND AVE | SEATTLE, WA 98104

## Availabilities

SUITE 275 • 4,983 RSF



TIM JONES  
+1 206 971 7011  
tim.jones@am.jll.com

KATHRYN POPE  
+1 206 607 1720  
kathryn.pope@am.jll.com

CONNOR RAFFETY  
+1 206 437 1006  
connor.raffety@am.jll.com

© 2020 Jones Lang LaSalle IP, Inc. All rights reserved.  
All information contained herein is from sources deemed  
reliable; however, no representation or warranty is made to  
the accuracy thereof. Jones Lang LaSalle Brokerage, Inc.

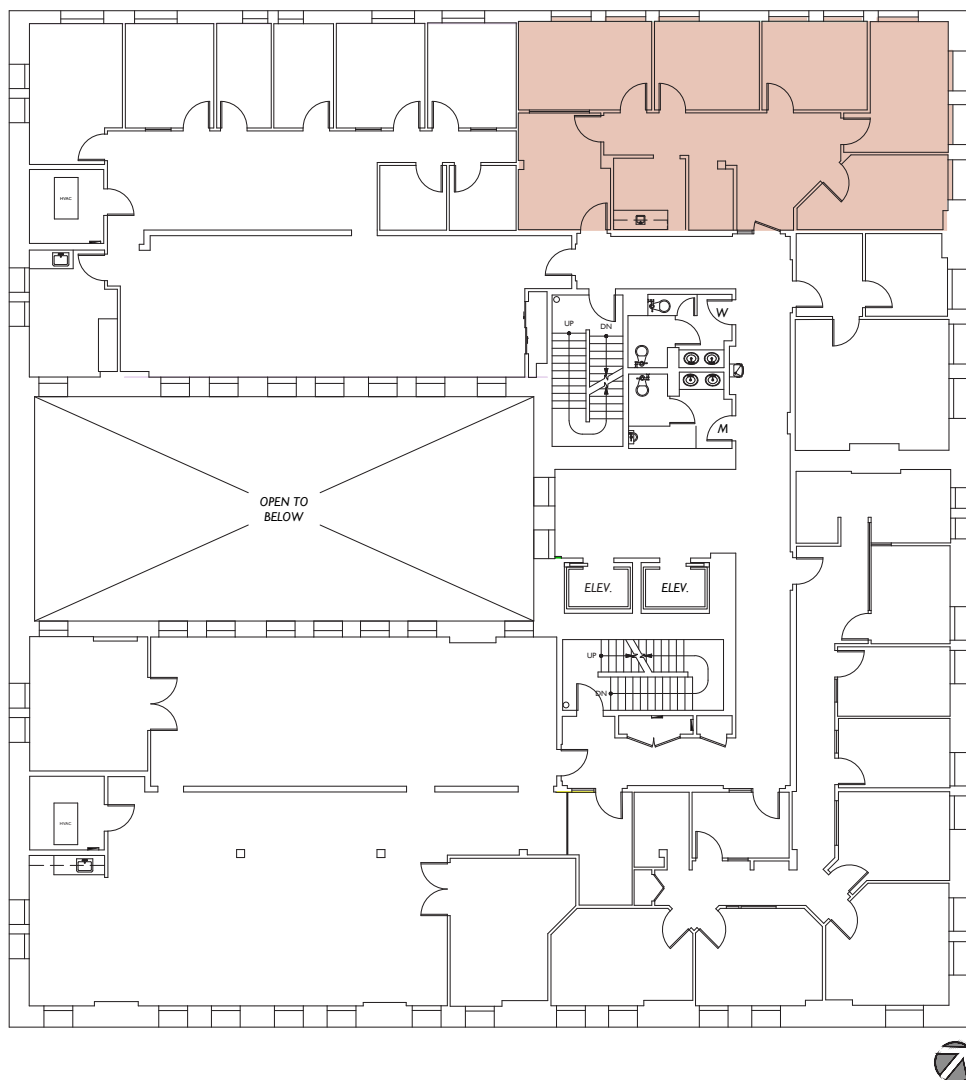
OFFICE SPACE **FOR LEASE**

# The Broderick Building

615 SECOND AVE | SEATTLE, WA 98104

## Availabilities

SUITE 350 • 1,562 RSF



TIM JONES  
+1 206 971 7011  
tim.jones@am.jll.com

KATHRYN POPE  
+1 206 607 1720  
kathryn.pope@am.jll.com

CONNOR RAFFETY  
+1 206 437 1006  
connor.raffety@am.jll.com

© 2020 Jones Lang LaSalle IP, Inc. All rights reserved.  
All information contained herein is from sources deemed  
reliable; however, no representation or warranty is made to  
the accuracy thereof. Jones Lang LaSalle Brokerage, Inc.

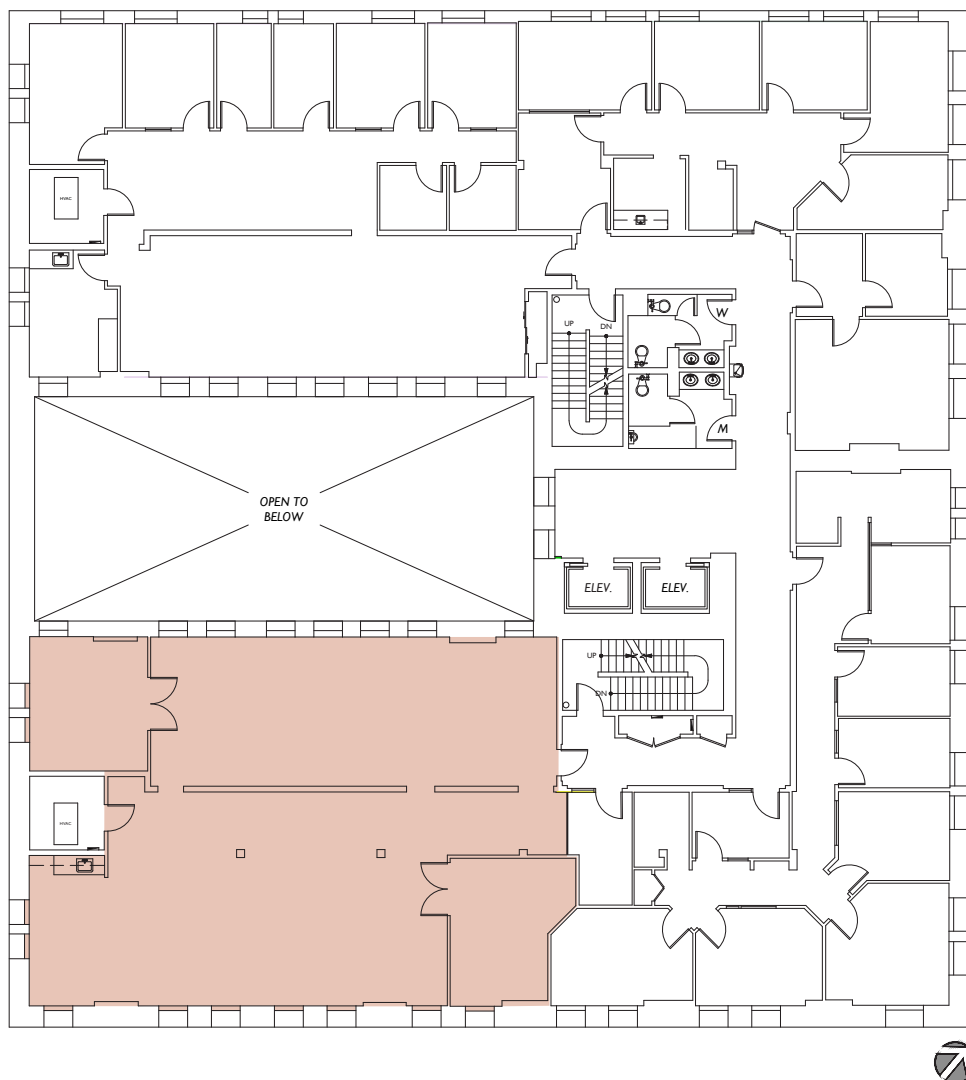
OFFICE SPACE **FOR LEASE**

# The Broderick Building

615 SECOND AVE | SEATTLE, WA 98104

## Availabilities

SUITE 380 • 3,241 RSF



TIM JONES  
+1 206 971 7011  
tim.jones@am.jll.com

KATHRYN POPE  
+1 206 607 1720  
kathryn.pope@am.jll.com

CONNOR RAFFETY  
+1 206 437 1006  
connor.raffety@am.jll.com

© 2020 Jones Lang LaSalle IP, Inc. All rights reserved.  
All information contained herein is from sources deemed  
reliable; however, no representation or warranty is made to  
the accuracy thereof. Jones Lang LaSalle Brokerage, Inc.



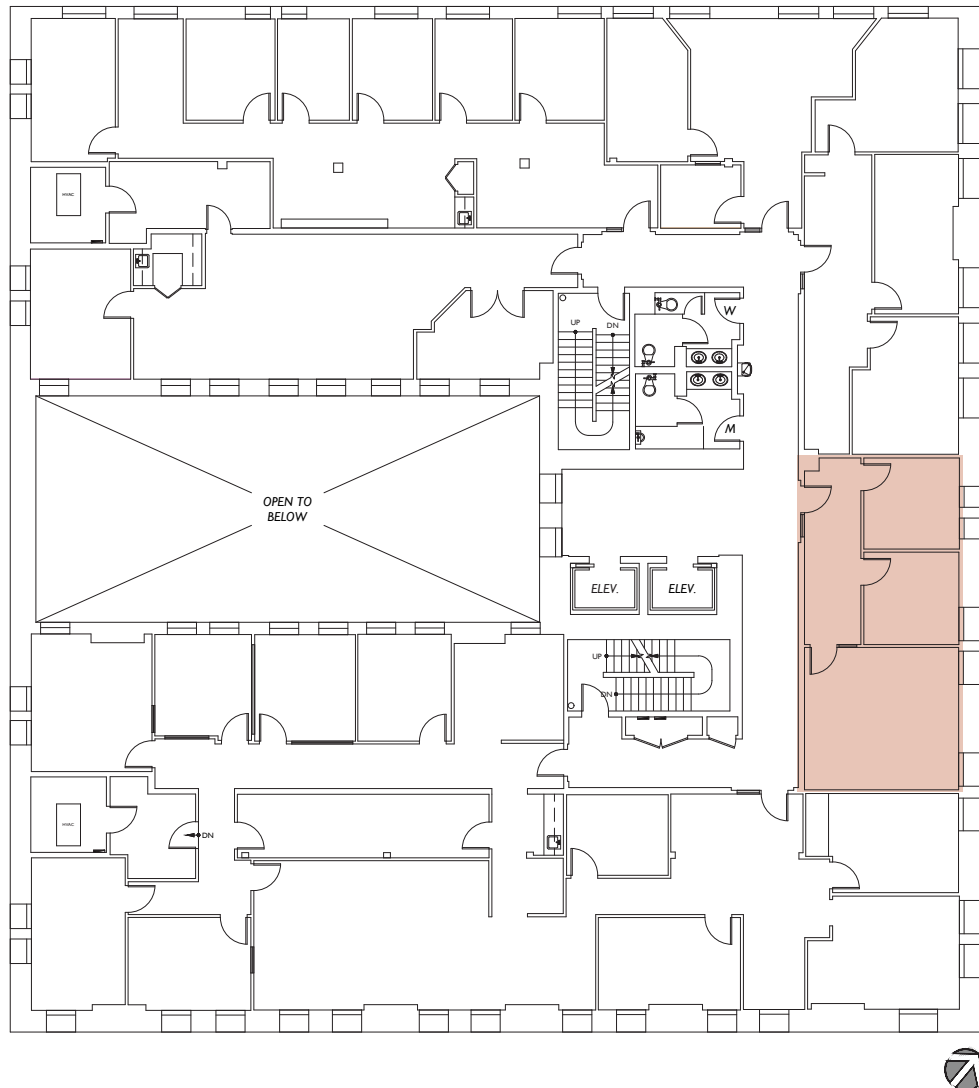
OFFICE SPACE **FOR LEASE**

# The Broderick Building

615 SECOND AVE | SEATTLE, WA 98104

## Availabilities

SUITE 535 • 875 RSF



TIM JONES  
+1 206 971 7011  
tim.jones@am.jll.com

KATHRYN POPE  
+1 206 607 1720  
kathryn.pope@am.jll.com

CONNOR RAFFETY  
+1 206 437 1006  
connor.raffety@am.jll.com

© 2020 Jones Lang LaSalle IP, Inc. All rights reserved.  
All information contained herein is from sources deemed  
reliable; however, no representation or warranty is made to  
the accuracy thereof. Jones Lang LaSalle Brokerage, Inc.



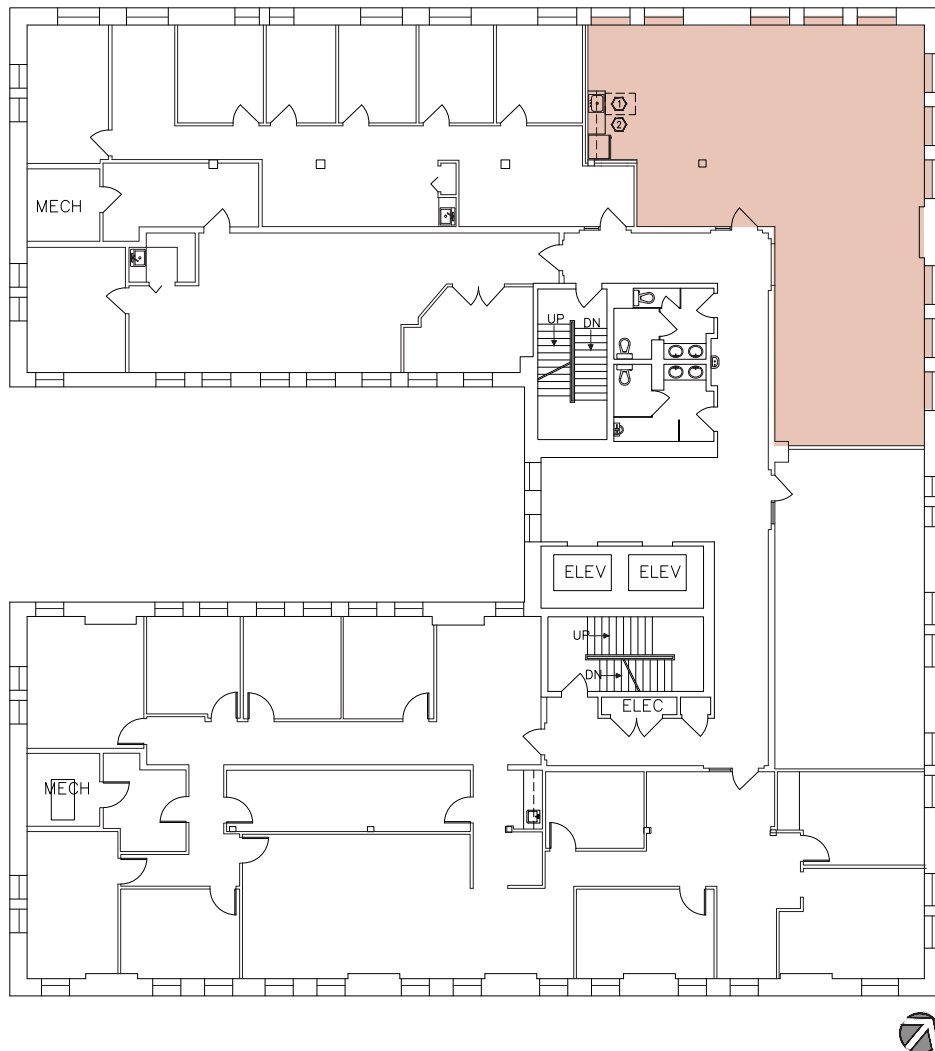
OFFICE SPACE **FOR LEASE**

# The Broderick Building

615 SECOND AVE | SEATTLE, WA 98104

## Availabilities

SUITE 550 • 1,796 RSF



TIM JONES  
+1 206 971 7011  
tim.jones@am.jll.com

KATHRYN POPE  
+1 206 607 1720  
kathryn.pope@am.jll.com

CONNOR RAFFETY  
+1 206 437 1006  
connor.raffety@am.jll.com

© 2020 Jones Lang LaSalle IP, Inc. All rights reserved.  
All information contained herein is from sources deemed  
reliable; however, no representation or warranty is made to  
the accuracy thereof. Jones Lang LaSalle Brokerage, Inc.

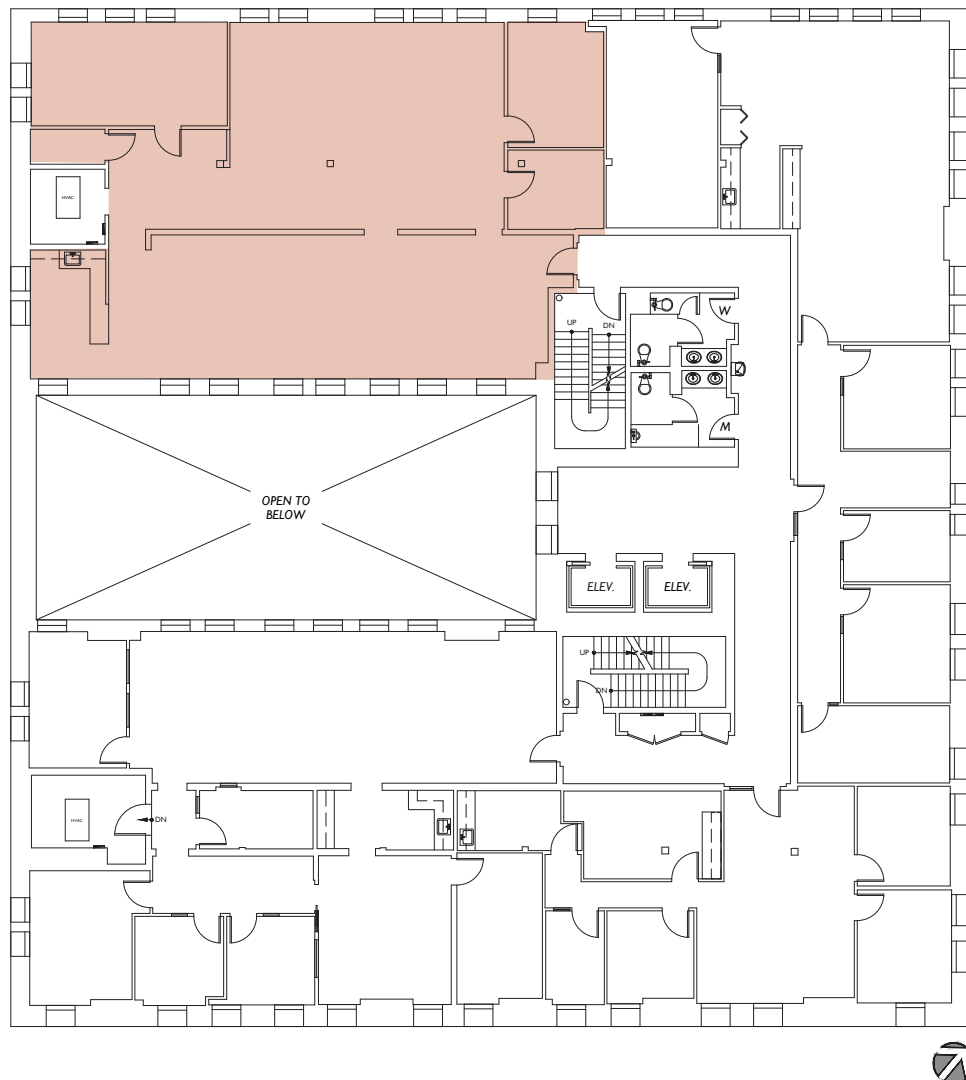
OFFICE SPACE **FOR LEASE**

# The Broderick Building

615 SECOND AVE | SEATTLE, WA 98104

## Availabilities

SUITE 620 • 3,293 RSF



TIM JONES  
+1 206 971 7011  
tim.jones@am.jll.com

KATHRYN POPE  
+1 206 607 1720  
kathryn.pope@am.jll.com

CONNOR RAFFETY  
+1 206 437 1006  
connor.raffety@am.jll.com

© 2020 Jones Lang LaSalle IP, Inc. All rights reserved.  
All information contained herein is from sources deemed  
reliable; however, no representation or warranty is made to  
the accuracy thereof. Jones Lang LaSalle Brokerage, Inc.

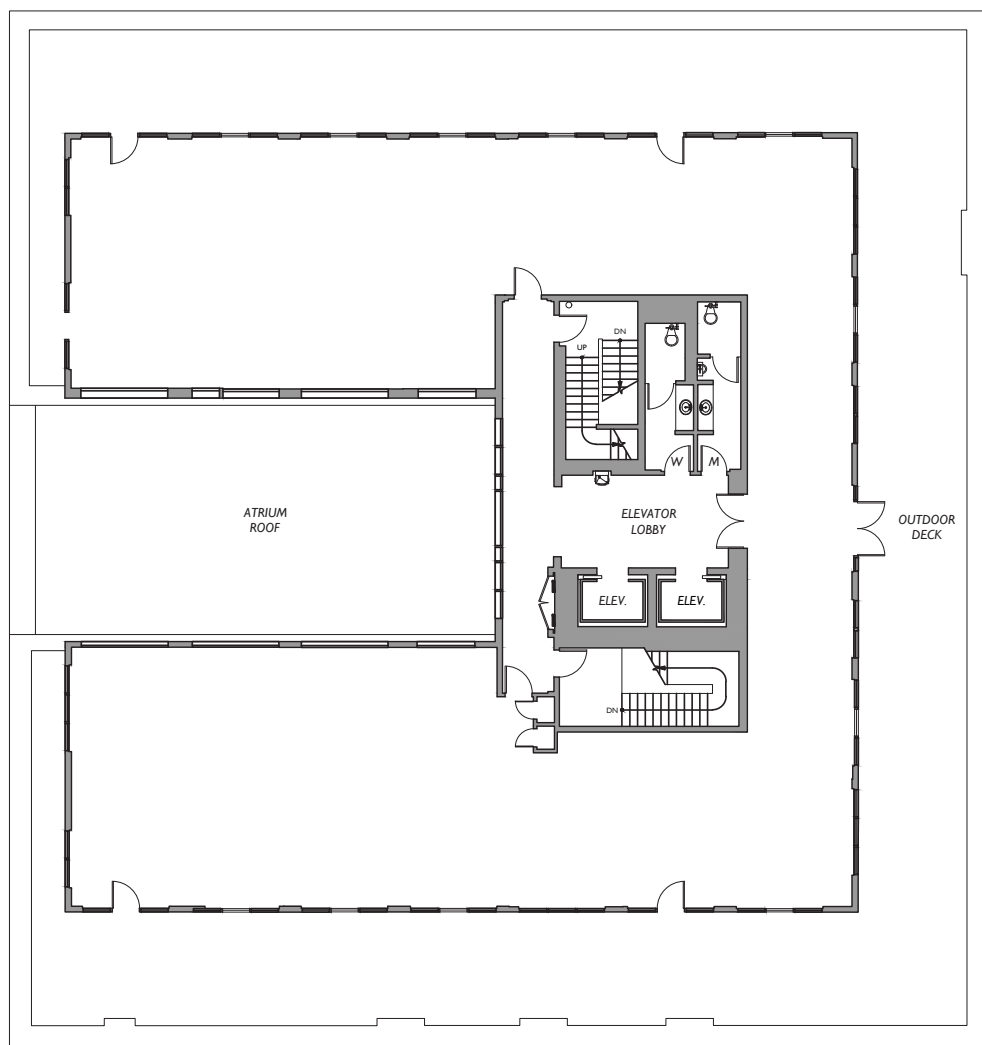
OFFICE SPACE **FOR LEASE**

# The Broderick Building

615 SECOND AVE | SEATTLE, WA 98104

## Availabilities

SUITE 700 • 6,200 RSF



TIM JONES  
+1 206 971 7011  
tim.jones@am.jll.com

KATHRYN POPE  
+1 206 607 1720  
kathryn.pope@am.jll.com

CONNOR RAFFETY  
+1 206 437 1006  
connor.raffety@am.jll.com

© 2020 Jones Lang LaSalle IP, Inc. All rights reserved.  
All information contained herein is from sources deemed  
reliable; however, no representation or warranty is made to  
the accuracy thereof. Jones Lang LaSalle Brokerage, Inc.