

Publix #0590 - Colonial Plaza

9510 SW 160th Street
Miami, FL 33157
Lat 25.620, Long -80.348

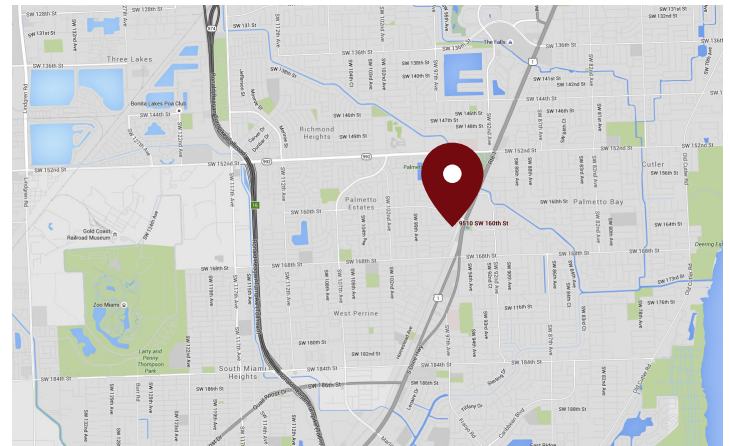
FOR LEASE



1,360 - 1,800 SF AVAILABLE

PROPERTY HIGHLIGHTS

- Miami MSA
- Located Just West of Main South Florida Artery, US1, on Colonial Drive
- Strong Regional and National Tenant Mix
- Serves as the Dominant Neighborhood Shopping Center for the Communities Located off of Colonial Drive
- Publix-Anchored
- Combined Traffic Count: 44,904 VPD



DEMOGRAPHICS	1 Mile	3 Miles	5 Miles
Total Population	17,215	115,509	289,611
Daytime Population	15,481	108,160	281,394
Total Households	4,607	37,001	91,998
Avg. HH Income	\$86,484	\$106,259	\$104,111

Data provided by Placer Labs Inc. (www.placer.ai) & Esri

Fernando Espino

Office: 305.342.4629 | Cell: 305.632.1809 | fespino@crossmanco.com
2655 South Le Jeune Road, Suite 908, Miami, FL

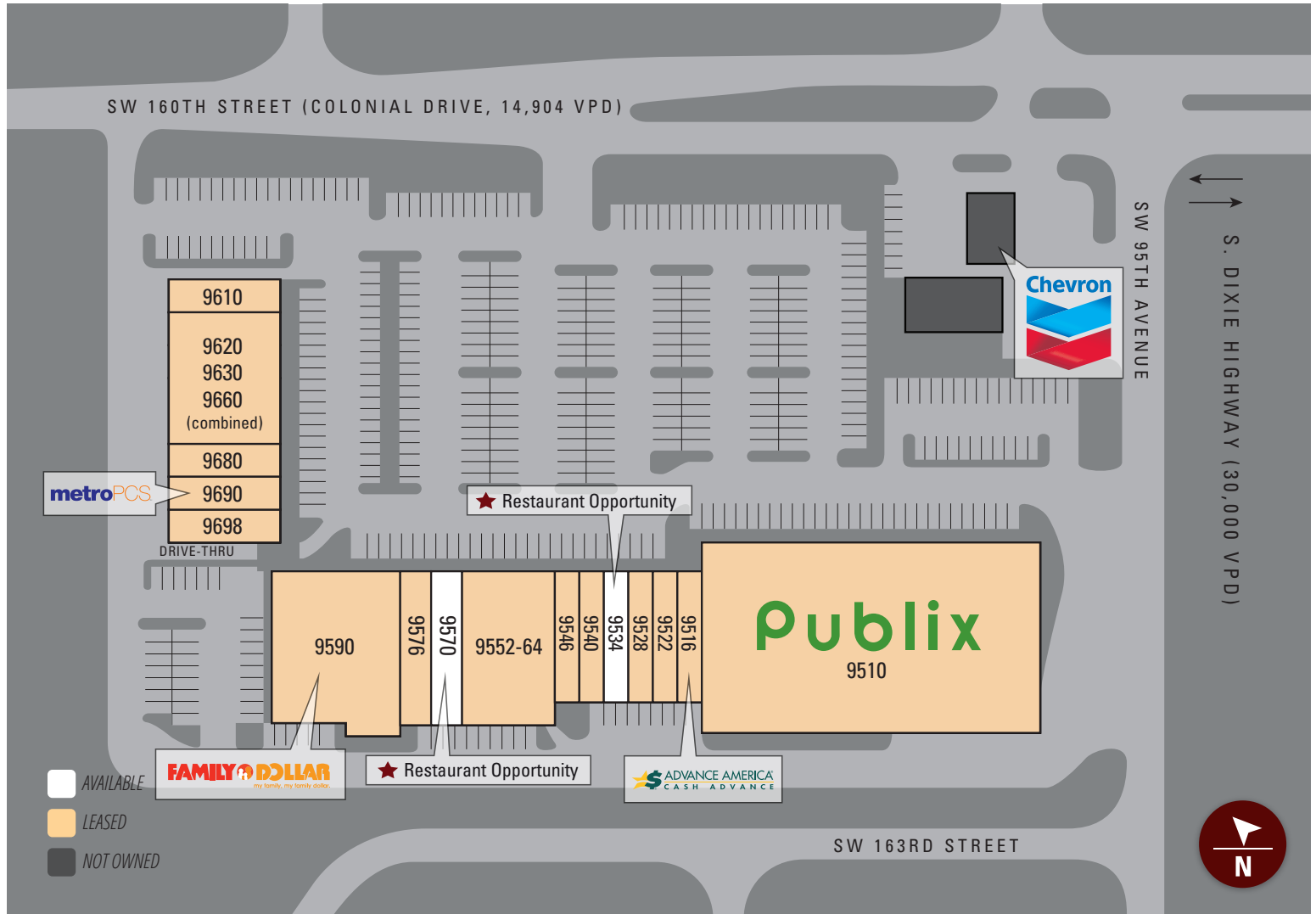
Licensed Real Estate Broker. No warranty expressed or implied has been made to the accuracy of the information provided herein, no liability assumed for error or omission.



www.crossmanco.com

Publix #0590 - Colonial Plaza

9510 SW 160th Street
Miami, FL 33157
Lat 25.620, Long -80.348



Suite	Tenant	Size
9510	Publix	27,887
9516	Advance America	1,340
9522	Lena Hair	1,360
9528	JC Chinese Restaurant	1,360
9534	AVAILABLE	1,360
9540	Unavailable	1,360
9546	La Union Salvadoreana	1,360
9552-64	Wellcare	6,200
9570	AVAILABLE	1,800

Suite	Tenant	Size
9576	Super Wash and Dry	2,000
9590	Family Dollar	8,500
9610	Snappers	1,800
9620/9630/9660	La Quinta Medical Centers	7,510
9680	Asian Nails	1,172
9690	Metro PCS	1,172
9698	Packages & More	1,170
TOTAL		67,351

Fernando Espino

Office: 305.342.4629 | Cell: 305.632.1809 | fespino@crossmanco.com
2655 South Le Jeune Road, Suite 908, Miami, FL

Licensed Real Estate Broker. No warranty expressed or implied has been made to the accuracy of the information provided herein, no liability assumed for error or omission.



www.crossmanco.com

Publix #0590 - Colonial Plaza

9510 SW 160th Street
Miami, FL 33157
Lat 25.620, Long -80.348

FOOT TRAFFIC OVERVIEW

EST. # OF CUSTOMERS ANNUALLY

 **29,300**

EST. # OF VISITS ANNUALLY

 **60,000**

AVG. VISITS / CUSTOMER

 **2.05**

AVG. LENGTH-OF-STAY / VISIT

 **41 MIN**

TOP 3 DAYS



	# OF VISITS
Friday	11,277
Saturday	10,123
Tuesday	8,861

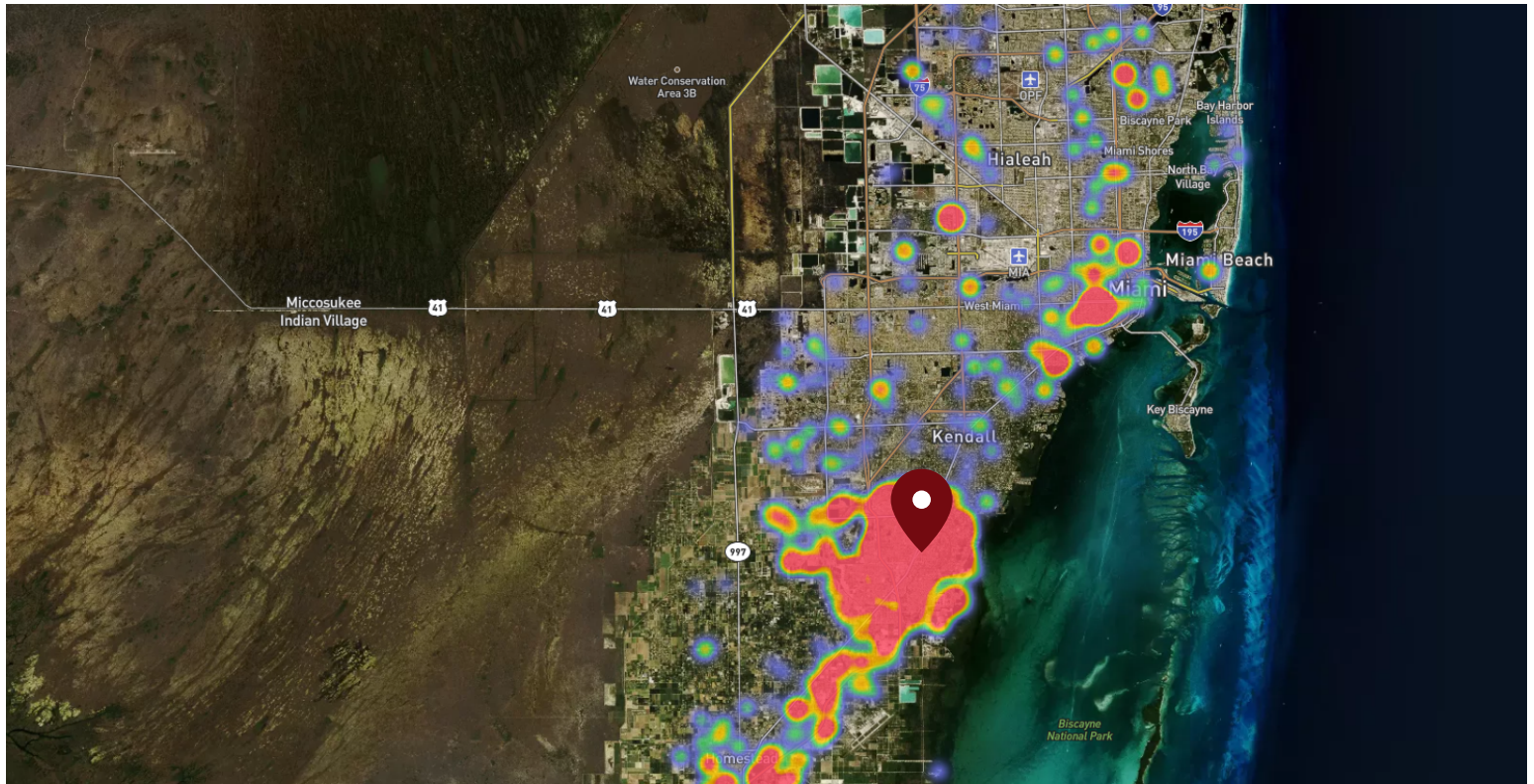
TOP 3 HOURS



	# OF VISITS
1-2 PM	10,617
12-1 PM	10,383
2-3 PM	10,307

Data provided by Placer Labs Inc. (www.placer.ai) Oct 1, 2019 - Sept 30, 2020

SITE VISIT DENSITY



Red, orange, and yellow colors represent the location of 60% of site visitors

Data provided by Placer Labs Inc. (www.placer.ai)

Fernando Espino

Office: 305.342.4629 | Cell: 305.632.1809 | fespino@crossmanco.com
2655 South Le Jeune Road, Suite 908, Miami, FL

Licensed Real Estate Broker. No warranty expressed or implied has been made to the accuracy of the information provided herein, no liability assumed for error or omission.



www.crossmanco.com