



www.frontrangecommercial.com

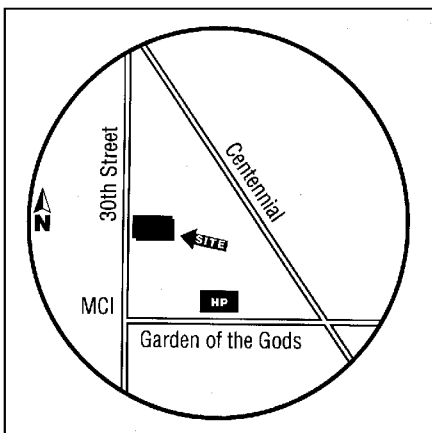
Office Space For Lease

Mountain Research Buildings
Colorado Springs, Colorado



FEATURES:

- Highly visible property offers excellent access from west side of town via 30th Street, Centennial Boulevard and Garden of the Gods Road.
- Ideally situated with excellent proximity to Intel, MCI WorldCom, Hewlett Packard, LSI Logic, Vitesse, Quantum and more.



LOCATION: 4935-4945 North 30th Street, NE corner of 30th Street and Garden of the Gods Rd.

DESCRIPTION: Property is comprised of a two-story building and a three-story building which are connected by a link tunnel.

AVAILABILITY: 200-4,000 sq. ft.

PARKING: 4/1,000 sq. ft.

YEAR COMPLETED: 1983 and 1985

LEASE RATES: From \$7.00 per sq. ft. NNN

TENANT FINISH: Negotiable

CONTACT:
Bob Nolette
(719) 520-9500
bnolette@frontrangecommercial.com

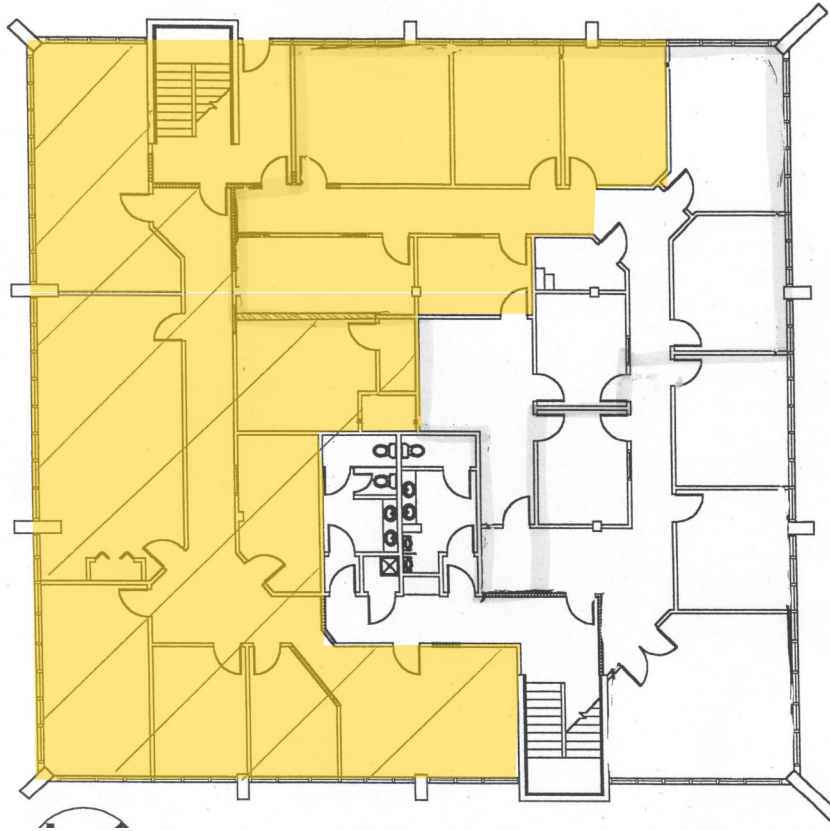


105 E. Moreno Ave., Second Floor, Colorado Springs, CO 80903, 719-520-9500 Fax 719-520-1043

All information is from sources deemed reliable and is submitted subject to errors, omissions, change of price, rental, prior sale and withdrawal without notice.
USERS OF THIS INFORMATION SHOULD BE CAREFUL TO VERIFY EVERY ITEM OF INFORMATION CONTAINED HEREIN.

Mountain Research Bldgs.—4935-4945 N. 30th Street Floor Plans

Available



4935 N 30th St., Second Floor

Aerial



FRONT RANGE COMMERCIAL

105 E. Moreno Ave., Second Floor, Colorado Springs, CO 80903, 719-520-9500 Fax 719-520-1043