

SCOTTSDALE AIRPARK CORPORATE CENTER

15030 NORTH HAYDEN ROAD
SCOTTSDALE, ARIZONA



±1,999-8,298 SF CLASS A OFFICE | AVAILABLE FOR LEASE



Michael Kitlica
Senior Director
+1 602 468 8559
michael.kitlica@cushwake.com

2555 E. Camelback Rd, Suite 400
Phoenix, Arizona 85016
ph:+1 602 954 9000 fx:+1 602 253 0528
cushmanwakefield.com

SCOTTSDALE AIRPARK CORPORATE CENTER

15030 NORTH HAYDEN ROAD
SCOTTSDALE, ARIZONA



PROPERTY FEATURES

- Building Size: ±15,859 SF (Divisible)
- Lot Size: ±1.53 Acres
- Year Built: 1985
- Parcel #: 215-55-031A
- Zoning: I-1, City of Scottsdale
- Hayden Road Frontage & Signage
- Covered Parking Available
- 4.0:1,000 Square Feet
- **For Lease: \$24.00 Full Service**
- **Tenant Improvements: Negotiable**

LOCATION FEATURES

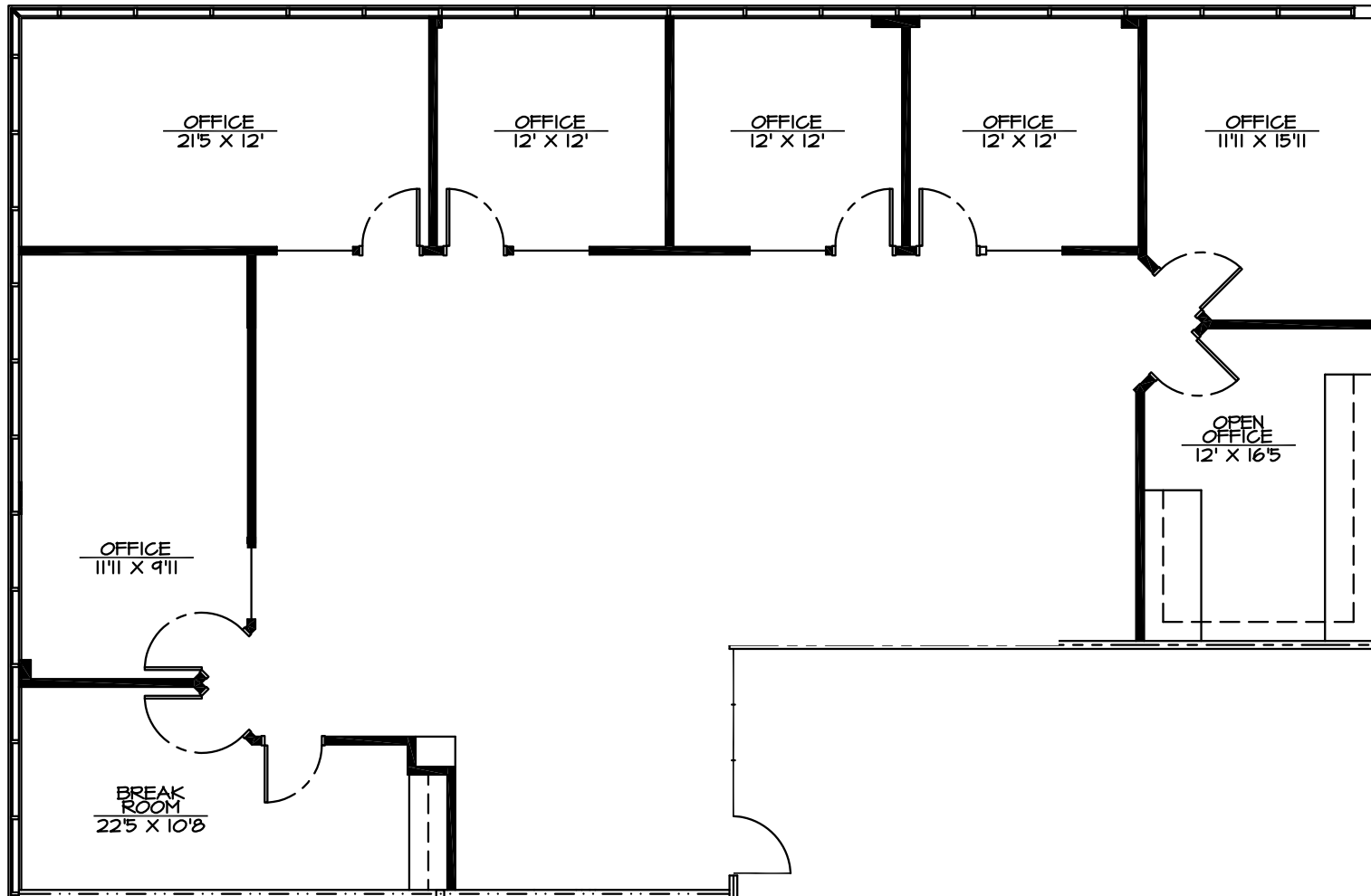
- Adjacent to the Loop 101 Pima Freeway with direct access to the northwest and southeast valley labor markets
- Close proximity to executive housing, including DC Ranch, Troon North, Desert Highlands, and Silverleaf
- 5 minute drive to TPC Scottsdale, Scottsdale Quarter and Kierland Commons dining, shopping, and night life
- Multiple points of ingress and egress
- Excellent freeway access via a full diamond interchange on the Loop 101 at Raintree Drive
- 5 minutes to Scottsdale Airpark and 30 minutes to Sky Harbor International Airport
- Abundant retail amenities with over 50 restaurants and 4 hotels within 2 miles

SCOTTSDALE AIRPARK CORPORATE CENTER

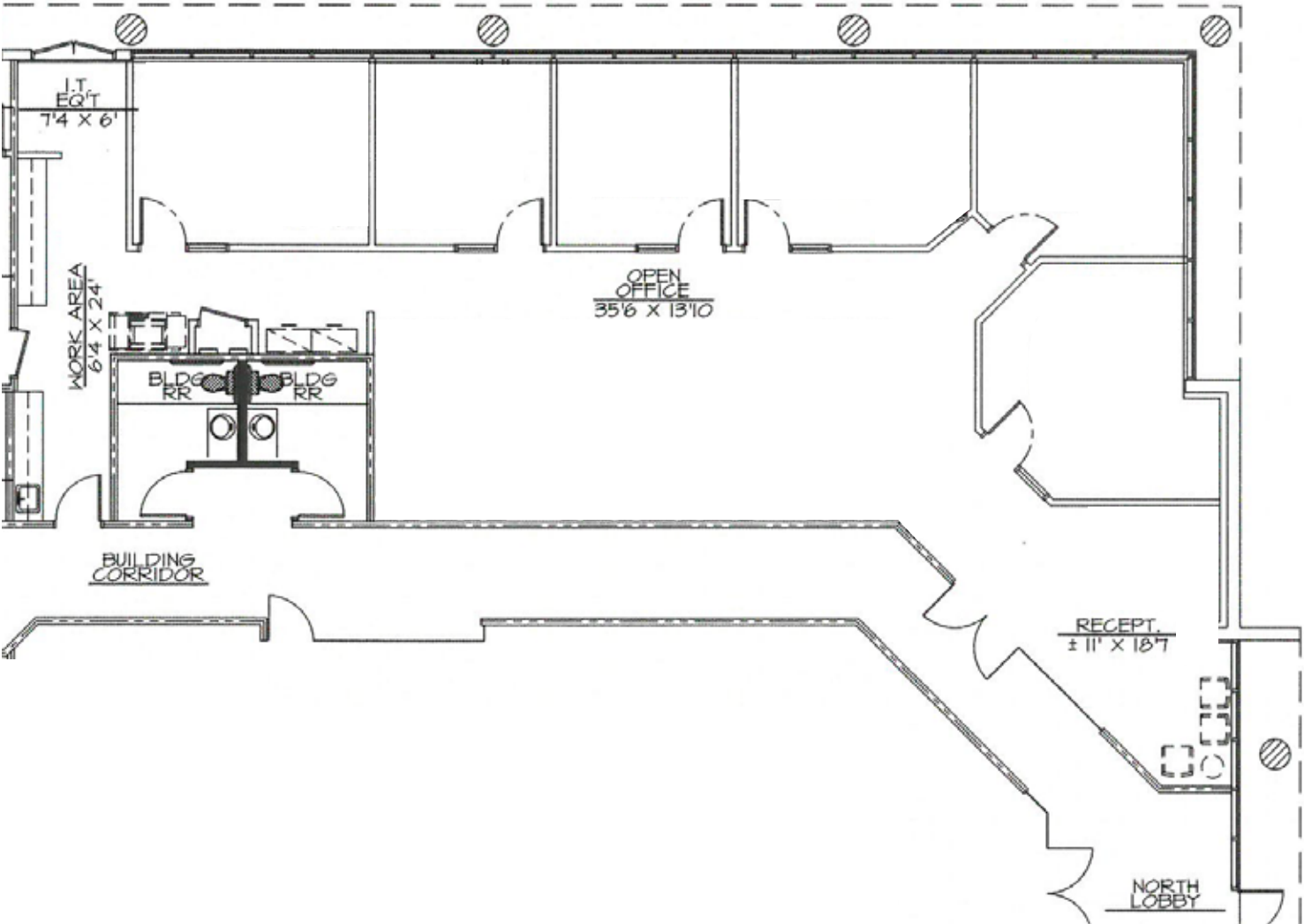
15030 NORTH HAYDEN ROAD
SCOTTSDALE, ARIZONA



SUITE 105
3,339 SQUARE FEET



SUITE 115
2,910 SQUARE FEET

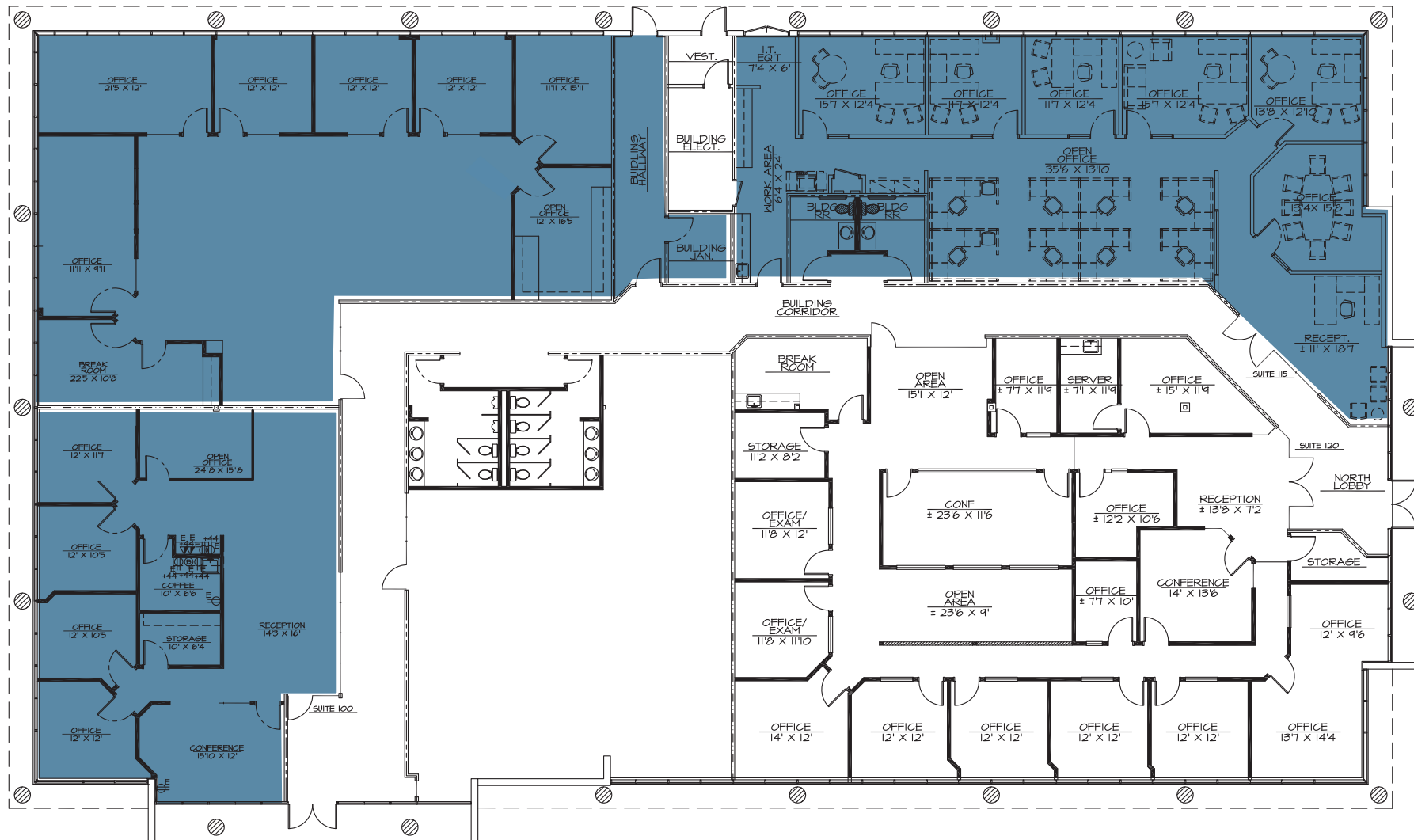


SCOTTSDALE AIRPARK CORPORATE CENTER

15030 NORTH HAYDEN ROAD
SCOTTSDALE, ARIZONA

SUITE 105
3,389 SQUARE FEET*

SUITE 115
2,910 SQUARE FEET*



SUITE 100
1,999 SQUARE FEET*

*Contiguous to 8,298 SF

SCOTTSDALE AIRPARK CORPORATE CENTER

15030 NORTH HAYDEN ROAD
SCOTTSDALE, ARIZONA

NEW EXTERIOR PAINT!



McDowell Mountain
Regional Park

DC Ranch

Fountain Hills

RANK LLOYD WRIGHT BLVD

101

HAYDEN ROAD

NORTHSIGHT BLVD

RAINTREE DRIVE

82ND STREET

Hanger One

15030

HAYDEN ROAD

78TH WAY

Scottsdale
Airport





SCOTTSDALE QUARTER

west elm
 POTTERY BARN
 BLANK
 SOL
 Apple
 URBAN OUTFITTERS
 RESTORATION HARDWARE
 THE GAP
 BRLO

KIERLAND COMMONS

CrabBBarrel
 Z GALLERY
 San Le Talli
 Smigo
 chico's
 STARBUCKS
 THE GARDEN OF EARTHEN POT

GREENWAY HAYDEN LOOP

SCOTTSDALE AIRPORT

HAYDEN ROAD

NORTHSIGHT BLVD

FRANK LLOYD WRIGHT BLVD

LOOP 101

For more information, please contact:

Michael Kitlica
 Senior Director
 +1 602 468 8559
 michael.kitlica@cushwake.com

2555 E. Camelback Rd, Suite 400
 Phoenix, Arizona 85016
 ph:+1 602 954 9000 fx:+1 602 253 0528
cushmanwakefield.com

©2020 Cushman & Wakefield. All rights reserved. The information contained in this communication is strictly confidential. This information has been obtained from sources believed to be reliable but has not been verified. No warranty or representation, express or implied, is made as to the condition of the property (or properties) referenced herein or as to the accuracy or completeness of the information contained herein, and same is submitted subject to errors, omissions, change of price, rental or other conditions, withdrawal without notice, and to any special listing conditions imposed by the property owner(s). Any projections, opinions or estimates are subject to uncertainty and do not signify current or future property performance.