

1301 E. ATLANTIC BLVD.

Pompano Beach



1301 E. Atlantic Blvd. Pompano Beach, FL 33060

Jaime Sturgis | Dan Ross | NativeRE.com | 954.595.2999



Native Realty Co. is a Licensed Real Estate Broker. This offering is subject to errors, omissions and change of price. As such no warranty or representation, expressed or implied, is made to the accuracy or completeness of the information contained herein. Any reliance on this information is solely at your own risk.

OVERVIEW

Address: 1301 E. Atlantic Blvd.
Pompano Beach, FL 33060

Size: 4,508 sq. feet

Price: \$15/psf NNN (6.20)

Available: July 1st 2019

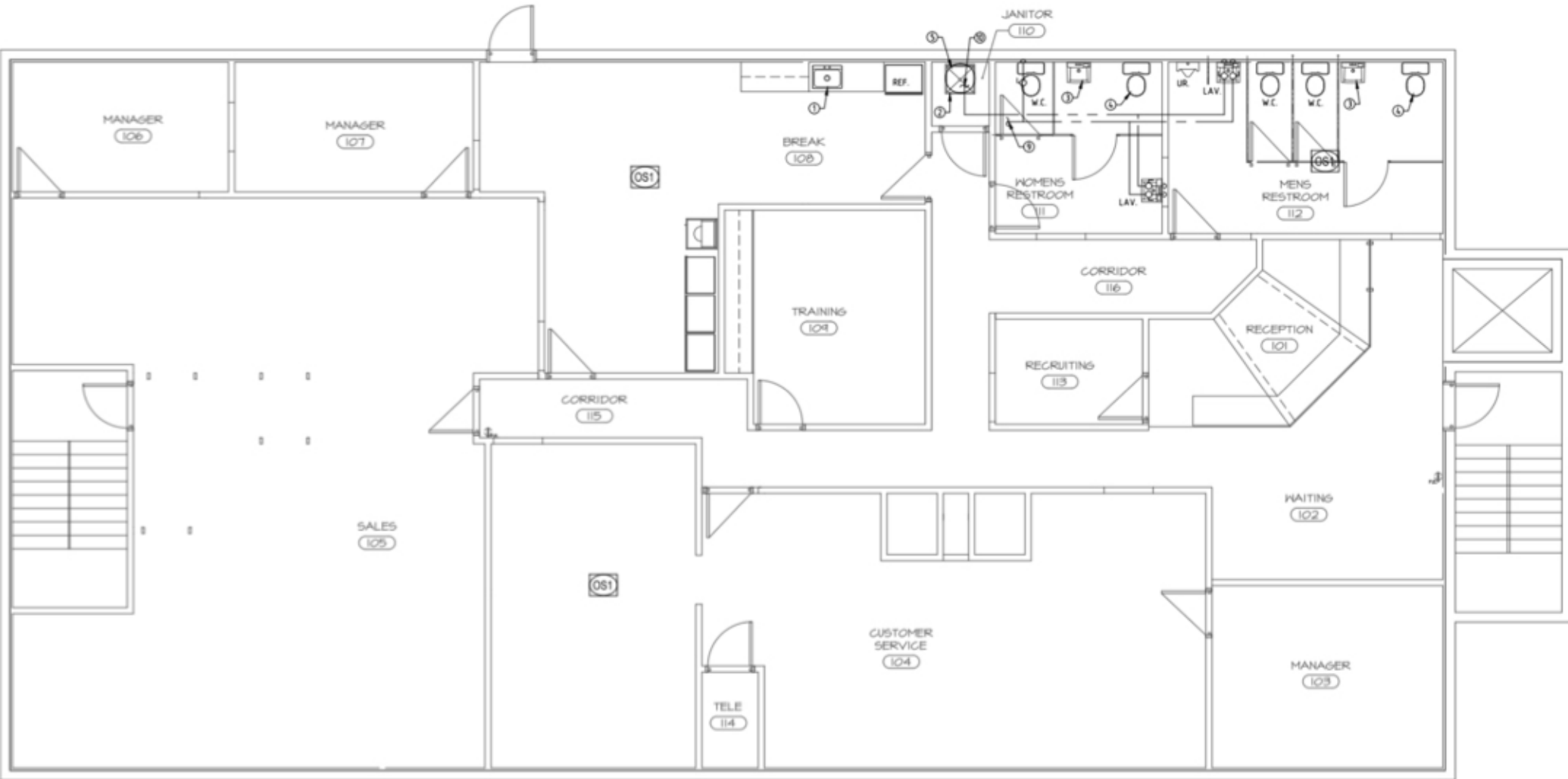
Native Realty is excited to bring 1301 E Atlantic Blvd in Pompano Beach to market. The building was recently updated, and features direct exposure to an average of over 40,000 vehicles per day, making it a very high visibility creative office location. The suite is located on the entire 2nd floor of the building, providing strong frontage and signage opportunities for tenants. It has a private entrance and elevator.

The unit was just completely renovated and features brand new offices, lighting, bathrooms, kitchen, and all new fixtures. There is ample on-site parking provided free of charge. The site is centrally located a few blocks from US-1 and easily accessible from I-95 on Atlantic Blvd. This central location allows

The sites central location allows it to serve as a headquarters for Broward and Palm Beach County operations.

Summary | 1301 E. Atlantic Blvd. Pompano Beach, FL

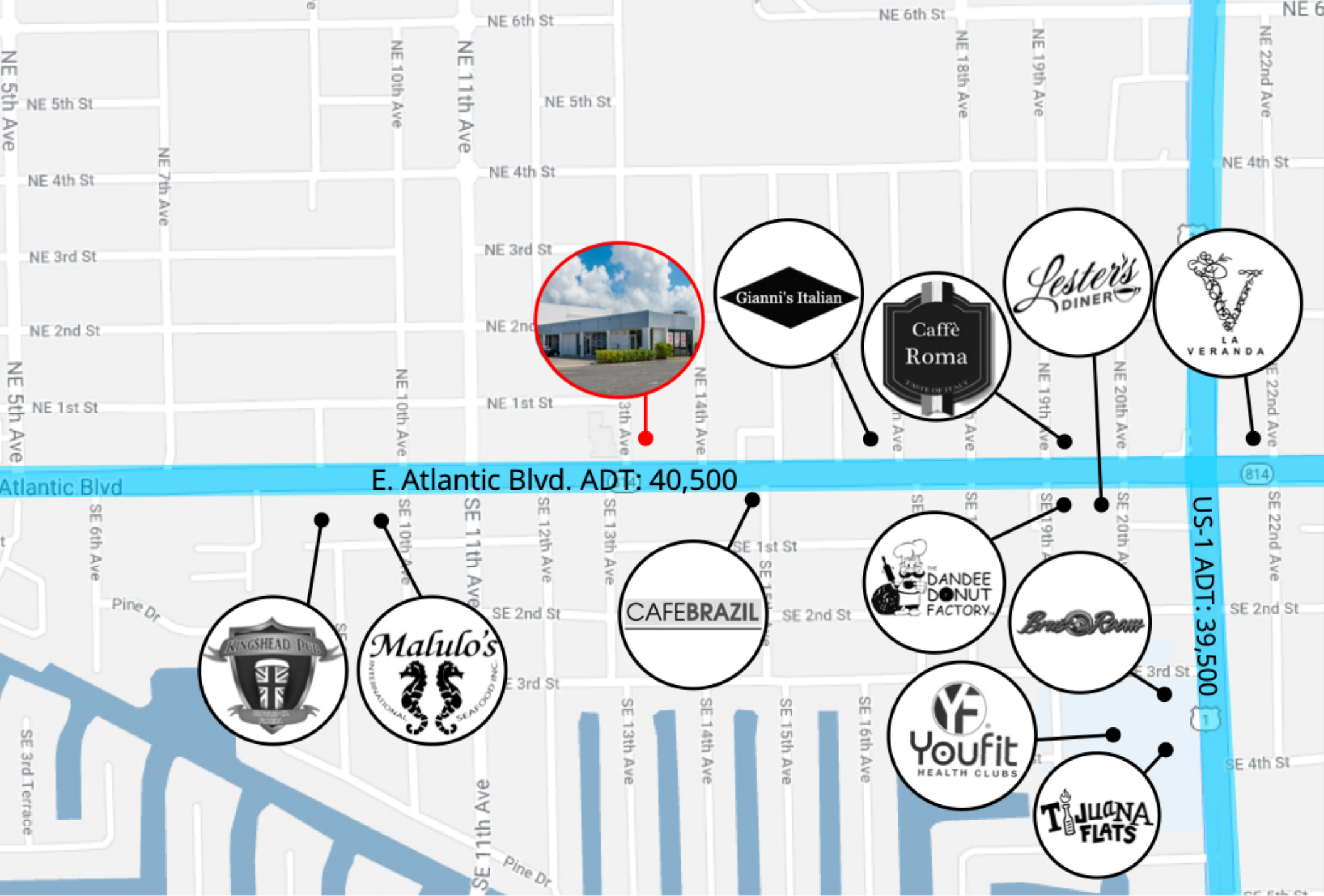
NativeRE.com | 954.595.2999



Floor Plan | 1301 E. Atlantic Blvd. Pompano Beach, FL

NativeRE.com | 954.595.2999





Aerial Map | 1301 E. Atlantic Blvd. Pompano Beach, FL

NativeRE.com | 954.595.2999



An aerial photograph of a coastal city, likely Miami, showing a mix of modern high-rise buildings and older structures. A wide beach runs along the coast, with turquoise water in the foreground. The word 'NATIVE' is written in large, white, outlined letters across the top, and 'REALTY' is written in smaller, white, outlined letters below it.

NATIVE

REALTY

Jaime Sturgis
Dan Ross
NativeRE.com
954.595.2999
Info@NativeRE.com