

MURRIETA PROFESSIONAL PLAZA MEDICAL OFFICE SUITE FOR LEASE

40700 CALIFORNIA OAKS ROAD - MURRIETA, CA



PROPERTY HIGHLIGHTS:

- » Two-story medical arts building
- » Attractive Mediterranean architecture
- » Approximately 2,191 SF
- » Elevator served
- » Medical uses approved
- » Immediate Occupancy

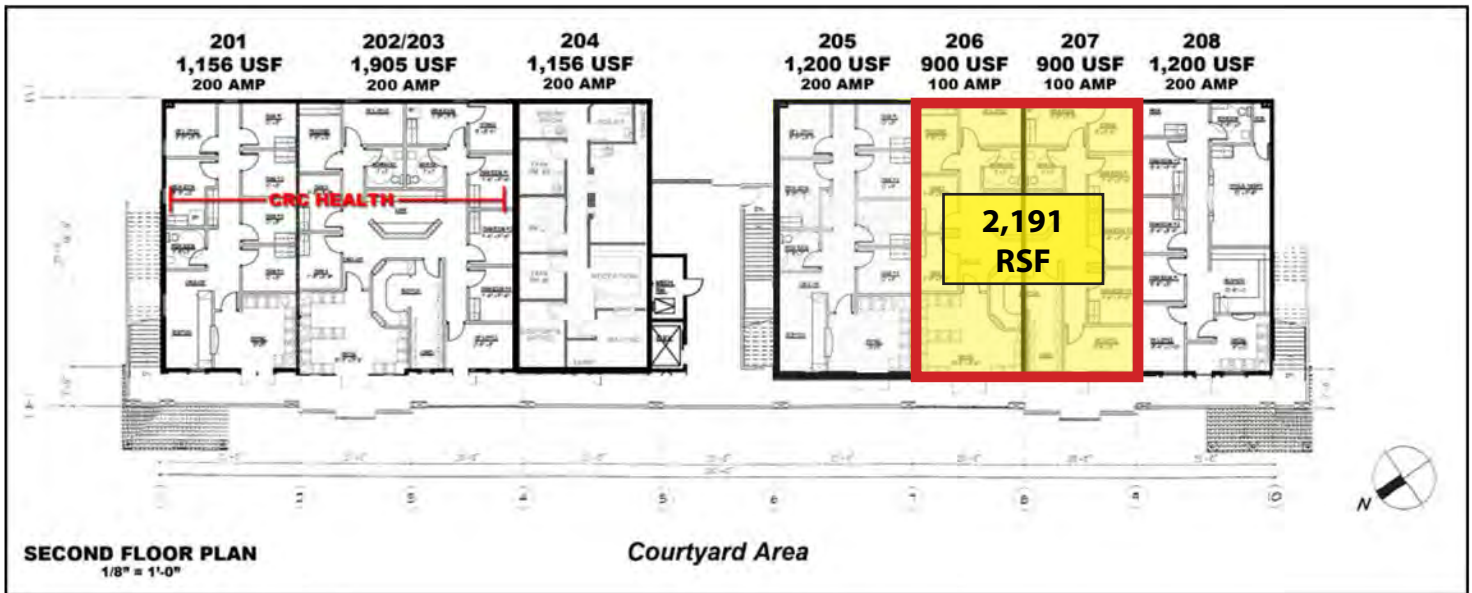
Suite	Size	Rate	Comments
206/207	±2,191 SF	\$2.00	Available Now. On Lockbox



JIM NADAL, CCIM, SIOR • 951.445.4520 • jnadal@leetemecula.com • License #01040679

MURRIETA PROFESSIONAL PLAZA MEDICAL OFFICE SUITE FOR LEASE

40700 CALIFORNIA OAKS ROAD - MURRIETA, CA



JIM NADAL, CCIM, SIOR • 951.445.4520 • jnadal@leetemecula.com • License #01040679

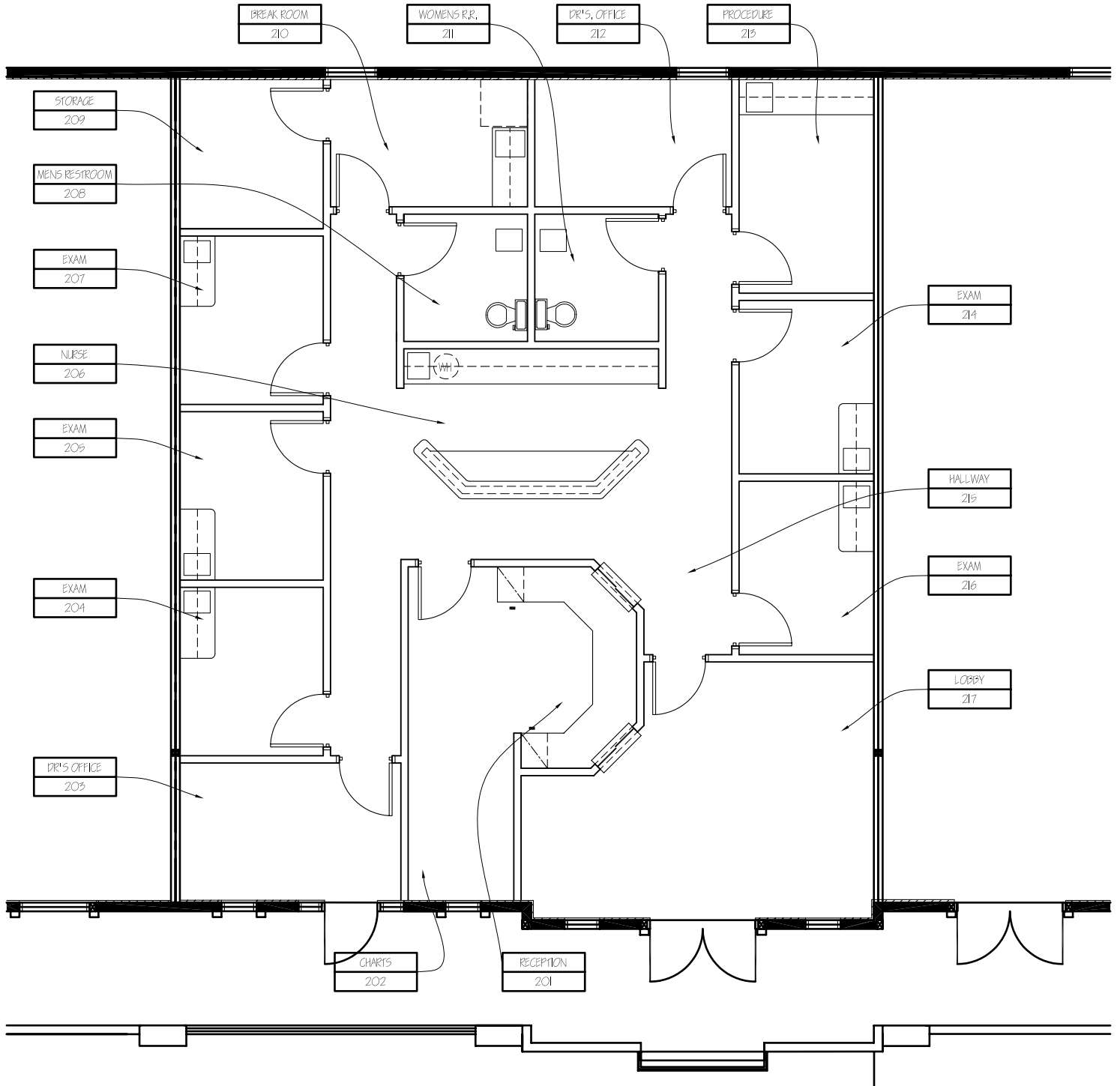
No warranty or representation has been made to the accuracy of the foregoing information. Terms of sale or lease and availability are subject to change or withdrawal without notice.

Lee & Associates Commercial Real Estate Services, Inc. - Riverside. 25240 Hancock Avenue, Suite 100 - Murrieta, CA 92562 | Corporate ID# 01048055

MURRIETA PROFESSIONAL PLAZA MEDICAL OFFICE SUITE FOR LEASE

40700 CALIFORNIA OAKS ROAD - MURRIETA, CA

FLOOR PLAN - SUITES 206/207 2,191 RSF



JIM NADAL, CCIM, SIOR • 951.445.4520 • jnadal@leetemecula.com • License #01040679

No warranty or representation has been made to the accuracy of the foregoing information. Terms of sale or lease and availability are subject to change or withdrawal without notice.

Lee & Associates Commercial Real Estate Services, Inc. - Riverside. 25240 Hancock Avenue, Suite 100 - Murrieta, CA 92562 | Corporate ID# 01048055

MURRIETA PROFESSIONAL PLAZA MEDICAL OFFICE SUITE FOR LEASE

40700 CALIFORNIA OAKS ROAD - MURRIETA, CA



REV 01/03/17

JIM NADAL, CCIM, SIOR • 951.445.4520 • jnadal@leetemecula.com • License #01040679