



SHORT-TERM, MOVE-IN READY OFFICE SPACE

810 12TH AVENUE SOUTH

800 - 15,000 RSF



 CUSHMAN &
WAKEFIELD

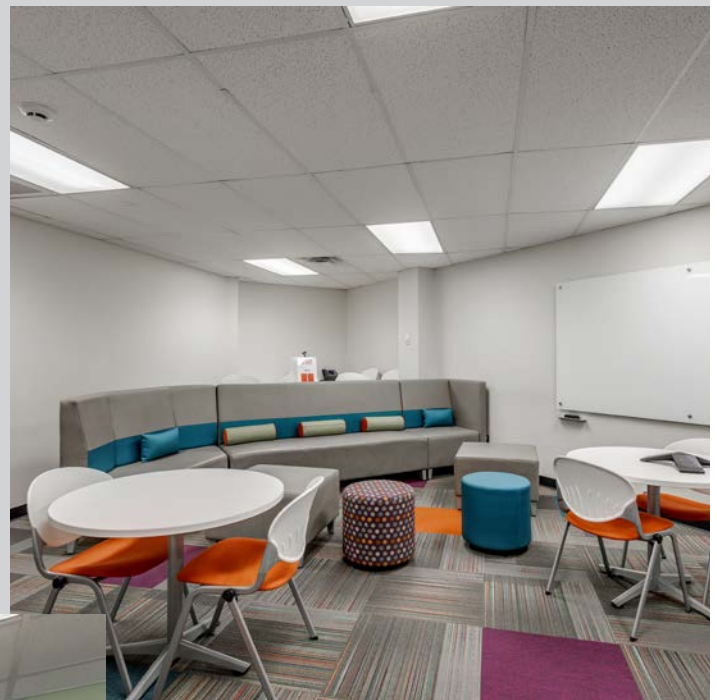
FOR LEASE

810 12TH AVENUE SOUTH

800 - 15,000 RSF

Property Highlights

- 800 - 15,000 sf
- Short-term, move-in ready office space
- Furniture in place
- Several shared conference rooms
- Multiple suites available
- Centrally located and walkable to the Gulch
- 3/1,000 parking ratio



ROB LOWE, CCIM

+1 615 301 2910

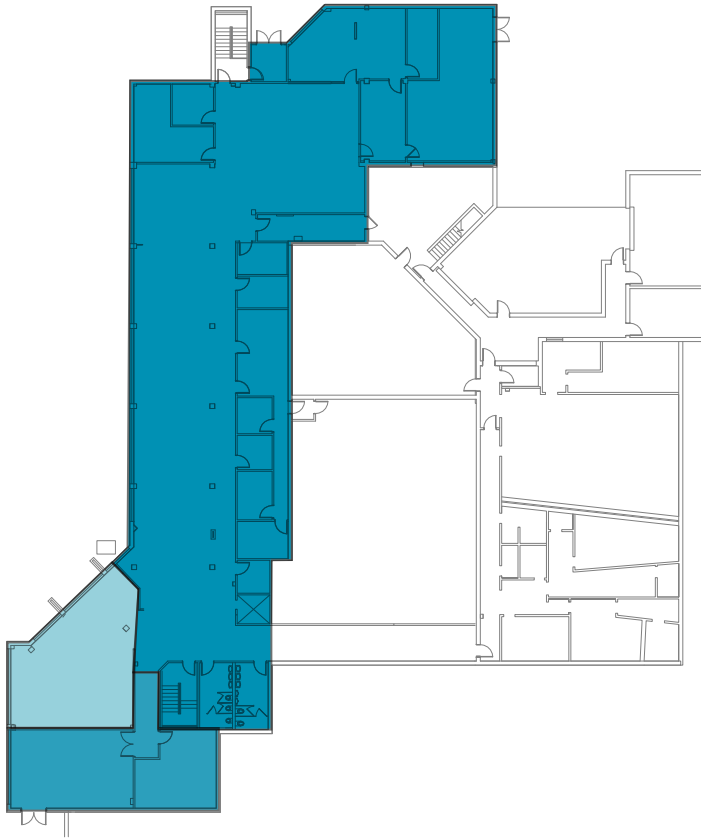
rob.lowe@cushwake.com

ROBBY DAVIS, CCIM

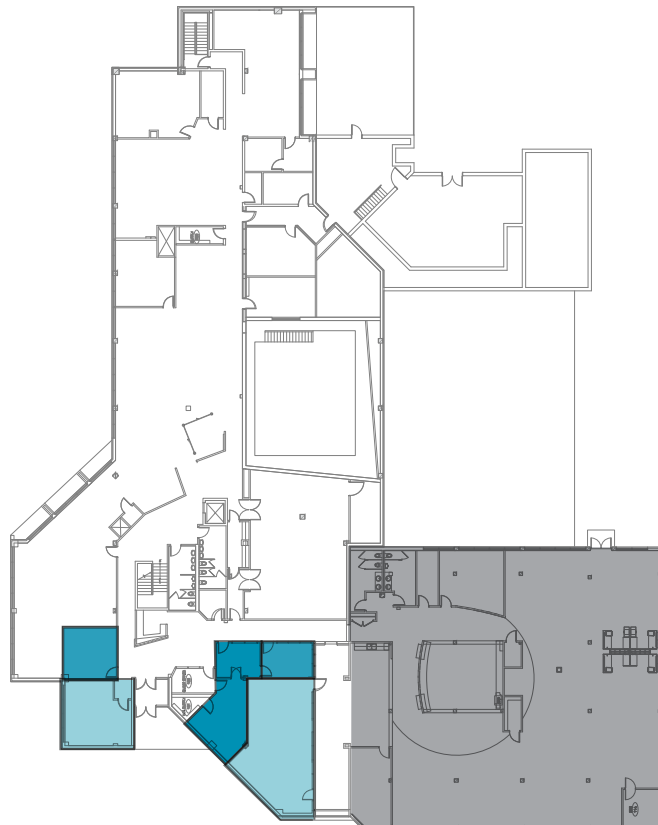
+1 615 301 2920

robby.davis@cushwake.com

LOWER LEVEL



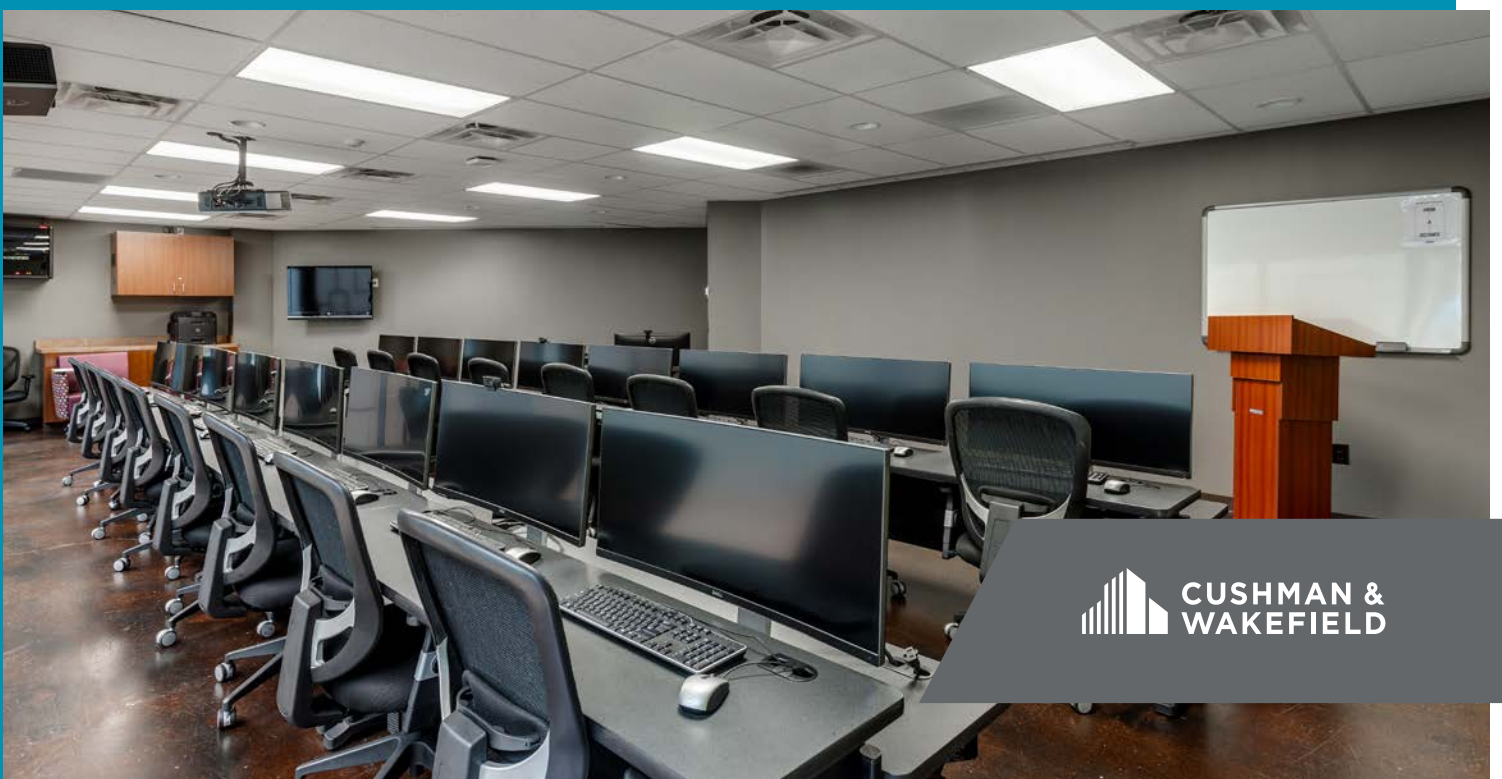
MAIN FLOOR



FOR LEASE

810 12TH AVENUE SOUTH

800 - 15,000 RSF



©2020 Cushman & Wakefield. All rights reserved. The information contained in this communication is strictly confidential. This information has been obtained from sources believed to be reliable but has not been verified. NO WARRANTY OR REPRESENTATION, EXPRESS OR IMPLIED, IS MADE AS TO THE CONDITION OF THE PROPERTY (OR PROPERTIES) REFERENCED HEREIN OR AS TO THE ACCURACY OR COMPLETENESS OF THE INFORMATION CONTAINED HEREIN, AND SAME IS SUBMITTED SUBJECT TO ERRORS, OMISSIONS, CHANGE OF PRICE, RENTAL OR OTHER CONDITIONS, WITHDRAWAL WITHOUT NOTICE, AND TO ANY SPECIAL LISTING CONDITIONS IMPOSED BY THE PROPERTY OWNER(S). ANY PROJECTIONS, OPINIONS OR ESTIMATES ARE SUBJECT TO UNCERTAINTY AND DO NOT SIGNIFY CURRENT OR FUTURE PROPERTY PERFORMANCE.