



3.52 Acres Available

S Mason Montgomery Rd
Mason (Deerfield Township), Ohio 45040

- 3.52 acres for sale
- Across from P&G Mason Campus
- Located just minutes from I-71
- Zero personal earnings tax area
- All business amenities nearby



Contact:

Elaine Gillespie
513.253.3004
egillespie@equity.net

Equity Inc. | O: 513.336.8765 | F: 513.336.8775 | www.equity.net
11353 Reed Hartman Highway, Suite 400 | Cincinnati, OH 45241



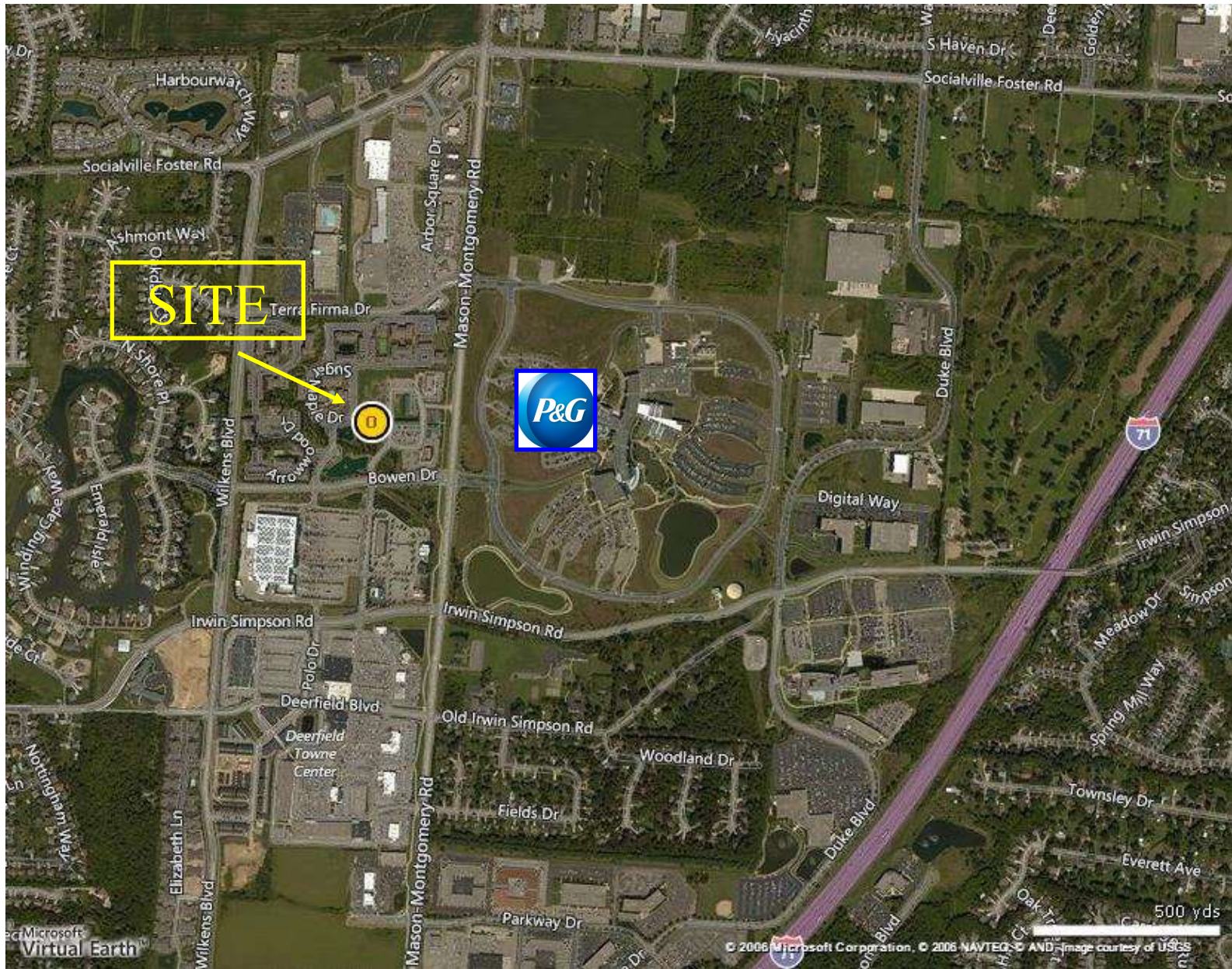
Demographics and Traffic Counts

	1 Mile	3 Miles	5 Miles
Population	5,829	62,892	144,029
Households	2,106	24,687	54,712
Avg. HH Income	\$103,848	\$96,336	\$104,027



development
Commercial Real Estate Solutions®

Available Land Site





P&G to Build \$300M Innovation Center in Mason

Procter & Gamble plans to build a massive new Innovation Center at the Mason Business Park to house the research and development arm of its beauty care business. The consumer product giant plans to spend \$300 million to expand its 1.15 million-square-foot Mason campus by 500,000 square feet to accommodate the 1,150 employees and 200 contractors expected to move from Blue Ash to the new center in Mason.

The move is a major economic coup for the city of Mason, which has seen a string of recent high-profile successes in its goal to establish a biotech and biohealth corridor along Interstate 71.

"This is an historic day for the city of Mason. We see it as a win and a game-changer for the whole region," Mason Mayor David Nichols said Tuesday.

The Mason Business Center is already home to P&G's oral and personal health care products units, which employ around 2,300. The deal is expected to bring \$160 million in new payroll to the city of Mason.

Hansen said the city plans to reinvest the boost to its city coffers into attracting other new business development and improvements to roads and infrastructure. The city boasts a strong track record of attracting companies in recent years.

Assurex Health announced earlier this year it plans to build a new 60,000-square-foot headquarters and state-of-the-art clinical laboratory in Mason. Last year, start-up medical device maker Atricure broke ground on its new 85,000-square-foot global headquarters Western Row and Innovation Way.

Nearby, the Festo Corp., a German-based manufacturer of automation technology, is building its new \$50 million, 175,000-square-foot production and distribution facility on 45 acres in the Mason Business Park off I-71 north of Socialville-Foster Road.

Full Article: <http://www.cincinnati.com/story/news/2015/03/17/pg-moving-beauty-business-mason/24913621/>

City of Mason: <http://www.imagemason.org/business/index.cfm>

Contact:
Elaine Gillespie
513.253.3004
egillespie@equity.net