

1601

MARKET
STREET



MODERN MEETS MARKET @ 1601



1601

MARKET
STREET



MODERN LOOK

- » Exterior: glass-box, retail exposure
- » Sleek and modern lobby renovation
- » Attractive visual art



MODERN LIFESTYLE

- » Staffed gym with towel & laundry service
- » State-of-the-art conference center
- » In-house child care center



MODERN COMMUTE

- » 120 seconds from desk to train
- » Secure, indoor bike storage
- » 100 for walk and transit from Walk Score



MODERN SIGNAGE

- » Outdoor street level monument signage
- » Building signage at third floor level
- » Roof exposure for city-wide branding



MODERN WORKSPACE

- » LEED Silver
- » Silver Wired Score
- » WeWork offers space flexibility



MODERN RETAIL

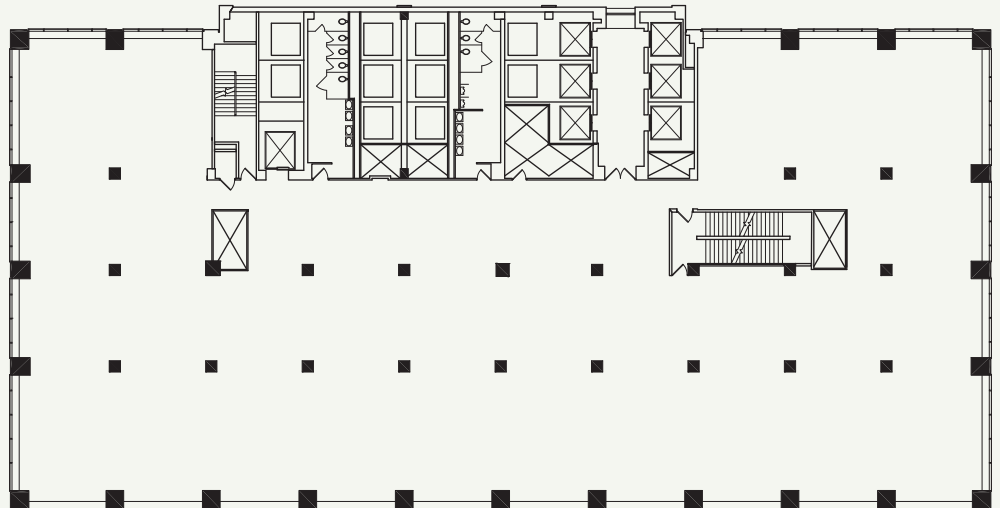
- » Sweetgreen
- » Naya
- » Outdoor seating



EXTENSIVE CAPITAL IMPROVEMENTS COMPLETED

Space available

- » 13th Floor: 19,323 SF
- » 16th Floor: 20,167 SF
- » 17th Floor: 10,499 SF



*multiple suites between
2,000 - 5,000 SF also
available

MODERN MEETS MARKET @ 1601



ON-SITE AMENITIES

wework



swæetgreen®

160 RUN
SIXTEEN - O - RUN

TD Ameritrade®

REPUBLIC BANK

Bright Horizons®
Early Education & Preschool

Images to the left: WeWork's reception area, kitchen and common area

FOR LEASING INFORMATION, CONTACT:

Tom Weitzel
Managing Director
+1 215 399 1840
tom.weitzel@am.jll.com

Ashley Parrillo
Senior Associate
+1 215 399 1820
ashley.parrillo@am.jll.com

JLL
1650 Arch Street, Ste. 2500
Philadelphia, PA 19103
jll.com/philadelphia | +1 215 988 5500



Although information has been obtained from sources deemed reliable, Owner, Jones Lang LaSalle, and/or their representatives, brokers or agents make no guarantees as to the accuracy of the information contained herein, and offer the Property without express or implied warranties of any kind. The Property may be withdrawn without notice. ©2019. Jones Lang LaSalle. All rights reserved.