

# Lions Head Office Park

35 Beaverson Blvd.  
Brick, NJ 08723



GROSS LEASABLE AREA

64,480 sf

## Building Specifications

### Building Specs:

**Size:** Thirteen (13) buildings of 4,960 square feet each

**Built:** 1982-1989

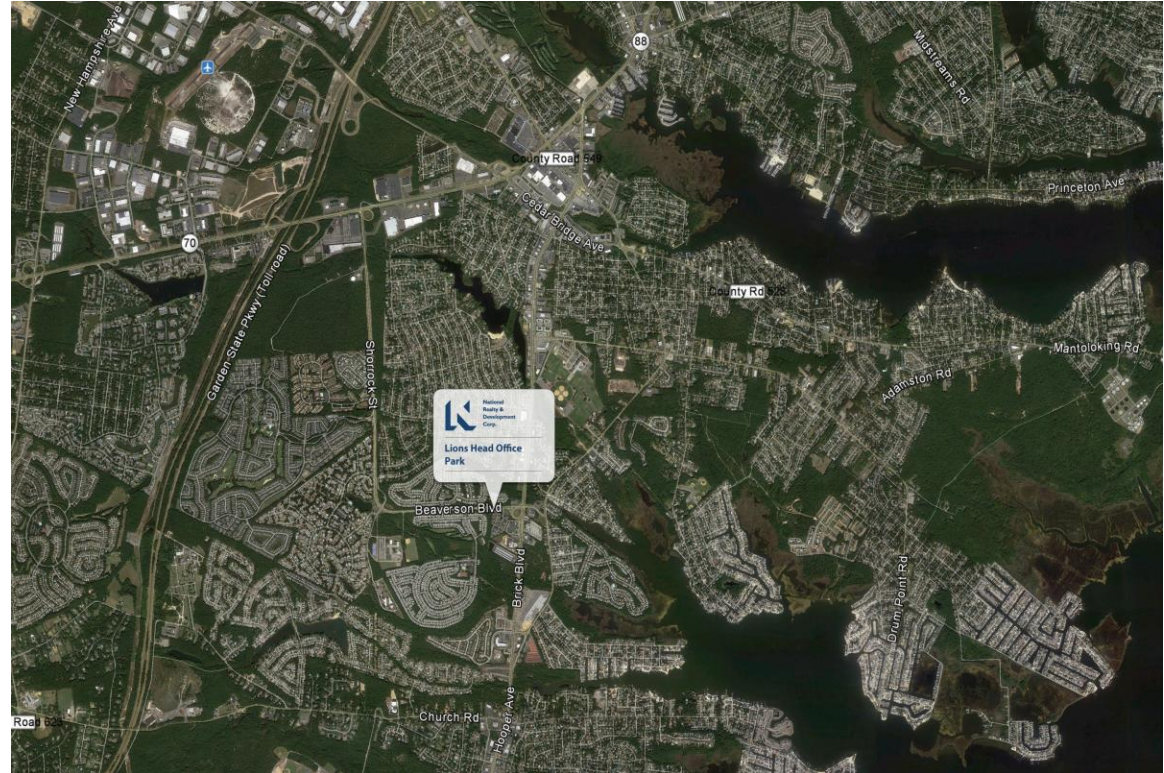
**Ceiling Height:** 9'

**Electrical capacity/voltage:** 400-600 amps per building

**Base cooling/heating:** Multi-zone, individual HVAC units per suite

**Parking:** 4/ 1,000

**Building hours of operation:** 24/7



## Details

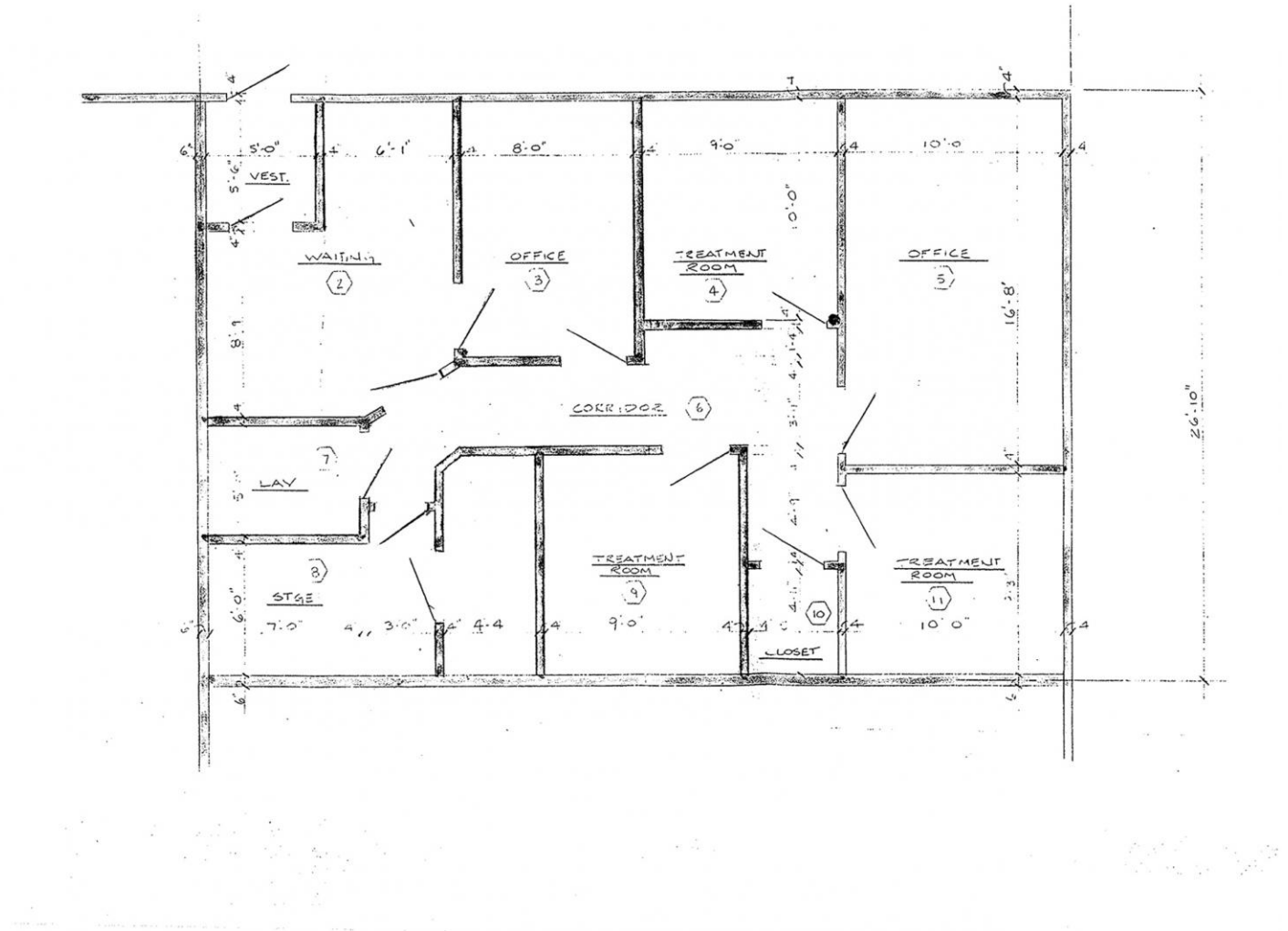
- Lions Head Office Park consists of 13 one-story buildings located at the intersection of Beaverson and Brick Boulevards.
- Situated in beautiful Ocean County, Lions Head Office Park offers convenient access from the Garden State Parkway, Route 70, Route 35 and Route 9.
- Within walking distance to banks, eateries, and minutes from retail shopping and popular restaurants.
- Ample on-site parking is available.

# Lions Head Office Park

35 Beaverson Blvd.  
Brick, NJ 08723

## Space Available

Building 1 : 1,073 sf



# Lions Head Office Park

35 Beaverson Blvd.  
Brick, NJ 08723

## Space Available

---

Building 3: 900 sf

NO FLOOR PLAN AVAILABLE

# Lions Head Office Park

35 Beaverson Blvd.  
Brick, NJ 08723



## Space Available

---

Building 5 : 2,480 sf

NO FLOOR PLAN AVAILABLE

# Lions Head Office Park

35 Beaverson Blvd.  
Brick, NJ 08723



## Space Available

---

Building 5: 1,000 sf

NO FLOOR PLAN AVAILABLE

# Lions Head Office Park

35 Beaverson Blvd.  
Brick, NJ 08723

## Space Available

---

Building 8: 874 sf

NO FLOOR PLAN AVAILABLE

# Lions Head Office Park

35 Beaverson Blvd.  
Brick, NJ 08723

## Space Available

---

Building 12: 1,954 sf

NO FLOOR PLAN AVAILABLE

# Lions Head Office Park

35 Beaverson Blvd.  
Brick, NJ 08723



# Lions Head Office Park

35 Beaverson Blvd.  
Brick, NJ 08723



# Lions Head Office Park

35 Beaverson Blvd.  
Brick, NJ 08723

## Leasing Contacts



**Brian F. Sekel**

914.272.8033

[brian.sekel@nrdc.com](mailto:brian.sekel@nrdc.com)