

FLORETA CONDOMINIUM

OFFICE/RETAIL FOR LEASE

413 NE 70th Street
Seattle, WA 98115



CBA ICSC CoStar
POWERBROKER

Tiffini Connell
Jonathan Willett
(206) 283-5212
www.wccommercialrealty.com

WCCR

West Coast Commercial Realty

DISCLAIMER: The above information has been secured from sources believed to be reliable, however, no representations are made to its accuracy. Prospective tenants or buyers should consult their professional advisors and conduct their own independent investigation. Site plan and configuration are subject to change. Properties are subject to change in price and availability without notice. West Coast Commercial Realty, LLC

FLORERA CONDOMINIUM

OFFICE/RETAIL FOR LEASE

413 NE 70th Street
Seattle, WA 98115

The Location:

- Heart of Greenlake
- Corner of NE 70th Street and Oswego Place NE
- Blocks from Green Lake Park

The Building:

Florera Condominium

- 59 residential condos
- 5 commercial condos
- Co-Tenants (Key Bank, Suana Hut, Liddane Tutoring & Learning Services, LLC)

The Premises:

- 1,847 SF
- 5 Office Spaces
- Private Reception Area
- Private open area for Conference table, etc
- Private Bathroom (1/2 Bath)
- Private Kitchenette
- PARKING (Secure Garage):
5 Spaces Included in the rent
(3 Standard & 2 Tandem)
- Kat 6 wiring for Internet Network/
Phone Lines
(Comcast is area's internet
SRVC Provider)



Tiffini Connell
Jonathan Willett

(206) 283-5212
www.wccommercialrealty.com

WCCR

West Coast Commercial Realty

DISCLAIMER: The above information has been secured from sources believed to be reliable, however, no representations are made to its accuracy. Prospective tenants or buyers should consult their professional advisors and conduct their own independent investigation. Site plan and configuration are subject to change. Properties are subject to change in price and availability without notice. West Coast Commercial Realty, LLC

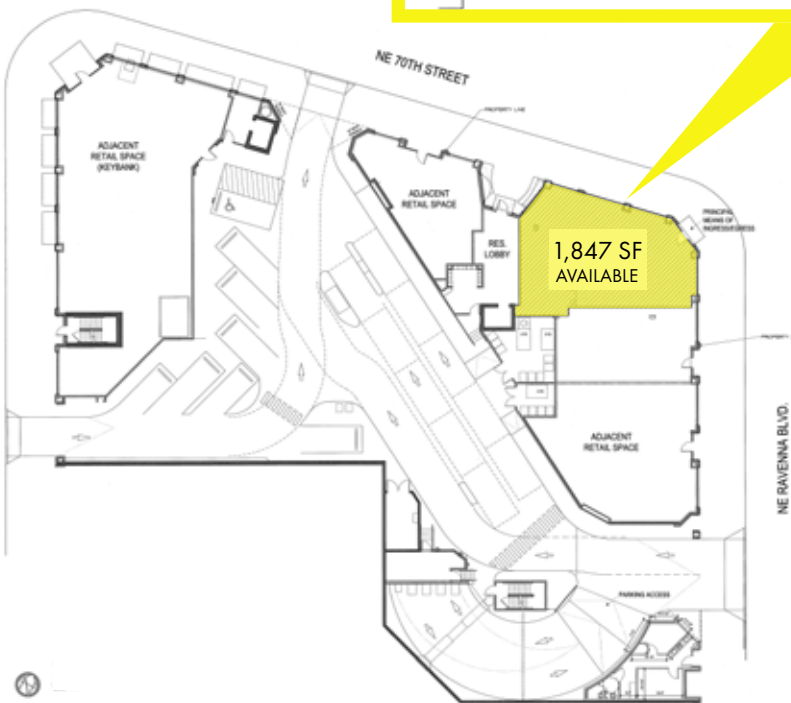
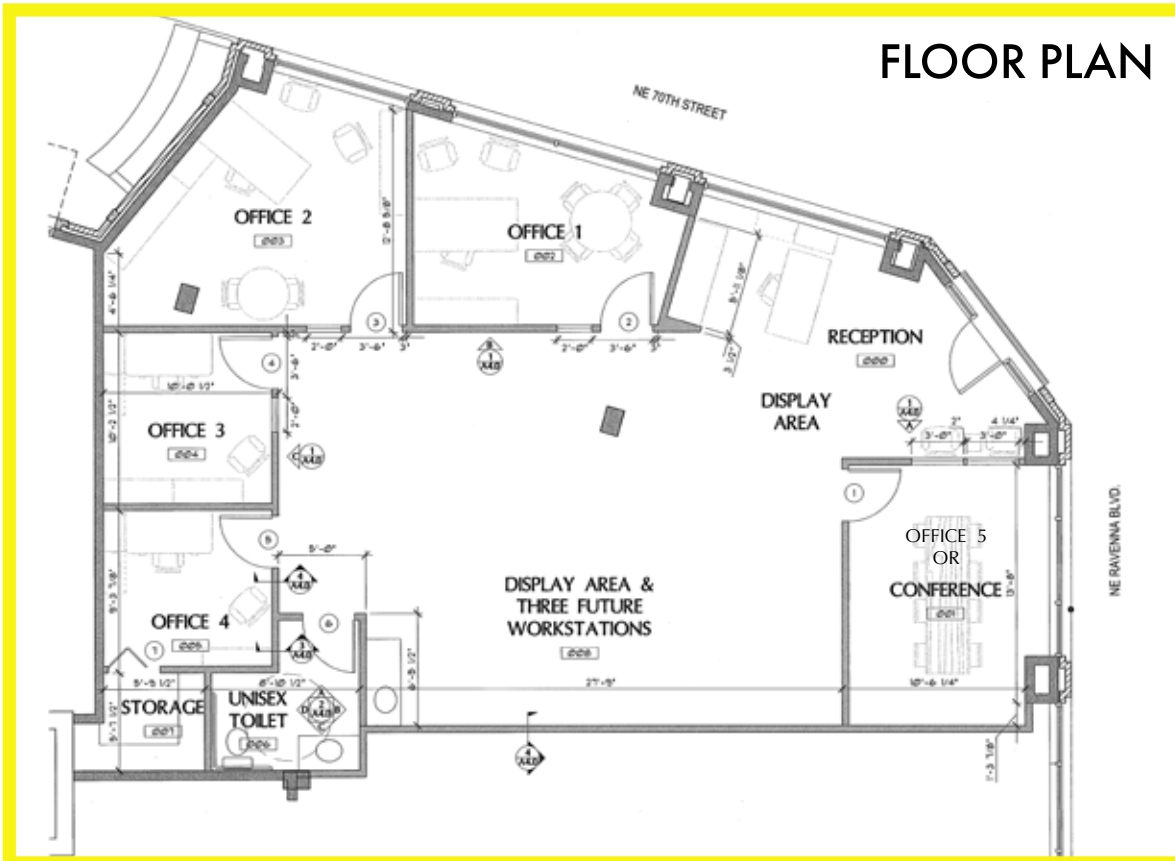
FLOREIRA CONDOMINIUM

OFFICE/RETAIL FOR LEASE

413 NE 70th Street
Seattle, WA 98115

1,847 SF
OFFICE/
RETAIL SPACE
AVAILABLE

FLOOR PLAN



CBA ICSC CoStar POWERBROKER

Tiffini Connell
Jonathan Willett

(206) 283-5212
www.wcccommercialrealty.com

WCCR

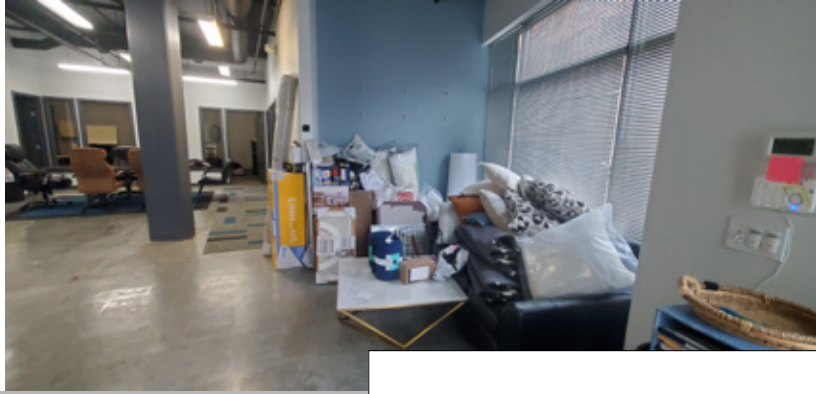
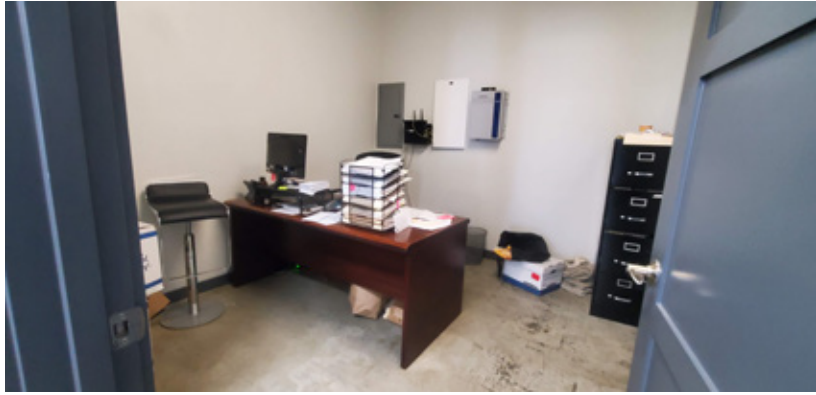
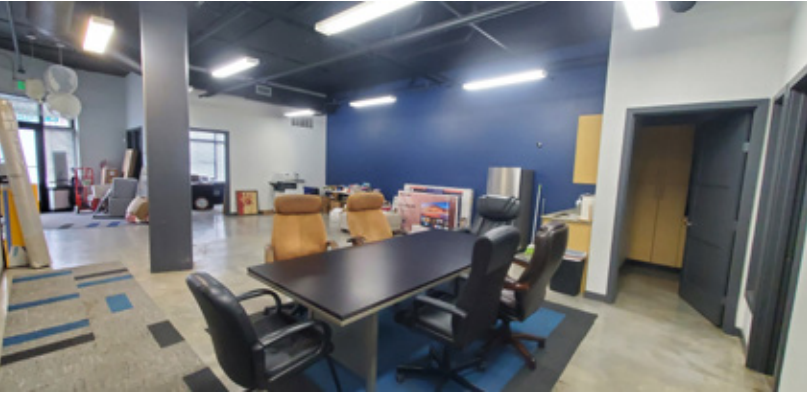
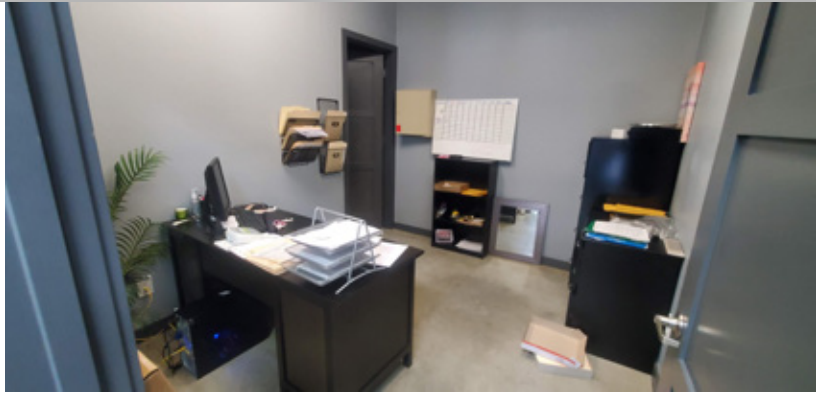
West Coast Commercial Realty

DISCLAIMER: The above information has been secured from sources believed to be reliable, however, no representations are made to its accuracy. Prospective tenants or buyers should consult their professional advisors and conduct their own independent investigation. Site plan and configuration are subject to change. Properties are subject to change in price and/or availability without notice. West Coast Commercial Realty, LLC

FLORETA CONDOMINIUM

OFFICE/RETAIL FOR LEASE

413 NE 70h Street
Seattle, WA 98115



CBA ICSC CoStar POWERBROKER

Tiffini Connell
Jonathan Willett

(206) 283-5212
www.wccommercialrealty.com

WCCR

West Coast Commercial Realty

DISCLAIMER: The above information has been secured from sources believed to be reliable, however, no representations are made to its accuracy. Prospective tenants or buyers should consult their professional advisors and conduct their own independent investigation. Site plan and configuration are subject to change. Properties are subject to change in price and/or availability without notice. West Coast Commercial Realty, LLC

FLOREIRA CONDOMINIUM

OFFICE/RETAIL FOR LEASE

413 NE 70th Street
Seattle, WA 98115



Walker's Paradise
95 POINT WALK SCORE



Traffic Counts - 12,130 Vehicles @
NE Ravenna Blvd & E Green Lake Dr N



Population Growth 2022 - 2027
7.47% within 1 mile



Green Lake Park draws over a
million of visits yearly



Tiffini Connell
Jonathan Willett

(206) 283-5212
www.wcccommercialrealty.com

WCCR

West Coast Commercial Realty

DISCLAIMER: The above information has been secured from sources believed to be reliable, however, no representations are made to its accuracy. Prospective tenants or buyers should consult their professional advisors and conduct their own independent investigation. Site plan and configuration are subject to change. Properties are subject to change in price and availability without notice. West Coast Commercial Realty, LLC